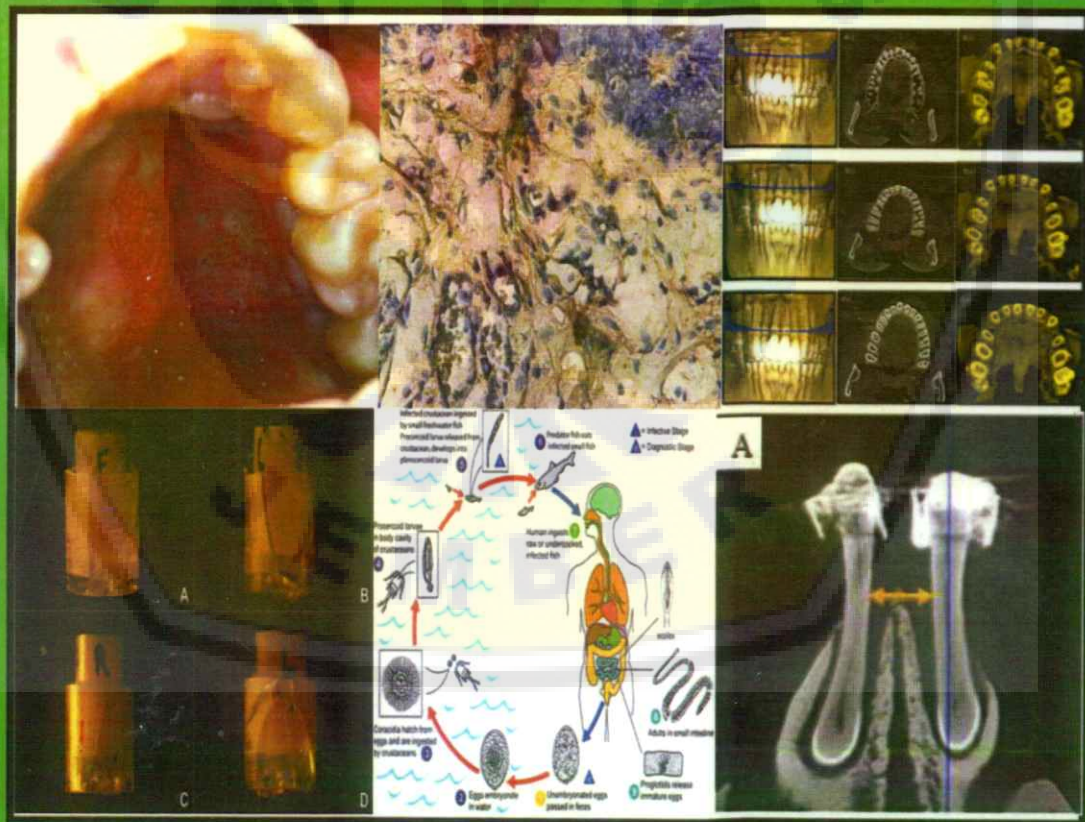


Journal of

International

Dental and Medical

Research



2019 - Vol. 12 – No. 3

<http://www.jidmr.com>

Digital Repository Universitas Jember

Editorial Board of JIDMR

Prof. Dr. Izzet YAVUZ
Editor-in-Chief and General Director

Assoc. Prof. Dr. Ozkan ADIGUZEL
Associate Editor and Director

Advisory Board

Prof. Dr. Refik ULKU Associate Editor for Medicine
Prof. Dr. Zulkuf AKDAG Associate Editor for Biomedical Research

Gajanan Kiran KULKARNI (CANADA) Betül KARGUL (TURKEY) Diah Ayu MAHARANI (INDONESIA) Francisco Cammarata-Scalisi (Venezuela) Myroslav Goncharuk-Khomyn (UKRAINE)	Ferranti WONG (UK) Zeki AKKUS (TURKEY) Michele CALLEA (ROME, ITALY) Zelal ULKU (TURKEY)	Moschos A. PAPADOPOULOS (GREECE) Lindawati S KUSDHANY (INDONESIA) Yasemin YAVUZ (TURKEY) Nik Noriah Nik HUSSEIN (MALAYSIA)
---	--	---

Editorial Board

Abdel Fattah BADAWI (EGYPT)	Guvenc BASARAN (TURKEY)	Nezahat AKPOLAT (TURKEY)
Abdurrahman ONEN (TURKEY)	Guvenc ERBİL (TURKEY)	Nihal HAMAMCI (TURKEY)
Ahmet YALINKAYA (TURKEY)	Halimah AWANG (MALAYSIA)	Nik Noriah Nik HUSSEIN (MALAYSIA)
Ahmet DAG (TURKEY)	Hali AKBAS (TURKEY)	Nurten AKDENİZ (TURKEY)
Ali AL-ZAAG (IRAQ)	Heloisa Fonseca MARAO (BRAZIL)	Nurten ERDAL (TURKEY)
Ali BUMİN (TURKEY)	Hilal TURKER (TURKEY)	Orhan TAÇAR (TURKEY)
Ali GUR (TURKEY)	Huseyin ASLAN (TURKEY)	Ozant ONCAG (TURKEY)
Ali Kemal KADIROGLU (TURKEY)	Igor BELYAEV (SWEDEN)	Ozgur UZUN (TURKEY)
Ali Riza ALPOZ (TURKEY)	Ishan INCI (ZURICH)	Ozkan ADIGUZEL (TURKEY)
Ali Riza Tunçdemir (TURKEY)	İker ETİKAN (TURKEY)	Rafat Ali SIDDIQUI (PAKISTAN)
Allah Bakhsh HAFAZ (USA)	İsmail TEKMEN (TURKEY)	Refik ULKU (TURKEY)
Alpaslan TUZCU (TURKEY)	İsmail ULUKAPI (TURKEY)	Yavuz SANISOGLU (TURKEY)
Alpen ORTUĞ (TURKEY)	Jalen DEVECIOGLU KAMA (TURKEY)	Sabha Zelal ULKU (TURKEY)
Armelia Sari WIDYARMAN (INDONESIA)	Kemal CIGDEM (TURKEY)	Sadullah KAYA (TURKEY)
Ashish AGGARWAL (INDIA)	Kemal NAS (TURKEY)	Saul Martins PAIVA (BRAZIL)
Ayşe GUNAY (TURKEY)	Kewal KRISHAN (INDIA)	Sedat AKDENİZ (TURKEY)
Aziz YASAN (TURKEY)	King Nigel MARTYN (HONG KONG SAR, PR CHINA)	Seher GUNDUZ ARSLAN (TURKEY)
Balasubramanian MADHAN (INDIA)	Kursat ER (TURKEY)	Selahattin ATMAÇA (TURKEY)
Benik HARUTUNYAN (ARMENIA)	Levent ERDINC (TURKEY)	Selahattin TEKES (TURKEY)
Betül KARGUL (TURKEY)	Lucianne Cople MAIA (BRAZIL)	Serdar ERDINE (TURKEY)
Betül URREHMAN (UAZ)	Luciane Rezende COSTA (BRAZIL)	Serdar ONAT (TURKEY)
Bugra OZEN (TURKEY)	Ali FADEL (EGYPT)	Sergio Adriane Bezerra DE MOURA (BRAZIL)
Carlos Menezes AGUIAR (BRAZIL)	Sabri BATUN (TURKEY)	Serhan AKMAN (TURKEY)
Cemil SERT (TURKEY)	Marri Sai ARCHANA (INDIA)	Sertac PEKER (TURKEY)
Chirama SANDHEEP (INDIA)	Manoj KUMAR (INDIA)	Seyed Amir Danesh Sani (USA)
Christine Bettina STAUDT (SWITZERLAND)	Marcelo Rodrigues AZENHA (BRAZIL)	Seyit Burhaneddin ZINCIRCIÖĞLU (TURKEY)
Cihan AKGUL (TURKEY)	Marcia Cancado FIGUEIREDO (BRAZIL)	Shailesh LELE (INDIA)
Claudia DELLAVIA (ITALY)	Marco MONTANARI (ITALY)	Sinerik N. AYRAPETYAN (ARMENIA)
Diah Ayu MAHARANI (INDONESIA)	Margaret TZAPHLIDOU (GREECE)	Smaragda KAVADIA (GREECE)
Dinesh Rokaya (NEPAL)	Maria Elisa Oliveira dos SANTOS (BRAZIL)	Soesani SIDROPOULOU (GREECE)
Emmanuel Joao Nogueira Leal da SILVA (BRAZIL)	Medi GANBEGOVIC (BOSNIA and HERZEGOVINA)	Sunit Kr. JUREL (INDIA)
Emin Caner TUMEN (TURKEY)	Mehmet DOGRU (TURKEY)	Stephen D. SMITH (USA)
Emrullah BAHSI (TURKEY)	Mehmet Emin ERDAL (TURKEY)	Susumu TEREKAWA (JAPAN)
Ertunc Dayı (TURKEY)	Mehmet Sinan DOĞAN (TURKEY)	Suha TURKASLAN (TURKEY)
Fadel M. ALI (EGYPT)	Mehmet Ünal (TURKEY)	Suleyman DASDAG (TURKEY)
Fahinur ERTUGRUL (TURKEY)	Mehmet Zulkuf AKDAG (TURKEY)	Taskin GURBUZ (TURKEY)
Feral ÖZTURK (TURKEY)	Meral ERDİNC (TURKEY)	Ufuk ALUCLU (TURKEY)
	Michele CALLEA (ITALY)	Ugur KEKLIKCI (TURKEY)

TABLE OF CONTENTS / 2019; 12 (3)

DENTISTRY

- | | |
|--|-----------------------------|
| <p>1. The Profile of Progesterone Hormone, Vitamin D, and Bone Density in Postmenopausal Women
Pitu Wulandari, Susi R Puspitadewi, Sri Lelyati C Masulili, Elza I Auerkari, Hanna Bachtiar Iskandar,
Ali Baziad, Lindawati S Kusdhany
<i>Pages 842-847</i></p> | <p>EXPERIMENTAL ARTICLE</p> |
| <p>2. Chemical Composition and in vitro Antimicrobial Properties of Phyllanthus columnaris Stem Bark Tannins Against Oral Pathogens
T. A. M. Othman, Rohazila Mohd Hanafiah, Noor Akmar Nam, Shahida Mohd-Said,
Siti Noor Adnalizawati Adnan
<i>Pages 848-853</i></p> | <p>EXPERIMENTAL ARTICLE</p> |
| <p>3. Wound Healing Activity of Binahong (<i>Anredera cordifolia</i> (Ten.) Steenis) Leaves Extract towards NIH-3T3 Fibroblast Cells
Olivia Avriyanti Hanafiah, Trimurni Abidin, Syafrudin Ilyas, Marline Nainggolan, Endang Syamsudin
<i>Pages 854-858</i></p> | <p>EXPERIMENTAL ARTICLE</p> |
| <p>4. Level of Salivary Microorganisms After Consumption of Malaysian Tualang Honey: A Preliminary Study
Norzalina Ghazali, Rohazila Mohamad Hanafiah, Norazlina Mohammad, Alida Mahyuddin, Zalina Baharudin
<i>Pages 859-862</i></p> | <p>EXPERIMENTAL ARTICLE</p> |
| <p>5. Antibacterial Efficacy of Secang Heartwood (<i>Caesalpinia sappan</i> L.) Extract Solutions Against <i>Enterococcus faecalis</i> Biofilm Obtained from Clinical Isolates
Putri Yulandari, Ratna Meidyawati, Anggraini Margono, Dewa Ayu Npa, Meita Herisa
<i>Pages 863-869</i></p> | <p>EXPERIMENTAL ARTICLE</p> |
| <p>6. Fracture Analysis of Post Material and Bonding Condition on A Cylindrical Glass-Resin Bilayer Structure
Pimduen Rungsiyakull, Kanittha Kasetwong, Apichai Yavirach, Tanapon Sornsuan
<i>Pages 870-879</i></p> | <p>EXPERIMENTAL ARTICLE</p> |
| <p>7. Comparison of Root Canal Wall Cleanliness In Retreatment Using Rotary and Reciprocal Movement
Ayu Wulandari, Munyati Usman, RAH Nilakesuma Djauharie, Andari Putrianti
<i>Pages 880-885</i></p> | <p>EXPERIMENTAL ARTICLE</p> |
| <p>8. Effect of 940nm Low Level Laser Therapy on Bone Remodelling During Orthodontic Tooth Movement in Rats
Mohammed Mahmood Jawad, Adam Husein, Mohammad Khursheed Alam, Rozita Hassan, Rumaizi Shaari, Ahmad Azlina, MS. Salzihan
<i>Pages 886-893</i></p> | <p>EXPERIMENTAL ARTICLE</p> |
| <p>9. Garlic Extract Effectivity Against the Viability of Biofilms Produced by <i>Streptococcus mutans</i> Serotypes C and F in Pediatric Patients with Early Childhood Caries
Puspa Dwi Pratiwi, Sarworini Bagio Budiardjo, Eva Fauziah, Mochamad Fahlevi Rizal, Margaretha Suharsini, Heriandi Sutadi, Ike Siti Indarti
<i>Pages 894-899</i></p> | <p>EXPERIMENTAL ARTICLE</p> |

TABLE OF CONTENTS / 2019; 12 (3)

- EXPERIMENTAL ARTICLE**
- 10. Assessment of Various Subtypes of Salmonella serotypes and Salmonella enteritidis as Important Human Pathogens According to Standard Microbiological Methods**
 Nora Shabani, Rrahman Ferizi, Arben Murtezani, Ragip Shabani, Naim Haliti, Fehim Haliti
Pages 900-906
- EXPERIMENTAL ARTICLE**
- 11. Antibacterial Effects of Silver and Titanium Dioxide Nanoparticle Solutions on Streptococcus mutans on Thermoplastic Retainers**
 Nadya Amanda Paramita, Maria Purbiati, Nia Ayu Ismaniati
Pages 907-911
- EXPERIMENTAL ARTICLE**
- 12. The Study of Antimicrobial Activity on Aggregatibacter actinomycetemcomitans of AgNPs Capping with Roselle**
 Sirorat wacharanad, Nattaporn sukprasert, Wichaya choonium, Thitirat Taya, Nuttaya Phrai-in
Pages 912-916
- EXPERIMENTAL ARTICLE**
- 13. Antibacterial and Antifungal Effectiveness of Virgin Coconut Oil (VCO) Mousse against Streptococcus mutans and Candida albicans Biofilms**
 Lili Nur Indah Sari, Eva Fauziah, Sarworini Bagio Budiardjo, Margaretha Suharsini, Heriandi Sutadi, Ike Siti Indarti, Mochamad Fahlevi Rizal
Pages 917-922
- EXPERIMENTAL ARTICLE**
- 14. Particle Size Modification of Curcumin and Its Effect on Plasma and Tissue Distribution**
 Melva Louisa, Wenny T Ramadanty, Wawaimuli Arozal, Regina PU Satyana, Gaviota Hartono, Serlie Fatrin
Pages 923-928
- EXPERIMENTAL ARTICLE**
- 15. Experimental Model of Thermally Induced-Tongue Ulcer in Mice**
 Erik Idrus, Inneke Ansasti Mutiara Pramatama, Dewi Fatma Suniarti, Yuniardini Septorini Wimardhani, Mindya Yuniastuti
Pages 929-934
- EXPERIMENTAL ARTICLE**
- 16. The Effect of Higher Temperature on the Aggressiveness of the Mice Adenocarcinoma Mammar Cells**
 Kusmardi Kusmardi, Inne Caroline, Puspita Eka Wuyung, Ria Kodariah, Salinah
Pages 935-940
- EXPERIMENTAL ARTICLE**
- 17. Expression of NF- κ B and MMP-7 on Defenses of the Gingival Epithelium Injected LPS Porphyromonas Gingivalis with the Administration of Curcumin**
 Eka Fitria Augustina, I Ketut Sudiana, Soetjipto, Muhammad Rubianto
Pages 941-946
- EXPERIMENTAL ARTICLE**
- 18. The Effect of Saltwater Fish Consumption by Female House Mice (Mus Musculus) on the Increasing Teeth Enamel Density of Their Pups: MicroCT Analysis**
 Sandy Christiono, Seno Pradopo, I Ketut Sudiana
Pages 947-952
- EXPERIMENTAL ARTICLE**
- 19. Thymoquinone Potency in Denture Plaque Hydrolysis In Vitro**
 Muhammad Luthfi, Indah Listiana Kriswandini, Afrisal Erviyansyah
Pages 953-958

TABLE OF CONTENTS / 2019; 12 (3)

- | | |
|---|------------------------------------|
| <p>20. Optimum Concentration Anredera cordifolia (Ten.) Steenis Gel in Increasing the Expression BMP-2 and the number of Osteoblasts Post Tooth Extraction in Wistar Rats
Christian Khoswanto
<i>Pages 959-963</i></p> | <p>EXPERIMENTAL ARTICLE</p> |
| <p>21. The GADD45 and Wild p53 Expressions Resulting from Moderate Swimming Exercise on Mus musculus Injected by Benzopyrene
Anis Irmawati, Harjanto Joso Muljono, I Ketut Sudiana
<i>Pages 964-968</i></p> | <p>EXPERIMENTAL ARTICLE</p> |
| <p>22. Celluler Analysis In Orthodontic Tooth Movement Post Robusta Coffee Extract Administration
Herniyati, Happy Harmono, Leliana Sandra Devi, Sri Hernawati
<i>Pages 969-976</i></p> | <p>EXPERIMENTAL ARTICLE</p> |
| <p>23. Salt Taste Threshold and Blood Pressure of Labourers Who Smoked Filtered Kreteks
Sri Tjahajawati, Winny Yohana, Sofyan Suri, Anggun Rafisa
<i>Pages 977-979</i></p> | <p>EXPERIMENTAL ARTICLE</p> |
| <p>24. Effect of Hypercholesterolemia in Platelet Rich Plasma (PRP)
Irene Edith Rieuwpassa, Rahmawati Minhajat, Asdar, Supiaty, Febri Emelia Naomi Tetelepta, Harun Achmad
<i>Pages 980-984</i></p> | <p>EXPERIMENTAL ARTICLE</p> |
| <p>25. Mouthwash Product Development Based on Ethanol Extract of White Rice Bran (Oryza sativa L.) as Antibacterial of Streptococcus mutans and Porphyromonas gingivalis
Marhamah, Harun Achmad, Mardiana, Hendrastuti Handayani, Fajriani, Asmawati Amin, Sri Oktawati
<i>Pages 985-990</i></p> | <p>EXPERIMENTAL ARTICLE</p> |
| <p>26. Inhibition Power Test of White Rice Bran Extract (Oryza Sativa L.) With the Solution of Ethanol and Aquades on Streptococcus Mutans (In Vitro) Bacteria
Marhamah, Harun Achmad, Anggi Lintang Cahyani, Hendrastuti Handayani
<i>Pages 991-996</i></p> | <p>EXPERIMENTAL ARTICLE</p> |
| <p>27. Endothelium Dysfunction as the Predictor of Oral Lichen Planus
Irina V. Firsova, Julia A. Makedonova, Alexandra N. Popova, Sergey V. Krajnov, Yuliya M. Fedotova
<i>Pages 997-1003</i></p> | <p>CLINICAL ARTICLE</p> |
| <p>28. Virtual Reality Distraction on Dental Anxiety and Behavior in Children with Autism Spectrum Disorder
Lekshmi R. Suresh, Christy George
<i>Pages 1004-1010</i></p> | <p>CLINICAL ARTICLE</p> |
| <p>29. Efficacy of Antibiotic Prophylaxis in The Prevention of Bacterial Endocarditis in Dental Practice
Aida Rexhepi, Vjosa Hamiti, Zana Agani, Teuta Kutllovci, Blerta Xhemajli, Mergime Loxha
<i>Pages 1011-1016</i></p> | <p>CLINICAL ARTICLE</p> |
| <p>30. Association Between Early Childhood Caries and Oral Health-Related Quality of Life Using Echis Instrument
Rezky Fauziah Permatasari, Febriana Setiawati, Iwany Amalliah Badruddin
<i>Pages 1017-1021</i></p> | <p>CLINICAL ARTICLE</p> |

TABLE OF CONTENTS / 2019; 12 (3)

- | | |
|--|-------------------------|
| <p>31. Tumour Recurrence and Facial Nerve Injury Rates After Surgery of Pleomorphic Adenoma Through 5-Year Follow-Up: A Retrospective Single-Centre Study
Sinan Rusinovci, Mergime Prekazi Loxha, David Stubljari
<i>Pages 1022-1028</i></p> | <p>CLINICAL ARTICLE</p> |
| <p>32. Association between Temporomandibular Disorders and Asymmetrical Articular Eminence
Ira Tanti, Muslita Indrasari, Nandya Wintasari
<i>Pages 1029-1034</i></p> | <p>CLINICAL ARTICLE</p> |
| <p>33. Salivary Gland Tumours Through 5-Year Follow-Up: A Retrospective Single-Centre Study
Mergime Prekazi-Loxha, Sinan Rusinovci, Tomislav Jukic, David Stubljari
<i>Pages 1035-1041</i></p> | <p>CLINICAL ARTICLE</p> |
| <p>34. Orthodontic Treatment Need Assessed by Malocclusion Severity using the Dental Health Component of IOTN
Maria Julita Nugroho, Nada Ismah, Maria Purbiati
<i>Pages 1042-1046</i></p> | <p>CLINICAL ARTICLE</p> |
| <p>35. Oral Health Related Quality of Life and Dental Anxiety in Children with Malocclusion between 11-14 years Old
Albena Reshitaj, Resmije Bujupi, Krenar Reshitaj, Betina Bytyqi
<i>Pages 1047-1049</i></p> | <p>CLINICAL ARTICLE</p> |
| <p>36. Relationship Between Oral Health Literacy and Denture Use for Tooth Loss Among Adults in Indonesia
Reny Mawardini, Ratna Sari Dewi, Roselani W. Odang
<i>Pages 1050-1054</i></p> | <p>CLINICAL ARTICLE</p> |
| <p>37. Bone Density, Arch Dimensions and Irregularity Index of Human Maxillary Arch: A Pilot Study
Fazal Shahid, Norma Ab Rahman, Mohd Fadhli Khamis, Adam Husein, Mohammad Khursheed Alam
<i>Pages 1055-1062</i></p> | <p>CLINICAL ARTICLE</p> |
| <p>38. Salivary Bone-specific Alkaline Phosphatase as Predictor of Puberty Phase
Harryanto Wijaya, Lindawati S. Kusdhany, Sri Redjeki, Benny M. Soegiharto
<i>Pages 1063-1067</i></p> | <p>CLINICAL ARTICLE</p> |
| <p>39. Effect of Scaling and Root Planing Based on MMP-8 mRNA Expression and Clinical Parameters in Periodontitis Patients
Olivia Nauli Komala, Robert Lessang, Hari Sunarto, Boy Muchlis Bachtari, Yuniarti Soeroso
<i>Pages 1068-1073</i></p> | <p>CLINICAL ARTICLE</p> |
| <p>40. Copy Denture: The General Overview Among Dentists and Dental Technologists In Malaysia
Norlela Jacob, Faizah Abdul Fatah, Wan Nor Syariza Wan Ali, Nusima Mohamed, Tine Martine Winarti, Aida Ali, Safura Anita Baharin
<i>Pages 1074-1078</i></p> | <p>CLINICAL ARTICLE</p> |

Journal of International Dental and Medical Research Guidelines for Authors

Manuscript and Peer Review Submission process is by the e-mail to the
izzetyavuz@hotmail.com , iyavuz@dicle.edu.tr .

Prof. Dr. Izzet YAVUZ

D.Ü. Faculty of Dentistry
Editor-in-Chief and General Director
Journal of International Dental and Medical Research ISSN 1309 – 100X

<http://www.jidmr.com/journal/>

MSc, PhD, D Ped Dent.
Professor, Pediatric Dentistry

Faculty of Dentistry, University of Dicle
21280 Diyarbakir, TURKEY
E-mail: izzetyavuz@hotmail.com, iyavuz@dicle.edu.tr
ECTODERMAL DYSPLASIA GROUP – TURKEY
<http://www.ektodermaidislazi.com>

Introduction

Journal of International Dental and Medical Research, a journal of the Ectodermal Dysplasia Group-Turkey, is published three times annually [or 4 times per year] to promote practice, education, and research specifically related to the specialty of dental and medical research. Manuscripts are accepted for consideration if neither the article, nor any part of its essential substance, tables, or figures has been or will be published in another journal or is simultaneously submitted to another journal. Published papers do not necessarily represent the views of the editor, the Ectodermal Dysplasia Group-Turkey.

Types of articles

The journal publishes full-length scientific articles not exceeding 8 printed pages (20 double-spaced 8 1/2×11-in document pages; font no smaller than 12-point Times New Roman or Arial); and clinical articles and case reports not exceeding 4 printed pages (10 double-spaced 8 1/2×11-in document pages).

Authors are encouraged to review these Instructions carefully prior to submitting their manuscripts.

Submission of manuscripts

Submission of manuscripts to the *Journal of International Dental and Medical Research* is via e-mail, also hard copy with electronic record submissions will be accepted. Submitting

authors must provide all information requested during the submission process, including: corresponding author's contact information; names, titles (such as "associate professor," "chairman,"), academic degrees (such as "DMD," "MS," "PhD,"), and affiliations of all authors; short (running) title; and 2 to 5 keywords. Honorary designations should not be included (eg, "FRCS," "FICD", "Diplomate, ABPD," etc). Authors should ensure that the keywords appear in the U.S. National Library of Medicine Medical Subject Headings, or "MeSH" (found at <http://www.nlm.nih.gov/mesh/>).

Both an UNBLINDED and BLINDED version of the manuscript must be sent to the journal. Tables and graphs should appear at the end of the main document, while photos and photomicrographs should be submitted as separate files (.jpg or .tiff format). Prior to submission, the corresponding author must guarantee that the article has not been published, and is not being considered for publication elsewhere. Submission of multi-authored manuscripts implies participation of each of the authors in the preparation of the paper. Only individuals who have made a significant contribution to the study or manuscript should be listed as authors. The efforts of others should be noted in the *Acknowledgments* section at the end of the manuscript. The corresponding author should submit the following statement: "All authors have made substantive contribution to this study and/or manuscript, and all have reviewed the final paper prior to its submission." Authors (including authors of letters to the editor) are responsible for disclosing all financial and personal relationships that might bias their work. If such conflicts exist, the authors must provide additional detail in the letter to the editor. Funding sources for the work being submitted must be disclosed in the *Acknowledgments* section of the manuscript.

Manuscript organization

Scientific articles should be organized under the following headings: *Abstract, Introduction, Methods, Results, Discussion, Conclusions, Acknowledgments, and References.*

Titles of all papers should not exceed 15 words.

The *Introduction* section should include only pertinent references. When included for a study, the *Methods* section should be sufficiently detailed to replicate the study. The *Results* section should include only results and not discussion of the data. The *Discussion* section should discuss the results, but not repeat them. The *Conclusions* section should consist of succinct, numbered statements that are supported by the results of the study. They should not repeat the *Results* section.

Abstracts: All submissions must include an abstract. Abstracts should be brief providing the reader with a concise but complete summary of the paper. Generalizations such as "methods were described" should not be used. Scientific articles should have approximately 200 words

Key Words: Submitting authors must provide 2 to 5 keywords from <http://www.bilinterimlari.com> .

Editorial style: Papers will be published in English, using American spelling. Manuscripts must be submitted with proper English grammar, syntax, and spelling. Authors should express their own findings in the past tense and use the present tense where reference is made to existing knowledge, or where the author is stating what is known or concluded. Footnotes

should be avoided and their content incorporated into the text. Numbers should be represented as digits; only numbers beginning a sentence should be spelled out. The editors reserve the right to revise the wording of papers in the interest of the journal's standards of clarity and conciseness.

Units of measure: Authors should express all quantitative values in the International System of Units (SI units)

unless reporting English units from a cited reference. Figures and tables should use SI units, with any necessary conversion factors given in legends or footnotes. All numbers should be expressed as digits, and percent values should be expressed as whole numbers. Laboratory data values should be rounded to the number of digits that reflects the precision of the results and the sensitivity of the Measurement procedure.

Statistical tests: The results of all statistical comparisons should be reported to include the statistical test value and the associated P value and confidence interval, if appropriate. If $P > .01$, the actual value for P should be expressed to 2 digits, whether or not P is significant, unless rounding a significant P value expressed to 3 digits would make it nonsignificant (eg, $P = .049$, not $P = .05$). If $P < .01$, it should be expressed to 3 digits (eg, $P = .003$, not $P < .05$). Actual P values should be expressed unless $P < .001$, in which case they should be so designated. Nonsignificant values should not be expressed as "NS." For confidence intervals, the number of digits should equal the number of digits in the point estimate. For example, for an odds ratio of 3.56, the 95% confidence interval should be reported as "1.23, 5.67," not as "1.234, 5.678."

Tooth names: The complete names of individual teeth should be given in full in the text of articles using the following convention: [primary/permanent] [maxillary/mandibular] [right/left] [central/lateral or first/second/third] [tooth type]. Examples: "primary maxillary right first molar," "permanent mandibular first molars," but "mandibular right second premolar." In tables these names may be abbreviated by the Universal system (A-T for primary teeth, 1-32 for permanent teeth).

Commercially-produced Materials: Any mention of commercially produced materials, instruments, devices, software, etc, must be followed by the name of the manufacturer and the manufacturer's location in parentheses. Example: "... in an Excel spreadsheet (Microsoft, Inc, Redmond, Wash)."

Abbreviations: Abbreviations should be used to make manuscripts more concise. The first time an abbreviation appears, it should be placed in parentheses following the full spelling of the term (eg, "... permanent first molars (PFMs)..."). In manuscripts using more than three abbreviations, authors should use bold typeface for the first appearance of each abbreviation.

Permissions: For materials taken from other sources, a written statement from the authors and publisher giving permission to *Journal of International Dental and Medical Research* for reproduction must be provided. Waivers of copyright and statements of informed consent must accompany the manuscript when it is submitted for review. Waivers should accompany any photograph showing a human subject unless the subject's features are blocked enough to prevent identification.

Cellular Analysis In Orthodontic Tooth Movement Post Robusta Coffee Extract Administration

Herniyati^{1*}, Happy Harmono², Leliana Sandra Devi³, Sri Hernawati⁴

1. Associate Professor , Department of Orthodontic, Faculty of Dentistry, Jember University, Jember, Indonesia.

2. Lecturer, Department of Biomedical, Faculty of Dentistry, Faculty of Dentistry, Jember University, Jember, Indonesia

3. Lecturer, Head, Department of Orthodontics, Faculty of Dentistry, Jember University, Jember, Indonesia.

4. Associate Professor , Department of Oral Medicine , Faculty of Dentistry, Jember University, Jember, Indonesia

Abstract

This study aimed to analyze the number of osteoclasts, osteoblasts, fibroblasts, and the improvement of dental movement post Robusta coffee extract administration.

10 guinea pigs were divided into 2 groups i.e. group C: guinea pigs were applied using orthodontic force, and group T: guinea pigs were applied using orthodontic force and 87.5 mg / 500 g BW of Robusta coffee extract. Orthodontic force in guinea pigs was carried out using a orthodontic bracket and open coil spring with strength of 52.5 grams. Observations were conducted on the day 15 by performing histological processing to calculate of the number of osteoblasts, osteoclasts and fibroblasts. The improvement of tooth movement was measured by an X-Ray μ -CT device.

Robusta coffee extract increased the number of osteoclasts, osteoblasts, and fibroblasts. The number of osteoclasts in the compression area was greater than that in the tension area ($p < 0.05$). The number of osteoblasts and fibroblasts in the tension area was greater than that in the compression area ($p < 0.05$). The Robusta coffee extract also improved the movement of the teeth ($p < 0.05$).

Robusta coffee extract increased the number of osteoclasts, osteoblasts, fibroblasts and improved orthodontic tooth movement.

Experimental article (J Int Dent Med Res 2019; 12(3): 969-976)

Keywords: Osteoclasts, osteoblasts, fibroblasts, orthodontic tooth movement, Robusta coffee.

Received date: 06 October 2018

Accept date: 05 January 2019

Introduction

The theory of tooth movement states that in a few seconds post force application, a tooth shifts its position in the space of periodontal ligament resulting in compression in several places and tension in the other sides of periodontal ligament¹. In the tooth movement, orthodontic force will alter blood flow in the periodontal ligament and local hypoxia occurs. The O₂ tension reduction stabilizes HIF-1(hypoxia inducible factor-1), a transcription factor that activates vascular RANKL (Receptor activator of Nuclear Factor- κ B Ligand) and expression of VEGF (Vascular endothelial growth

factor) in osteoblasts and fibroblasts; osteoclast differentiation increases, causing resorption in the compression area.^{2,3,4} Hypoxia and fluid flow in the same time will promote bone remodeling and periodontal ligaments. The compressive force causes the compression area and the tension area in the periodontal ligament and is closely related to nerve and blood vessel tips. When the nerve tips are distorted, they release vasoactive neurotransmitters e.g. CGRP (calcitonin gene-related peptide) and SP (substance P), which interact with vascular endothelial cells causing vasodilatation and increases permeability with plasma leakage.^{5,6} Activated endothelium binds and recruits circulating leukocytes macrophages, and monocytes to the periodontal ligament, indicating acute inflammation.^{7,8} Leukocytes release growth factors, prostaglandins, cytokines and colony-stimulating factors that promote remodeling of tissue.^{9,10} After a few days, inflammation changes from acute to chronic and the process of proliferation involves osteoblasts, fibroblasts,

*Corresponding author:

Herniyati
Department of Orthodontics,
Faculty of Dentistry, Jember University, Jember, Indonesia,
Email: herniyati@unej.ac.id

osteoclasts, and endothelial cells.¹

Osteoclasts are bone degrading cells.¹¹ Active osteoclasts are filled with mitochondria in the cytoplasm to provide the necessary energy for bone resorption. Active osteoclasts will result in bone resorption.^{12,13} Bone resorption will subsequently lead to tooth movement of orthodontic followed by remodeling of periodontal ligament and alveolar bone.⁶ Differentiation of osteoclasts is regulated by cytokines i.e. RANKL and M-CSF (Macrophage colony-stimulating factor), which are important roles responsible for the survival and proliferation of precursor cells of osteoclast. It also causes expression of RANK in precursor cells of osteoclast generate an efficient response to signal path of the RANKL-RANK.^{11,13}

Osteoblasts are cells that bone form and have several important roles in remodeling of bone: expression of osteoclastogenic factors, production of bone matrix proteins, and mineralization of bone.¹⁴ New bone is formed in the tension area as a result of orthodontic force during orthodontic treatment.¹⁵ Osteoblasts are "non-core" and special bone-forming cells. Osteoblasts can synthesize type I collagen matrix and express Runx2 (Runt-related transcription factor-2)/Cbfa1(Core Binding Factor a-1), a master switch for differentiation of osteoblast from mesenchymal progenitor cells.¹⁶ Osteoblasts that function in bone formation are needed for remodeling in the resorption sites of compression area, and form new bone in the compression area and tension area.¹⁷

Fibroblasts are important cells that may carry out the function of collagen formation as well as resorption function or collagen destruction. In the tension area, during orthodontic tooth movement, the periodontal ligament will extend and fibroblast proliferation occurs. The fibroblasts synthesize extracellular matrix proteins including glycosaminoglycan, fibronectin, and collagen which are protein structures of periodontal connective tissue. Subsequently, it occurs bone remodeling and re-formation of periodontal cords.¹⁸ In the orthodontic tooth movement, collagen cords in the ligament of periodontal are required to continue undergoing remodeling in order to adapt to the changes of tooth position.¹⁹

The success of orthodontic treatment is influenced by many factors, including oral hygiene, periodontal health, and orthodontic strength.²⁰ A number of studies on the effects of materials and medicines on orthodontic tooth

movement have been carried out for instance medicines demonstrating the effects that inhibit orthodontic tooth movement e.g. osteoprotegerin and bisphosphonate (Pamidronat)^{21,22}, and those which may accelerate orthodontic tooth movement e.g. caffeine.^{23,24} Application of injection or topical PGE2 (Prostaglandin E2) may also improve tooth movement.^{25,26,27}

Coffee is widely consumed as beverage which has a high antioxidant content.²⁸ Coffee contains caffeine which may increase osteoclast formation through increased RANKL.^{23,29} Some compounds in coffee have antioxidant effects i.e. chlorogenic acid, ferulic, caffeic and n coumaric.³⁰ In roasted coffee, melanoidins or brown pigments will be formed which consider as strong antioxidants.³¹ Caffeic and chlorogenic acids which have antioxidant effects, may reduce oxidative stress in osteoblasts.³² The studies showed chlorogenic acid promotes osteogenesis in hAMSCs (human adipose-derived mesenchymal stem cells).³³ Caffeic acid accelerates wound healing by stimulating collagen synthesis by fibroblasts.³⁴

This study aimed to analyze the Robusta coffee extract effects on the number of osteoblasts, osteoclasts and fibroblasts, as well as the improvement of tooth movement using animal experiment i.e. guinea pigs.

Materials and methods

This experimental laboratories research used 10 guinea pigs with following criteria: male, healthy, aged 10-12 months, and weighing about 500 grams. The guinea pigs were divided randomly into 2 groups: control group (C): the guinea pigs were applied using orthodontic force and treatment group (T): the guinea pigs were applied using orthodontic force and Robusta coffee extract of 87.5 mg/500 g of BW (equivalent with that contained in 1 cup of coffee). The orthodontic force applied to guinea pigs was performed by means of anesthetizing guinea pigs using ketamine, afterward each mandible incisor of the animals was installed using a band matrix and orthodontic bracket (Ortho-technology, USA) and moved to the distal using an open coil spring (Ortho-technology, America) with strength of 52.5 grams. (Figure 1).



Figure 1. Installation of an orthodontic appliance in the guinea pigs. A band matrix and orthodontic bracket (yellow arrow) were installed on the mandible incisors, and moved distally using an open coil spring (red arrow)

Observations were made by means of sacrificing guinea pigs on the day 15, and taking their right and left mandible incisors and their periodontal tissues. The tissue was subsequently processed histologically and HE staining was performed. Calculation of the number of osteoclasts, osteoblasts and fibroblasts was conducted using a light microscope (Olympus, Tokyo, Japan). The measurement of improved tooth movement in the animals was performed by measuring from the mesial of right mandible incisor passing the top of the alveolar bone between the two teeth to the mesial left mandible incisor using Micro-Computed Tomography (μ -CT) Bruker SkyScan 1173 High X-Ray device. Energy Micro-CT at FMIPA ITB Micro-CT

Laboratory. The initial processing was repositioning of objects in 3D room, and object analysis in the form of length measurements was performed using Data Viewer software (Bruker Micro-CT, Belgium).

The data was analyzed using independent t test and paired t test with 95% level of significance ($\alpha = 0.05$). This research has been approved by the Ethical Research Committee of the Medical Faculty, Jember University, Number: 1150/H25.1.11/KE/2017.

Results

The effect of Robusta coffee extract on the number of osteoclasts, osteoblasts, fibroblasts and the improvement of right and left mandible incisor movement were shown in the Tables 1,2,3 and 4 and the Figures 2,3,4, and 5.

The mean and standard deviation of the number of osteoclasts in the control and the treatment groups in the compression and tension areas are shown in Table 1. The data shows that Robusta coffee extract administration increased the number of osteoclasts in the compression area ($p < 0.05$) and the tension area ($p > 0.05$), Robusta coffee extract increased the number of osteoclasts in the compression area greater than that in the tension area ($< 0, 05$). The histology of osteoclast in the compression and the tension areas in the Control (C) and Treatment (T) groups shown in Figure 2.

Groups	N	Σ Osteoclasts (Mean \pm Standard Deviation)		p
		Compression	Tension	
Control	5	2,140 \pm 0,114	0,220 \pm 0,130	0,000**
Treatment	5	3,940 \pm 0,114	0,240 \pm 0.114	0,000**
p		0,000*	0,803*	

Table 1. The mean and standard deviation of the number of osteoclasts and the results of different tests between the compression areas and the tension areas in the control group and treatment group

Notes : p < 0,05 = significant
 p > 0,05 = non significant
 * Based on t test
 ** Based on paired t test

Groups	N	Σ Osteoblasts (Mean \pm Standard Deviation)		p
		Compression	Tension	
Control	5	12,320 \pm 0,277	12,420 \pm 0,311	0,606**
Treatment	5	13,320 \pm 0,277	15,380 \pm 0.349	0,000**
p		0,000*	0,000*	

Table 2. The mean and standard deviation of osteoblasts and the results of different tests between the compression areas and the tension areas in the control group and treatment group.

Notes : p < 0,05 = significant
 p > 0,05 = non significant
 * Based on t test
 ** Based on paired t test

Groups	N	Σ Fibroblasts (Mean ± Standard Deviation)		p
		Compression	Tension	
Control	5	20,060 ± 0,207	24,000 ± 0,158	0,000**
Treatment	5	22,900 ± 0,339	28,580 ± 0,192	0,000**
p		0,000*	0,000*	

Table 3. The mean and standard deviation of fibroblasts, and different test results between the compression area and the tension area in the control group and treatment group

Notes : p < 0,05 = significant
 p > 0,05 = non significant
 * Based on t test
 ** Based on paired t test

Groups	n	Σ Tooth movement (mm)
Control	5	2,967 ± 0,005
Treatment	5	4,450 ± 0,002
p		0,000*

Table 4. The mean and standard deviation of the distance between the mesial of the right mandible incisor and the mesial of the left mandible incisor which shows the right and left mandible incisor movement, and the different test results between the control group and the treatment group.

Notes : p < 0,05 = significant
 * Based on t test

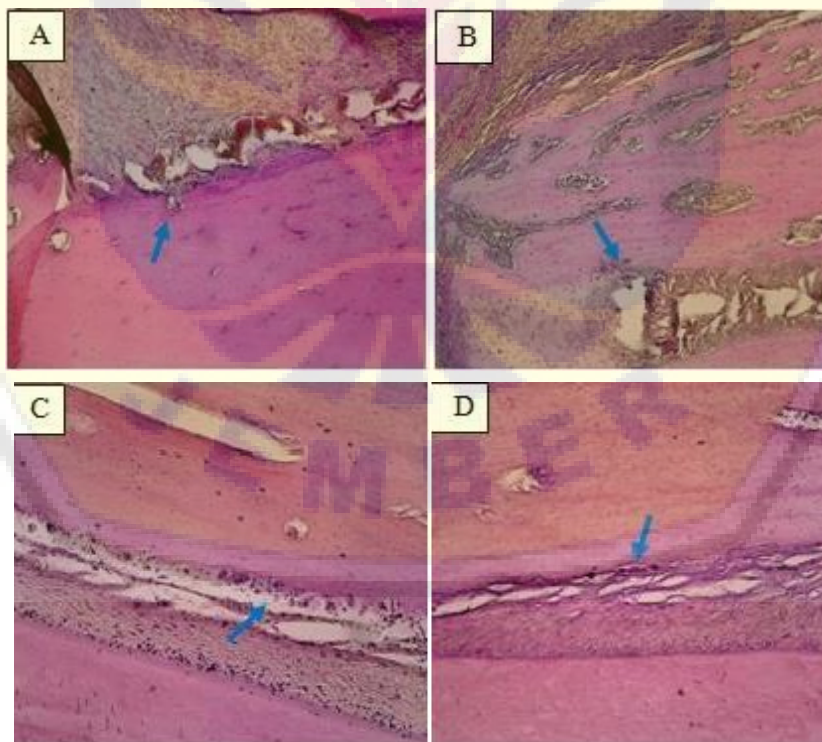


Figure 2. Osteoclasts in in periodontal ligament are marked with blue arrows: in compression area of control group (A), tension area of control group (B), compression area of treatment group (C) and tension area of reatment group (D) (HE, 100x magnification).

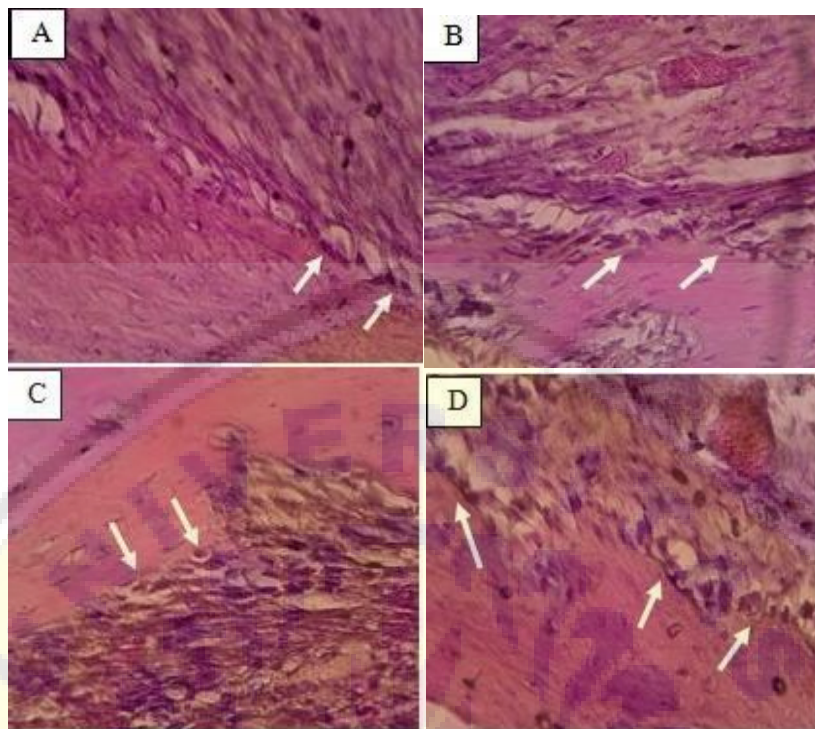


Figure 3. Osteoblasts in periodontal ligament are marked with white arrows: in compression area of control group (A), tension area of control group (B), compression area of treatment group (C) and tension area of treatment group (D) (HE, 400x magnification).

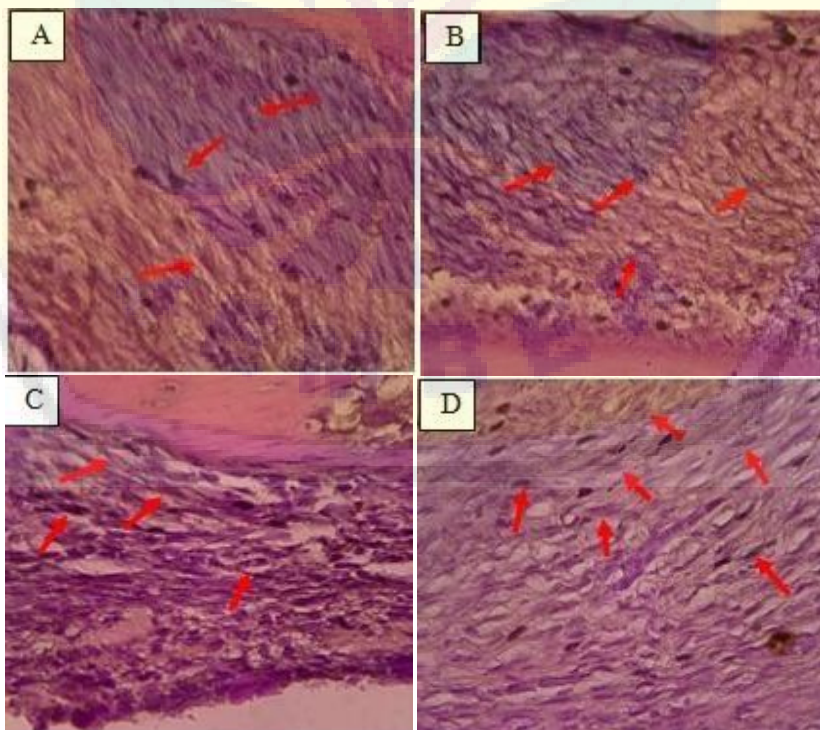


Figure 4. Fibroblasts in in periodontal ligament are marked with red arrows: in compression area of control group (A), tension area of control group (B), compression area of treatment group (C) and tension area of treatment group (D) (HE, 400x magnification).

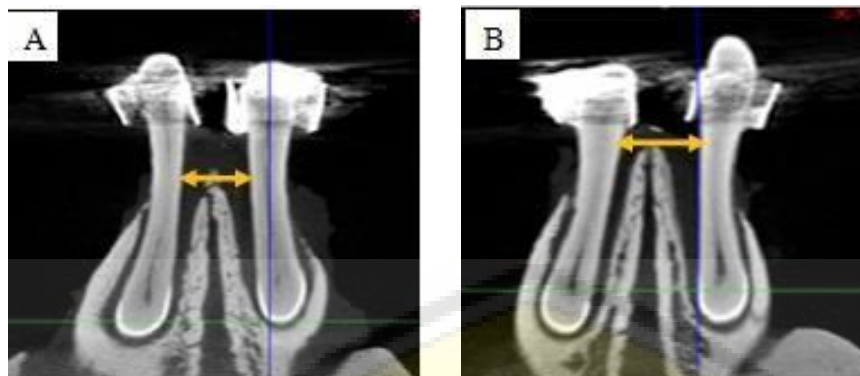


Figure 5. Improved right and left mandible incisor movement to distal which is the distance between the mesial of the right mandible incisor and the mesial left mandible incisor using X-Ray Micro-Computed Tomography (μ -CT) in the control group (A) and the treatment group (B) indicated by yellow arrow.

The mean and standard deviation of the number of osteoblasts in the control and the treatment groups in the compression and the tension areas are shown in Table 2. The data show that Robusta coffee extract administration increased the number of osteoblasts in the compression area ($p < 0.05$) and the tension area ($p < 0.05$). Robusta coffee extract increased the number of osteoblasts in the tension area greater than that in the compression area ($p < 0, 05$). The histology of osteoblasts in the compression and the tension areas in the Control (C) and Treatment (T) groups shown in Figure 3.

The mean and standard deviation of the number of fibroblasts in the control and the treatment groups in the compression and the tension areas are shown in Table 3. The data show that Robusta coffee extract increased the number of fibroblasts in the compression area ($p < 0.05$) and the tension area ($p < 0.05$). Robusta coffee extract administration increased the number of fibroblast in the tension area greater than that in the compression area ($p < 0,05$). The histology of fibroblast in the compression and the tension areas in the Control (C) and Treatment (T) groups shown in Figure 4.

The improvement of right and left mandible incisor movement using X-Ray Micro-Computed Tomography (μ -CT) was obtained by measuring the distance from the mesial of the right mandible incisor passing through the alveolar bone to the distal of the left mandible incisor in the Control (C) and Treatment (T) groups. (Figure 5). The measurement results were a distance between the mesial of the right mandible incisor and the mesial of the left mandible incisor are shown in Table 4.

Table 4 shows the mean and standard deviation of the distance between the mesial of the right mandible incisors and the mesial of the left mandible incisors indicating the movement of the right and left mandible incisors to the distal in the control group and treatment group. The test results showed that administration of the Robusta coffee extract improved the distance between the mesial of the right mandible incisors and the mesial of the left mandible incisors compared to the control group ($p < 0.05$)

Discussion

The ability of the tooth to move through the bone depends on the periodontal ligament attached to the tooth to the adjacent bone. The periodontal ligament is a structure of solid fibrous connective tissue consisting of cells, collagen cords, nerve and the components of vascular, and tissue fluid. Cells contained in the periodontal ligament include: 1) synthetic cells i.e. fibroblasts ranged 50-60%, osteoblasts, cementoblasts, 2) resorptive cells i.e. osteoclasts, fibroblasts and cementoclasts, 3) progenitor cells including undifferentiated mesenchymal cells, 4) defense cells i.e. macrophages, lymphocytes and mast cells, and 5) epithelial cells which are remnants of the epithelial root sheath of Hertwig.¹

Robusta coffee extract increases the number of osteoclasts in the compression and the tension areas compared to the control, while in the compression area the number of osteoclasts is more than that in the tension area. This is because coffee contains caffeine which may increase osteoclast formation through an increase in RANKL.²³ RANKL which is a

regulator of bone remodeling during tooth movement,³⁵ subsequently binds to RANK on precursors of osteoclast, which promotes osteoclast differentiation and proliferation allowing osteoclasts become active and result in increased resorption of bone.^{12,13} Bone resorption will shortly cause orthodontic tooth movement, followed by remodeling of alveolar bone and periodontal ligament.⁶ Increased osteoclastogenesis in the compression area of periodontal ligament that causes an increase in tooth movement is also evident in this study which showed an increase in the right and left mandible incisor movement towards distal.

Differentiation of osteoclasts is regulated by the transcription factor NFATc1 (Nuclear Factor of Activated T-cells 1)¹¹. NFATc1 is the main regulator that induces osteoclast differentiation and plays an important role in fusion and activation of osteoclast through increased regulation of various genes responsible for osteoclast attachment, migration, acidification, degradation of inorganic and bone organic matrix.³⁶ The research showed that Robusta coffee extract increased NFATc1 in rats induced by orthodontic forces.³⁷

Osteoblasts function to form bone, necessary to remodeling the resorption area in the compression area and forming new bone in the compression area and tension area.¹⁷ Differentiation of osteoblast in alveolar bone involves an increase in expression of Runx2/Cbfa1.³⁸ Runx2 induces differentiation of multipotent mesenchymal cells into immature osteoblasts.³⁹

Robusta coffee extract increases the number of osteoblasts in compression and tension areas due to the content of chlorogenic, caffeic ferulic, and n coumaric acids which has antioxidant properties.³³ ROS may increase peroxidation of lipid which is the main cause of damage to cell membranes, the structure and function of osteoblast cells. The results studies have also shown that oxidative stress reduces the rate of bone formation by decreasing the osteoblasts differentiation and life.⁴⁰ Chlorogenic acid and caffeic acid convert free radicals into stable products⁴¹, may reduce oxidative stress in osteoblasts,³³ thus increasing differentiation and the life of osteoblasts, as well as important for stimulating osteoblast activity.⁴² The results showed that Robusta coffee extract increased the Runx2 in rats induced with orthodontic force.³⁷

Application of orthodontic force may emerge hyalinization, cause necrosis of periodontal ligament cells, and bone resorption, resulting in damage to the periodontal cord structure⁴³. Fibroblast cells experience swelling in the endoplasmic reticulum, vacuole formation, fibroblast cells rupture and cytoplasmic loss.⁶

Robusta coffee extract increased the number of fibroblasts on the compression and tension area compared to those not administered with Robusta coffee extract. It occurs because the content of coffee is chorogenic acid and caffeic acid may increase the number of fibroblasts⁴⁴. Other studies have also shown that topical application of chorogenic acid may increase TGF β 1 expression on days 6 to 15⁴⁵, which functions as a factor that stimulates fibroblasts and osteoblasts in the periodontal ligament and proliferates to improve protein matrix, in addition TGF β 1 also helps mediate macrophages to clear tissue debris, spread angiogenesis, help recrystallize and increase collagen deposition in the proliferation phase⁴⁶. Topical application of caffeic acid found in coffee may increase collagen and fibroblast cell proliferation on days 10 and 15.⁴⁷

The number of osteoblasts and fibroblasts in the tension area is greater than that in the compression area. It occurs because the large areas in tension area required more osteoblasts and fibroblasts for the formation and repairing of bone tissue and periodontal ligaments.

Conclusions

The administration of Robusta coffee extract increases the number of osteoblasts, osteoclasts and fibroblasts. The Robusta coffee extract improves the movement of mandible incisors to distal direction.

Acknowledgement

The authors would like to thank to the staff of the Biomedical Laboratory, Dentistry Faculty, Jember University for the services provided in the histology process, and to the staff of Laboratory of FMIPA ITB Bandung for the tooth movement analysis using X-Ray Micro-Computed Tomography (μ -CT).

References

1. Li Y, Jacox LA, Little SH, Ko CC . Orthodontic tooth movement: The biology and clinical implications. The Kaohsiung Journal of Medical Sciences Type: Review, Journal Article 2018; 34(4):207-214.
2. Dandajena TC, Ilnat MA, Disch B, Thorpe J, Currier G.F. Hypoxia triggers a HIF-mediated differentiation of peripheral blood mononuclear cells into osteoclasts. *Orthod Craniofac Res* 2012;15: 1-9.
3. Park HJ, Baek KH, Lee HL, Kwon A, Hwang H, Qadir AS., *et al*. Hypoxia inducible factor-1alpha directly induces the expression of receptor activator of nuclear factor-kappaB ligand in periodontal ligament fibroblasts. *Mol Cells* 2011;31: 573-578.
4. Huang H, Williams RC, Kyrkanides S. Accelerated orthodontic tooth movement: molecular mechanisms . *Am J Orthod Dentofac Orthop*, 2014; 146: 620-632.
5. Wise GE, King GJ. Mechanisms of tooth eruption and orthodontic tooth movement. *J Dent Res*. 2008; 87: 414-434.
6. Krishnan V and Davidovitch Z. 2006. Cellular, molecular, and tissue-level reactions to orthodontic force. *American Journal of Orthodontics and Dentofacial Orthopedics*, 129(4):469-e1-32.
7. Krishnan V and Davidovitch Z. On a path to unfolding the biological mechanisms of orthodontic tooth movement. *J Dent Res*. 2009; 88: 597-608
8. Middleton J, Patterson AM, Gardner L, Schmutz C, Ashton BA. Leukocyte extravasation: chemokine transport and presentation by the endothelium. *Blood* 2002;100: 3853-3860.
9. Ren Y, Vissink A. Cytokines in crevicular fluid and orthodontic tooth movement. *Eur J Oral Sci*, 2008; 116:89-97.
10. Yamaguchi M, Kojima T, Kanekawa M, Aihara N, Nogimura A, Kasa K. Neuropeptides stimulate production of interleukin-1 beta, interleukin-6, and tumor necrosis factor-alpha in human dental pulp cells. *Inflamm Res*. 2004;53:199-204.
11. Kim JH and Kim N. Regulation of NFATc1 in Osteoclast Differentiation. *J Bone Metab* 2014;21(4):233-241.
12. Meikle CM, 2006. The tissue, cellular, and molecular regulation of orthodontic tooth movement: 100 years after Carl Sandstedt, *European Journal of Orthodontics* 28, pp. 221-40.
13. Yamaguchi M, RANKL/OPG During *Orthod Craniofac Res* , vol.12, pp 113-119.
14. Karsenty G. Transcriptional Control of Skeletogenesis. *Annu. Rev. Genomics Hum. Genet* 2008; 9: 183-196.
15. Sprogar S, Vaupotic T, Cör A, Drevenšek M, and Drevenšek G. The endothelin system mediates bone modeling in the late stage of orthodontic tooth movement in rats. *Bone* 2008;43(4):740-747.
16. Ducey P, Schinke T, Karsenty G. The Osteoblast: A Sophisticated Fibroblast under Central Surveillance. *Science* 2000; 289 (5484): 1501-1504
17. Kawakami M and Yamamoto TT. Local injection of 1,25-dihydroxyvitamin D3 enhanced bone formation for tooth stabilization after experimental tooth movement in rats . *J Bone Miner Metab* 2004;2:541-546
18. Meng Y, Han X, Huang L, Bai D, Yu H, He Y. 2010. Orthodontic mechanical tension effects on the myofibroblast expression of alpha-smooth muscle actin. *The Angle Orthodontist* 2010; 80(5): 912-918
19. Apajalahti S, Peltola JS. Apical root resorption after orthodontic treatment. A Restrospective Study. *Eur J of Orthod*, 2007; 29: 12-408
20. Cardaropoli D and Gaveglio L. "The influence of orthodontic movement on periodontal tissues level," *Seminars in Orthodontics* 2007; 13(4): 234–245
21. Matthew D.Dunn MD, Park CH, Kostenuik PJ, Kapila S, and Giannobile WV. Local delivery of osteoprotegerin inhibits mechanically mediated bone modeling in orthodontic tooth movement. *Bone* 2007;41(3):446-455.
22. Venkataramana V, Rajasigamani K, Nirmal Madhavan, S.N.Reddy, Karthik, and Kurunji Kumaran N. Inhibitory effect of bisphosphonate [pamidronate] on orthodontic tooth movement in newzealand albino rabbits. *Journal of International Dental and Medical Research* 2012;5(3): 136-142.
23. Jianru Y, Boxi Y, and Meile L "et al". Caffeine may enhance orthodontic tooth movement through increasing osteoclastogenesis induced by periodontal ligament cells under compression. *Archives of Oral Biology* 2016;64:51-60
24. Herniyati, Narmada IB, and Soetjipto. The Role of Rankl and Opg in Alveolar Bone Remodeling and Improvement of Orthodontic Tooth Movement Post Coffee Brew Administration. *Journal of International Dental and Medical Research* 2017;10(1):84-88.
25. Kale S, Kocadereli I, Atilla P, and Aşan E. Comparison of the effects of 1,25 dihydroxycholecalciferol and prostaglandin E₂ on orthodontic tooth movement. *American Journal of Orthodontics and Dentofacial Orthopedics* 2004;125(5):607-614.
26. Seifi M, Eslami B, and Saffar AS. The effect of prostaglandinE 2 and calcium gluconate on orthodontic tooth Movement and root resorption in rats. *Eur J Orthod* 2003;25:199 - 204
27. Widayati R, Suniarti DF, Poerwaningsih EH, and Iskandriati D. Root Resorption and RANKL Concentration in Orthodontic Tooth Movement Accompanied by Topical PGE2 Gel Application. *Journal of International Dental and Medical Research* 2016;9(3):228-232.

Human and Animal Subjects: Manuscripts of research involving human or animal subjects must state in the Methods section that the study was approved by an Institutional Review Board (IRB) or other institutional research ethics committee using language similar to "...this institutionally approved study..." IRB approval for human subjects must also be obtained if the study involved the use of tissues from humans (eg, extracted teeth), or work produced by humans (eg, systematic analyses and meta-analyses). When human subjects have been used, the text should indicate that informed consent was obtained from all participating adult subjects, and parents or legal guardians of minors or incapacitated adults. If required by the authors' institution, informed assent must be obtained from participating children at or above the age specified by the institution. The cover letter for the manuscript must contain a statement similar to the following: "The procedures, possible discomforts or risks, as well as possible benefits were explained fully to the human subjects involved, and their informed consent was obtained prior to the investigation."

Figures: Graphics/photos should be provided at a minimum resolution of 600 dpi as a .tif or .jpg file. Photomicrographs must include a scale labeled with a convenient unit of length (eg, 50 μm). Figures should be inserted at the end of the main Word document. Figures should be numbered in Arabic numerals in the order of the first citation in the text. Legends for each figure must be printed on a separate page. Include a key for symbols or letters used in the figures.

Figure legends should be understandable without reference to the text. A key for any symbols or letters used in the figure should be included. Abbreviations should be explained in a footnote to the figure. If illustrations, tables, or other excerpts are included from copyrighted works the author is responsible for obtaining written permission from the copyright holder prior to submitting the final version of the paper. Full credit must be given to such sources with a superscript reference citation in the figure legend. Reference citations in figure legends or captions should follow numerically the reference number in the text immediately preceding mention of the figure. Figures take up additional page space and should be limited to those that add value to the text.

Tables: Tables should be double-spaced, appear on separate pages, and should be titled and numbered in Arabic numerals in the order of the first citation in the text. Short headings should appear at the top of each column. Explanatory matter should be placed in captions, not in the title. For footnotes, use the following symbols in this sequence: *, †, ‡, §. Tables should be understandable without alluding to the text. Due to space limitations, only tables adding value to the text should be included.

Acknowledgments: Funding and other sources of support must be disclosed in the *Acknowledgements* section. Personal acknowledgments should be limited to appropriate professionals who have contributed intellectually to the paper but whose contribution does not justify authorship.

References: References should be relevant to the material presented and identified by superscript Arabic numerals in the text.

A list of all references should appear at the end of the paper in numeric order as they are cited in the text. Journal abbreviations are those used by Index Medicus. Reference style is that used by the Journal of the American Dental Association (http://www.ada.org/prof/resources/pubs/jada/authors/auth_general.asp as #style).

The following are sample *style* references:

Journal: Stephane A. Management of Congenital Cholesteatoma with Otoendoscopic Surgery: Case Report. *Turkiye Klinikleri J Med Sci* 2010;30(2):803-7.

For journals, list all authors when there are 6 or fewer; when there are 7 or more, list the first 3, then "et al." Page numbers should be elided where possible. For example: 12-8, 347-51, 191-5.

Book: Bixler D. Genetic aspects of dental anomalies. In: McDonald RE, Avery DR, eds. *Dentistry for the Child and Adolescent*. 5th ed. Philadelphia: CV Mosby Co;1987:90-116.

Article, report, or monograph issued by a committee, institution, society, or government agency: *Medicine for the public: Women's health research*. Bethesda, Md.: U.S. Department of Health and Human Services, Public Health Service, National Institutes of Health; 2001. DHHS publication 02-4971.

World Wide Web: Ectodermal dysplasia cases and main targets. Available at: "<http://portal.ektodermaldisplazi.com/index.phpmod=article&cat=Pedodonti>". Accessed January 21, 2008.

Authors citing material from the World Wide Web should use WebCite (www.webcitation.org), a free service for *org* authors who wish to archive their Web references to ensure that cited Web material will remain available to readers in the future. Web citations archived on WebCite will not disappear in the future.

Authors should provide direct references to original sources whenever possible. Avoid using abstracts as references.

Avoid references to papers accepted but not yet published, if possible. If such a citation is necessary, these papers should be cited as being "in press," and verification that they have been accepted for publication must be provided.

Where possible, references of easily accessible material are preferable to dissertations, theses, and other unpublished documents. Authors should avoid citing "personal communication" unless it provides essential information not available from a public source. In those cases, the name of

the individual providing the information and the date of communication should be provided in parentheses in the text and not as a numbered reference.

Authors should obtain written permission and confirmation of accuracy from the source of a personal communication; this permission should be submitted as a supplementary document at the time of manuscript submission.

Authors should verify the accuracy of all references and are responsible for ensuring that no cited reference contains material that was retracted or found to be in error subsequent to its publication.

Digital Repository Universitas Jember

Copyright: All authors must agree to the terms of copyright transfer as indicated along with the manuscript submission process.

The Ektodermal Displazi Gurubu Türkiye owns copyright of any contribution, and its licensees have the right to use, reproduce, transmit, derivate, publish, and distribute the contribution, in the journal or otherwise, in any form or medium. Authors will not use or authorize the use of the contribution without the Ektodermal Displazi Gurubu Türkiye's written consent, except as may be allowed by world fair use law.



Journal of International Dental and Medical Research

<http://www.jidmr.com>

Prof. Dr. Izzet YAVUZ

MSc, PhD, D Ped Dent.

Pediatric Dentistry

Faculty of Dentistry, University of Dicle

21280 Diyarbakir, TURKEY

Tel: +90 412 248 81 01 / 3426

Fax: +90 412 248 81 00

E-mail: izzetyavuz@hotmail.com; iyavuz@dicle.edu.tr

ECTODERMAL DYSPLASIA GROUP – TURKEY

<http://www.ektodermaldisplazi.com>

