



frontiers in Microbiology

Molecular and Biological Characterization of Ralstonia Phage RsoM1USA, a New Species of *P2virus*, Isolated in the United States

Hardian Susilo Addy^{1,2}, Abdelmonim Ali Ahmad^{1,3}
and Qi Huang^{1*}

1. Floral and Nursery Plants Research Unit, United States National Arboretum, United States Department of Agriculture—Agricultural Research Service, Beltsville, MD, United States
2. Department of Plant Protection, Faculty of Agriculture, University of Jember, Jember, Indonesia
3. Department of Plant Pathology, Faculty of Agriculture, Minia University, El-minia, Egypt

in Microbiology (<https://www.frontiersin.org/journals/microbiology>)

This section appears in 2 journals v

Virolog

Search in this section



All Roles

889 Editor(s)

By role Most viewed Most publications

(<https://loop.frontiersin.org/people/14796/overview>)

SPECIALTY CHIEF EDITOR(S) >>



(<https://loop.frontiersin.org/people/14796/overview>)

Akio Adachi (<https://loop.frontiersin.org/people/14796/overview>)
Department of Microbiology, Kansai Medical University
Hirakata, Japan

Specialty Chief Editor
Virology

294 publications
166,001 views
324 followers

86 keywords

Follow

Helene Sanfacon (<https://loop.frontiersin.org/people/27353/overview>)
Agriculture and Agri-Food Canada (AAFC)
Ottawa, Canada

Specialty Chief Editor
Virology

90 publications
30,270 views
108 followers

83 keywords

Follow

(<https://loop.frontiersin.org/people/212878/overview>)

ASSOCIATE EDITOR(S) >>



(<https://loop.frontiersin.org/people/212878/overview>)

Patricia V Aguilar (<https://loop.frontiersin.org/people/212878>)
University of Texas Medical Branch at Galveston
Galveston, United States

Associate Editor
Virology

47 publications
1,406 views
56 followers

105 keywords

Follow

Hirofumi Akari (<https://loop.frontiersin.org/people/14949/overview>)
Primate Research Institute, Kyoto University
Inuyama, Japan

Associate Editor
Virology

137 publications
26,204 views
121 followers

130 keywords

Follow



Ramy Karam Aziz
(<https://loop.frontiersin.org/people/196396>)
Department of Microbiology and Immunology, Faculty of Pharmacy, Cairo University
Cairo, Egypt

Associate Editor
Virology

79 publications
13,412 views
109 followers

171 keywords

Follow



Ashley C Banyard
(<https://loop.frontiersin.org/people/24253>)
Animal and Plant Health Agency (United Kingdom)
Aldershot, United Kingdom

Associate Editor
Virology

80 publications
1,103 views
46 followers

177 keywords

Follow



Shiu-Wan Chan (<https://loop.frontiersin.org/people/103770/overview>)
University of Manchester
Manchester, United Kingdom

Associate Editor
Virology

28 publications
17,500 views
25 followers

19 keywords

Follow



Saurabh Chattopadhyay
(<https://loop.frontiersin.org/people/125083>)
College of Medicine and Life Sciences, University of Toledo
Toledo, United States

Associate Editor
Virology

37 publications
9,432 views
17 followers

95 keywords

Follow



Mei-Ru Chen (<https://loop.frontiersin.org/people/16070/overview>)
National Taiwan University
Taipei, Taiwan

Associate Editor
Virology

42 publications
25,486 views
40 followers

121 keywords

Follow



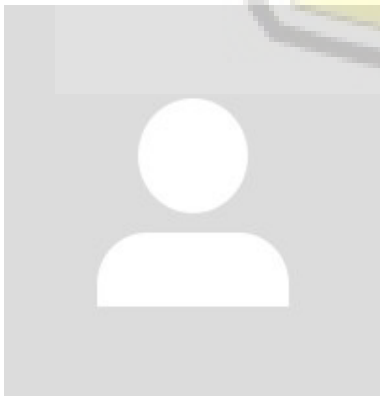
Robert Czajkowski
(<https://loop.frontiersin.org/people/354326>)
University of Gdansk
Gdansk, Poland

Associate Editor
Virology

45 publications
11,697 views
44 followers

112 keywords

Follow



Henryk Hanokh Czosnek
(<https://loop.frontiersin.org/people/224147>)
Hebrew University of Jerusalem
Jerusalem, Israel

Associate Editor



C. Todd Davis (<https://loop.frontiersin.org/people/599817/overview>)
Centers for Disease Control and Prevention (CDC)
Atlanta, United States

Associate Editor



Marco De Andrea
(<https://loop.frontiersin.org/people/157305>)
Department of Public Health and Pediatrics, School of Medicine, University of Turin
Torino, Italy

Associate Editor

128 publications
3,854 views
45 followers

338 keywords

Follow



Ralf Georg Dietzgen
(<https://loop.frontiersin.org/people/128413>)

University of Queensland
Brisbane, Australia

Associate Editor
Virology

62 publications
142 views
23 followers

150 keywords

Follow



Dirk Dittmer (<https://loop.frontiersin.org/people/25418/overview>)

University of North Carolina at Chapel Hill
Chapel Hill, United States

Associate Editor
Virology

83 publications
8,707 views
59 followers

177 keywords

Follow



Helene Dutartre (<https://loop.frontiersin.org/people/58370/overview>)

UMR5308 Centre International de Recherche en
Infectiologie (CIRI)
Lyon, France

Associate Editor
Virology

116 publications
3,974 views
95 followers

48 keywords

Follow



Nejat Duzgunes (<https://loop.frontiersin.org/people/71148/overview>)

Arthur A. Dugoni School of Dentistry, University of the
Pacific
San Francisco, United States

Associate Editor
Virology

167 publications
7,506 views
59 followers

384 keywords

Follow



Hideki Ebihara (<https://loop.frontiersin.org/people/244781/overview>)

Mayo Clinic
Rochester, United States

Associate Editor
Virology

12,828 views
28 followers

82 keywords

Follow



Herman W Favoreel
(<https://loop.frontiersin.org/people/77781>)

Ghent University
Ghent, Belgium

Associate Editor
Virology

212 publications
442 views
8 followers

493 keywords

Follow



104 publications
4,026 views
105 followers

250 keywords

Follow



119 publications
5,825 views
59 followers

264 keywords

Follow





Ricardo Flores (<https://loop.frontiersin.org/people/44849/overview>)
Institute of Molecular and Cellular Biology of Plants,
Polytechnic University of Valencia
Valencia, Spain

Associate Editor
Virology

179 publications
38,170 views
74 followers

273 keywords

Follow



Svetlana Folimonova (<https://loop.frontiersin.org/people/61163>)
University of Florida
Gainesville, United States

Associate Editor
Virology

32 publications
30,380 views
49 followers

57 keywords

Follow



Souvik Ghosh (<https://loop.frontiersin.org/people/132215/overview>)
Ross University School of Veterinary Medicine
Basseterre, Saint Kitts and Nevis

Associate Editor
Virology

83 publications
7,981 views
31 followers

123 keywords

Follow



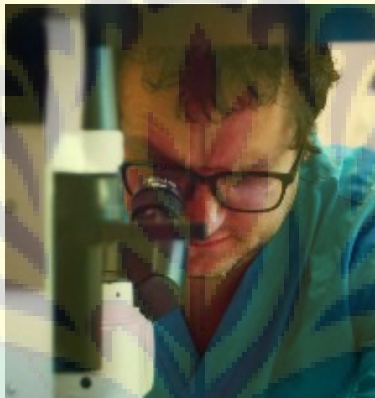
David Gilmer (<https://loop.frontiersin.org/people/79097/overview>)
Université de Strasbourg
Strasbourg, France

Associate Editor
Virology

43 publications
1,078 views
40 followers

62 keywords

Follow



Douglas Paul Gladue (<https://loop.frontiersin.org/people/593021>)
Plum Island Animal Disease Center, Agricultural Research
Service, United States Department of Agriculture
Greenport, United States

Associate Editor
Virology

40 publications
355 views
14 followers

91 keywords

Follow



Andrzej Gorski (<https://loop.frontiersin.org/people/360356/overview>)
Ludwik Hirszfeld Institute of Immunology and
Experimental Therapy (PAN)
Wrocław, Poland

Associate Editor
Virology

385 publications
61,336 views
61 followers

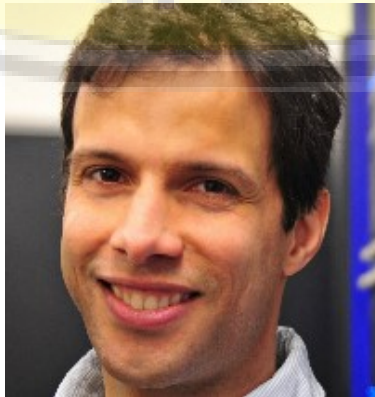
782 keywords

Follow



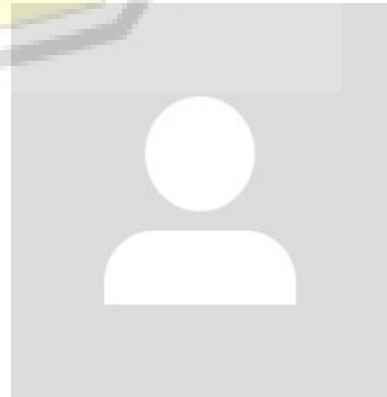
Aeron Hurt (<https://loop.frontiersin.org/people/289097/overview>)
WHO Collaborating Centre for Reference and Research
on Influenza (VIDRL)
Melbourne, Australia

Associate Editor



Lars Kaderali (<https://loop.frontiersin.org/people/197232/overview>)
Universitätsmedizin Greifswald
Greifswald, Germany

Associate Editor



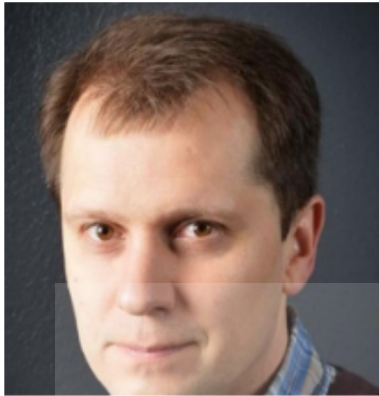
Chieko Kai (<https://loop.frontiersin.org/people/14953/overview>)
The University of Tokyo
Bunkyo, Japan

Associate Editor

122 publications
14,267 views
66 followers

212 keywords

Follow



Denis Kainov (<https://loop.frontiersin.org/people/471457/overview>)

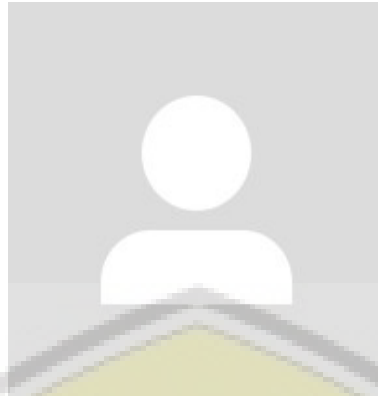
Norwegian University of Science and Technology
Trondheim, Norway

Associate Editor
Virology

100 publications
75,680 views
74 followers

190 keywords

Follow



Fatah Kashanchi (<https://loop.frontiersin.org/people/25185/overview>)

George Mason University
Fairfax, United States

Associate Editor
Virology

207 publications
21,971 views
109 followers

513 keywords

Follow



Hirokazu Kimura (<https://loop.frontiersin.org/people/17329>)

Graduate School of Health Science, Gunma Paz
University
Takasaki, Japan

Associate Editor
Virology

61 publications
1,134 views
24 followers

132 keywords

Follow



Jason Kindrachuk (<https://loop.frontiersin.org/people/137706>)

University of Manitoba
Winnipeg, Canada

Associate Editor
Virology

39 publications
55,618 views
45 followers

42 keywords

Follow



Anna Kramvis (<https://loop.frontiersin.org/people/588840/overview>)

University of the Witwatersrand
Johannesburg, South Africa

Associate Editor
Virology

232 publications
85,031 views
102 followers

612 keywords

Follow



Erna Geessien Kroon (<https://loop.frontiersin.org/people/532679>)

Department of Microbiology, Institute of Biological
Sciences, Federal University of Minas Gerais
Belo Horizonte, Brazil

Associate Editor
Virology

53 publications
2,061 views
42 followers

9 keywords

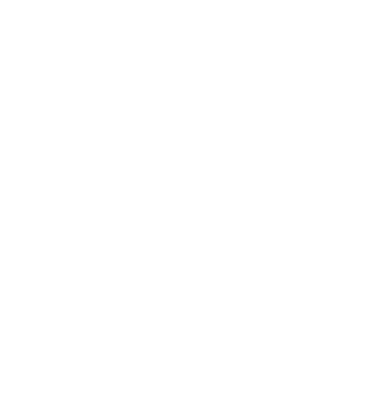
Follow



1,959 views
16 followers

219 keywords

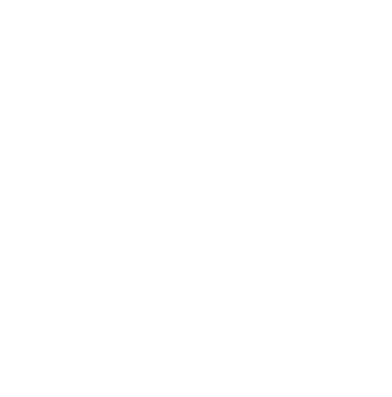
Follow



226 publications
12,543 views
105 followers

486 keywords

Follow





Andrew S Lang (<https://loop.frontiersin.org/people/269749/overview>)
Memorial University of Newfoundland
St. John's, Canada

Associate Editor
Virology

66 publications
6,088 views
49 followers

103 keywords

Follow



Olivier LEMAIRE (<https://loop.frontiersin.org/people/569944/overview>)
INRA UMR1131 Santé de la Vigne et Qualité du Vin
Colmar, France

Associate Editor
Virology

54 publications
6,811 views
24 followers

140 keywords

Follow



Jianrong Li (<https://loop.frontiersin.org/people/198126/overview>)
The Ohio State University
Columbus, United States

Associate Editor
Virology

1 publications
993 views
5 followers

Follow



Vincenzo Lionetti (<https://loop.frontiersin.org/people/69116>)
Sapienza University of Rome
Rome, Italy

Associate Editor
Virology

24 publications
43,357 views
75 followers

74 keywords

Follow



Juan E Ludert (<https://loop.frontiersin.org/people/476920/overview>)
Center for Research and Advanced Studies (CINVESTAV)
México City, Mexico

Associate Editor
Virology

60 publications
3,871 views
12 followers

Follow



Katsumi Maenaka (<https://loop.frontiersin.org/people/17803>)
Hokkaido University
Sapporo, Japan

Associate Editor
Virology

136 publications
19,276 views
63 followers

372 keywords

Follow



Gkikas Magiorkinis (<https://loop.frontiersin.org/people/451207>)
National and Kapodistrian University of Athens
Athens, Greece

Associate Editor



Manuel Martinez Garcia (<https://loop.frontiersin.org/people/134854>)
University of Alicante
San Vicente del Raspeig, Spain

Associate Editor



William Michael McShan (<https://loop.frontiersin.org/people/16801>)
University of Oklahoma Health Sciences Center
Oklahoma City, United States

Associate Editor

72 publications
15,184 views
43 followers

134 keywords

Follow

33 publications
10,406 views
65 followers

80 keywords

Follow

43 publications
14,665 views
51 followers

42 keywords

Follow



Martin Michaelis (<https://loop.frontiersin.org/people/19228/overview>)

University of Kent
Canterbury, United Kingdom

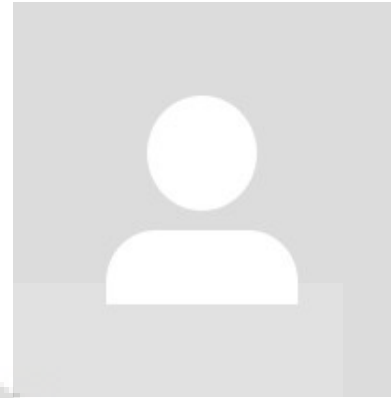
Associate Editor
Virology



Peter Moffett (<https://loop.frontiersin.org/people/26819/overview>)

Université de Sherbrooke
Sherbrooke, Canada

Associate Editor
Virology



Gregory William Moseley (<https://loop.frontiersin.org/people/36220>)

Monash University
Melbourne, Australia

Associate Editor
Virology

135 publications
7,132 views
34 followers

416 keywords

Follow

54 publications
20,413 views
87 followers

55 keywords

Follow

43 publications
670 views
25 followers

139 keywords

Follow



Christian Muenz (<https://loop.frontiersin.org/people/15937/overview>)

University of Zurich
Zürich, Switzerland

Associate Editor
Virology



Jesús Navas-Castillo (<https://loop.frontiersin.org/people/78142>)

Institute of Subtropical and Mediterranean
Hortofruticultura La Mayora (IHSM)
Málaga, Spain

Associate Editor
Virology



Michael Nevels (<https://loop.frontiersin.org/people/16080/overview>)

University of St Andrews
St Andrews, United Kingdom

Associate Editor
Virology

18 publications
91,478 views
72 followers

61 keywords

Follow

167 publications
7,184 views
58 followers

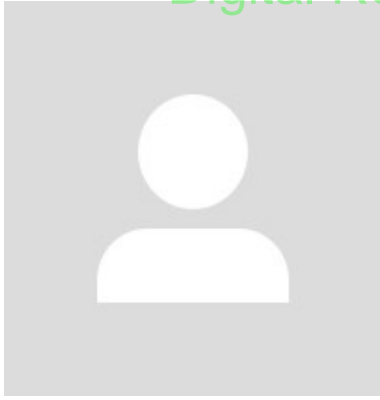
175 keywords

Follow

34 publications
4,778 views
30 followers

101 keywords

Follow



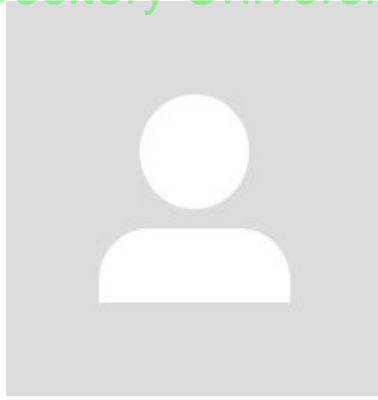
Anthony Nicola (<https://loop.frontiersin.org/people/467032/overview>)
Washington State University
Pullman, United States

Associate Editor
Virology

47 publications
1,953 views
15 followers

99 keywords

Follow



Takeshi Noda (<https://loop.frontiersin.org/people/38596/overview>)
The University of Tokyo
Bunkyo, Japan

Associate Editor
Virology

68 publications
48,096 views
47 followers

162 keywords

Follow



Masako Nomaguchi (<https://loop.frontiersin.org/people/17573>)
Graduate School of Medical Sciences, Tokushima
University
Tokushima, Japan

Associate Editor
Virology

78 publications
136,042 views
47 followers

176 keywords

Follow



Slobodan Paessler (<https://loop.frontiersin.org/people/214560>)
University of Texas Medical Branch at Galveston
Galveston, United States

Associate Editor
Virology

96 publications
27,353 views
73 followers

236 keywords



Daniel Roberto Perez (<https://loop.frontiersin.org/people/492772>)
University of Georgia
Athens, United States

Associate Editor
Virology

163 publications
16,117 views
61 followers

274 keywords

Follow



Rosa Maria Pintó (<https://loop.frontiersin.org/people/418156/overview>)
University of Barcelona
Barcelona, Spain

Associate Editor
Virology

130 publications
1,074 views
13 followers

10 keywords

Follow



Guido Poli (<https://loop.frontiersin.org/people/23674/overview>)
Vita-Salute San Raffaele University
Milan, Italy

Associate Editor



Jianming Qiu (<https://loop.frontiersin.org/people/223955/overview>)
University of Kansas Medical Center
Kansas City, United States

Associate Editor



Christophe Ritzenthaler (<https://loop.frontiersin.org/people/22774>)
Centre National de la Recherche Scientifique (CNRS)
Paris, France

Associate Editor

209 publications
2,975 views
121 followers

513 keywords

Follow

90 publications
3,901 views
20 followers

52 keywords

Follow

59 publications
11,329 views
59 followers

186 keywords

Follow



Barry Rockx (<https://loop.frontiersin.org/people/299711/overview>)

Erasmus University Rotterdam
Rotterdam, Netherlands

Associate Editor
Virology

56 publications
1,428 views
43 followers

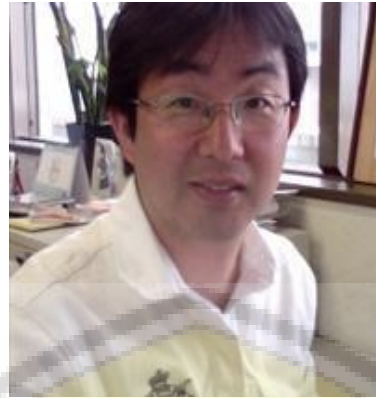
159 keywords

Follow

149 publications
68,099 views
102 followers

393 keywords

Follow



Akihide Ryo (<https://loop.frontiersin.org/people/14964/overview>)

Yokohama City University
Yokohama, Japan

Associate Editor
Virology

Home (<https://www.frontiersin.org/Journal/Frontiers.aspx>)
About Frontiers (<https://www.frontiersin.org/about>)
Journals A-Z (<https://www.frontiersin.org/about/journalseries>)
Institutional Membership (https://www.frontiersin.org/about/Institutional_Membership)

Contact (<https://www.frontiersin.org/about/contact>)
News (<https://blog.frontiersin.org>)

Submit (<https://www.frontiersin.org/submissioninfo>)
FAQs (<https://frontiers.zendesk.com/hc/en-us>)
Terms & Conditions (<https://www.frontiersin.org/TermsandConditions.aspx>)
Privacy Policy (<https://www.frontiersin.org/legal/privacy-policy>)

Newsletters (<http://connect.frontiersin.org/subscriptions/subscribe>)
RSS/Twitter (<https://blog.frontiersin.org/2013/11/01/frontiers-social-media-and-rss/>)
Careers (<https://www.frontiersin.org/Careers>)



Tue, 05 March 2019



New articles in the field of

Microbiology

FRONTIERS IN MICROBIOLOGY

Section "Evolutionary and Genomic Microbiology"

[A Mini-*ISY100* Transposon Delivery System Effective in \$\gamma\$ Proteobacteria](#)

Emanuele Conte, Linda Mende, Ian Grainge, and Sean D. Colloms

[Commentary: Genome-Based Taxonomic Classification of the Phylum Actinobacteria](#)

Radhey S. Gupta

[Crosstalk Regulation Between Bacterial Chromosome Replication and Chromosome Partitioning](#)

Gregory T. Marczynski, Kenny Petit, and Priya Patel

[Evolutionary Patterns of Thylakoid Architecture in Cyanobacteria](#)

Jan Mareš, Otakar Strunecký, Lenka Bučinská, and Jana Wiedermannová

[Genomes of Neutrophilic Sulfur-Oxidizing Chemolithoautotrophs Representing 9 Proteobacterial Species From 8 Genera](#)

Tomohiro Watanabe, Hisaya Kojima, Kazuhiro Umezawa, Chiaki Hori, Taichi E. Takasuka, Yukako Kato, and Manabu Fukui

[Genomic Analyses of >3,100 Nasopharyngeal Pneumococci Revealed Significant Differences Between Pneumococci Recovered in Four Different Geographical Regions](#)

Andries J. van Tonder, James E. Bray, Keith A. Jolley, Melissa Jansen van Rensburg, Sigríður J. Quirk, Gunnsteinn Haraldsson, Martin C. J. Maiden, Stephen D. Bentley, Ásgeir Haraldsson, Helga Erlendsdóttir, Karl G. Kristinsson, and Angela B. Brüeggemann

[Genomic Characteristics of *Desulfonema ishimotonii* Tokyo 01T Implying Horizontal Gene Transfer Among Phylogenetically Dispersed Filamentous Gliding Bacteria](#)

Miho Watanabe, Hisaya Kojima, Kazuhiro Umezawa, and Manabu Fukui

[Improving Cadmium Resistance in *Escherichia coli* Through Continuous Genome Evolution](#)

Weitong Qin, Jintong Zhao, Xiaoxia Yu, Xiaoqing Liu, Xiaoyu Chu, Jian Tian, and Ningfeng Wu

[Insights Into the Evolution of *Staphylococcus aureus* Daptomycin Resistance From an *in vitro* Bioreactor Model](#)



FRONTIERS IN MICROBIOLOGY (Continued)

Section "Systems Microbiology"

[A Developing Symbiosis: Enabling Cross-Talk Between Ecologists and Microbiome Scientists](#)

Laura Tipton, John L. Darcy, and Nicole A. Hynson

[Dynamic Change of Gut Microbiota During Porcine Epidemic Diarrhea Virus Infection in Suckling Piglets](#)

Anni Huang, Rujian Cai, Qun Wang, Lei Shi, Chunling Li, He Yan, and He Yan

[Fungal Community Ecology Using MALDI-TOF MS Demands Curated Mass Spectral Databases](#)

Matheus Sanitá Lima, Rosymar Coutinho de Lucas, Nelson Lima, Maria de Lourdes Teixeira de Moraes Polizeli, and Cledir Santos

[Global Microbiome Diversity Scaling in Hot Springs With DAR \(Diversity-Area Relationship\) Profiles](#)

Lianwei Li, and Zhanshan Ma

[Identification and Analysis of Human Microbe-Disease Associations by Matrix Decomposition and Label Propagation](#)

Jia Qu, Yan Zhao, and Jun Yin

[Metagenomic Approach to Characterizing Disease Epidemiology in a Disease-Endemic Environment in Northern Thailand](#)

Ratree Takhampunya, Achareeya Korkusol, Chalernpol Pongpichit, Komsan Yodin, Artharee Rungroj, Nitima Chanarat, Sommai Promsathaporn, Taweesak Monkanna, Sasikanya Thaloengsok, Bousaraporn Tippayachai, Naruemon Kumfao, Allen L. Richards, and Silas A. Davidson

[Nutritional Interventions Improved Rumen Functions and Promoted Compensatory Growth of Growth-Retarded Yaks as Revealed by Integrated Transcripts and Microbiome Analyses](#)

Rui Hu, Huawei Zou, Zhisheng Wang, Binghai Cao, Quanhui Peng, Xiaoping Jing, Yixin Wang, Yaqun Shao, Zhaoxi Pei, Xiangfei Zhang, Bai Xue, Lizhi Wang, Suonan Zhao, Yuqing Zhou, and Xiangying

Digital Repository Universitas Jember

- Erica Lasek-Nesselquist, Jackson Lu, Ryan Schneider, Zhuo Ma, Vincenzo Russo, Smruti Mishra, Manjunath P. Pai, Janice D. Pata, Kathleen A. McDonough, and Meenakshi Malik
[Whole Proteome Clustering of 2,307 Proteobacterial Genomes Reveals Conserved Proteins and Significant Annotation Issues](#)
Svetlana Lockwood, Kelly A. Brayton, Jeff A. Daily, and Shira L. Broshat
FRONTIERS IN MICROBIOLOGY
Section "Microbial Physiology and Metabolism"
[Anaerobic Degradation of Sulfated Polysaccharides by Two Novel Kiritimatiellales Strains Isolated From Black Sea Sediment](#)
Daan M. van Vliet, Susakul Palakawong Na Ayudthaya, Sally Diop, Laura Villanueva, Alfons J. M. Stams, and Irene Sánchez-Andrea
[Cell Wall Hydrolases in Bacteria: Insight on the Diversity of Cell Wall Amidases, Glycosidases and Peptidases Toward Peptidoglycan](#)
Aurore Vermassen, Sabine Leroy, Régine Talon, Christian Provot, Magdalena Popowska, and Mickaël Desvaux
[Engineering a Microbial Consortium Based Whole-Cell System for Efficient Production of Glutarate From L-Lysine](#)
Xin Wang, Rui Su, Kequan Chen, Sheng Xu, Jiao Feng, and Pingkai Ouyang
[Escherichia coli Uses Separate Enzymes to Produce H₂S and Reactive Sulfane Sulfur From L-cysteine](#)
Kai Li, Yufeng Xin, Guanhua Xuan, Rui Zhao, Huaiwei Liu, Yongzhen Xia, and Luying Xun
[Exploring Structural Diversity of Microbe Secondary Metabolites Using OSMAC Strategy: A Literature Review](#)
Rui Pan, Xuelian Bai, Jianwei Chen, Huawei Zhang, and Hong Wang
[Historical Factors Associated With Past Environments Influence the Biogeography of Thermophilic Endospores in Arctic Marine Sediments](#)
China A. Hanson, Albert L. Müller, Alexander Loy, Clelia Dona, Ramona Appel, Bo Barker Jørgensen, and Casey R. J. Hubert
[Micro- and Nanotopography Sensitive Bacterial Attachment Mechanisms: A Review](#)
Yifan Cheng, Guoping Feng, and Carmen I. Moraru
[Plant-Growth Promotion and Biocontrol Properties of Three Streptomyces spp. Isolates to Control Bacterial Rice Pathogens](#)
Zulma Rocío Suárez-Moreno, Diana Marcela Vinchira-Villarraga, Diana Isabel Vergara-Morales, Leonardo Castellanos, Freddy A. Ramos, Corrado Guarnaccia, Giuliano Degrassi, Vittorio Venturi, and Nubia Moreno-Sarmiento
[Porphyrin Excretion Resulting From Mutation of a Gene Encoding a Class I Fructose 1,6-Bisphosphate Aldolase in Rhodobacter capsulatus](#)
Hao Ding, Rafael G. Saer, and J. Thomas Beatty
[Single-Cell Approach to Monitor the Unfolded Protein Response During Biotechnological Processes With Pichia pastoris](#)
Hana Raschmanová, Iwo Zamora, Martina Borčinová, Patrick Meier, Astrid Weninger, Dominik Mächler, Anton Glieder, Karel Melzoch, Zdeněk Knejzlík, and Karin Kovar
Kong
[Saponin-Induced Shifts in the Rumen Microbiome and Metabolome of Young Cattle](#)
Bing Wang, Man Peng Ma, Qi Yu Diao, and Yan Tu
[Shaping the Infant Microbiome With Non-digestible Carbohydrates](#)
Stella Verkhnyatskaya, Michela Ferrari, Paul de Vos, and Marthe T. C. Walvoort
[Web-gLV: A Web Based Platform for Lotka-Volterra Based Modeling and Simulation of Microbial Populations](#)
Bhusan K. Kuntal, Chetan Gadgil, and Sharmila S. Mande
FRONTIERS IN MICROBIOLOGY
Section "Food Microbiology"
[\(Ultra\) High Pressure Homogenization Potential on the Shelf-Life and Functionality of Kiwifruit Juice](#)
Francesca Patrignani, Cinzia Mannozi, Silvia Tappi, Urszula Tylewicz, Federica Pasini, Vincenzo Castellone, Ylenia Riciputi, Pietro Rocculi, Santina Romani, Maria Fiorenza Caboni, Fausto Gardini, Rosalba Lanciotti, and Marco Dalla Rosa
[Fungal Species Diversity in French Bread Sourdoughs Made of Organic Wheat Flour](#)
Charlotte Urien, Judith Legrand, Pierre Montalent, Serge Casaregola, and Delphine Sicard
[Identification of Bacterial Composition in Freeze-Dried Agaricus bisporus During Storage and the Resultant Odor Deterioration](#)
Wenjian Yang, Liuqing Wang, Qiuhui Hu, Fei Pei, and Mariga Alfred Mugambi
[Lactobacillus casei Strain Shirota Alleviates Constipation in Adults by Increasing the Pipecolinic Acid Level in the Gut](#)
Yangwenshan Ou, Shanbin Chen, Fazheng Ren, Ming Zhang, Shaoyang Ge, Huiyuan Guo, Hao Zhang, and Liang Zhao
[Lactobacillus plantarum ZS2058 and Lactobacillus rhamnosus GG Use Different Mechanisms to Prevent Salmonella Infection in vivo](#)
Junsheng Liu, Zhennan Gu, Fanfen Song, Hao Zhang, Jianxin Zhao, and Wei Chen
[Prevalence and Characterization of Food-Related Methicillin-Resistant Staphylococcus aureus \(MRSA\) in China](#)
Shi Wu, Jiahui Huang, Feng Zhang, Qingping Wu, Jumei Zhang, Rui Pang, Haiyan Zeng, Xiaojuan Yang, Moutong Chen, Juan Wang, Jingsha Dai, Liang Xue, Tao Lei, and Xianhu Wei
[Prevalence, Antibiotic Susceptibility, and Molecular Characterization of Cronobacter spp. Isolated From Edible Mushrooms in China](#)
Chengsi Li, Haiyan Zeng, Jumei Zhang, Wenjing He, Na Ling, Moutong Chen, Shi Wu, Tao Lei, Haoming Wu, Yingwang Ye, Yu Ding, Juan Wang, Xianhu Wei, Youxiong Zhang, and Qingping Wu
[Probiotic Properties of Enterococcus Isolated From Artisanal Dairy Products](#)
Yousef Nami, Reza Vaseghi Bakhshayesh, Hossein Mohammadzadeh Jalaly, Hajie Lotfi, Solat Eslami, and Mohammad Amin Hejazi
[Proteomic Analysis of Lactobacillus nagelii in the Presence of Saccharomyces cerevisiae Isolated From Water Kefir and Comparison With Lactobacillus hordei](#)

Digital Repository Universitas Jember

- [Substantial Extracellular Metabolic Differences Found Between Phylogenetically Closely Related Probiotic and Pathogenic Strains of *Escherichia coli*](#)
Justin J. J. van der Hooff, Robert J. Goldstone, Susan Harris, Karl E. V. Burgess, and David G. E. Smith
- [Whole Cell Actinobacteria as Biocatalysts](#)
Yitayal Shiferaw Anteneh, and Christopher Milton Mathew Franco
- FRONTIERS IN MICROBIOLOGY
Section "Microbiological Chemistry and Geomicrobiology"
- [Insights Into the Mineralogy and Surface Chemistry of Extracellular Biogenic S₀ Globules Produced by *Chlorobaculum tepidum*](#)
Cassandra L. Marnocha, Chandran R. Sabanayagam, Shannon Modla, Deborah H. Powell, Pauline A. Henri, Andrew S. Steele, Thomas E. Hanson, Samuel M. Webb, and Clara S. Chan
- FRONTIERS IN MICROBIOLOGY
Section "Virology"
- [Colanic Acid Is a Novel Phage Receptor of *Pectobacterium carotovorum* subsp. *carotovorum* Phage POP72](#)
Hyeongsun Kim, Minsik Kim, Jaewoo Bai, Jeong-A Lim, Sunggi Heu, and Sangryeol Ryu
- [Diagnostic Parameters of Adenoviremia in Pediatric Stem Cell Transplant Recipients](#)
Karin Kosulin, Herbert Pichler, Anita Lawitschka, René Geyeregger, and Thomas Lion
- [Exploring Evolutionary and Transmission Dynamics of HIV Epidemic in Serbia: Bridging Socio-Demographic With Phylogenetic Approach](#)
Luka Jovanović, Marina Šiljić, Valentina Ćirković, Dubravka Salemović, Ivana Pešić-Pavlović, Marija Todorović, Jovan Ranin, Djordje Jevtović, and Maja Stanojević
- [Host Lipids in Positive-Strand RNA Virus Genome Replication](#)
Zhenlu Zhang, Guijuan He, Natalie A. Filipowicz, Glenn Randall, George A. Belov, Benjamin G. Kopek, and Xiaofeng Wang
- [Human Immunodeficiency Virus-1 Diversity in the Moscow Region, Russia: Phylodynamics of the Most Common Subtypes](#)
Aleksey Lebedev, Natalya Lebedeva, Fedor Moskaleychik, Alexander Pronin, Elena Kazennova, and Marina Bobkova
- [Inhibition of Influenza A Virus Replication by TRIM14 via Its Multifaceted Protein-Protein Interaction With NP](#)
Xiangwei Wu, Jingfeng Wang, Shanshan Wang, Fei Wu, Zhigao Chen, Chunfeng Li, Genhong Cheng, and F. Xiao-Feng Qin
- [Interactions Between Enteroviruses and the Inflammasome: New Insights Into Viral Pathogenesis](#)
Xia Xiao, Jianli Qi, Xiaobo Lei, and Jianwei Wang
- [Isolation and Genomic Characterization of an *Acinetobacter johnsonii* Bacteriophage AJ02 From Bulking Activated Sludge](#)
Niansi Fan, Min Yang, Rencun Jin, and Rong Qi
- [Molecular and Biological Characterization of *Ralstonia* Phage RsoM1USA, a New Species of P2virus, Isolated in the United States](#)
Julia Bechtner, Di Xu, Jürgen Behr, Christina Ludwig, and Rudi F. Vogel
- [Salmonella and Enterohemorrhagic *Escherichia coli* Serogroups O45, O121, O145 in Wheat Flour: Effects of Long-Term Storage and Thermal Treatments](#)
Fereidoun Forghani, Meghan den Bakker, Jye-Yin Liao, Alison S. Payton, Alexandra N. Futral, and Francisco Diez-Gonzalez
- [Survival and Environmental Stress Resistance of *Cronobacter sakazakii* Exposed to Vacuum or Air Packaging and Stored at Different Temperatures](#)
Yichen Bai, Haibo Yu, Du Guo, Shengyi Fei, and Chao Shi
- [The Use of a DNA-Intercalating Dye for Quantitative Detection of Viable *Arcobacter* spp. Cells \(v-qPCR\) in Shellfish](#)
Nuria Salas-Massó, Quyen Than Linh, Wai Hoe Chin, Anders Wolff, Karl B. Andree, M. Dolores Furones, María José Figueras, and Dang Duong Bang
- FRONTIERS IN MICROBIOLOGY
Section "Microbiotechnology, Ecotoxicology and Bioremediation"
- [Anaerobic Bacterial Immobilization and Removal of Toxic Sb\(III\) Coupled With Fe\(II\)/Sb\(III\) Oxidation and Denitrification](#)
Jingxin Li, Yuxiao Zhang, Shiling Zheng, Fanghua Liu, and Gejiao Wang
- [Changes in Bacterioplankton Communities Resulting From Direct and Indirect Interactions With Trace Metal Gradients in an Urbanized Marine Coastal Area](#)
Clément Coclet, Cédric Garnier, Gaël Durrieu, Dario Omanović, Sébastien D'Onofrio, Christophe Le Poupon, Jean-Ulrich Mullot, Jean-François Briand, and Benjamin Misson
- [Effect of Lactate on the Microbial Community and Process Performance of an EBPR System](#)
Francisco J. Rubio-Rincón, Laurens Welles, Carlos M. Lopez-Vazquez, Ben Abbas, Mark C. M. van Loosdrecht, and Damir Brdjanovic
- [Function of L-Pipecolic Acid as Compatible Solute in *Corynebacterium glutamicum* as Basis for Its Production Under Hyperosmolar Conditions](#)
Fernando Pérez-García, Luciana F. Brito, and Volker F. Wendisch
- [*Lentinula edodes* Mycelium as Effective Agent for Piroxicam Mycoremediation](#)
Bożena Muszyńska, Monika Dąbrowska, Małgorzata Starek, Paweł Żmudzki, Jan Lazur, Jolanta Pytko-Polończyk, and Włodzimierz Opoka
- [Metabolic Engineering of *Bacillus subtilis* Toward Taxadiene Biosynthesis as the First Committed Step for Taxol Production](#)
Ingy I. Abdallah, Hegar Pramastya, Ronald van Merkerk, Sukrasno Sukrasno, and Wim J. Quax
- [Overview of the Antimicrobial Compounds Produced by Members of the *Bacillus subtilis* Group](#)
Simon Caulier, Catherine Nannan, Annika Gillis, Florent Licciardi, Claude Bragard, and Jacques Mahillon
- [Recombinant Expression of *Serratia marcescens* Outer Membrane Phospholipase A \(A1\) in *Pichia pastoris* and Immobilization With Graphene Oxide-](#)

Digital Repository Universitas Jember

- Hardian Susilo Addy, Abdelmonim Ali Ahmad, and Qi Huang
[Natural Hosts and Genetic Diversity of the Emerging Tomato Leaf Curl New Delhi Virus in Spain](#)
Miguel Juárez, María Pilar Rabadán, Luis Díaz Martínez, Monia Tayahi, Ana Grande-Pérez, and Pedro Gómez
[Rapid Sequencing of Multiple RNA Viruses in Their Native Form](#)
Thidathip Wongsurawat, Piroon Jenjaroenpun, Mariah K. Taylor, Jasper Lee, Aline Lavado Tolardo, Jyothi Parvathareddy, Sangam Kandel, Taylor D. Wadley, Bualan Kaewnapan, Niracha Athipanyasilp, Andrew Skidmore, Donghoon Chung, Chutikarn Chaimayo, Michael Whitt, Wannee Kantakamalakul, Ruengpung Sutthent, Navin Horthongkham, David W. Ussery, Colleen B. Jonsson, and Intawat Nookaew
[The Association Between Documentation of Koplik Spots and Laboratory Diagnosis of Measles and Other Rash Diseases in a National Measles Surveillance Program in Japan](#)
Hirokazu Kimura, Komei Shirabe, Makoto Takeda, Miho Kobayashi, Hiroyuki Tsukagoshi, Kaori Okayama, Akihide Ryo, Koo Nagasawa, Nobuhiko Okabe, Hiroko Minagawa, and Kunihisa Kozawa
FRONTIERS IN MICROBIOLOGY
Section "Fungi and Their Interactions"
[A Major Facilitator Superfamily Peptide Transporter From *Fusarium oxysporum* Influences Bioethanol Production From Lignocellulosic Material](#)
Brian Nugent, Shahin S. Ali, Ewen Mullins, and Fiona M. Doohan
[Hexokinase and Glucokinases Are Essential for Fitness and Virulence in the Pathogenic Yeast *Candida albicans*](#)
Romain Laurian, Karine Dementhon, Bastien Doumèche, Alexandre Soulard, Thierry Noel, Marc Lemaire, and Pascale Cotton
[How Does *Fusarium oxysporum* Sense and Respond to Nicotinaldehyde, an Inhibitor of the NAD⁺ Salvage Biosynthesis Pathway?](#)
Gautam Anand, Daniel Waiger, Nuria Vital, Jacob Maman, Li Jun Ma, and Shay Covo
[Mapping the Fungal Battlefield: Using in situ Chemistry and Deletion Mutants to Monitor Interspecific Chemical Interactions Between Fungi](#)
Sonja L. Knowles, Huzefa A. Raja, Allison J. Wright, Ann Marie L. Lee, Lindsay K. Caesar, Nadja B. Cech, Matthew E. Mead, Jacob L. Steenwyk, Laure N. A. Ries, Gustavo H. Goldman, Antonis Rokas, and Nicholas H. Oberlies
[Ploidy Determination in the Pathogenic Fungus *Sporothrix* spp.](#)
Beatriz H. Ferreira, Jorge H. Ramírez-Prado, Gabriela W. P. Neves, Egidio Torrado, Paula Sampaio, Maria Sueli S. Felipe, Ana Tereza Vasconcelos, Gustavo H. Goldman, Agostinho Carvalho, Cristina Cunha, Leila M. Lopes-Bezerra, and Fernando Rodrigues
[The Sensor Proteins BcSho1 and BcSin1 Are Involved in, Though Not Essential to, Vegetative Differentiation, Pathogenicity and Osmotic Stress Tolerance in *Botrytis cinerea*](#)
[Based Fe₃O₄ Nanoparticles for Rapeseed Oil Degumming](#)
Peizhou Yang, Suwei Jiang, Yun Wu, Zhigang Hou, Zhi Zheng, Lili Cao, Mingrui Du, and Shaotong Jiang
FRONTIERS IN MICROBIOLOGY
Section "Extreme Microbiology"
[Bacillus subtilis Spore Resistance to Simulated Mars Surface Conditions](#)
Marta Cortesão, Felix M. Fuchs, Fabian M. Commichau, Patrick Eichenberger, Andrew C. Schuerger, Wayne L. Nicholson, Peter Setlow, and Ralf Moeller
[Genomic Insights of Halophilic *Planococcus maritimus* SAMP MCC 3013 and Detail Investigation of Its Biosurfactant Production](#)
Samadhan Waghmode, Mangesh Suryavanshi, Laxmikant Dama, Shraddha Kansara, Vikas Ghattargi, Parijat Das, Arun Banpurkar, and Surekha K. Satpute
[Methods to Investigate the Global Atmospheric Microbiome](#)
Aurelien Dommergue, Pierre Amato, Romie Tignat-Perrier, Olivier Magand, Alban Thollot, Muriel Joly, Laetitia Bouvier, Karine Sellegri, Timothy Vogel, Jeroen E. Sonke, Jean-Luc Jaffrezo, Marcos Andrade, Isabel Moreno, Casper Labuschagne, Lynwill Martin, Qianggong Zhang, and Catherine Larose
[Subsurface Microbial Habitats in an Extreme Desert Mars-Analog Environment](#)
Kimberley A. Warren-Rhodes, Kevin C. Lee, Stephen D. J. Archer, Nathalie Cabrol, Linda Ng-Boyle, David Wettergreen, Kris Zacny, and Stephen B. Pointing
FRONTIERS IN MICROBIOLOGY
Section "Microbial Symbioses"
[Bacterial Community Diversity Associated With Different Utilization Efficiencies of Nitrogen in the Gastrointestinal Tract of Goats](#)
Lizhi Wang, Kaizhen Liu, Zhisheng Wang, Xue Bai, Quanhui Peng, and Lei Jin
[Successional Dynamics and Seascape-Level Patterns of Microbial Communities on the Canopy-Forming Kelps *Nereocystis luetkeana* and *Macrocystis pyrifera*](#)
Brooke L. Weigel, and Catherine A. Pfister
FRONTIERS IN MICROBIOLOGY
Section "Aquatic Microbiology"
[Drivers of Regional Bacterial Community Structure and Diversity in the Northwest Atlantic Ocean](#)
Jackie Zorz, Ciara Willis, André M. Comeau, Morgan G. I. Langille, Catherine L. Johnson, William K. W. Li, and Julie LaRoche
[Resting Cyst Distribution and Molecular Identification of the Harmful Dinoflagellate *Margalefidinium polykrikoides* \(Gymnodiniales, Dinophyceae\) in Lampung Bay, Sumatra, Indonesia](#)
Hikmah Thoha, Muawanah Muawanah, Mariana D. Bayu Intan, Arief Rachman, Oksto Ridho Sianturi, Tumpak Sidabutar, Mitsunori Iwataki, Kazuya Takahashi, Jean-Christophe Avarre, and Estelle Masseret
[Seasonality of Planktonic Freshwater Ciliates: Are Analyses Based on V9 Regions of the 18S rRNA Gene Correlated With Morphospecies Counts?](#)

Weichao Ren, Na Liu, Yalan Yang, Qianqian Yang, Changjun Chen, and Qingli Gao
FRONTIERS IN MICROBIOLOGY
Section "Antimicrobials, Resistance and Chemotherapy"

[Analytical Investigation of Cymbopogon citratus and Exploiting the Potential of Developed Silver Nanoparticle Against the Dominating Species of Pathogenic Bacteria](#)

Priyanka Basera, Meeta Lavania, Anil Agnihotri, and Banwari Lal

[Antimicrobial Activity of Agastache Honey and Characterization of Its Bioactive Compounds in Comparison With Important Commercial Honeys](#)

Sushil Anand, Margaret Deighton, George Livanos, Paul D. Morrison, Edwin C. K. Pang, and Nitin Mantri

[Antimicrobial Activity of \$\alpha\$ -Peptide/ \$\beta\$ -Peptoid Lysine-Based Peptidomimetics Against Colistin-Resistant Pseudomonas aeruginosa Isolated From Cystic Fibrosis Patients](#)

Natalia Molchanova, Hengzhuang Wang, Paul R. Hansen, Niels Høiby, Hanne M. Nielsen, and Henrik Franzyk

[Deprivation of the Periplasmic Chaperone SurA Reduces Virulence and Restores Antibiotic Susceptibility of Multidrug-Resistant Pseudomonas aeruginosa](#)

Kristina Klein, Michael S. Sonnabend, Lisa Frank, Karolin Leibiger, Mirita Franz-Wachtel, Boris Macek, Thomas Trunk, Jack C. Leo, Ingo B. Autenrieth, Monika Schütz, and Erwin Bohn

[Essential Oil, Extracts, and Sesquiterpenes Obtained From the Heartwood of Pilgerodendron uviferum Act as Potential Inhibitors of the Staphylococcus aureus NorA Multidrug Efflux Pump](#)

Javier Espinoza, Alejandro Urzúa, Loreto Sanhueza, Mariana Walter, Paola Fincheira, Patricia Muñoz, Leonora Mendoza, and Marcela Wilkens

[Extended Spectrum Beta-Lactamase-Producing Gram-Negative Bacteria Recovered From an Amazonian Lake Near the City of Belém, Brazil](#)

Dhara Y. Freitas, Susana Araújo, Adriana R. C. Folador, Rommel T. J. Ramos, Juliana S. N. Azevedo, Marta Tacão, Artur Silva, Isabel Henriques, and Rafael A. Baraúna

[Genetic Characterization of a blaVIM-24-Carrying IncP-7 \$\beta\$ Plasmid p1160-VIM and a blaVIM-4-Harboring Integrative and Conjugative Element Tn6413 From Clinical Pseudomonas aeruginosa](#)

Lijun Zeng, Zhe Zhan, Lingfei Hu, Xiaoyuan Jiang, Yanjun Zhang, Jiao Feng, Bo Gao, Yuee Zhao, Wenhui Yang, Huiying Yang, Zhe Yin, and Dongsheng Zhou

[Genome-Wide Transcriptional Responses of Mycobacterium to Antibiotics](#)

Julien Briffotiaux, Shengyuan Liu, and Brigitte Gicquel
[ICESsuHN105, a Novel Multiple Antibiotic Resistant ICE in Streptococcus suis Serotype 5 Strain HN105](#)

Yinchu Zhu, Yue Zhang, Jiale Ma, Wenyang Dong, Xiaojun Zhong, Zihao Pan, and Huochun Yao

[Isothermal Microcalorimetry Detects the Presence of Persister Cells in a Staphylococcus aureus Biofilm After Vancomycin Treatment](#)

Gianna Pitsch, Estelle Patricia Bruni, Dominik Forster, Zhishuai Qu, Bettina Sonntag, Thorsten Stoeck, and Thomas Posch

FRONTIERS IN MICROBIOLOGY
Section "Terrestrial Microbiology"

[Rapid Transfer of Plant Photosynthates to Soil Bacteria via Ectomycorrhizal Hyphae and Its Interaction With Nitrogen Availability](#)

Stefan Gorka, Marlies Dietrich, Werner Mayerhofer, Raphael Gabriel, Julia Wiesenbauer, Victoria Martin, Qing Zheng, Bruna Imai, Judith Prommer, Marieluise Weidinger, Peter Schweiger, Stephanie A. Eichorst, Michael Wagner, Andreas Richter, Arno Schintlmeister, Dagmar Woebken, and Christina Kaiser

[Soil Macroinvertebrate Presence Alters Microbial Community Composition and Activity in the Rhizosphere](#)

Natalie Bray, Jenny Kao-Kniffin, Serita D. Frey, Timothy Fahey, and Kyle Wickings

FRONTIERS IN MICROBIOLOGY
Section "Microbial Immunology"

[Crucial Role of Microbiota in Experimental Psoriasis Revealed by a Gnotobiotic Mouse Model](#)

Zuzana Stehlikova, Klara Kostovcikova, Miloslav Kverka, Pavel Rossmann, Jiri Dvorak, Iva Novosadova, Martin Kostovcik, Stepan Coufal,

Dagmar Srutkova, Petra Prochazkova, Tomas Hudcovic, Hana Kozakova, Renata Stepankova, Filip Rob, Katerina Juzlova, Jana Hercogova, Helena Tlaskalova-Hogenova, and Zuzana Jiraskova Zakostelska

[Peptidoglycan Recognition Protein 2 Regulates Neutrophil Recruitment Into the Lungs After Streptococcus pneumoniae Infection](#)

Alexander N. Dabrowski, Claudia Conrad, Ulrike Behrendt, Anshu Shrivastav, Nelli Baal, Sandra M. Wienhold, Holger Hackstein, Philippe D. N'Guessan, Sahar Aly, Katrin Reppe, Norbert Suttorp, and Janine Zahlten

[TLR4 May Be Involved in the Regulation of Colonic Mucosal Microbiota by Vitamin A](#)

Lu Xiao, Baolin Chen, Di Feng, Ting Yang, Tingyu Li, and Jie Chen

FRONTIERS IN MICROBIOLOGY
Section "Plant Microbe Interactions"

[Combined Metabarcoding and Co-occurrence Network Analysis to Profile the Bacterial, Fungal and Fusarium Communities and Their Interactions in Maize Stalks](#)

José Francisco Cobo-Díaz, Riccardo Baroncelli, Gaétan Le Floch, and Adeline Picot

[Effects of Afforestation Restoration on Soil Potential N₂O Emission and Denitrifying Bacteria After Farmland Abandonment in the Chinese Loess Plateau](#)

Na Deng, Honglei Wang, Shu Hu, and Juying Jiao
[Factors Influencing Leaf- and Root-Associated Communities of Bacteria and Fungi Across 33 Plant Orders in a Grassland](#)

Hirokazu Toju, Hiroko Kurokawa, and Tanaka Kenta
[Inference of Convergent Gene Acquisition Among Pseudomonas syringae Strains Isolated From Watermelon, Cantaloupe, and Squash](#)

Digital Repository Universitas Jember

- Maria Eugenia Butini, Gerardo Abbandonato, Carmine Di Rienzo, Andrej Trampuz, and Mariagrazia Di Luca
[Lactobacillus gasseri APC 678 Reduces Shedding of the Pathogen Clostridium difficile in a Murine Model](#)
Lisa Quigley, Mairéad Coakley, Debebe Alemayehu, Mary C. Rea, Patrick G. Casey, Órla O'Sullivan, Eileen Murphy, Barry Kiely, Paul D. Cotter, Colin Hill, and R. Paul Ross
[Metagenomic and Resistome Analysis of a Full-Scale Municipal Wastewater Treatment Plant in Singapore Containing Membrane Bioreactors](#)
Charmaine Ng, Boonfei Tan, Xiao-Tao Jiang, Xiaoqiong Gu, Hongjie Chen, Bradley William Schmitz, Laurence Haller, Francis Rathinam Charles, Tong Zhang, and Karina Gin
[MexXY Multidrug Efflux System Is More Frequently Overexpressed in Ciprofloxacin Resistant French Clinical Isolates Compared to Hospital Environment Ones](#)
Cristiano Serra, Bakhta Bouharkat, Aicha Tir Touil-Meddah, Stéphanie Guénin, and Catherine Mullié
[Mutations in Efflux Pump Rv1258c \(Tap\) Cause Resistance to Pyrazinamide, Isoniazid, and Streptomycin in M. tuberculosis](#)
Jiayun Liu, Wanliang Shi, Shuo Zhang, Xiaoke Hao, Dmitry A. Maslov, Kirill V. Shur, Olga B. Bekker, Valery N. Danilenko, and Ying Zhang
[Nanocomposite of Ag-Doped ZnO and AgO Nanocrystals as a Preventive Measure to Control Biofilm Formation in Eggshell and Salmonella spp. Entry Into Eggs](#)
Belchiolina Beatriz Fonseca, Paula Luiza Alves Pereira Andrada Silva, Anielle Christine Almeida Silva, Noelio Oliveira Dantas, Aline Teodoro de Paula, Otavio Cintra Lemos Olivieri, Marcelo Emilio Beletti, Daise Aparecida Rossi, and Luiz Ricardo Goulart
[Nasal Resistome Development in Infants With Cystic Fibrosis in the First Year of Life](#)
Aurélie Allemann, Julia G. Kraemer, Insa Korten, Kathryn Ramsey, Carmen Casaulta, on Behalf of SCILD Study Group Ramette, Daniel Wüthrich, Alban Ramette, Andrea Endimiani, Philipp Latzin, and Markus Hilty
[Optimization and Characterization of a Galleria mellonella Larval Infection Model for Virulence Studies and the Evaluation of Therapeutics Against Streptococcus pneumoniae](#)
Freya Cools, Eveline Torfs, Juliana Aizawa, Bieke Vanhoutte, Louis Maes, Guy Caljon, Peter Delputte, Davie Cappoen, and Paul Cos
[Plasmid-Mediated Transmission of KPC-2 Carbapenemase in Enterobacteriaceae in Critically Ill Patients](#)
Christian Schweizer, Peter Bischoff, Jennifer Bender, Axel Kola, Petra Gastmeier, Manfred Hummel, Frank-Rainer Klefisch, Felix Schoenrath, Andre Frühauf, and Yvonne Pfeifer
[Proteomic Analysis of Resistance of Gram-Negative Bacteria to Chlorhexidine and Impacts on Susceptibility to Colistin, Antimicrobial Peptides, and Ceragenins](#)
Eric A. Newberry, Mohamed Ebrahim, Sujan Timilsina, Nevena Zlatković, Aleksa Obradović, Carolee T. Bull, Erica M. Goss, Jose C. Huguet-Tapia, Mathews L. Paret, Jeffrey B. Jones, and Neha Potnis
[Long-Term Organic Farming Manipulated Rhizospheric Microbiome and Bacillus Antagonism Against Pepper Blight \(Phytophthora capsici\)](#)
Huixiu Li, Xiaoxu Cai, Jingyang Gong, Ting Xu, Guochun Ding, and Ji Li
[Sunagoke Moss \(Racomitrium japonicum\) Used for Greening Roofs Is Severely Damaged by Sclerotium delphinii and Protected by a Putative Bacillus amyloliquefaciens Isolate](#)
Mako Tamura, Minatsu Tanabe, Jari P. T. Valkonen, and Motomu Akita
[The Compound 2-Hexyl, 5-Propyl Resorcinol Has a Key Role in Biofilm Formation by the Biocontrol Rhizobacterium Pseudomonas chlororaphis PCL1606](#)
Claudia E. Calderón, Sandra Tienda, Zaira Heredia-Ponce, Eva Arrebola, Gerardo Cárcamo-Oyarce, Leo Eberl, and Francisco M. Cazorla
[The Ectomycorrhizospheric Habitat of Norway Spruce and Tricholoma vaccinum: Promotion of Plant Growth and Fitness by a Rich Microorganismic Community](#)
Katharina Wagner, Katrin Krause, Ramses Gallegos-Monterrosa, Dominik Sammer, Ákos T. Kovács, and Erika Kothe
[Widespread Distribution of Highly Adapted Bradyrhizobium Species Nodulating Diverse Legumes in Africa](#)
Sanjay K. Jaiswal, and Felix D. Dakora
FRONTIERS IN MICROBIOLOGY
Section "Infectious Diseases"
[Cryptococcal Meningitis and Anti-virulence Therapeutic Strategies](#)
Kiem Vu, Javier A. Garcia, and Angie Gelli
[Differential View on the Bile Acid Stress Response of Clostridioides difficile](#)
Susanne Sievers, Nicole G. Metzendorf, Silvia Dittmann, Daniel Troitzsch, Viola Gast, Sophie Marlen Tröger, Christian Wolff, Daniela Zühlke, Claudia Hirschfeld, Rabea Schlüter, and Katharina Riedel
[Distinct Contribution of the HtrA Protease and PDZ Domains to Its Function in Stress Resilience and Virulence of Bacillus anthracis](#)
Ma'ayan Israeli, Uri Elia, Shahar Rotem, Hila Cohen, Avital Tidhar, Adi Bercovich-Kinori, Ofer Cohen, and Theodor Chitlaru
[Genetic and Phenotypic Features to Screen for Putative Adherent-Invasive Escherichia coli](#)
Carla Camprubi-Font, Christa Ewers, Mireia Lopez-Siles, and Margarita Martinez-Medina
[Group A Streptococcus Subcutaneous Infection-Induced Central Nervous System Inflammation Is Attenuated by Blocking Peripheral TNF](#)
Ya-Hui Liu, Pei-Hua Wu, Chih-Cheng Kang, Yau-Sheng Tsai, Chuan-Kai Chou, Chung-Tiang Liang, Jiunn-Jong Wu, and Pei-Jane Tsai
[In vitro Evaluation of BACT/ALERT® VIRTUO®, BACT/ALERT 3D®, and BACTEC™ FX Automated Blood Culture Systems for Detection of Microbial](#)

Digital Repository Universitas Jember

Marjan M. Hashemi, Brett S. Holden, Jordan Coburn, Maddison F. Taylor, Scott Weber, Brian Hilton, Aaron L. Zaugg, Colten McEwan, Richard Carson, Joshua L. Andersen, John C. Price, Shenglou Deng, and Paul B. Savage

[Redirecting an Anticancer to an Antibacterial Hit Against Methicillin-Resistant Staphylococcus aureus](#)
Hye-Jeong Jang, In-Young Chung, Changjin Lim, Sungkyun Chung, Bi-o Kim, Eun Sook Kim, Seok-Ho Kim, and You-Hee Cho

[Seasonal Occurrence and Carbapenem Susceptibility of Bovine Acinetobacter baumannii in Germany](#)

Peter Klotz, Paul G. Higgins, Andreas R. Schaubmar, Klaus Failing, Ursula Leidner, Harald Seifert, Sandra Scheufen, Torsten Semmler, and Christa Ewers

[The Antimicrobials Anacardic Acid and Curcumin Are Not-Competitive Inhibitors of Gram-Positive Bacterial Pathogenic Glyceraldehyde-3-Phosphate Dehydrogenase by a Mechanism Unrelated to Human C5a Anaphylatoxin Binding](#)

Sara Gómez, Javier Querol-García, Gara Sánchez-Barrón, Marta Subias, Àlex González-Alsina, Virginia Franco-Hidalgo, Sebastián Albertí, Santiago Rodríguez de Córdoba, Francisco J. Fernández, and M. Cristina Vega

[Whole Genome Sequencing of Mycobacterium tuberculosis Clinical Isolates From India Reveals Genetic Heterogeneity and Region-Specific Variations That Might Affect Drug Susceptibility](#)

Jayshree Advani, Renu Verma, Oishi Chatterjee, Praveen Kumar Pachouri, Prashant Upadhyay, Rajesh Singh, Jitendra Yadav, Farah Naaz, Raju Ravikumar, Shashidhar Buggi, Mrutyunjay Suar, Umesh D. Gupta, Akhilesh Pandey, Devendra S. Chauhan, Srikanth Prasad Tripathy, Harsha Gowda, and T. S. Keshava Prasad

FRONTIERS IN MICROBIOLOGY

Section "Systems Microbiology"

[A Comparison of Microbial Genome Web Portals](#)

Peter D. Karp, Natalia Ivanova, Markus Krummenacker, Nikos Kyrpides, Mario Latendresse, Peter Midford, Wai Kit Ong, Suzanne Paley, and Rekha Seshadri

[Pathogens Using Simulated Human Blood Samples](#)
Giulia Menchinelli, Flora Marzia Liotti, Barbara Fiori, Giulia De Angelis, Tiziana D'Inzeo, Liliana Giordano, Brunella Posteraro, Michela Sabatucci, Maurizio Sanguinetti, and Teresa Spanu

[Local Diversification of Methicillin-Resistant Staphylococcus aureus ST239 in South America After Its Rapid Worldwide Dissemination](#)

Ana Maria Nunes Botelho, Maiana Oliveira Cerqueira e Costa, Ahmed M. Moustafa, Cristiana Ossaille Beltrame, Fabienne Antunes Ferreira, Marina Farrel Côrtes, Bruno Souza Scramignon Costa, Deborah Nascimento Santos Silva, Paula Terra Bandeira, Nicholas Costa Barroso Lima, Rangel Celso Souza, Luiz Gonzaga Paula de Almeida, Ana Tereza Ribeiro Vasconcelos, Apurva Narechania, Chanelle Ryan, Kelsey O'Brien, Sergios-Orestis Kolokotronis, Paul J. Planet, Marisa Fabiana Nicolás, and Agnes Marie Sá Figueiredo

[Molecular Characteristics and Antimicrobial Resistance of Group B Streptococcus Strains Causing Invasive Disease in Neonates and Adults](#)

Ming-Hong Tsai, Jen-Fu Hsu, Mei-Yin Lai, Lee-Chung Lin, Shih-Ming Chu, Hsuan-Rong Huang, Ming-Chou Chiang, Ren-Huei Fu, and Jang-Jih Lu

[Studying Biofilm and Clinical Issues in Orthopedics](#)
Trisha N. Peel

[Targeting the Hexosamine Biosynthetic Pathway Prevents Plasmodium Developmental Cycle and Disease Pathology in Vertebrate Host](#)
Pollyanna Stephanie Gomes, Scott Tanghe, Julio Gallego-Delgado, Luciana Conde, Leonardo Freire-de-Lima, Ana Carolina Lima, Célio Geraldo Freire-de-Lima, Josué da Costa Lima Junior, Otacilio Moreira, Paulo Totino, Ana Rodriguez, Adriane Regina Todeschini, and Alexandre Morrot

[The Selection of a Hepatocyte Cell Line Susceptible to Plasmodium falciparum Sporozoite Invasion That Is Associated With Expression of Glypican-3](#)

Rebecca E. Tweedell, Dingyin Tao, Timothy Hamerly, Tanisha M. Robinson, Simon Larsen, Alexander G. B. Grønning, Alessandra M. Norris, Jonas G. King, Henry Chun Hin Law, Jan Baumbach, Elke S. Bergmann-Leitner, and Rhoel R. Dinglasan



Suggest a Research Topic

Want to win \$100,000
to host your own
international scientific
conference?

© 2007-2018 Frontiers Media. S.A. All Rights Reserved

Frontiers - Avenue du Tribunal-Fédéral 34 1005 Lausanne Vaud Switzerland





Molecular and Biological Characterization of *Ralstonia* Phage RsoM1USA, a New Species of *P2virus*, Isolated in the United States

Hardian Susilo Addy^{1,2}, Abdelmonim Ali Ahmad^{1,3} and Qi Huang^{1*}

¹ Floral and Nursery Plants Research Unit, United States National Arboretum, United States Department of Agriculture–Agricultural Research Service, Beltsville, MD, United States, ² Department of Plant Protection, Faculty of Agriculture, University of Jember, Jember, Indonesia, ³ Department of Plant Pathology, Faculty of Agriculture, Minia University, El-minia, Egypt

The first *Ralstonia*-infecting bacteriophage from soil of the United States, designated RsoM1USA, was isolated from a tomato field in Florida. Electron microscopy revealed that phage RsoM1USA is member of the genus *P2virus* in the family *Myoviridae* with an icosahedral head of about 66 nm in diameter, a contractile tail of about 152 nm in length, and a long “neck.” Phage RsoM1USA infected 12 of the 30 tested *R. solanacearum* species complex strains collected worldwide in each of the three *Ralstonia* species: *R. solanacearum*, *R. pseudosolanacearum*, and *R. syzygii*. The phage completed its infection cycle 180 min post infection with a burst size of about 56 particles per cell. Phage RsoM1USA has a genome of 39,309 nucleotides containing 58 open reading frames (ORFs) and is closely related to *Ralstonia* phage RSA1 of the species *Ralstonia virus RSA1*. The genomic organization of phage RsoM1USA is also similar to that of phage RSA1, but their integrases share no sequence homology. In addition, we determined that the integration of phage RsoM1USA into its susceptible *R. solanacearum* strain K60 is mediated by the 3' 45-base portion of the threonine tRNA (TGT), not arginine tRNA (CCG) as reported for phage RSA1, confirming that the two phages use different mechanism for integration. Our proteomic analysis of the purified virions supported the annotation of the main structural proteins. Infection of a susceptible *R. solanacearum* strain RUN302 by phage RsoM1USA resulted in significantly reduced growth of the infected bacterium *in vitro*, but not virulence in tomato plants, as compared to its uninfected RUN302 strain. Due to its differences from phage RSA1, phage RsoM1USA should be considered the type member of a new species with a proposed species name of *Ralstonia virus RsoM1USA*.

Keywords: *Ralstonia solanacearum*, *Ralstonia* phage, isolation, characterization, *P2virus*, *Myoviridae*

INTRODUCTION

Bacterial wilt caused by *Ralstonia solanacearum* is one of the most destructive plant diseases in the world. The bacterium is known to infect more than 50 families of plants in tropical, subtropical, and warm temperate regions of the world (Hayward, 1991). *R. solanacearum* is considered a species complex because it contains strains with great genetic variability. It is traditionally

OPEN ACCESS

Edited by:

Ramy Karam Aziz,
Cairo University, Egypt

Reviewed by:

Jessica Sacher,
University of Alberta, Canada
Hany Anany,
Agriculture and Agri-Food Canada
(AAFC), Canada

*Correspondence:

Qi Huang
qi.huang@ars.usda.gov

Specialty section:

This article was submitted to
Virology,
a section of the journal
Frontiers in Microbiology

Received: 05 October 2018

Accepted: 01 February 2019

Published: 19 February 2019

Citation:

Addy HS, Ahmad AA and
Huang Q (2019) Molecular
and Biological Characterization
of *Ralstonia* Phage RsoM1USA,
a New Species of *P2virus*, Isolated in
the United States.
Front. Microbiol. 10:267.
doi: 10.3389/fmicb.2019.00267

classified into five races based on host range and five biovars based on biochemical properties. Using molecular methods, *R. solanacearum* species complex (referred to as “*R. solanacearum*” for historic reason in this study) has been divided into four phylotypes and 53 sequevars (Fegan and Prior, 2005), and most recently into three *Ralstonia* species: *R. solanacearum* (referred to as “the current *R. solanacearum*” in this study), *R. pseudosolanacearum*, and *R. syzygii* (Safni et al., 2014). *R. solanacearum* normally enters its plant hosts via openings in roots and colonizes the xylem vessels causing disturbance of water transport and resulting in the appearance of wilt symptoms when its cell densities are over 10^8 CFU/cm stem (Huang and Allen, 2000). *R. solanacearum* is very difficult to control because of its wide host range, large genetic diversity and its capability for long-term survival in soil and water. It is, therefore, desirable to explore alternative control strategies such as the use of bacteriophages to combat *R. solanacearum*. Bacteriophages that have been tested so far for control of *R. solanacearum* have recently been reviewed by Alvarez and Biosca (2017).

Currently, a wide variety of bacteriophages that specifically infect *R. solanacearum* have been characterized and belong to the families *Inoviridae*, *Myoviridae*, *Podoviridae*, or *Siphoviridae*. Interestingly, all *Ralstonia*-infecting bacteriophages reported so far were isolated from soil collected from Asian countries including Japan (Yamada et al., 2007; Van et al., 2014; Thi et al., 2015; Bhunchoth et al., 2016; Askora et al., 2017), Thailand (Bhunchoth et al., 2015, 2016; Mihara et al., 2016), Korea (Murugaiyan et al., 2010; Park, 2018), China (Su et al., 2017; Liao, 2018), and Indonesia (Addy et al., 2018), except for one from Egypt (Ahmad et al., 2018) and another not from soil but from the culture supernatant of *R. solanacearum* strain UW551 (Ahmad et al., 2017b). Six *Ralstonia* phages in the family of *Myoviridae* have been characterized including RSA1 (Yamada et al., 2007; Fujiwara et al., 2008), RSL1 (Yamada et al., 2007, 2010), RSF1 (Bhunchoth et al., 2016), and RSY1 (Askora et al., 2017) isolated from soil in Japan, as well as RP15 (Mihara et al., 2016) and RSL2 (Bhunchoth et al., 2016) in Thailand. Among the six myoviruses, RSL1, RSL2, and RSF1 are jumbo phages with genome sizes over 220-kb and RP15 has a genome of 168-kb, while RSA1 and RSY1 are relatively small-genome phages of 39- and 40-kb in size, respectively. Although phages RSA1 and RSY1 are similar in genome size and genomic organization, they differ in the orientation of the integrase gene. In addition, RSY1 uses part of serine tRNA (GGA) gene, while RSA1 uses a portion of arginine tRNA (CCG) gene as the *att* region, resulting in the grouping of phages into RSA1-type and RSY1-type of the P2-like phages of *R. solanacearum* (Askora et al., 2017). Both the jumbo phage RSL1 and the small-genome phage RSA1 were characterized biologically for their biocontrol potential for *R. solanacearum*. They both displayed lytic activities against almost all tested *R. solanacearum* strains (belonging to the current *R. pseudosolanacearum* strains) isolated from Japan (Yamada et al., 2007) and reduced host bacterial cell density (Fujiwara et al., 2011). Populations of resistant *R. solanacearum* cells, however, were observed 30 h after phage RSA1 was added to the bacterial culture (Fujiwara et al., 2011), rendering RSA1

not suitable as a biocontrol for *R. solanacearum*. Subsequent greenhouse experiments with phage RSL1 demonstrated that this phage has a good potential for control of bacterial wilt caused by *R. solanacearum* (Fujiwara et al., 2011), although its potential against non-Japanese *R. solanacearum* species complex strains is unknown. These studies suggest that bacteriophages, even in the same virus family and that display similar *in vitro* lytic activities against large numbers of tested *R. solanacearum* strains, have different potential *in planta* as biocontrol agents, and detailed biological characterization of phages are needed before their biocontrol potential can be assessed.

In this study, we purified and characterized the first *Ralstonia*-infecting bacteriophage from soil samples collected from the United States, isolated from a tomato field in Florida. We also compared the phage to other bacteriophages, determined its integration mechanism, and evaluated its effect *in vitro* and *in planta* on its susceptible *R. solanacearum* host strain under controlled environment conditions.

MATERIALS AND METHODS

R. solanacearum Strains

Thirty *R. solanacearum* species complex strains used in this study are listed in Table 1. They were grown, maintained and their inocula prepared as described before (Stulberg et al., 2015).

Bacteriophage Isolation, Purification, and Characterization

Soil samples from a tomato field infested by *R. solanacearum* in Florida, United States were used for phage isolation. Ten grams of soil were mixed with water for a total volume of 30 ml in a sterile 50-ml centrifuge tube with gentle shaking overnight at room temperature to release bacteriophages. The tube was then centrifuged at $8,000 \times g$ for 20 min at room temperature, and the supernatant was filtered through a 0.45- μ m membrane. A 3 μ l aliquot of the filtrate was spotted on a double-layered casamino acid peptone glucose (CPG) plate (Ahmad et al., 2017b) except that *R. solanacearum* strain RUN302 was used as a bacterial host. The plate was incubated at 28°C for 24 h for the appearance of clear zones caused by phages. A single clear zone was removed, placed into 1 ml of SM buffer (100 mM NaCl, 10 mM MgSO₄, 50 mM Tris-HCl at pH 7.5, and 0.01% gelatin) (Sambrook and Russell, 2001), and vortexed vigorously prior to filtering through a 0.45- μ m membrane. The filtrate was then serially diluted with the SM buffer. One hundred microliters of the diluted filtrate was added to 400 μ l of 2×10^8 cells of *R. solanacearum* strain RUN302, incubated for 10–20 min at 28°C for phage absorption, and mixed with 3.5 ml of CPG containing 0.45% agar before layering the mixture on top of a CPG plate containing 1.5% of agar for the plaque assay to obtain single plaques. A single plaque was then picked, mixed with SM buffer, vortexed, filtered, serially diluted, and subjected to the plaque assay described above. The process was repeated two more times to complete the triple phage purification process to obtain a pure phage isolate designated RsoM1USA. To make a pure phage stock, a single plaque of phage RsoM1USA was removed and added to a 5 ml liquid CPG

TABLE 1 | Susceptibility of *R. solanacearum* species complex strains to phage RsoM1USA.

<i>R. solanacearum</i> species complex strain	Biovar, phylotype-sequevar	Origin	Susceptibility to phage RsoM1USA based on		
			Spot test ^a	EOP ^b	
<i>R. solanacearum</i>	RUN302	1, IIB-4	Brazil	S	10 ⁰
	K60	1, IIA-7	United States	S	5 × 10 ⁻¹
	P550	1, IIA-7	United States	S	6 × 10 ⁻²
	Rs5	1, IIA-7	United States	R	
	RUN074	1, IIB-3	Philippines	S	8 × 10 ⁻³
	AW1	1, IIA-7	United States	R	
	RUN036	1, IIA-36	Martinique	R	
	RUN651	1, IIB-4	France	R	
	4153	2, II	United Kingdom	S	3 × 10 ⁻²
	Pss1475	2, II	Taiwan	S	8.3 × 10 ⁻²
	RUN035	2, IIB-1	Netherlands	S	4.3 × 10 ⁻²
	RUN133	2, II-29	Cameroon	R	
	UW224	2, IIB-1	Kenya	R	
	UW257	2, IIB-1	Costa Rica	R	
	UW276	2, II	Mexico	R	
	UW344	2, IIB-1	Brazil	R	
	UW425	2, II	Australia	R	
	UW550	2, IIB-1	Netherlands	S	2 × 10 ⁻²
	UW551	2, IIB-1	Kenya	R	
	UW552	2, IIB-1	Guatemala	S	1 × 10 ⁻¹
UW349	2T, IIB-27	Brazil	S	4 × 10 ⁻¹	
<i>R. pseudosolanacearum</i>	DT3	3, I	Indonesia	R	
	GMI1000	3, I-18	French Guiana	R	
	HB512	3, I	China	R	
	Pss4	3, I-15	Taiwan	S	8 × 10 ⁻²
	Pss530	3, I	Taiwan	S	8 × 10 ⁻²
	Rs121	3, I	United States	R	
	UW152	3	Australia	R	
	Ps191	4, I	Taiwan	R	
<i>R. syzygii</i>	RUN083	2T, IV-10	Indonesia	R	

^a Susceptibility of *R. solanacearum* strains to phage RsoM1USA is shown as resistant (R) when no plaques were observed or susceptible (S) when clear plaques were observed. Phage spot test was performed using purified phage first, and the potentially susceptible strains were tested further by serial dilution plaque assay to confirm their susceptibility. ^b Efficiency of plating (EOP) values were calculated by dividing the phage titer on a given *Ralstonia* strain by the titer on strain RUN302, which showed the highest titer compared to other tested strains.

culture of 2×10^8 cells of *R. solanacearum* strain RUN302. It was grown overnight at 28°C with shaking, followed by centrifugation at $8,000 \times g$ for 20 min. The supernatant was filtered through a 0.45 μm membrane, and the filtrate stored in the dark at 4°C. The titer and the optimum multiplicity of infection (MOI) of the phage stock were determined using the plaque assay described above.

The phage particles were propagated, purified, and stored as described (Ahmad et al., 2017b), except that *R. solanacearum* strain RUN302 was used as the host strain. Briefly, the phage lysate was first cleared by low speed centrifugation ($8,000 \times g$ for 15 min), passed through a 0.45 μm membrane filter, and then layered on top of a 30% (wt/vol) sucrose cushion before ultracentrifugation at $50,000 \times g$ for 120 min at 10°C. To obtain a phage titer of about 10^{10} PFU/ml, the purification process may need to be repeated two or three times using the same volume of lysate each time and by ultracentrifugation through

a 30% sucrose cushion in the same tube where the pellet from previous ultracentrifugation was collected. The pellet was then resuspended in either TE or SM buffer.

To characterize the morphology of the phage, purified phage particles were used for negative staining with sodium phosphotungstate (Dykstra, 1993) before observation under a Hitachi HT7700 transmission electron microscope. Phage morphometrics were estimated from more than 10 phage particles using the open source imaging processing program ImageJ 1.50i (National Institutes of Health, United States).

Phage Host Range Test

To determine the host specificity of phage RsoM1USA, the purified phage was subjected to spot testing using 30 *R. solanacearum* species complex strains as hosts (Table 1). In this test, three microliters of the phage suspension (10^8 PFU/ml) was spotted on top of the double-layered CPG plate

(Ahmad et al., 2017b). The top layer was prepared with 350 μl of each *R. solanacearum* strain (OD₆₀₀ of 0.2) mixed with 4.5 ml of CPG. The plate was incubated overnight at 28°C. The formation of a lysis zone indicated that the bacterial strain was susceptible to the phage. Potentially susceptible strains were tested further by serial dilution plaque assay to determine if they were truly susceptible to the phage. In addition, the efficiency of plating (EOP) was determined based on Gill et al. (2011) by calculating the ratio of the phage plaque titer of *R. solanacearum* strain RUN302 to that of other tested bacterial strains.

One-Step Growth Experiment

The phage infection cycle was characterized with a one-step growth experiment based on Ellis and Delbruck (1939) with modifications. Two hundred microliters of 24-h culture of *R. solanacearum* strain RUN302 was transferred into 9.8 ml of CPG and grown at 28°C with shaking until the culture reached the OD₆₀₀ of 0.1 (10⁸ CFU/ml). Phage RsoM1USA was added at a MOI of 0.01 and allowed to adsorb for 15 min at 28°C. The mixture was then centrifuged at 6,000 $\times g$ for 5 min to remove any non-absorbed phage particles. The pellet was mixed with 10 ml of CPG, diluted 10,000-fold, and incubated at 28°C without shaking. An aliquot of 500 μl was taken every 30 min for 5 h, filtered through 0.45 μm membrane, diluted, and subjected to the plaque assay described above using RUN302 as a host to estimate phage titers. There were three replicates for each time point, and the experiment was repeated three times.

Thermal Stability Test

To determine the effect of temperature on phage stability, a thermal stability test was conducted at 4°C, and from 10–90°C with 10° intervals. The maximum of 90°C was tested to find out the lethal temperature for the phage, not as a temperature for biocontrol application. Briefly, the purified phage in SM buffer was diluted to 1 $\times 10^8$ PFU/ml and then 1 ml of the diluted phage suspension was incubated at each of the designated temperatures for 1 h. After incubation, the phage suspension was serially diluted in SM buffer and subjected to plaque assay using *R. solanacearum* RUN302 as a host to estimate phage numbers. There were three replicates for each temperature and the experiment was repeated three times.

Phage DNA Extraction, Sequencing, and Analysis

To determine the nature of phage RsoM1USA genome, approximately 1 μg of the phage genome was subjected to enzyme digestions with DNase I, RNase A, S1 nuclease, and exonuclease I as described (Ahmad et al., 2017b), as well as with restriction enzymes *EcoRV* and *SmaI* using standard molecular biology method (Sambrook and Russell, 2001).

Phage DNA was extracted from purified phage particles (described above) using either a phenol–chloroform method (Sambrook and Russell, 2001) or the Phage DNA Isolation kit (Norgen Biotek Corp., Canada). The phage DNA was sequenced, and the genome sequence assembled commercially by SeqMatic (Fremont, CA, United States). Potential open reading frames

(ORFs) larger than 50 amino acids (aa) were identified using the softwares PHASTER (Arndt et al., 2016) and DNASTAR (DNASTAR Inc., United States). The number of aa and the predicted molecular weight for the product of each ORF were calculated using the software ApE version 2.0.51 (University of Utah, United States). To assign possible functions of the ORFs, database searches were performed using BLASTp (Altschul et al., 1990) against NCBI and the Conserved Domain Databases, as well as against motif databases including TIGRFam, Pfam, SMART, PRK, COG and InterPro. The tRNAscan-SE 2.0¹ was used to search for tRNA genes (Lowe and Eddy, 1997).

Phylogenetic relationships between phage RsoM1USA and 13 phages representing each of the 13-current species in the genus *P2virus* under the subfamily *Peduvirinae* of the family *Myoviridae* were estimated. This was done using the method of Harrison and Langdale (2006) by multiple sequence alignment using Clustal Omega² (Sievers et al., 2011) to generate nexus-formatted files, followed by execution of the files using downloadable PAUP (Phylogenetic Analysis Using PAUP³) version 4.0a (Swofford, 2003). Phylogenetic analysis based on integrase was performed for 13 phages including RsoM1USA, since no annotation for an integrase has been found for *Burkholderia virus phiE122*. The accession and ORF numbers of the proteins used for the phylogenetic analysis are listed in Table 2.

Identification and Proteomic Analysis of RsoM1USA Virion Proteins

Fifty milliliters of purified phage filtrate were treated with 1 μl each of 10 mg/ml RNase A and DNase I for an hour at 37°C prior to adding chloroform at a final concentration of 10%, followed by centrifugation at 7,000 $\times g$ for 10 min at 4°C. The top phase containing phage particles was layered on a 20% (w/v) sucrose cushion and centrifuged by ultracentrifugation (Optima MAX-XP Ultracentrifuge, Beckman Coulter, United States) at 50,000 $\times g$ for 2 h at 4°C. The phage pellet was suspended in 500 μl of 10 mM Tris-HCl buffer pH 8. Aliquots from purified phage particles was sonicated, mixed with NorexTM tris glycine SDS buffer (2x) (Thermo Fisher Scientific, United States), heated at 85°C for 2 min, and subjected to SDS-PAGE [14% (w/v) polyacrylamide] (Laemmli, 1970). Gels were stained with Coomassie Brilliant Blue R250 stain reagent (Thermo Scientific, United States). The most abundant bands were cut out and sent to Bioproximity, LLC. (Chantilly, VA, United States) for protein identification using liquid chromatography-tandem mass spectrometry (LC-MS/MS).

Assay to Determine Phage Integration Regions

R. solanacearum strain K60 was used to determine where phage RsoM1USA integrated into the bacterial genome, since the complete genome sequence of K60 is publicly available

¹<http://lowelab.ucsc.edu/tRNAscan-SE/>

²<https://www.ebi.ac.uk/Tools/msa/clustalo>

³<http://phylosolutions.com/PAUP-test>

TABLE 2 | List of proteins and their ORFs or accession numbers of bacteriophages used for phylogenetic analysis in this study.

Bacteriophage	ORF # for phage RsoM1USA and accession # for other phages			
	Phage capsid protein	Terminase ATPase subunit protein	Phage portal protein	Integrase
Ralstonia phage RsoM1USA	MG747435 (ORF9)	MG747435 (ORF7)	MG747435 (ORF6)	MG747435 (ORF 56)
<i>Ralstonia virus RSA1</i>	YP_001165257.1	YP_001165255.1	YP_001165254.1	YP_001165299.1
<i>Mannheimia virus PHL101</i>	YP_655472.1	YP_655470.1	YP_655469.1	YP_655517.1
<i>Burkholderia virus phi52237</i>	YP_293748.1	YP_293751.1	YP_293752.1	YP_293708.1
<i>Burkholderia virus phiE122</i>	ABO60795.1	ABO60770.1	ABO60792.1	— ^a
<i>Burkholderia virus phiE202</i>	YP_001111033.1	YP_001111035.1	YP_001111036.1	YP_001111041.1
<i>Pseudomonas virus phiCTX</i>	NP_490602.1	NP_490600.1	NP_490599.1	NP_490644.1
<i>Salmonella virus PsP3</i>	NP_958060.1	NP_958058.1	NP_958056.1	NP_958084.1
<i>Salmonella virus SopEphi</i>	AAQ65016.1	AAQ65014.1	AAQ65013.1	AAQ64997.1
<i>Salmonella virus Fels2</i>	YP_001718745.1	YP_001718747.1	YP_001718748.1	YP_001718763.1
<i>Escherichia virus P2</i>	NP_046760.1	NP_046758.1	NP_046757.1	NP_046786.1
<i>Escherichia virus 186</i>	NP_052253.1	NP_052251.1	NP_052249.1	NP_052278.1
<i>Escherichia virus Wphi</i>	AAN28222.1	AAN28220.1	AAN28219.1	AAN28248.1
<i>Yersinia virus L413C</i>	NP_839853.1	NP_839851.1	NP_839850.1	NP_839878.1

^aAnnotation for an integrase was not found in the phage sequence.

(Hayes et al., 2017). In addition, the bacterial strain did not contain prophage sequence of RsoM1USA in its genome and is susceptible to the phage infection. To infect strain K60, an overnight culture of K60 was adjusted to OD₆₀₀ of 0.1 in 4.5 ml of liquid CPG. Phage RsoM1USA was then added at a MOI of 0.1 and adsorbed to bacterial cells for 15 min at 28°C, before incubation at 28°C with shaking at 150 rpm for 24 h. The infected bacterial cells were harvested by centrifugation at 6,000 × g for 10 min at 4°C, and the pellet was suspended in sterile water and used for DNA extraction as described by Sambrook and Russell (2001). PCR primers designed and used for this study are listed in Table 3. The primers were designed based on the nucleotide sequences flanking the predicted attP site in phage RsoM1USA and attB site in *R. solanacearum* strain K60.

PCR was performed in a 20-μl volume containing 1x GoTaq Green Master Mix (Promega, United States), 10 pmol of each primer, and 25 nanograms of DNA. PCR conditions were 1 cycle of 1 min at 94°C, 30 cycles of 30 s at 94°C, 30 s at 60°C, and 1 min at 72°C with a final extension of 10 min at 72°C. The PCR products were purified from agarose gels with the QIAquick gel extraction kit (Qiagen, Inc.) and sequenced by Eurofins Scientific (United States).

Assay for *in vitro* Growth of Phage-Treated *R. solanacearum* Strains

To determine the effect of phage infection on the *in vitro* growth of its susceptible *R. solanacearum* strain, phage RsoM1USA-treated and untreated *R. solanacearum* RUN302 strains were grown in CPG in 24-well plates (Corning® Sigma, United States) at 28°C. Briefly, the concentration of the overnight culture of strain RUN302 was adjusted with CPG to approximately 10⁸ CFU/ml, and 1.5 ml of the bacterial suspension was added to each well of the 24-well plate. One hundred and fifty

microliters of phage suspension were then added at a MOI of 0.001, 0.01, 0.1, 1.0, and 10, respectively, and the plate was incubated inside a multi-plate reader Epoch2 (BioTek, United States) with slow shaking. SM buffer was used as a phage control (MOI of 0). Bacterial growth indicated by absorbance at 600 nm was measured every 60 min and graphed every 5 h for 35 h. There were three replicates for each MOI treatment and the experiment was repeated three times.

Virulence Assay in Tomato Plants

Tomato plants (*Lycopersicon esculentum* Mill. cv. 'Bonnie Best') were grown, transplanted and inoculated as described previously (Ahmad et al., 2017b), except that 40 ml of bacterial suspension containing a total of 4 × 10⁹ cells of *R. solanacearum* strain RUN302 was added as a soil drench into each pot. This was followed immediately by pouring 40 ml of phage RsoM1USA suspension (10⁷ PFU/ml) for a MOI of 0.1 into the pot, or water for a control (MOI of 0). Negative control plants were inoculated with 80 ml of water. Inoculated plants were rated daily using a disease index (DI) of 0 to 4 (Roberts et al., 1988). Disease severity was calculated each day using the formula: Disease severity = [Σ(*n* × DI)/4*N*] × 100, where *n* is the number of plants in each DI category and *N* is the total number of plants in each treatment. There were 12 plants for each treatment and the experiment was repeated three times.

Statistical Analysis

Data for phage thermal stability and *in vitro* growth of *R. solanacearum* strains 35 h after phage RsoM1USA treatment at MOIs of 0.001, 0.01, 0.1, 1, and 10 were analyzed by one-way ANOVA using free web-based statistical software⁴. Tukey's

⁴<http://vassarstats.net/anova1u.html>

TABLE 3 | List of primer pairs designed and used in this study.

Primer pair	Sequence (5'–3')	Position in phage RsoM1USA or <i>R. solanacearum</i> strain K60* (italicized)	Size of PCR product (bp)	Target
tRNA-349F	CAGTCTGTGTACGACGTGGC	36,097–36,116	1,068	<i>attP</i>
tRNA-349R	CGGACAAAGCCCTCTTCGAC	37,145–37,164		
attB-K60-F	AAACTGTCCGCTGTGGAGTC	2,473,579–2,473,598	452	<i>attB</i>
attB-K60-R	CCCTTTGATGCGTTGGTACT	2,474,011–2,474,030		
attB-K60-F	AAACTGTCCGCTGTGGAGTC	2,473,579–2,473,598	720	<i>attL</i>
tRNA-349R	CGGACAAAGCCCTCTTCGAC	37,145–37,164		
tRNA-349F	CAGTCTGTGTACGACGTGGC	36,097–36,116	800	<i>attR</i>
attB-K60-R	CCCTTTGATGCGTTGGTACT	2,474,011–2,474,030		

* Accession no: NCTK01000001.1.

Honest Significant Difference test included in the software was used to compare means. The mean disease severity between the untreated and phage RsoM1USA-treated *R. solanacearum* RUN302 strains were analyzed for significant differences using the *t*-test in Microsoft Excel. The *t*-test was also performed for *in vitro* growth of *R. solanacearum* strain RUN302 between RsoM1USA-untreated (MOI of 0) and treated (MOI of 0.001, 0.01, 0.1, 1 or 10) strains 10, 15, and 35 h after phage treatment. Differences were considered statistically significant if $p < 0.05$.

Nucleotide Sequence Accession Numbers

The complete genome sequence of phage RsoM1USA has been submitted to GenBank and given accession no. MG747435. The accession numbers for *R. solanacearum* strain sequences used in this study are: GMI1000, NC_003295; 23-10BR, JQOI01000031.1; Po82, NC_017574.1; and K60, NCTK01000001.1.

RESULTS

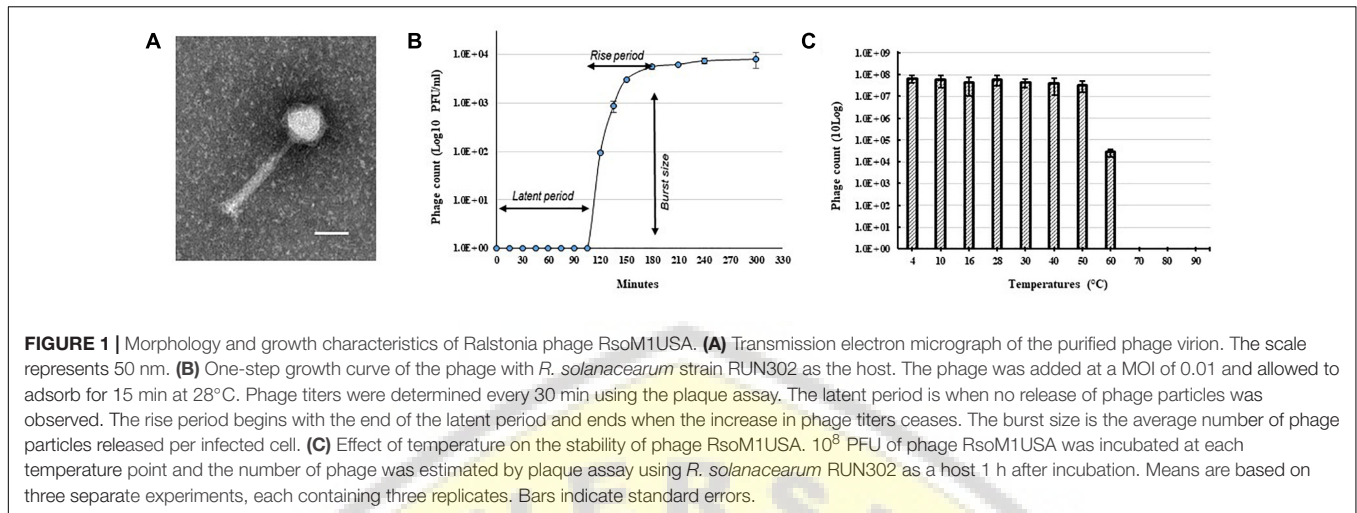
Morphology, Host Specificity, and Growth Characteristics of Ralstonia Phage RsoM1USA

A bacteriophage isolated from soil collected from a tomato field in Florida, United States produced clear and round plaques with a diameter of approximately 5 mm on double layered CPG plates using *R. solanacearum* strain RUN302 as a host. The purified phage had an icosahedral capsid with a size of 62.68 ± 2.17 nm \times 66.17 ± 2.61 nm ($n = 10$) and a long contractile tail with a length of 151.96 ± 4.92 nm and a width of 19.63 ± 0.72 nm ($n = 10$) (Figure 1A). In addition, the phage has a relatively long “neck” (Figure 1A) compared to other myoviruses such as RP15 (Mihara et al., 2016) and the diameter of its sheath increased approximately 3 nm ($n = 12$) during contraction, resembling the members of *Peduvirinae*. The phage was designated Ralstonia phage RsoM1USA using our phage identifier naming system (Ahmad et al., 2018) based on the informal guidelines by Adriaenssens and Brister (2017) and the proposed scheme by Kropinski et al. (2009), since it is the first *R. solanacearum*-infecting bacteriophage belonging to the family *Myoviridae* that was isolated from the United States.

To determine the host specificity of phage RsoM1USA, 30 *R. solanacearum* strains originally isolated from different geographic locations of the world were tested for their susceptibility to the phage (Table 1). Phage RsoM1USA infected 12 of the 30 tested strains, including members of biovars 1, 2, 2T, and 3 belonging to each of the current *R. solanacearum* and *R. pseudosolanacearum* species (Table 1). The efficiency of phage plating was also determined for the 12 susceptible strains, and strain RUN302 was found to have the highest efficiency of phage infection (Table 1). The infection cycle of the phage was determined to be 180 min, including a 105 min of latent period, followed by a 75-min rise period with a burst size of 56 ± 6 particles per infected cell (Figure 1B). Phage RsoM1USA was stable from 4 to 50°C, since its titer at that temperature range remained similar at approximately 10^8 PFU/ml (Figure 1C). Significant loss in the phage titer, however, was observed at 60°C, and no phage particles were detected after they were incubated at 70, 80, and 90°C for 1 h (Figure 1C).

Genome Characterization of Ralstonia Phage RsoM1USA

The genome of phage RsoM1USA1 was degraded by DNase I, but not by RNase A, Exonuclease I and S1 nuclease (data not shown). The genome was also digested into multiple bands when treated with restriction enzymes *EcoRV* and *SmaI* (data not shown). The complete nucleotide sequence of the Ralstonia phage RsoM1USA was determined and submitted to GenBank (accession no. MG747435). The phage genome consists of 39,309 bp with a G+C content of 65.33%. Fifty-eight potential ORFs were identified in phage RsoM1USA (Supplementary Table S1). Among them, 48 started with methionine (ATG), four with leucine (CTG for ORFs 1 and 52 and TTG for 18 and 36), and five with valine (GTG) for ORFs 5, 14, 21, 23, and 37). ORF35, however, started with GTC (valine), an unusual start codon described by Feeney et al. (2017). Forty-two ORFs ended with TGA, nine with TAG (ORFs 2, 18, 22, 23, 26, 29, 52, 57, and 58) and seven with TAA (ORFs 6, 28, 33, 36, 39, 45, and 55). When the whole genome sequence of phage RsoM1USA was used as a query to search GenBank by BLASTn, the phage was found to be most closely related to *R. solanacearum* phage RSA1 (Yamada et al., 2007; Fujiwara et al., 2008), the member of the species *Ralstonia virus RSA1* in the genus *P2virus*, with 89% nucleotide identity and 79%



coverage. Each of the 58 ORFs of phage RsoM1USA was used as a query to search GenBank by BLASTp, and their positions, and predicted functions are summarized in **Supplementary Table S1**. Each of the ORFs was also compared to ORFs of ϕ RSA1 and their similarity levels are indicated in **Figure 2**.

Gene Organization of Phage RsoM1USA and Comparison to Phage RSA1

The predicted ORFs of phage RsoM1USA can be categorized into the following four functional gene groups: metabolism (transcription and regulatory), structure (head and tail), lysis and integration, as well as hypothetical and other proteins.

(i) Metabolism

Eight ORFs were annotated to play a role in the phage's metabolism, including ORF33 for a site-specific DNA-methyltransferase, ORF35 for a XRE family transcriptional regulator, ORF36 for a transposase, ORF37 for an insertion element repressor, ORF41 for phage transcription activator Org/Delta, a member of the zinc finger recombinase superfamily (pfam04606), ORF50 for a RNA binding protein, and ORF51 for a DNA primase. ORF57 was annotated to encode a ParA family protein, which were identical to its counterpart in *R. solanacearum* strain 23-10BR but shared no sequence homology to any other *Ralstonia* phages including RSA1.

(ii) Structure

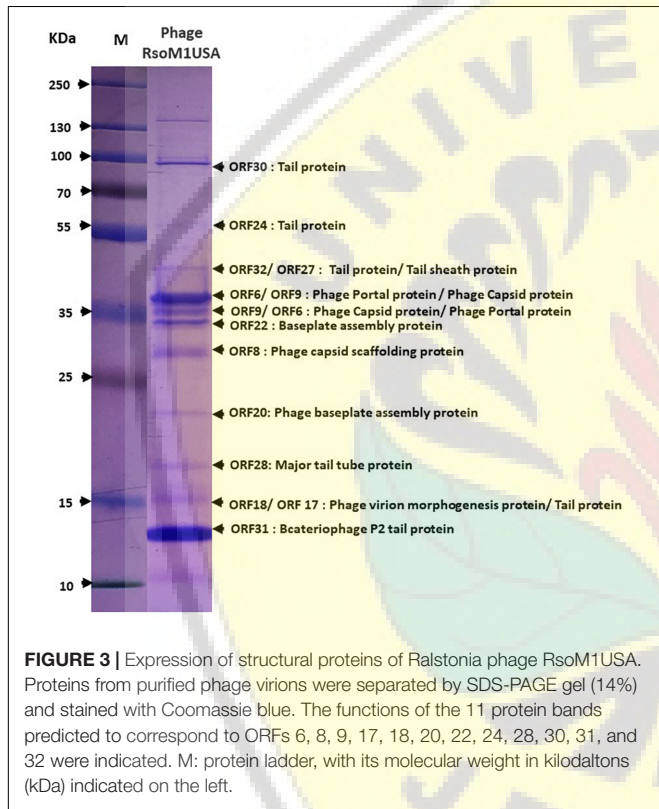
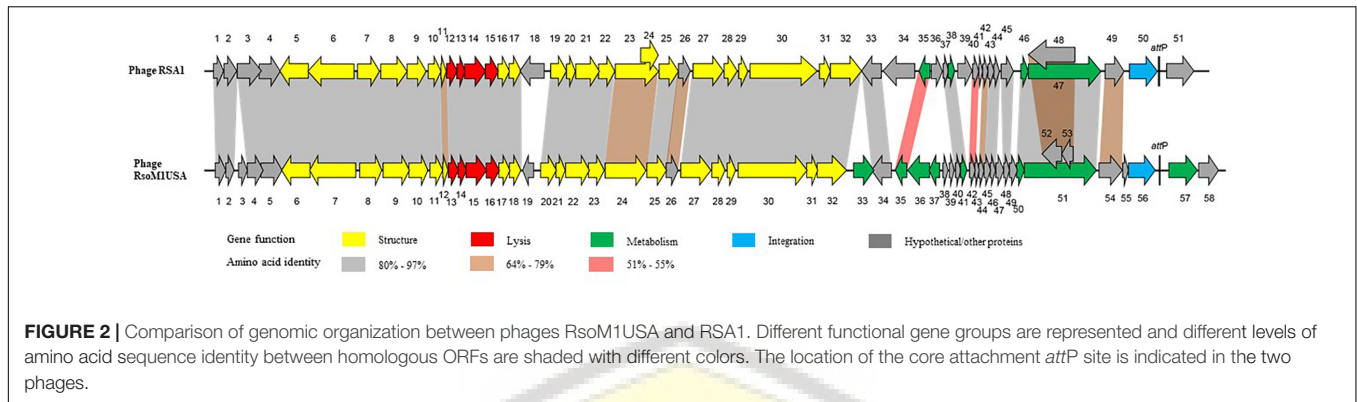
Twenty-one ORFs were predicted to be involved in morphogenesis of phage RsoM1USA including 6 for capsid- and 15 for tail-related proteins (**Supplementary Table S1**). ORFs encoding phage capsid-related proteins included ORF 6 to ORF 11 for putative portal protein (ORF6), terminase (ORFs 7 and 10), scaffolding protein (ORF8), major capsid protein (ORF9), and head completion/stabilization protein (ORF11). ORFs encoding phage tail-related proteins included ORFs 12, 17, 18, 23, 29 to 32 for tail, ORFs 20 to 22 for baseplate, ORFs 24 and 25 for tail fiber, and ORFs 27 and 28 for tail sheath proteins. All structural

genes of phage RsoM1USA shared aa sequence identity of 70 to 97% with the corresponding ORFs in phage RSA1 (**Figure 2** and **Supplementary Table S1**). The genomic organization of the structural genes in the two phages is also very similar, except that ORF19, located between the structural genes *orf18* and *orf20* in phage RsoM1USA, was annotated as a hypothetical protein and did not share any aa sequence homology with the similarly located ORF18 in phage RSA1 (**Figure 2** and **Supplementary Table S1**), which was also annotated as a hypothetical protein in phage RSA1 (Fujiwara et al., 2008).

To confirm the identity of the major structural components of phage RsoM1USA, proteomic analysis of the purified phage virions was performed by SDS-PAGE gel. At least 11 proteins ranging from 15 to over 90 kDa were separated in the gel (**Figure 3**). These bands were cut out and sequenced commercially. Based on the peptides identified using mass spectrometry and their relative abundance, as well as comparison to the deduced amino acid sequences and molecular masses of ORFs in phage RsoM1USA, the 11 bands most likely correspond to phage tail (ORFs 17, 24, 30 and 32), tail sheath (ORF27), portal (ORF 6), capsid (ORF9), baseplate assembly (ORFs 20 and 22), capsid scaffolding (ORF8), major tail tube (ORF28), virion morphogenesis (ORF 18), and bacteriophage P2 tail (ORF 31) proteins (**Figure 3**).

(iii) Lysis and Integration

Four consecutive ORFs (ORFs 13 to 16) were predicted to be involved in lysis of bacterial cells. ORFs 13 and 14 were annotated to encode phage-related transmembrane proteins, sharing aa sequence identity of 100% to the membrane protein and to the phage holin family protein, respectively, of *R. solanacearum* strain 23-10BR (**Supplementary Table S1**). ORF15 was predicted to be a peptidoglycan-binding protein (99% identity to *R. solanacearum* strain 23-10BR sequence) (**Supplementary Table S1**). ORF16 shared high aa sequence identity to a peptide in *R. solanacearum* strain 10-23BR (**Supplementary Table S1**), that may be involved in host lysis through endolysins with signal peptides (Catalao et al., 2013).



ORF56 of phage RsoM1USA was annotated as an integrase, as was ORF50 in phage RSA1. Surprisingly, however, the two integrase sequences did not share any aa sequence identity (Figure 2).

(iv) Hypothetical and Other Proteins

Twenty-four ORFs of phage RsoM1USA were annotated as hypothetical proteins, or proteins with other functions. Nineteen ORFs had homologs in phage RSA1, but ORFs 3, 19, 38, 39, and 49 did not. ORF55 was located before and ORFs 57 and 58 after the integrase (ORF56) and *attP* region in phage RsoM1USA, while no counterpart for ORF55 was present and only one ORF (ORF51) was found after the integrase (ORF50) and *attP* region in phage RSA1 (Figure 2). In addition, ORFs 57 and 58 of phage

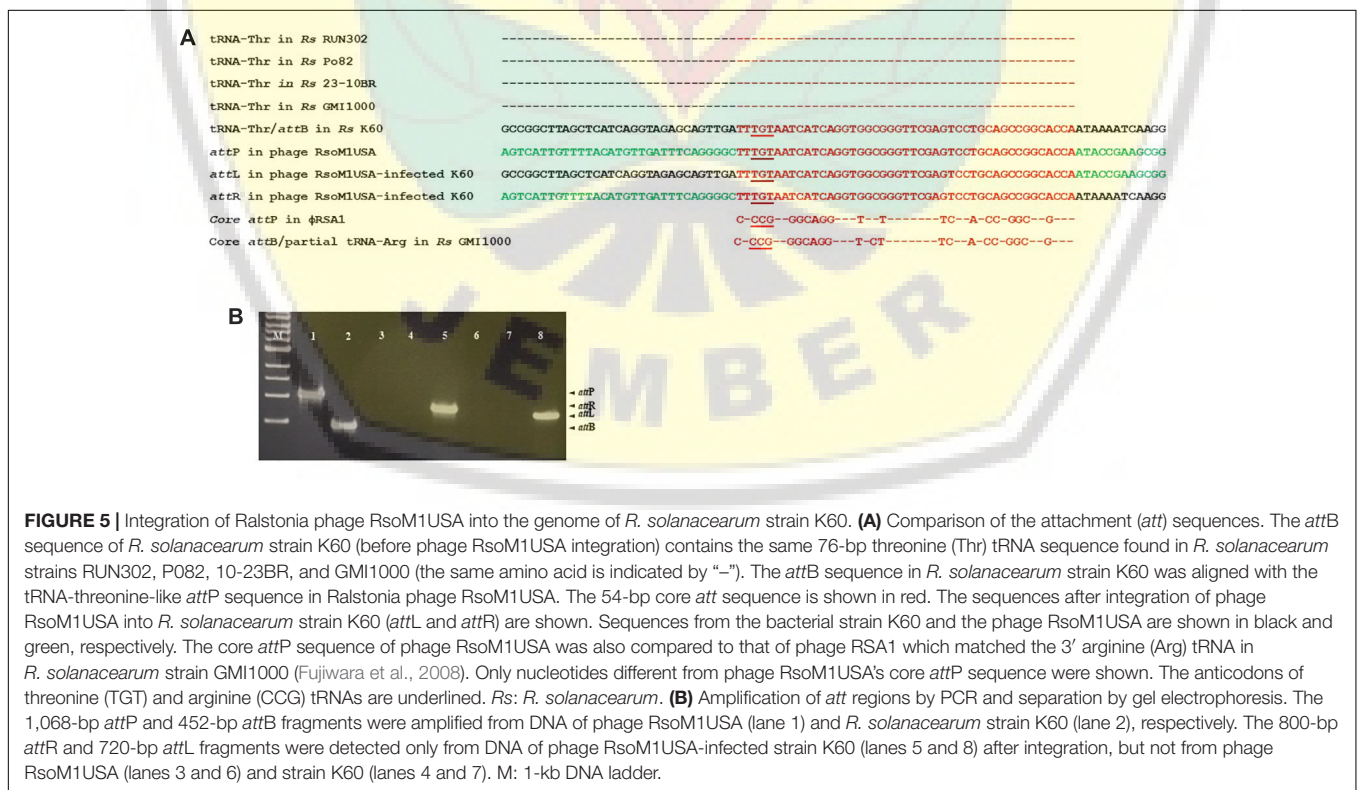
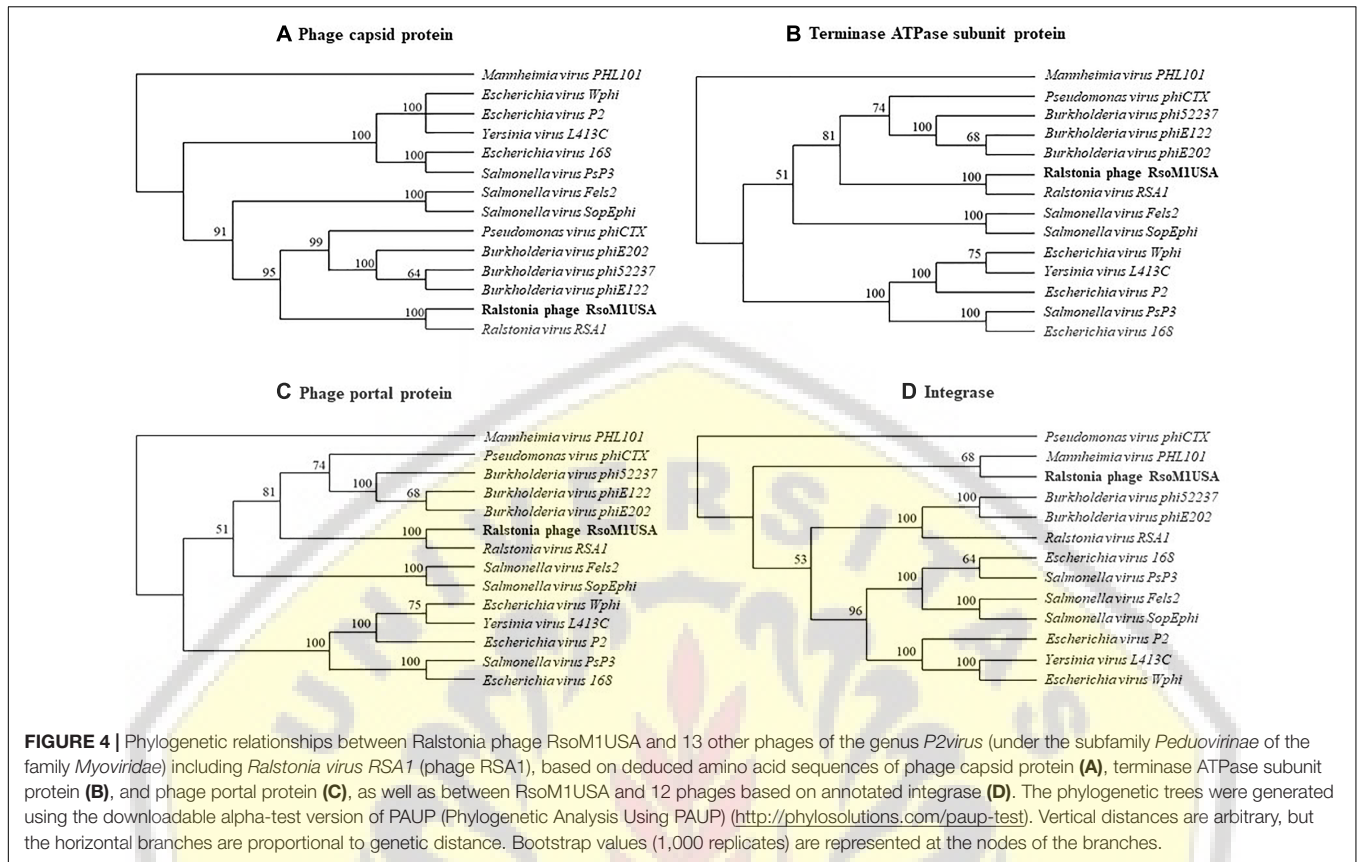
RsoM1USA did not share any aa sequence homology with ORF51 of phage RSA1 (Figure 2).

Phylogenetic Relationships Between Phages RsoM1USA and RSA1

Phylogenetic relationships were determined among phage RsoM1USA and 13 members of the genus *P2virus* under the subfamily *Peduvirinae* of the family *Myoviridae* (Figure 4). A phylogenetic tree generated based on the deduced aa sequences of phage capsid proteins showed that phage RsoM1USA is more closely related to *Ralstonia* phage RSA1 than to the other 12 members of the *P2virus* (Figure 4A). Similar trees were also obtained when the deduced aa sequences of terminase ATPase subunit and phage portal proteins were used, respectively (Figures 4B,C). Phage RsoM1USA was shown to be more closely related to *Mannheimia virus* PHL101 than to phage RSA1, however, when the deduced aa sequences of the integrase protein was used for phylogenetic analysis (Figure 4D).

Integration and Attachment Site for Phage RsoM1USA

By BLAST search, we identified a tRNA-threonine-like sequence, corresponding to nucleotides 36,657 to 36,732, in phage RsoM1USA (Figure 5A). This sequence matched 100% to the 45 nucleotides at the 3' end of the 76-bp threonine tRNA sequences in *R. solanacearum* strains RUN302, Po82, 23-10BR, GMI1000 and K60 (Figure 5A), suggesting that phage RsoM1USA contains a *attP* site where it recombines with the homologous bacterial *attB* site for the phage to integrate into the bacterial genome. To confirm that this 45-bp core sequence is involved in the integration of phage RsoM1USA into its susceptible *R. solanacearum* strain K60, the left and right integration flanking regions, *attL* and *attR*, were amplified by PCR using DNA of phage RsoM1USA-infected K60 as a template (Figure 5B) followed by sequencing of the PCR products (Figure 5A). Both the *attL* and *attR* fragments contained the 45-bp core *att* sequence that is in both the bacterial K60 and the phage RsoM1USA genomes (Figure 5A). The *attL* fragment contained K60 genome sequence upstream and phage RsoM1USA sequence downstream of this core sequence (Figure 5A). The *attR* site had phage RsoM1USA sequence



upstream and K60 sequence downstream of the core sequencing (Figure 5A), the reverse of the orientation found for the *attL* site, confirming that the 45-bp core sequence is the site of phage integration.

Effects of Phage RsoM1USA on *R. solanacearum* Strain RUN302 *in vitro* and *in planta*

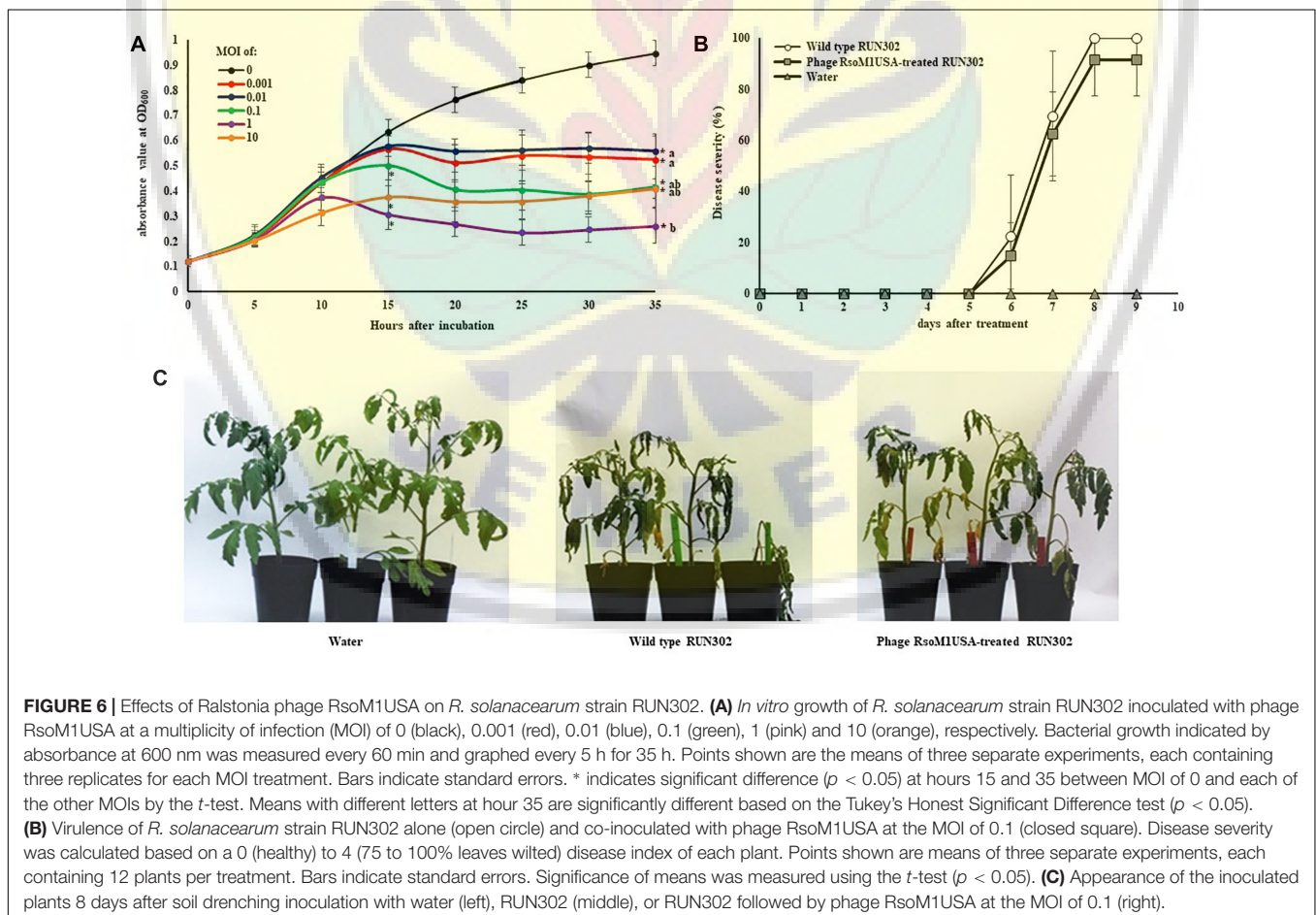
To study the effect of phage RsoM1USA on the *in vitro* growth and virulence of its susceptible *R. solanacearum* strain RUN302, we compared the *in vitro* growth and virulence of the wild type RUN302 to those of the phage-treated RUN302 of *R. solanacearum*. Strain RUN302 was chosen for the study because it showed the highest efficiency of phage infection (Table 1) and did not contain any intact prophages like prophage RsoM1USA in its genome before phage treatment. The growth of phage-treated *R. solanacearum* strain RUN302 was significantly reduced 15 h after phage treatment at MOI of 0.1, 1, and 10 ($p < 0.05$), and 35 h at all tested MOIs ($p < 0.05$) (Figure 6A). Since MOIs of 10, 1 and 0.1 resulted in similarly reduced bacterial growth 35 h after the phage treatment ($p < 0.05$) (Figure 6A), the lowest MOI of 0.1 was chosen for virulence assays in tomato plants for practical purposes. Results from our virulence assays revealed that both the untreated and the phage-treated RUN302

strains started to wilt tomato plants 6 days after soil drenching inoculation, and reached disease severity of over 80% by day 8 (Figures 6B,C). The overall disease severity caused by untreated RUN302 was not statistically different from that caused by the phage-treated RUN302 ($p = 0.423$ by the *t*-test at day 9) (Figure 6B). Tomato plants inoculated with water displayed no disease symptoms (Figures 6B,C).

DISCUSSION

RsoM1USA is the first *Ralstonia*-infecting phage isolated from soil of the United States from a tomato field in Florida. We purified the phage and determined the phage to be a member of the genus *P2virus* in the family *Myoviridae* based on its morphology. The phage was designated RsoM1USA using the systematic phage identifier naming approach we proposed previously to make the phage name not only unique but also meaningful regarding the phage's host species, morphology and origin (Ahmad et al., 2018).

Phage RsoM1USA contains all genes responsible for the morphogenesis of the phage head or capsid assembly as described by Fujiwara et al. (2008) and Fokine and Rossmann (2014), and those genes have high sequence homology (70–97%) with those



of phage RSA1. It is, therefore, not surprising that virions of phage RsoM1USA resemble those of phage RSA1 (Yamada et al., 2007), displaying an icosahedral capsid and a long contractile tail with a tail sheath. Like phage RSA1, phage RsoM1USA encodes putative lysis genes commonly found in P2-like phages (Christie and Calendar, 2016) such as holin, suggesting that RsoM1USA may lyse host cells using holin and endolysin. Holin plays a key role in host lysis by forming large pores that are utilized as transport channels for endolysin to access and degrade the peptidoglycan layer resulting in host lysis (Shin et al., 2014). It is worth noting that both phages contain ORF1, encoding a protein similar to the PAAR (proline-alanine-alanine-arginine)-domain containing protein. This protein has been found mostly in beta- and gamma-proteobacteria such as *Serratia marcescens*, *Vibrio cholerae*, or *Acinetobacter baylyi* (Shneider et al., 2013; Cianfanelli et al., 2016). It is known to be a component of the spike complex of the bacterial type VI secretion system (T6SS) and has been reported to play a role in bacterial virulence (Shneider et al., 2013; Cianfanelli et al., 2016). In addition to the similarity in gene organization, the two phages are also similar in size (39,309 vs. 38,760-bp), and are closely related to each other (Figures 4A–C). Since phages RsoM1USA and RSA1 were isolated from soil in the United States and Japan, respectively, it raises an interesting question how the phages obtained from two different countries across continents share morphological and genomic similarities. It is likely that the two phages share common ancestry, as Hendrix et al. (1999) proposed for “all of the dsDNA tailed phages.” Many ORFs of phage RsoM1USA also have high sequence identity with prophage sequences in *R. solanacearum* strain 23-10BR (Supplementary Table S1), which is a sequevar 27 strain isolated from Brazil (Clarke et al., 2015), suggesting evolutionary relationships between the phage and bacterial strain.

Despite the similarities between phages RsoM1USA and RSA1, the two phages are different in the following ways: (1) The genes for metabolism are highly variable between the two phages. Among the eight ORFs annotated to have metabolic functions in phage RsoM1USA, one (ORF 35) shared low sequence homology with and four (ORFs 33, 36, 37, and 57) have no counterpart ORFs in phage RSA1 (Figure 2). Instead, they share some sequence homology with *R. solanacearum* strains including 23-10BR and CQPS-1 (Supplementary Table S1). (2) Seven ORFs in phage RsoM1USA annotated as hypothetical/other proteins have no corresponding ORFs in phage RSA1. (3) Myoviruses are known to integrate into bacterial genomes mediated by a portion of bacterial tRNA, an *att* site, as in the cases of phages RSA1 and RSY 1 of *R. solanacearum* (Fujiwara et al., 2008; Askora et al., 2017), phage 16-3 of *Rhizobium meliloti* (Blaha et al., 2004), and phage vB_RleM_PPF1 on *Rhizobium leguminosarum* (Halmillawewa et al., 2016). We confirmed experimentally that phage RsoM1USA uses the 3' 45-base portion of the threonine tRNA (TGT) gene as its *att* site (Figure 5), which is different from RSA1 which uses the 3' 45-base of the arginine tRNA (CCG) gene (Fujiwara et al., 2008). This is also different from the *Ralstonia*-infecting myovirus RSY1 which uses a 3' 15-base portion of the serine tRNA (GGA) gene for integration and contains an integrase gene in opposite orientation (Askora et al.,

2017). In addition, putative integrases encoded by ORF56 of phage RsoM1USA and ORF 50 of phage RSA1 have no sequence identity. The phylogenetic trees derived from the deduced amino acid sequences of capsid, terminase ATPase subunit and portal proteins all suggest that phage RsoM1USA is more closely related to the *Ralstonia* phage RSA1 than to other myoviruses in the genus *P2virus* (Figures 4A–C). A phylogenetic tree derived from deduced amino acid sequences of integrase, however, revealed that RsoM1USA is more closely related to *Mannheimia virus PHL101* than to phage RSA1 (Figure 4D). These results suggest that integrases in the two phages may be evolved from different sources and they use different mechanism for integration. In view of these differences, phage RsoM1USA is either a variant of phage RSA1 or represents a third group, the RsoM1USA-type, in the p2-like lineages of *R. solanacearum* phages. At the species level, phages RsoM1USA and RSA1 are different based on their 89% nucleotide sequence identity, which is less than the 95% identity in DNA sequence conventionally used as a criterion to be considered the same species (Addy et al., 2018). As a result, the *Ralstonia* phage RsoM1USA should be considered a member of a new species with a proposed species name of *Ralstonia virus RsoM1USA* under the genus *P2virus* in the family *Myoviridae*.

Phage RsoM1USA is capable of infecting strains belonging to different *Ralstonia* species and originated from different geographic locations. Out of the 30 tested *R. solanacearum* species complex strains collected worldwide, 12 were susceptible to phage RsoM1USA including biovars 1, 2, 2T and 3 strains in two of the recently classified *Ralstonia* species: the current *R. solanacearum* (phylotypes II and III) and *R. pseudosolanacearum* (phylotypes I) originally isolated from the United States, Brazil, United Kingdom, Netherlands, Guatemala, and Taiwan (Table 1). It is worth noting that previous host range studies for *Ralstonia* phages used strains isolated only from the testing country (Yamada et al., 2007; Murugaiyan et al., 2010). In addition, those tested bacterial strains belong only to the current *R. pseudosolanacearum* species, making it harder to assess the biocontrol potential of the *Ralstonia* phages on *Ralstonia* strains beyond that country and species.

Compared to the untreated *R. solanacearum* strain RUN302, the *in vitro* growth of phage RsoM1USA-treated *R. solanacearum* strain RUN302 was significantly reduced when the phage was added to the bacterial cells at MOIs of 0.001 to 10. We used MOI of 0.1, not a higher one like 1 or 10, in our virulence assay is because by the Tukey's Host Significant Difference test for the five MOIs used (0.001, 0.01, 0.1, 1, and 10), no significant difference in *in vitro* growth of *R. solanacearum* strain RUN302 treated by phage RsoM1USA was found at a MIO of 0.1, 1 or 10. We therefore chose the lowest MOI for practical purposes. The disease severity caused by the phage-treated RUN302 strain, however, was not affected in tomato plants. This suggests that the activity of a phage *in vitro* on a synthetic medium is not always correlated with its activity *in planta* under artificial or natural environment (soil or potting mix). The latter is chemically and physically more complex and may affect phage-bacterial host interaction and phage infectivity, particularly during phage

absorption stage (Marsh and Wellington, 1994). Kimura et al. (2008) found that phage particles can be absorbed to soil with the degree of absorption over 90%, therefore decreasing the number of free phage particles available to infect bacterial hosts.

By BLAST search, the 45-bp *attP* site was found with 100% identity to the 45 nucleotides at the 3' end of the 76-bp threonine tRNA sequences corresponding to nucleotide 1,494,395 to 1,494,470 in *R. solanacearum* strain RUN302 [(with an alternative name of IBSBF 1503 (Wicker et al., 2007)) (Figure 5), suggesting that phage RsoM1USA is capable of integrating into the genome of RUN302, causing no significant effect on bacterial virulence. This is similar to what was found for Ralstonia phage RSA1, the most closely related phage to RsoM1USA. Phage RSA1 uses the 3' 45-base arginine gene for integration and results in no significant changes in virulence with RSA1 lysogenic cells *in planta* (Fujiwara et al., 2008). This, however, would be different from previously characterized lysogenic bacteriophages, which have been demonstrated under greenhouse conditions to either significantly enhance virulence (e.g., Ralstonia phage RSS1 in Addy et al., 2012b) or reduce virulence (e.g., Ralstonia phage Rs551 in Ahmad et al., 2017b and Xanthomonas phage XacF1 in Ahmad et al., 2014). Ralstonia phage RSM3 even caused loss of virulence of phage-infected *R. solanacearum* strain MAFF106611 (Addy et al., 2012a), but further studies are needed to develop this phage into a biocontrol agent. Whether these are the reasons why phage RsoM1USA did not prevent plant disease caused by *R. solanacearum* is worthy of future research. Future research is also needed to determine whether phage RsoM1USA plays an important ecological role in “regulating the virulence of and offering competitive fitness to its carrier bacterial strain for persistence of the bacterium in the environment,” similar to what Ralstonia phage Rs551 does (Ahmad et al., 2017a). These studies are important for a better understanding of the relationships among phages, bacterial hosts and their environments for effective control of *R. solanacearum*.

CONCLUSION

A *Ralstonia*-infecting bacteriophage designated RsoM1USA was isolated from soil of the United States. It is a member of

REFERENCES

- Addy, H. S., Askora, A., Kawasaki, T., Fujie, M., and Yamada, T. (2012a). Loss of virulence of the phytopathogen *Ralstonia solanacearum* through infection by ϕ RSM filamentous phages. *Phytopathology* 102, 469–477. doi: 10.1094/PHYTO-11-11-0319-R
- Addy, H. S., Askora, A., Kawasaki, T., Fujie, M., and Yamada, T. (2012b). The filamentous phage ϕ RSS1 enhances virulence of phytopathogenic *Ralstonia solanacearum* on tomato. *Phytopathology* 102, 244–251. doi: 10.1094/PHYTO-10-11-0277
- Addy, H. S., Farid, M. M., Ahmad, A. A., and Huang, Q. (2018). Host range and molecular characterization of a lytic *Pradovirus*-like Ralstonia phage RsoP1IDN isolated from Indonesia. *Arch. Virol.* 163, 3409–3414. doi: 10.1007/s00705-018-4033-1
- Adriaenssens, E. M., and Brister, J. R. (2017). How to name and classify your phage: an informal guide. *Viruses* 9:E70. doi: 10.3390/v9040070

Myoviridae containing 39,309 nucleotides with 58 ORFs. It is closely related to Ralstonia phage RSA1 but is different from RSA1 mainly in integrase and in utilizing the threonine tRNA as the *att* region for integration. Phage RsoM1USA should be considered a member of a new species with a proposed species name of *Ralstonia virus RsoM1USA*. Although phage RsoM1USA significantly reduced the *in vitro* growth of *R. solanacearum* strain RUN302 at MOIs between 0.001 and 10, it had no significant effect in reducing disease symptoms of RUN302 in tomato plants at MOI of 0.1 when compared to the untreated controls. The role of phage RsoM1USA, if any, in providing competitive fitness to its carrier bacterial strains remains to be determined.

AUTHOR CONTRIBUTIONS

HA, AA, and QH conceived and designed the experiments and analyzed the data. HA and AA performed the experiments. QH contributed to the reagents, materials, and analysis tools. HA and QH wrote the manuscript.

FUNDING

This research was financially supported by the United States Department of Agriculture, Agricultural Research Service.

ACKNOWLEDGMENTS

We thank Joseph Mowery and the Beltsville Electron and Confocal Microscope Unit for technical assistance, and Dr. John Hartung at USDA/ARS for critical review of the manuscript. We also thank Dr. Mathews Paret and his students at University of Florida for providing soil samples.

SUPPLEMENTARY MATERIAL

The Supplementary Material for this article can be found online at: <https://www.frontiersin.org/articles/10.3389/fmicb.2019.00267/full#supplementary-material>

- Ahmad, A. A., Askora, A., Kawasaki, T., Fujie, M., and Yamada, T. (2014). The filamentous phage XacF1 causes loss of virulence in *Xanthomonas axonopodis* pv. *citri*, the causative agent of citrus canker disease. *Front. Microbiol.* 5:321. doi: 10.3389/fmicb.2014.00321
- Ahmad, A. A., Elhalag, K. M., Addy, H., Hussien, A. S., Nasr-Eldin, M. A., and Huang, Q. (2018). Sequencing, genome analysis and host range of a novel Ralstonia phage RsoPIEGY isolated from Egypt. *Arch. Virol.* 163, 2271–2274. doi: 10.1007/s00705-018-3844-4
- Ahmad, A. A., Stulberg, M. J., and Huang, Q. (2017a). Prophage Rs551 and its repressor gene *orf14* reduce virulence and increase competitive fitness of its *Ralstonia solanacearum* carrier strain UW551. *Front. Microbiol.* 8:2480. doi: 10.3389/fmicb.2017.02480
- Ahmad, A. A., Stulberg, M. J., Mershon, J. P., Mollov, D. S., and Huang, Q. (2017b). Molecular and biological characterization of ϕ Rs551, a filamentous bacteriophage isolated from a race 3 biovar 2 strain of *Ralstonia solanacearum*. *PLoS One* 12:e0185034. doi: 10.1371/journal.pone.0185034

- Altschul, S. F., Gish, W., Miller, W., Myers, E. W., and Lipman, D. J. (1990). Basic local alignment search tool. *J. Mol. Biol.* 215, 403–410. doi: 10.1016/S0022-2836(05)80360-2
- Alvarez, B., and Biosca, E. G. (2017). Bacteriophage-based bacterial wilt biocontrol for an environmentally sustainable agriculture. *Front. Plant Sci.* 8:1218. doi: 10.3389/fpls.2017.01218
- Arndt, D., Grant, J. R., Marcu, A., Sajed, T., Pon, A., Liang, Y., et al. (2016). PHASTER: a better, faster version of the PHAST phage search tool. *Nucleic Acids Res.* 44, W16–W21. doi: 10.1093/nar/gkw387
- Askora, A., Kawasaki, T., Fujie, M., and Yamada, T. (2017). Lysogenic conversion of the phytopathogen *Ralstonia solanacearum* by the P2virus ϕ RSY1. *Front. Microbiol.* 8:2212. doi: 10.3389/fmicb.2017.02212
- Bhunchoth, A., Blanc-Mathieu, R., Mihara, T., Nishimura, Y., Askora, A., Phironrit, N., et al. (2016). Two jumbo phages, ϕ RSL2 and ϕ RSF1, infect *Ralstonia solanacearum* and show common features of ϕ KZ-related phages. *Virology* 494, 56–66. doi: 10.1016/j.virol.2016.03.028
- Bhunchoth, A., Phironrit, N., Leksomboon, C., Chatchawankanphanich, O., Kotera, S., Narulita, E., et al. (2015). Isolation of *Ralstonia solanacearum*-infecting bacteriophages from tomato fields in Chiang Mai, Thailand, and their experimental use as biocontrol agents. *J. Appl. Microbiol.* 118, 1023–1033. doi: 10.1111/jam.12763
- Blaha, B., Semsey, S., Ferenczi, S., Csiszovszki, Z., Papp, P. P., and Orosz, L. (2004). A proline tRNA(CGG) gene encompassing the attachment site of temperate phage 16-3 is functional and convertible to suppressor tRNA. *Mol. Microbiol.* 54, 742–754. doi: 10.1111/j.1365-2958.2004.04300.x
- Catalao, M. J., Gil, F., Moniz-Pereira, J., Sao-Jose, C., and Pimentel, M. (2013). Diversity in bacterial lysis systems: bacteriophages show the way. *FEMS Microbiol. Rev.* 37, 554–571. doi: 10.1111/1574-6976.12006
- Christie, G. E., and Calendar, R. (2016). Bacteriophage P2. *Bacteriophage* 6:e1145782. doi: 10.1080/21597081.2016.1145782
- Cianfanelli, F. R., Alcoforado, D. J., Guo, M., De Cesare, V., Trost, M., Coulthurst, S. J., et al. (2016). VgrG and PAAR Proteins define distinct versions of a functional type VI secretion system. *PLoS Pathog.* 12:e1005735. doi: 10.1371/journal.ppat.1005735
- Clarke, C. R., Studholme, D. J., Hayes, B., Runde, B., Weisberg, A., Cai, R., et al. (2015). Genome-enabled phylogeographic investigation of the quarantine pathogen *Ralstonia solanacearum* race 3 biovar 2 and screening for sources of resistance against its core effectors. *Phytopathology* 105, 597–607. doi: 10.1094/PHYTO-12-14-0373-R
- Dykstra, M. J. (1993). *A Manual of Applied Technique for Biological Electron Microscopy*. New York, NY: Plenum Press. doi: 10.1007/978-1-4684-0010-6
- Ellis, E. L., and Delbruck, M. (1939). The growth of bacteriophage. *J. Gen. Physiol.* 22, 365–384. doi: 10.1085/jgp.22.3.365
- Feeney, M. A., Chandra, G., Findlay, K. C., Paget, M. S. B., and Buttner, M. J. (2017). Translational control of the SigR-directed oxidative stress response in *Streptomyces* via IF3-mediated repression of a noncanonical GTC start codon. *mBio* 8:e00815-17. doi: 10.1128/mBio.00815-17
- Fegan, M., and Prior, P. (2005). “How complex is the *Ralstonia solanacearum* species complex?” in *Bacterial Wilt Disease and the Ralstonia solanacearum Species Complex*, eds C. Allen, P. Prior, and A. C. Hayward (Saint Paul, MN: APS Press), 449–461.
- Fokine, A., and Rossmann, M. G. (2014). Molecular architecture of tailed double-stranded DNA phages. *Bacteriophage* 4:e28281. doi: 10.4161/bact.28281
- Fujiwara, A., Fujisawa, M., Hamasaki, R., Kawasaki, T., Fujie, M., and Yamada, T. (2011). Biocontrol of *Ralstonia solanacearum* by treatment with lytic bacteriophages. *Appl. Environ. Microbiol.* 77, 4155–4162. doi: 10.1128/AEM.02847-10
- Fujiwara, A., Kawasaki, T., Usami, S., Fujie, M., and Yamada, T. (2008). Genomic characterization of *Ralstonia solanacearum* phage ϕ RSA1 and its related prophage (ϕ RSX) in strain GMI1000. *J. Bacteriol.* 190, 143–156. doi: 10.1128/JB.01158-07
- Gill, J. J., Sumner, E. J., Russell, W. K., Cologna, S. M., Carlile, T. M., Fuller, A. C., et al. (2011). Genomes and characterization of phages Bcep22 and BcepIL02, founders of a novel phage type in *Burkholderia cenocepacia*. *J. Bacteriol.* 193, 5300–5313. doi: 10.1128/JB.05287-11
- Halmillawewa, A. P., Restrepo-Córdoba, M., Perry, B. J., Yost, C. K., and Hynes, M. F. (2016). Characterization of the temperate phage vB_RleM_PPF1 and its site-specific integration into the *Rhizobium leguminosarum* F1 genome. *Mol. Genet. Genomics* 291, 349–362. doi: 10.1007/s00438-015-1113-8
- Harrison, C. J., and Langdale, J. A. (2006). A step by step guide to phylogeny reconstruction. *Plant J.* 45, 561–572. doi: 10.1111/j.1365-313X.2005.02611.x
- Hayes, M. M., MacIntyre, A. M., and Allen, C. (2017). Complete genome sequences of the plant pathogens *Ralstonia solanacearum* type strain K60 and *R. solanacearum* race 3 biovar 2 strain UW551. *Genome Announc.* 5:e01088-17. doi: 10.1128/genomeA.01088-17
- Hayward, A. C. (1991). Biology and epidemiology of bacterial wilt caused by *Pseudomonas solanacearum*. *Annu. Rev. Phytopathol.* 29, 65–87. doi: 10.1146/annurev.py.29.090191.000433
- Hendrix, R. W., Smith, M. C. M., Burns, R. N., Ford, M. E., and Hatfull, G. F. (1999). Evolutionary relationships among diverse bacteriophages and prophages: all the world's a phage. *Proc. Natl. Acad. Sci. U.S.A.* 96, 2192–2197. doi: 10.1073/pnas.96.5.2192
- Huang, Q., and Allen, C. (2000). Polygalacturonases are required for rapid colonization and full virulence of *Ralstonia solanacearum* on tomato plants. *Physiol. Mol. Plant Pathol.* 57, 77–83. doi: 10.1006/pmpp.2000.0283
- Kimura, M., Jia, Z. J., Nakayama, N., and Asakawa, S. (2008). Ecology of viruses in soils: past, present and future perspective. *Soil Sci. Plant Nutr.* 54, 1–32. doi: 10.1111/j.1747-0765.2007.00197.x
- Kropinski, A. M., Prangishvili, D., and Lavigne, R. (2009). Position paper: the creation of a rational scheme for the nomenclature of viruses of bacteria and archaea. *Environ. Microbiol.* 11, 2775–2777. doi: 10.1111/j.1462-2920.2009.01970.x
- Laemmli, U. K. (1970). Cleavage of structural proteins during the assembly of the head of bacteriophage T4. *Nature* 227, 680–685. doi: 10.1038/227680a0
- Liao, M. (2018). Genomic characterization of the novel *Ralstonia* phage RPSC1. *Arch. Virol.* 163, 1969–1971. doi: 10.1007/s00705-018-3713-1
- Lowe, T. M., and Eddy, S. R. (1997). tRNAscan-SE: a program for improved detection of transfer RNA genes in genomic sequence. *Nucleic Acids Res.* 25, 955–964. doi: 10.1093/nar/25.5.955
- Marsh, P., and Wellington, E. M. H. (1994). Phage-host interaction in soil. *FEMS Microbiol. Ecol.* 15, 99–108. doi: 10.1111/j.1574-6941.1994.tb00234.x
- Mihara, T., Nasr-Eldin, M. A., Chatchawankanphanich, O., Bhunchoth, A., Phironrit, N., Kawasaki, T., et al. (2016). A phage ϕ RP15 is closely related to and encodes 19 tRNA-related sequences. *Virol. Rep.* 6, 61–73. doi: 10.1016/j.virep.2016.07.001
- Murugaiyan, S., Bae, J. Y., Wu, J., Lee, S. D., Um, H. Y., Choi, H. K., et al. (2010). Characterization of filamentous bacteriophage PE226 infecting *Ralstonia solanacearum* strains. *J. Appl. Microbiol.* 110, 296–303. doi: 10.1111/j.1365-2672.2010.04882.x
- Park, T.-H. (2018). Complete genome sequence of DU_RP_II, a novel *Ralstonia solanacearum* phage of the family *Podoviridae*. *Arch. Virol.* 163, 269–271. doi: 10.1007/s00705-017-3577-9
- Roberts, D. P., Denny, T. P., and Schell, M. (1988). Cloning of the egl gene of *Pseudomonas solanacearum* and analysis of its role in pathogenicity. *J. Bacteriol.* 170, 1445–1451. doi: 10.1128/jb.170.4.1445-1451.1988
- Safni, I., Cleenwerck, I., De Vos, P., Fegan, M., Sly, L., and Kappler, U. (2014). Polyphasic taxonomic revision of the *Ralstonia solanacearum* species complex: proposal to emend the descriptions of *Ralstonia solanacearum* and *Ralstonia syzygii* and reclassify current *R. syzygii* strains as *Ralstonia syzygii* subsp. *syzygii* subsp. nov., *R. solanacearum* phylotype IV strains as *Ralstonia syzygii* subsp. *indonesiensis* subsp. nov., banana blood disease bacterium strains as *Ralstonia syzygii* subsp. *celebesensis* subsp. nov. and *R. solanacearum* phylotype I and III strains as *Ralstonia pseudosolanacearum* sp. nov. *Int. J. Syst. Evol. Microbiol.* 64, 3087–3103. doi: 10.1099/ijs.0.066712-0
- Sambrook, J., and Russell, D. W. (2001). *Molecular Cloning: A Laboratory Manual*, 3rd Edn. Cold Spring Harbor, NY: Cold Spring Harbor Laboratory Press.
- Shin, H., Lee, J. H., Yoon, H., Kang, D. H., and Ryu, S. (2014). Genomic investigation of lysogen formation and host lysis systems of the *Salmonella* temperate bacteriophage SPN9CC. *Appl. Environ. Microbiol.* 80, 374–384. doi: 10.1128/AEM.02279-13
- Shneider, M. M., Buth, S. A., Ho, B. T., Basler, M., Mekalanos, J. J., Leiman, P. G., et al. (2013). PAAR-repeat proteins sharpen and diversify the type VI secretion system spike. *Nature* 500, 350–353. doi: 10.1038/nature12453
- Sievers, F., Wilm, A., Dineen, D., Gibson, T. J., Karplus, K., Li, W., et al. (2011). Fast, scalable generation of high-quality protein multiple sequence alignments using Clustal Omega. *Mol. Syst. Biol.* 7:539. doi: 10.1038/msb.2011.75

- Stulberg, M. J., Shao, J., and Huang, Q. (2015). A multiplex PCR assay to detect and differentiate select agent strains of *Ralstonia solanacearum*. *Plant Dis.* 99, 333–341. doi: 10.1094/PDIS-05-14-0483-RE
- Su, J., Sun, H., Liu, J., Guo, Z., Fan, G., Gu, G., et al. (2017). Complete genome sequence of a novel lytic bacteriophage isolated from *Ralstonia solanacearum*. *Arch. Virol.* 162, 3919–3923. doi: 10.1007/s00705-017-3555-2
- Swofford, D. L. (2003). *PAUP*. Phylogenetic Analysis Using Parsimony (*and Other Methods). Version 4*. Sunderland, MA: Sinauer Associates.
- Thi, B. V. T., Khanh, N. H. P., Namikawa, R., Miki, K., Kondo, A., Thi, P. T. D., et al. (2015). Genomic characterization of *Ralstonia solanacearum* phage RS138 of the family *Siphoviridae*. *Arch. Virol.* 161, 483–486. doi: 10.1007/s00705-0152654-1
- Van, T. T. B., Yoshida, S., Miki, K., Kondo, A., and Kamei, K. (2014). Genomic characterization of ϕ RS603, a filamentous bacteriophage that is infectious to the phytopathogen *Ralstonia solanacearum*. *Microbiol. Immunol.* 58, 697–700. doi: 10.1111/1348-0421.12203
- Wicker, E., Grassart, L., Coranson-Beaudu, R., Mian, D., Guilbaud, C., Fegan, M., et al. (2007). *Ralstonia solanacearum* strains from Martinique (French west indies) exhibiting a new pathogenic potential. *Appl. Environ. Microbiol.* 73, 6790–6801. doi: 10.1128/AEM.00841-07
- Yamada, T., Kawasaki, T., Nagata, S., Fujiwara, A., Usami, S., and Fujie, M. (2007). New bacteriophages that infect the phytopathogen *Ralstonia solanacearum*. *Microbiology* 153, 2630–2639. doi: 10.1099/mic.0.2006/001453-0
- Yamada, T., Sato, S., Ishikawa, H., Fujiwara, A., Kawasaki, T., Fujie, M., et al. (2010). A jumbo phage infecting the phytopathogen *Ralstonia solanacearum* defines a new lineage of the Myovirus family. *Virology* 398, 135–147. doi: 10.1016/j.virol.2009.11.043

Conflict of Interest Statement: The authors declare that the research was conducted in the absence of any commercial or financial relationships that could be construed as a potential conflict of interest.

Copyright © 2019 Addy, Ahmad and Huang. This is an open-access article distributed under the terms of the Creative Commons Attribution License (CC BY). The use, distribution or reproduction in other forums is permitted, provided the original author(s) and the copyright owner(s) are credited and that the original publication in this journal is cited, in accordance with accepted academic practice. No use, distribution or reproduction is permitted which does not comply with these terms.

