



Academy of Scientific
Research & Technology



Journal of Genetic Engineering and Biotechnology

Vol. 16 No 1, 2018



HOSTED BY



ELSEVIER

Available online at www.sciencedirect.com

ScienceDirect

ISSN: 1687-157X

Journal of Genetic Engineering and Biotechnology

Editor-in-Chief: Mahmoud Saker

[View Editorial Board](#)

[Submit Your Paper](#)

[Open Access](#)

[View Articles](#)

[Guide for Authors](#)

[Abstracting/ Indexing](#)

[Track Your Paper](#)

[Journal Metrics](#)

- [CiteScore: 1.58 i](#)
- [Source Normalized Impact per Paper \(SNIP\): 0.993 i](#)
- [SCImago Journal Rank \(SJR\): 0.375 i](#)
- [View More on Journal Insights](#)

Your Research Data

- [Share your research data](#)
- [Visualize your data](#)

Society Links



أكاديمية البحث العلمي والتكنولوجيا
Academy of Scientific Research
and Technology

Related Links

- [Author Stats i](#)
- [Researcher Academy](#)
- [Author Services](#)
- [Try out personalized alert features](#)

Production and Hosting by Elsevier B.V. on behalf of Academy of Scientific Research and Technology

Peer Review under the responsibility of the National Research Center

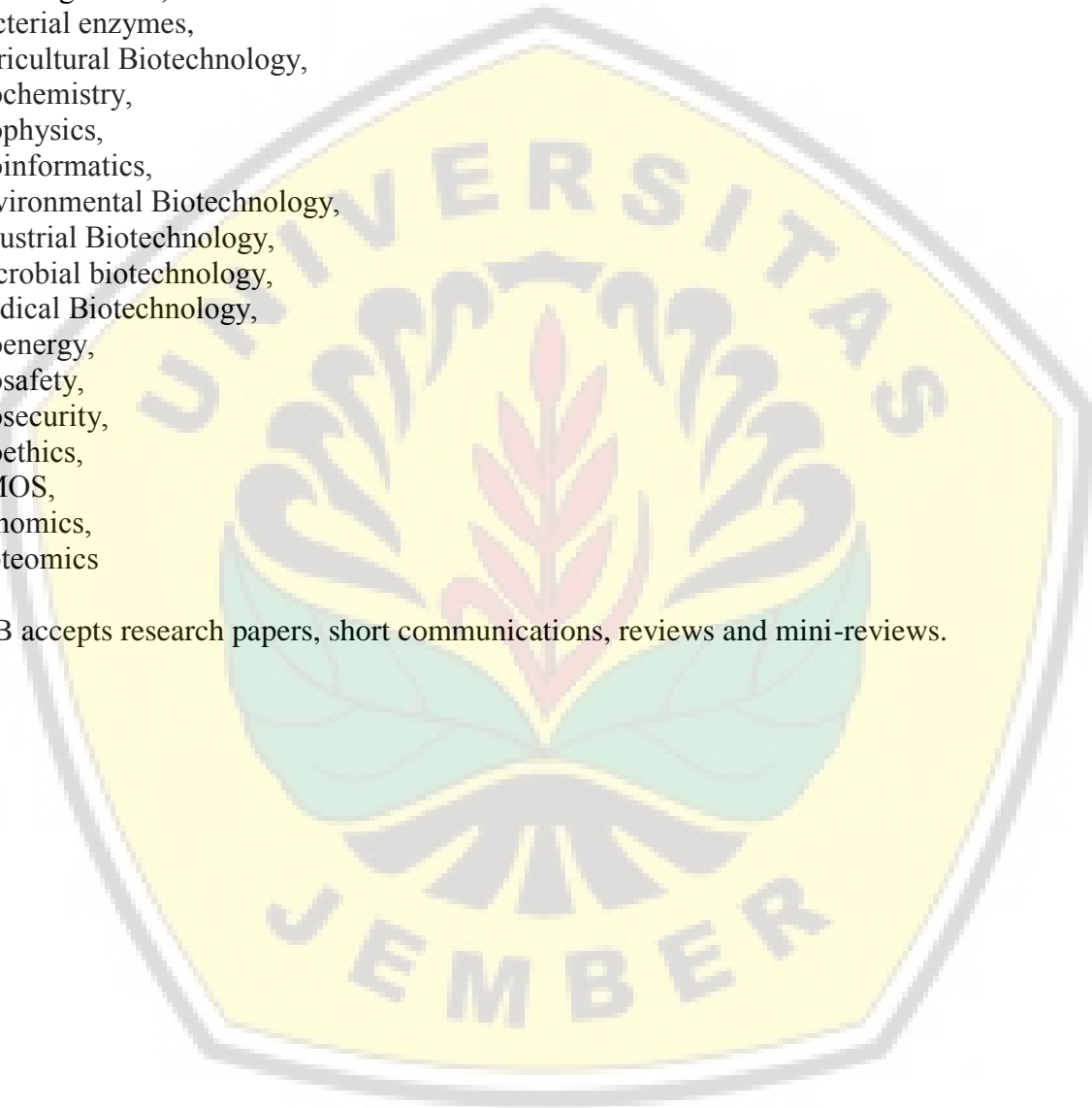
Digital Repository Universitas Jember

Journal of Genetic Engineering and Biotechnology is devoted to rapid publication of full-length research papers that lead to significant contribution in advancing knowledge in genetic engineering and biotechnology and provide novel perspectives in this research area. JGEB includes all major themes related to genetic engineering and recombinant DNA.

The areas of interest of JGEB include but not restricted to:

- Plant genetics,
- Animal genetics,
- Bacterial enzymes,
- Agricultural Biotechnology,
- Biochemistry,
- Biophysics,
- Bioinformatics,
- Environmental Biotechnology,
- Industrial Biotechnology,
- Microbial biotechnology,
- Medical Biotechnology,
- Bioenergy,
- Biosafety,
- Biosecurity,
- Bioethics,
- GMOS,
- Genomics,
- Proteomics

JGEB accepts research papers, short communications, reviews and mini-reviews.



Journal of Genetic Engineering and Biotechnology

Editorial Board

Editor-in-Chief

Mahmoud Saker

Academy of Scientific Research and Technology, National Research Center, Egypt

Deputy Editor

Sameh Soror

Dept. of Genetic & Biotechnology, Helwan University, Cairo, Egypt

Associate Editors

Yasser Abdel Fattah

City of Scientific Research and Technological Applications (SRTA-City), Egypt

Nabila Abdel Maksoud

National Research Center, Egypt

Desouky Abd-El-Haleem

City of Scientific Research and Technological Applications (SRTA-City), Egypt

Adel Abolesoud

The Agricultural Research Center, Egypt

Ahlam Abou Mossallam

National Research Center, Egypt

Mai Allam

National Research Center, Egypt

Shireen Assem

Agricultural Genetic Engineering Research Institute, Egypt

Abdel Fattah Badr

Helwan University, Egypt

Mahmoud Bahgat

National Research Center, Egypt

Danila Carbonara

Università degli Studi di Pavia, Italy

Sherif El-Khamisy

Zewail City of Science and Technology, Egypt

Ahmed Gaballa

Cornell University, USA

Yehia Zakaria Gad

National Research Center, Egypt

Reda Gafaar

Tanta University, Egypt

Hassan Ghareeb

National Research Center, Egypt

Anil Grover

University of Delhi South Campus, India

Digital Repository Universitas Jember

Nada Hamza

Commission of Genetic Engineering & Biotechnology, Sudan

Moemen Hanafy

National Research Center, Egypt

Harrison Hughes

Colorado State University, USA

Yehia Mahumoud

Tanta University, Egypt

Hanan Malkawi

Hamdan Bin Mohammed Smart University, United Arab Emirates

Osman El-Mahdy Osman

National Research Center, Egypt

Mohamed Rady

National Research Center, Egypt

Hala Ragab

National Research Center, Egypt

Ewald Schnug

Julius Kühn-Institut, Germany

Mohamed Shaba

Colorado State University, USA

Michel Smith

Kansas State University, USA



Volume 16, Issue 2

Pages 239-776 (December 2018)

Microbial/industrial Biotechnology

Review article Open access

[Quorum sensing intervened bacterial signaling: Pursuit of its cognizance and repression](#)

Kayeen Vadakkan, Abbas Alam Choudhury, Ramya Gunasekaran, Janarthanam Hemapriya, Selvaraj Vijayanand

Pages 239-252

Short communication Open access

[Phylogenetic diversity and biotechnological potentials of marine bacteria from continental slope of eastern Arabian Sea](#)

Arakkaveettil Kabeer Farha, Thasneem TR, Aswathy Purushothaman, Jaseetha Abdul Salam, Abdulla Mohamed Hatha

Pages 253-258

Research article Open access

[Valorisation of chicken feathers for xanthan gum production using *Xanthomonas campestris* MO-03](#)

Murat Ozdal, Esabi Basaran Kurbanoglu

Pages 259-263

Research article Open access

[Biolytic extraction of poly\(3-hydroxybutyrate\) from *Bacillus megaterium* Ti3 using the lytic enzyme of *Streptomyces albus* Tia1](#)

Neetu Israni, Surabhi Thapa, Srividya Shivakumar

Pages 265-271

Research article Open access

[Purification and characterization of alkaline soda-bleach stable protease from *Bacillus* sp. APP-07 isolated from Laundromat soil](#)

I.K. Shaikh, P.P. Dixit, T.M. Shaikh

Pages 273-279

Research article Open access

[Improvement of cellulose degradation by cloning of endo- \$\beta\$ -1, 3-1, 4 glucanase \(*bgl*s\) gene from *Bacillus subtilis* BTN7A strain](#)

Wafaa K. Hegazy, Mohamed S. Abdel-Salam, Azhar A. Hussain, Hoda H. Abo-Ghalia, Safa S. Hafez

Pages 281-285

Research article Open access

[Antibacterial activity of soil bacteria isolated from Kochi, India and their molecular identification](#)

Davis Gislin, Dorairaj Sudarsanam, Gnanaprakasam Antony Raj, Kathirvelu Baskar

Pages 287-294

Research article Open access

[Purification and characterization of alkaline protease with novel properties from *Bacillus cereus* strain S8](#)

B.K.M Lakshmi, D. Muni Kumar, K.P.J Hemalatha

Pages 295-304

Research article Open access

[Enhancement of nematocidal potential through cloning and expression of *chitinase* gene from *Bacillus subtilis* subsp. *Subtilis* BTN7A strain](#)

Mohamed S. Abdel-Salam, Hoda H. Ameen, Abdallah S.M. Kassab, Ahmed E.A. Mahgoob, Usama S. Elkelany

Pages 305-310

Research article Open access

[Biodegradation of feather waste by keratinase produced from newly isolated *Bacillus licheniformis* ALW1](#)

Azza M. Abdel-Fattah, Mamdouh S. El-Gamal, Siham A. Ismail, Mohamed A. Emran, Amal M. Hashem

Pages 311-318

Research article Open access

[Study on the potential of cold-active lipases from psychrotrophic fungi for detergent formulation](#)

Sanjay Sahay, Deepak Chouhan

Pages 319-325

Research article Open access

[Optimization of novel halophilic lipase production by *Fusarium solani* strain NFCCL 4084 using palm oil mill effluent](#)

Kiptoo Geoffry, Rajeshwara N. Achur

Pages 327-334

Research article Open access

[Cloning and expression of MPT83 gene from *Mycobacterium tuberculosis* in *E. coli* BL21 as vaccine candidate of tuberculosis: A preliminary study](#)

Ahyar Ahmad, Rosana Agus, Muh. Nasrum Massi, Rosdiana Natzir, ... Masugi Maruyama

Pages 335-340

Research article Open access

[Immobilization of thermostable exo-inulinase from mutant thermophilic *Aspergillus tamarii*-U4 using kaolin clay and its application in inulin hydrolysis](#)

Emmanuel O. Garuba, Abiodun, A. Onilude

Pages 341-346

Research article Open access

[High level expression and purification of recombinant flounder growth hormone in *E. coli*](#)

Tae-Jin Choi, Temesgen Tola Geletu

Pages 347-355

Research article Open access

[Screening of potential probiotic lactic acid bacteria and production of amylase and its partial purification](#)

Tallapragada Padmavathi, Rayavarapu Bhargavi, Purushothama Rao Priyanka, Naige Ranganath Niranjana, Pogakul Veerabhadrapa Pavitra

Pages 357-362

Research article Open access

[Partial purification and characterization of exoinulinase produced from *Bacillus* sp.](#)

R. Ramapriya, A. Thirumurugan, T. Sathishkumar, D.R. Manimaran

Pages 363-367

Research article Open access

[Effect of vitamins and cell constructions on the activity of microbial fuel cell battery](#)

Dena Z. Khater, K.M. El-Khatib, Rabeay Y.A. Hassan

Pages 369-373

Research article Open access

[Decolorization of Textile Reactive Dyes by Bacterial Monoculture and Consortium Screened from Textile Dyeing Effluent](#)

Md. Ekramul Karim, Kartik Dhar, Md. Towhid Hossain

Pages 375-380

Research article Open access

[Optimization of quorum quenching mediated bacterial attenuation of *Solanum torvum* root extract by response surface modelling through Box-Behnken approach](#)

Kayeen Vadakkan, Selvaraj Vijayanand, Abbas Alam Choudhury, Ramya Gunasekaran, Janarthanam Hemapriya

Pages 381-386

Research article Open access

[Isolation and characterization of *Bacillus* sp. strain BC01 from soil displaying potent antagonistic activity against plant and fish pathogenic fungi and bacteria](#)

Md Javed Foysal, Asura Khanam Lisa

Pages 387-392

Research article Open access

[Expression of *Leptospira* membrane proteins Signal Peptidase \(SP\) and *Leptospira* Endostatin like A \(Len A\) in BL-21\(DE3\) is toxic to the host cells](#)

Padikara K. Satheshkumar, Prasanna V. Anu, Mohamed I. Junaida, Madathiparambil G.

Madanan, ... Perumana R. Sudhakaran

Pages 393-398

Research article Open access

[Scenedesmus obliquus: Antioxidant and antiviral activity of proteins hydrolyzed by three enzymes](#)

Abd El-Moneim M.R. Afify, Gamal S. El Baroty, Farouk K. El Baz, Hanaa H. Abd El Baky, Soha A. Murad
Pages 399-408

Research article Open access

[Statistical optimization of crude oil bio-degradation by a local marine bacterium isolate Pseudomonas sp. sp48](#)

Soha Farag, Nadia A. Soliman, Yasser R. Abdel-Fattah
Pages 409-420

Research article Open access

[Influence of bioprocess variables on the production of extracellular chitinase under submerged fermentation by Streptomyces pratensis strain KLSL55](#)

A. Shivalee, K. Lingappa, Divatar Mahesh
Pages 421-426

Review article Open access

[Recent advances in stem cells therapy: A focus on cancer, Parkinson's and Alzheimer's](#)

Dalia Fleifel, Mai Atef Rahmoon, Abdelrahman AIOkda, Mostafa Nasr, ... Sherif F. El-Khamisy
Pages 427-432

Research article Open access

[In vitro differentiation of human multilineage differentiating stress-enduring \(Muse\) cells into insulin producing cells](#)

Ali M. Fouad, Mahmoud M. Gabr, Elsayed K. Abdelhady, Mahmoud M. Zakaria, ... Ayman F. Refaie
Pages 433-440

Research article Open access

[Development and evaluation of latex agglutination test coating with recombinant antigen, LipL32 for serodiagnosis of human leptospirosis](#)

Kotchakorn Thongsukkaeng, Rerngwit Boonyom
Pages 441-446

Research article Open access

[PNME – A gene-gene parallel network module extraction method](#)

Bikash Jaiswal, Kumar Utkarsh, D.K. Bhattacharyya
Pages 447-457

Research article Open access

[Expression, purification and biological characterisation of recombinant human irisin \(12.5 kDa\)](#)

Kalpana Panati, Venkata Ramireddy Narala, Vydyanath R. Narasimha, Madhavi Derangula, ... Suneetha Yeguvapalli

Pages 459-466

Research article Open access

[Increased level of B cell differentiation factor in systemic lupus erythematosus patients](#)

Hala Zaki Raslan, Hiba Sibaii, Salwa Refat El- Zayat, Hagar Hassan, Mahitab El- Kassaby
Pages 467-471

Research article Open access

[Healthcare-associated \(HA\) and community-associated \(CA\) methicillin resistant *Staphylococcus aureus* \(MRSA\) in Bangladesh – Source, diagnosis and treatment](#)

Md. Anowar Khasru Parvez, Rabeya Nahar Ferdous, Md. Shahedur Rahman, Sohedul Islam
Pages 473-478

Research article Open access

[Assessment of Ki-67 as a potential biomarker in patients with breast cancer](#)

Halla Mohamed Ragab, Nervana Samy, Mie Afify, Nabila Abd El Maksoud, HebatAllah Mohamed Shaaban
Pages 479-484

Research article Open access

[Kolaviron and selenium reduce hydrogen peroxide-induced alterations of the inflammatory response](#)

Tebekeme Okoko
Pages 485-490

Animal Biotechnology

Research article Open access

[Feline panleukopenia viral infection in cats: Application of some molecular methods used for its diagnosis](#)

Romane A. Awad, Wagdy K.B. Khalil, Ashraf G. Attallah
Pages 491-497

Research article Open access

[Buffalo species identification and delineation using genetic barcoding markers](#)

Amal Ahmed Mohamed Hassan, Esraa Aly Balabel, Hanaa Abdel Sadek Oraby, Samy Anwar Darwish
Pages 499-505

Research article Open access

[Detection of myostatin gene MSTN in some goat breeds \(*Capra hircus*\)](#)

Y.A. Dowidar, M.A. El-Sayed, Aly M. Elrefy, Hytham E. Shoura
Pages 507-512

Research article Open access

[Five BoLA-DRB3 genotypes detected in Egyptian buffalo infected with Foot and Mouth disease virus serotype O](#)

Othman E. Othman, Muhammad G. Khodary, Ayman H. El-Deeb, Hussein A. Hussein
Pages 513-518

Research article Open access

[Cytogenetic effects of silver and gold nanoparticles on *Allium cepa* roots](#)

Priyanka Debnath, Arghadip Mondal, Amita Hajra, Chittaranjan Das, Naba Kumar Mondal
Pages 519-526

Research article Open access

[Synthesis of silver nanoparticles by *Bacillus clausii* and computational profiling of nitrate reductase enzyme involved in production](#)

Koel Mukherjee, Rashmi Gupta, Gourav Kumar, Sarita Kumari, ... Padmini Padmanabhan
Pages 527-536

Plant Biotechnology

Review article Open access

[Transgenic approaches for genetic improvement in groundnut \(*Arachis hypogaea* L.\) against major biotic and abiotic stress factors](#)

Saikat Gantait, Suwendu Mondal
Pages 537-544

Review article Open access

[In vitro biotechnological advancements in Malabar nut \(*Adhatoda vasica* Nees\): Achievements, status and prospects](#)

Saikat Gantait, Jitendriya Panigrahi
Pages 545-552

Review article Open access

[Elevated carotenoids in staple crops: The biosynthesis, challenges and measures for target delivery](#)

Adebanjo Ayobamidele Badejo
Pages 553-562

Review article Open access

[In vitro culture, transformation and genetic fidelity of Milk Thistle](#)

M.R. Rady, M.M. Saker, M.A. Matter
Pages 563-572

Research article Open access

[Cloning, transformation and expression of cell cycle-associated protein kinase *OsWee1* in indica rice \(*Oryza sativa* L.\)](#)

Frengky H.H. Prasetyo, Bambang Sugiharto, Netty Ermawati
Pages 573-579

Research article Open access

[Optimization of indole acetic acid production by isolated bacteria from *Stevia rebaudiana* rhizosphere and its effects on plant growth](#)

Sheela Chandra, Kazim Askari, Madhumita Kumari

Pages 581-586

Research article Open access

[Plant regeneration, developmental pattern and genetic fidelity of somatic embryogenesis derived *Musa* spp.](#)

Natarajan Nandhakumar, Krish Kumar, Duraijalagaraja Sudhakar, K. Soorianathasundaram

Pages 587-598

Research article Open access

[Population structure, morphological and genetic diversity within and among melon \(*Cucumis melo* L.\) landraces in Iran](#)

Masoud Maleki, Abdolali Shojaeiyan, Sajad Rashidi Monfared

Pages 599-606

Research article Open access

[Influence of cold pretreatment on shoot regeneration from callus in date palm \(*Phoenix dactylifera* L.\) cv. 'Barhee'](#)

Ahmed Madi Waheed Al-Mayahi, Abdulminam Hussien Ali, Hussein J. Shareef

Pages 607-612

Research article Open access

[Screening of plant growth promoting traits in heavy metals resistant bacteria: Prospects in phytoremediation](#)

N. Tirry, N. Tahri Joutey, H. Sayel, A. Kouchou, ... N. El Ghachtouli

Pages 613-619

Research article Open access

[Phytochemical analysis, antioxidant and antimicrobial activity of wild and *in vitro* derived plants of *Ceropegia thwaitesii* Hook – An endemic species from Western Ghats, India](#)

S. Muthukrishnan, T. Senthil Kumar, A. Gangaprasad, F. Maggi, M.V. Rao

Pages 621-630

Research article Open access

[Molecular diversity of internal transcribed spacer among the monoconidial isolates of *Magnaporthe oryzae* isolated from rice in Southern Karnataka, India](#)

D. Jagadeesh, M.K. Prasanna Kumar, R. Chandrakanth, N.S. Devaki

Pages 631-638

Research article Open access

[Production of biomass and flavonoid of *Gynura procumbens* \(Lour.\) Merr shoots culture in temporary immersion system](#)

Ayu Dewi Pramita, Alfinda Novi Kristanti, Sugiharto, Edy Setiti Wida Utami, Yosephine Sri Wulan Manuhara
Pages 639-643

Research article Open access

[Callus mediated shoot organogenesis and regeneration of cytologically stable plants of *Ledebouria revoluta*: An ethnomedicinal plant with promising antimicrobial potency](#)

Sk Moquammel Haque, Avijit Chakraborty, Biswajit Ghosh
Pages 645-651

Research article Open access

[Evaluation of the alleviative role of *Chlorella vulgaris* and *Spirulina platensis* extract against ovarian dysfunctions induced by monosodium glutamate in mice](#)

Sekena H Abdel-Aziem, Heba A.M. Abd El-Kader, Faten M. Ibrahim, Hafiza A Sharaf, Aida I. El makawy

Pages 653-660

Research article Open access

[Assessment of genetic diversity in *Salvadora persica* L. based on inter simple sequence repeat \(ISSR\) genetic marker](#)

Mohammad Asadi Monfared, Davood Samsampour, Gholam Reza Sharifi-Sirchi, Fatemeh Sadeghi

Pages 661-667

Research article Open access

[Micropropagation protocol for *Antigonon leptopus* an important ornamental and medicinal plant](#)

Zenna Fawzia Ghareeb, Lobna S. Taha

Pages 669-675

Research article Open access

[Total phenolic and flavonoid contents and antioxidant activity of ginger \(*Zingiber officinale* Rosc.\) rhizome, callus and callus treated with some elicitors](#)

Ammar Mohammed Ahmed Ali, Mawahib ElAmin Mohamed El-Nour, Sakina Mohamed Yagi
Pages 677-682

Research article Open access

[Physiological and molecular studies on the effect of gamma radiation in fenugreek \(*Trigonella foenum-graecum* L.\) plants](#)

Rania Samy Hanafy, Samia Ageeb Akladius
Pages 683-692

Research article Open access

[Rice straw fermentation by *Schizophyllum commune* ARC-11 to produce high level of xylanase for its application in pre-bleaching](#)

Archana Gautam, Amit Kumar, Amit Kumar Bharti, Dharm Dutt
Pages 693-701



Original Article

Cloning, transformation and expression of cell cycle-associated protein kinase *OsWee1* in indica rice (*Oryza sativa* L.)Frengky H.H. Prasetyo^a, Bambang Sugiharto^b, Netty Ermawati^{c,*}^a Graduate School of Biotechnology Department, Jember University, JL. Kalimantan 37 Kampus Tegalboto, Jember 68121, Indonesia^b Center for Development of Advanced Sciences and Technology, and Department of Biology, Faculty of Mathematic and Natural Sciences, Jember University, JL. Kalimantan 37 Kampus Tegalboto, Jember 68121, Indonesia^c Department of Agricultural Production, and Central Laboratory for Biosciences, State Polytechnic of Jember, JL. Mastrip PO Box 164, Jember 68120, Indonesia

ARTICLE INFO

Article history:

Received 1 June 2018

Received in revised form 23 September 2018

Accepted 1 October 2018

Available online 7 December 2018

Keywords:

Agrobacterium

Cell cycle

Gene transformation

OsWee1

Protein kinase

Transgenic rice

ABSTRACT

The development process of seed in plants is a cycle of cells which occur gradually and regularly. One of the genes involved in controlling this stage is the *Wee1* gene. *Wee1* encode protein kinase which plays an important role in phosphorylation, inactivation of cyclin-dependent kinase 1 (CDK1)-cyclin (CYC) and inhibiting cell division at mitotic phase. The Overexpression of *Wee1* leads to delaying entry into mitotic phase, resulting in enlargement of cell size due to suppression of cell division. Accordingly, the cloning and overexpressing of *Wee1* in rice plant is important aim of this research in achieving better quantity and quality of future rice. The main objective of this present study is to cloning and generate transgenic rice plants overexpressing of *Wee1* gene. *Wee1* was isolated from cDNA of indica rice (*Oryza sativa*), called *OsWee1*. The full length of *OsWee1* was 1239 bp in size and successfully inserted into plant expression vector pRI101ON. Seven-day-old rice seedlings were prepared for transformation of *OsWee1* gene using Agrobacterium-mediated transformation method. Four positive transgenic lines were identified through the presence of kanamycin resistance gene (*nptII*) using genomic PCR analysis. Southern blot analysis result provides evidence that four independent rice transformants contained one to three rearranged transgene copies. Further screening in transgenic rice generation is needed in order to obtain stable expression of *OsWee1*.

© 2018 Production and hosting by Elsevier B.V. on behalf of Academy of Scientific Research & Technology. This is an open access article under the CC BY-NC-ND license (<http://creativecommons.org/licenses/by-nc-nd/4.0/>).

1. Introduction

One of the parameters to increase the yield of rice is the seed sizes, which regulated by the seed development processes after pollination. The process is a part of cell cycle which occur gradually and regularly during its life cycle. The cycle is divided into four phases, the mitotic (M) phase which includes mitosis and cytokinesis, G1 (first gap) phase, S (synthesis) phase, and G2 (second gap) phase. The cell develops larger in the G1 phase, then in S phase, cell replicates the chromosome inside the cell. Furthermore, the cell will continue its growth in G2 phase, and divided. The daughter cells can repeat the cycle [1]. The cell cycle progression is controlled at distinct checkpoints which major checkpoints are synthesis phase (G1-S checkpoint), mitosis (G2-M checkpoint) and the spindle checkpoint [2].

In eukaryotes, the cell cycle is controlled by family of conserved cyclin-dependent protein kinases (CDKs). The activity of CDK fluctuates regularly during the cell cycle, triggering important processes [3]. Phosphorylation and dephosphorylation of the CDK catalytic subunit, threonine 14 and tyrosine 15, are able to regulate and determine the timing of G2 and mitosis [4]. Previous study reported that phosphorylation of CDKs at tyrosine 15 in *Schizosaccharomyces pombe* is mediated by *Wee1*, which causes a delay in mitosis by phosphorylating the M-phase promoting factor on tyrosine 15 [5].

Wee1 is a gene encoding protein kinase located in the nucleus. The expression of this gene in plants is strongly induced by DNA damage which can be caused by radiation, ionization, chemicals and other stresses [6,7]. When DNA is damaged, ataxia-telangiectasia mutated (ATM) or ATM- and Rad3-related (ATR) kinases will be expressed depending on the genotoxic type of stress. Furthermore, the ATM and ATR signals will phosphorylate and activated Chk1 and further phosphorylates the *Wee1*. Activation of Chk1 caused cell cycle delay in G2-M phase by increasing *Wee1* regulation and decreasing regulation of phosphatase (Cdc25) which

Peer review under responsibility of National Research Center, Egypt.

* Corresponding author.

E-mail address: netty@polije.ac.id (N. Ermawati).<https://doi.org/10.1016/j.jgeb.2018.10.003>

1687-157X/© 2018 Production and hosting by Elsevier B.V. on behalf of Academy of Scientific Research & Technology.

This is an open access article under the CC BY-NC-ND license (<http://creativecommons.org/licenses/by-nc-nd/4.0/>).

controls tyrosine-15 phosphorylation inhibitors on cyclin-dependent kinase (Cdc25) resulting in G2 phase arrest [8–10].

In fission yeast (*S. pombe*), loss of *Wee1* activity causes insufficient growth cells early enter to mitosis phase and cytokinesis, therefore it causes cells to produce two abnormally small daughter cells [5,11]. However, increasing expression of *Wee1* causes delayed entry into mitosis and increase in cell size, this indicates that the activity levels of *Wee1* plays a role in ensuring the entry time of the mitotic phase and having strong effect on cell size [12]. Sun et al. [13] reported that expression of *ZmWee1* was observed in endosperm tissue at 15 day after pollination, where this gene shows its role in endoreduplication in the endosperm and supposes to be a potential regulator of seed development. The similar result was reported in *Wee1* tomato [14] and *AtWee1* from Arabidopsis [15], that the expression levels of *Wee1* gene was found higher in the generative organs such as seed, fruit and flower compared to that the vegetative organs. In previous study, the expression of rice *OsWee1* was almost found in all the tissues; roots, stem, tiller, flowers, leaves and seeds. The highly expression of rice *OsWee1* was found in 5 day after pollination of the seeds [16]. These results revealed that besides having an important role in seed developments, *Wee1* has also influence in the growth and developments of plants.

Considering the important role of *Wee1* in the development of seed, cloning and transformation of *OsWee1* was conducted in order to have understanding of the superior potential of *OsWee1* overexpressing in rice. In this study, we present results of *OsWee1* cloning and overexpression of this gene in rice.

2. Materials and methods

2.1. Plant materials

The mature seeds of indica rice (cv. Mekongga) were used in this research. Dehulled seeds were sterilized with 70% ethanol for 2 min followed by 5.25% sodium hypochlorite for 10 min and then washing with sterile distilled water for 3–5 times. The sterilized seeds were placed on MS basal salt media (Table 1) pH 5.8, supplemented with 3% (w/v) sucrose, 100 mg/L L-glutamine, 0.25% phytigel, and cultured under continuous light at $\pm 22^\circ\text{C}$ within a period of 7 days.

2.2. Plasmid construct

Cloning of *OsWee1* consists of 2 steps, first step was cloning *OsWee1* into pGEMT easy vector (Promega), and the second was

Table 1
MS basal salt media content (in mg/L media).

Components	mg/L
NH ₄ NO ₃	1650.0
KNO ₃	1900.0
MgSO ₄ ·7H ₂ O	370.0
MnSO ₄ ·4H ₂ O	22.3
ZnSO ₄	10.6
CuSO ₄ ·5H ₂ O	0.025
CaCl ₂ ·H ₂ O	440.0
KI	0.83
CoCl ₂ ·6H ₂ O	0.025
KH ₂ PO ₄	170.0
H ₃ BO ₃	6.2
Na ₂ MoO ₄ ·2H ₂ O	0.25
FeSO ₄ ·7H ₂ O	27.85
Na ₂ EDTA·2H ₂ O	37.25
Nicotinic acid	0.5
Pyridoxine HCl	0.5
Thiamine HCl	1.0
Glycine	2.0

cloned into plant expression vector pRI101ON vector (TaKaRa) (Fig. 1A). The amplification fragment of *OsWee1* was conducted from DNA recombinant pGEMT:*OsWee1* which obtained from previous study [16] and deposited in GeneBank under Accession no. KX758541. PCR analysis were performed using the following a set of primer contain *NdeI* and *BamHI* sites (Table 2) overhang to ensure compatibility with pRI101ON vector. The fragment of *OsWee1* was amplified as follows PCR Core Kit (Roche) manufacture's procedure, initial denaturation at 94 °C for 2 min, each with 25 cycles of denaturation at 94 °C for 15 sec, annealing at 57 °C for 20 sec, extension at 72 °C for 2 min, and a final extension at 72 °C for 7 min. Fragment obtained was then purified using GeneAll Expin[™] Combo GP and quantified using nanodrop (NanoVue Plus spectrophotometer, BioLab). The DNA fragment of *OsWee1* was ligated into pRI101ON and the recombinant pRI101ON:*OsWee1* was then transformed into *E. coli* XL10 gold competent cells through heat shock method [15].

2.3. Flanking analysis of *OsWee1*

A recombinant of pRI101ON:*OsWee1* was amplified and confirm the correct size by digestion using *HindIII*, *EcoRI*, *NdeI* and *BamHI* restriction enzymes (NEBr Inc.). The flanking frame of *OsWee1* in pRI101ON was checked and analyzed using Sanger dideoxy sequencing technology (The 1st BASE, Malaysia). The sequence was then analyzed using BLAST (www.ncbi.nlm.nih.gov/blast).

2.4. Transformation into *Agrobacterium*

DNA recombinant of pRI101ON:*OsWee1* was transferred into *Agrobacterium* cells by heat shock method [17]. Aliquot of 100 μL freshly prepared competent cells and 1 μL of DNA recombinant were mixed, keep on ice for 5 min and chilled into liquid nitrogen. Heat shock was immediately conducted by heated at 42 °C in waterbath for 90 sec. Added 1 ml of YEP medium (10 g/L yeast extract, 10 g/L peptone, 5 g/L NaCl₂) and gently shaken at 28 °C for 1 h to allow bacteria and harboring DNA replication. Cultured bacteria was then collected by centrifuge at 5000 rpm for 3 min, collected pellet was dissolved and spread on YEP agar medium supplement with 50 mg/L kanamycin, 100 mg/L rifampicin and 12.5 mg/L gentamicin. The bacteria cells were incubated at 28 °C for 2 d and the colony grown was identified using PCR with several specific primers (Table 2).

2.5. *Agrobacterium*-mediated transformation and putative rice transformants selection

The *Agrobacterium* harboring the binary construct pRI101ON:*OsWee1* was inoculated in YEP medium supplemented with 100 mg/L rifampicin, 12.5 mg/L gentamicin and 50 mg/L kanamycin, then incubate at 28 °C by gently shake at 110 rpm for 48 h. The growth of *Agrobacterium* was checked for its optical density by spectrophotometer ($\text{OD}_{600\text{nm}} = 0.3$). Seven-day-old rice seedlings were soaked in the *Agrobacterium* suspension for 20 min. To reduce the growth of excessive bacteria, the infected seedlings were dried using sterilized filter papers for 5 min. The infected seedlings were grown into co-cultivation medium (MS basal salt (Table 1), 3% sucrose, 100 mg/L acetosyringone, 0.3% phytigel; pH 5.2) and incubated for 2 d in the dark condition. The co-cultivated rice seedlings were thoroughly washed with 500 mg/L cefotaxime followed by sterilized water for three times. Furthermore, the seedlings were cultured on selection medium (MS basal salt, 3% sucrose, 0.25% phytigel, 50 mg/L kanamycin and 250 mg/L cefotaxime; pH 5.8) under a 16/8-h (day/night) light cycle at 22 °C and periodically sub-cultured every 4 weeks into fresh media. The screening

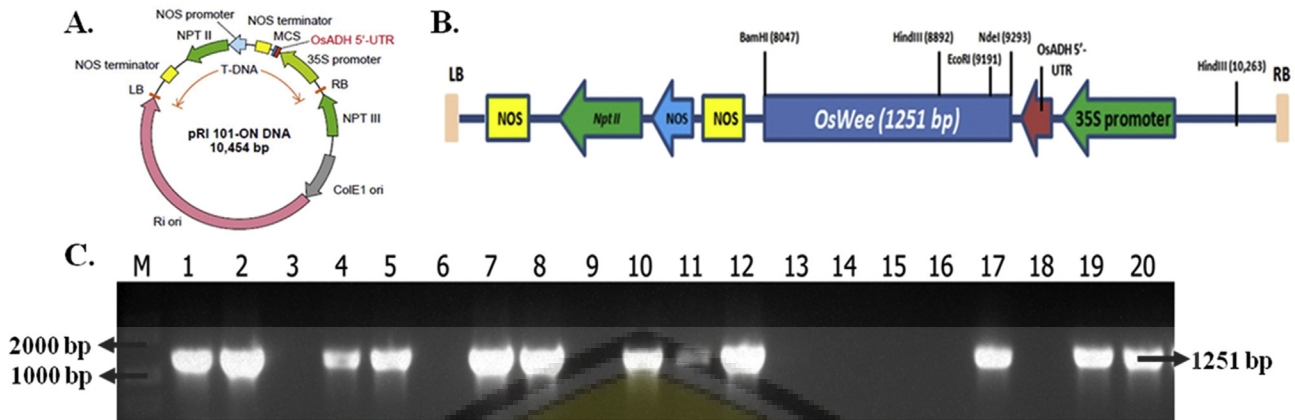


Fig. 1. Cloning *OsWee1* into expression vector pRI101ON. A. A Map of pRI101ON vector; B. Schematic representation of pRI101ON::*OsWee1* construct; C. Colony PCR analysis of *OsWee1* amplified using 146-FNdeI and 147-RBamHI primers.

Table 2

List of primers used in this study and corresponding sequences.

Primer name	Sequence (5'-3')	GC content (%)
OsWee-F	ATGGCACTTGGAAATTAGTTGTGGTC	44.0
OsWee-R	TTATCGTGGCAAACCACTGAGG	47.8
Fndel	GCCATATGGCACTTGGAAATTAGTTGT	42.3
RBamHI	GCGGATCCTTATCGTGGCAAACCAA	52.0
CaMV-F	GAAGACGTTCCAACCACG	55.6
RV-F	CAGGAAACAGCTATGACC	50.0
nptII-F	GTCATCTCACTTGCTCTGGCC	59.1
nptII-R	GTCGCTTGGTCGGTCAITTCG	57.1
OsActin-F	TCCATCTGGCATCTCTCAG	50.0
OsActin-R	GTACCCGCATCAGGCATC	61.1

putative transformants were conducted by screening of rice explants on the selection media containing 50 mg/L kanamycin.

2.6. Molecular analysis of putative transformed plants by PCR and Southern blotting

Genomic DNA was isolated from 4 g of leaves of *wildtype* and putative transformants rice [18] with minor modification. To confirm the presence of transgene, the putative transformants and non-transformant rice samples were analyzed by PCR analysis using nptII-F and nptII-R primers (Table 2). About 50–100 ng of total genomic DNA from independent putative transformant lines and non-transformant were mixed with 50 µl of reaction mix (KAPA Taq Extra HotStart ReadyMix) and subjected for PCR analysis under pre-denaturation condition at 95 °C for 3 min, followed by 30 cycles at 95 °C for 30 sec, 58 °C for 30 sec, 72 °C for 1 min and a final extension at 72 °C for 5 min. The results were visualized by loading on 1% (w/v) agarose gel electrophoresis.

Southern blot analysis was performed by method previously described [19]. Twenty µg of the genomic DNA was digested with the restriction enzymes *BamHI* (Promega) at 37 °C overnight. The digested DNA was separated on a 1% agarose gel and shifted to an Amersham Hybond N+ membrane (GE Healthcare, UK) using capillary transfer. The membrane was hybridized with a DIG-labelled DNA probe (Roche, Germany) and incubated overnight at 42 °C with gentle agitation. The DNA probe was prepared by amplification of pRI101ON::*OsWee1* by PCR using FNdeI and RBamHI primers and the PCR product was then labelled with DIG. The processes of probe preparation and washing of the membrane to remove the unbound probe were performed according to the manufacturer's instructions (Roche). Hybridization was visualized by exposing the membrane to X-ray (Fuji Film).

2.7. RNA isolation and reverse transcriptase PCR (RT-PCR)

The total RNA was isolated from 100 mg of young leaves of putative transformant lines and non-transformant 30-day-old rice plants using RNeasy pure plant kit (Qiagen, Beijing). The first-strand cDNA was prepared from 1 µg of total RNA using iScript™ cDNA Synthesis Kit (BIO-RAD) according to the manufacturer's instructions. The synthesized cDNA was then used as template to check the expression of *OsWee1* using OsWee-F and OsWee-R primers (Table 2). The RT-PCR conditions were 95 °C for 3 min, followed by 25 cycles at 95 °C for 30 sec, 56 °C for 30 sec, 72 °C for 1 min and a final extension at 72 °C for 5 min. The primer pairs of *OsActin* (Table 2) was used to amplify the *OsActin* reference gene, at 95 °C for 3 min, followed by 25 cycles at 95 °C for 30 sec, 48 °C for 30 sec, 72 °C for 1 min and a final extension at 72 °C for 5 min. The results were visualized by loading on 1% (w/v) agarose gel electrophoresis.

3. Results and discussion

3.1. Cloning of *OsWee1*

The cloning of full length *OsWee1* gene (1239 bp) in the expression vector (pRI101-ON) was performed on the *NdeI* and *BamHI* restriction sites. Clone of *OsWee1* that obtained in previous study [14] was amplified using a pair of FNdeI and RBamHI primers (Table 2) in order to add those restriction sites on the open reading frame (ORF) of *OsWee1* before cloning. The construct of *OsWee1* gene in the expression vector was shown in Fig. 1A. The construct of *OsWee1* was then transformed into *E. coli* strain XL10 gold competent cells and selected using antibiotic kanamycin on the growth media. To verify the positive clones, 20 recombinant colonies were randomly selected and prepared for the colony PCR analysis using FNdeI and RBamHI primers (Table 2). As shown in Fig. 1B, the presence of 1251 bp of *OsWee1* gene was found in 12 clones which were confirmed by colony PCR and visualized on agarose gel. For further analysis, clone no. 7 was selected.

In order to evaluate the correct size and flanking of the *OsWee1* clones, PCR analysis, restriction enzymes digestion and sequencing were performed. The PCR reaction was conducted using 4 pairs of primers, CaMV-F/RV-R, FNdeI/RBamHI, nptII-F/nptII-R, CaMV-F/OsWee-R (Table 2). The PCR result showed that expected bands appear at the appropriate sizes, 1868 bp, 1251 bp, 524 bp and 1504 bp, respectively (Fig. 2 A). Digestion was performed by single or combination of *HindIII*, *BamHI* and *EcoRI* restriction enzymes. Open reading frame of *OsWee1* contains *BamHI* and *EcoRI* enzymes,

while *HindIII* was present two sites in the construct. Then, this clone was further confirmed by sequencing (*data not shown*). The correct band sizes of *OsWee1* after digestion was shown in Fig. 2B. The nucleotide sequence analysis showed a full length region of *OsWee1* about 1239 bp and a 100% homolog with cDNA of *OsWee1* in GeneBank (KX758541). It suggested that the desired recombinant *pRI101ON::OsWee1* was successfully prepared to expressed in *Agrobacterium*.

3.2. Transformation of *OsWee1* into *Agrobacterium*

The recombinant construct of *pRI101ON::OsWee1* was transformed into *Agrobacterium* strain GV3101 and selected on YEP solid medium supplemented with 50 mg/L kanamycin, 100 mg/L rifampicin and 12.5 mg/L gentamicin antibiotic (Fig. 3A). Twelve colonies were randomly selected for PCR analysis using *FNdeI* and *RBamHI* primers and 4 positive clones harboring *OsWee1* were obtained by PCR (Fig. 3B). This results clearly confirm that recombinant *pRI101ON::OsWee1* was transformed into *Agrobacterium*, and it can be used for transformation in rice.

The successful *Agrobacterium*-mediated transformation in rice has been achieved using various methods. However, in monocot plants remains limited because it is not a natural host for *Agrobacterium* [20]. Many researchers have developed methods for *Agrobacterium*-mediated transformation in monocotyledons, especially in utilizing of different *Agrobacterium* strains [21,22], piercing method and vacuum infiltration [23], choosing of different cultivars [24] and type of explants [25,26]. The basic protocol of *Agrobacterium*-mediated transformation [27] was developed for induction of callus derived from scutella seeds. However, since most of indica rice genotypes have less regeneration potential [28], we conducted *Agrobacterium*-mediated transformation in rice using 7-day-old rice sprouts as explants.

A hundred explants were infected by *Agrobacterium* suspension for 20 min and co-cultivation in dark condition for 2 d followed by cefotaxime-antibiotic treatment. Transformation was carried out twice with total 200 explants. However the percentage of rice transformation efficiency is very low (2%) (Table 3). Previous study reported [29] numerous factors that can improve transformation efficiency, was lighting condition, temperature, co-cultivation periods and *Agrobacterium*-density during co-cultivation step. The most critical factor reported was the period of co-cultivation. The successful integration of target gene into the plant genome occurs mainly during co-cultivation. Sahoo and Tuteja [29] found that

suitable method for rice transformation was infection for 20 min followed by co-cultivation for 2 day. An extension of co-cultivation period, caused arising of excessive bacterial growth which results in inhibiting explants growth, reduce the number of shoots generation and finally causing death of explant. Rashid *et al.* [30] reported that to anticipate those problems, reducing the density of bacteria into 0.1 – 0.2 OD prevents overgrowth bacteria during co-cultivation.

The co-cultivated explants were transferred in the selection medium, to inhibit the formation of non-transformant explants and eliminate the residual of *Agrobacterium*. The first shoots produced from the explants were subjected to three successive propagation cycles with the same level concentration of antibiotic. This method is applied to select putative transformants and reduce false positive transformants or eliminate the chimeric of transgenic explants [31]. After three sub-cultures, the non-transformant plantlet were turned into white (chlorosis), while the putative transformants were able to survive and grow normally (Fig. 4A). The lacking of *nptII* gene in the non-transgenic plants caused inhibiting of chlorophyll development and induce chlorosis at the shoot of rice plantlets. In contrast to the transgenic overexpressing *OsWee1* showed normal green at the shoots. The absence of *nptII* gene will suppress the growth of non-transformant roots caused by inability of root to inactivated the kanamycin in the media (Fig. 4A). Similar results were also obtained in previous study [32] that increased concentration of kanamycin may lead to inhibition of root growth. Kanamycin inhibits the synthesis of protein in plastid and mitochondrial. Kanamycin acts as an inhibitor, active destroy the function of ribosome following by inhibition of translational initiation. Another way, the response was automatically inhibit protein synthesis and effects on reducing the growth and development of plants.

3.3. Expression of *OsWee1* in rice

The putative transgenic plants which survived in selection *in vitro* medium were then transferred to soil and placed in the greenhouse under agronomic conditions (Fig. 4B). These plants were then analyzed for their transgenic status by PCR analysis. PCR analysis showed that the *nptII* gene 550 bp in size was found in 4 of putative transgenic lines (Fig. 4C). To determine the expression of *OsWee1* at the RNA levels, we performed a RT-PCR analysis. The quantity of RNA level is a reflection of the level of transcription. As shown in Fig. 5A, the transcript levels of rice overexpress-

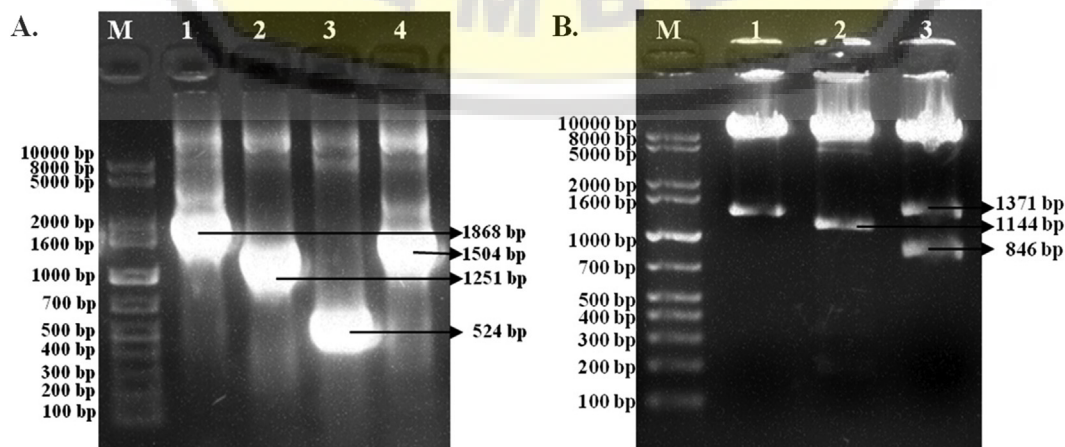


Fig. 2. Analyze of recombinant *pRI101ON::OsWee1*. A. PCR analysis of positive clones using several primers (M: 1 kb Tiangen Ladder, line 1–4: CaMV-F/RV-R primer, *FNdeI*/*RBamHI* primer, *nptII* primer, and CaMV-F/*OsWee*-R, respectively); B. Restriction digestion with *HindIII* (line 1), *EcoRI*/*BamHI* (line 2) and *HindIII*/*BamHI* (line 3).

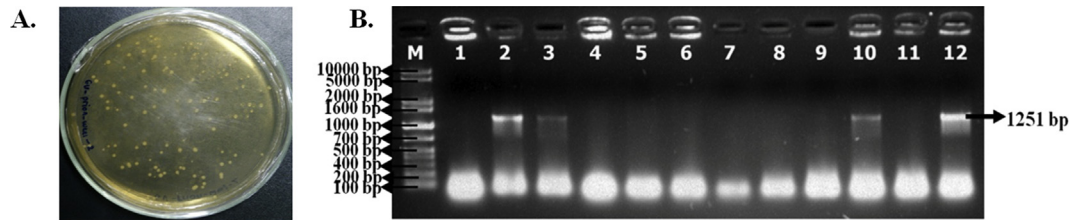


Fig. 3. Transformation *pRI101ON:OsWee1* into *Agrobacterium*. A. *Agrobacterium* colonies strain GV 3101 harboring recombinant DNA of *OsWee1*; B. PCR analysis of *OsWee1* using a set of F_{NdeI} and R_{BamHI} primers and the estimation size of *OsWee1* fragment.

Table 3
The percentage of rice transformation efficiency.

Transformation number	Number of infected seedling	Number of selected plant	Number of transformant ^a	Transformation efficiency (%)
1	100	3	3	3%
2	100	2	1	1%
Total	200	5	4	2%

^a Confirmation by PCR analysis.

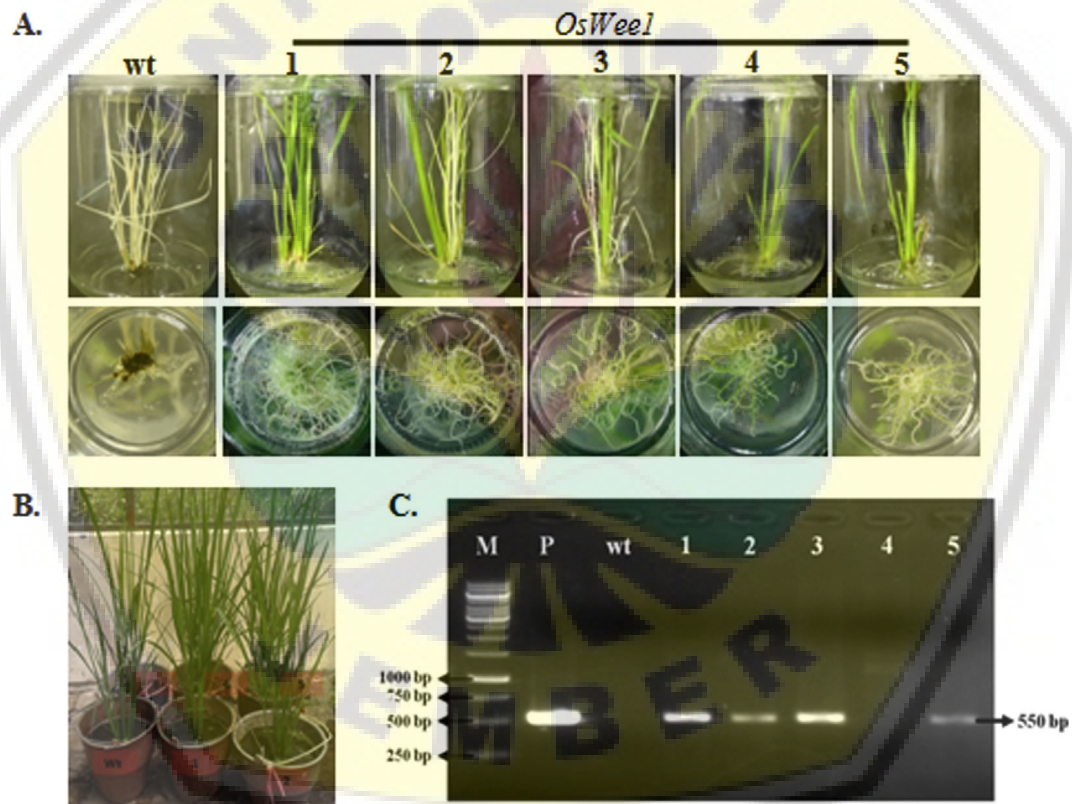


Fig. 4. Transgenic rice overexpressing of *OsWee1* gene. A. Phenotypic selection of transgenic rice overexpressing *OsWee1*, rice planlet (upper) and root (lower) of wildtype (wt) and transgenic (lane 1–5); B. Transgenic plants after acclimatization in green house; C. PCR analysis of the T0 transgenic plants (line 1–5), wildtype (WT), *pRI101ON:OsWee1* (P) as positive control, and DNA marker (M).

ing *OsWee1* were higher compared to the *wildtype*. The data indicates that *OsWee1* driven by CaMV35S was expressed in rice.

Southern blot analysis of transgenic rice was performed to prove integration of the transgene into the plant genome and to determine copy number of the T-DNA. Southern blot analysis was conducted using a gDNA isolated from leaves of four transgenic rice lines. The Southern blot analysis showed that the transgenic rice displayed one to three hybridized DNA copy with a difference in molecular size suggesting the independent transformation events. The hybridized DNA was not found in the genome of the WT plant

(Fig. 5B). These results confirmed that the copy of the *OsWee1* gene was integrated into the genome of the transgenic rice.

The transgenic plants required stability of expression to be used in seed production [33], as well as *OsWee1* overexpression plants. In the present study, four among five independent transformation events have been shown to carry multiple copies of the T-DNA. Multiple copies of the transgene are prone for transgene inactivation, silencing, and likely to cause a high frequency of insertional mutagenesis [34]. To obtained stability of expression, the selection will be carried out through another culture in the second generation

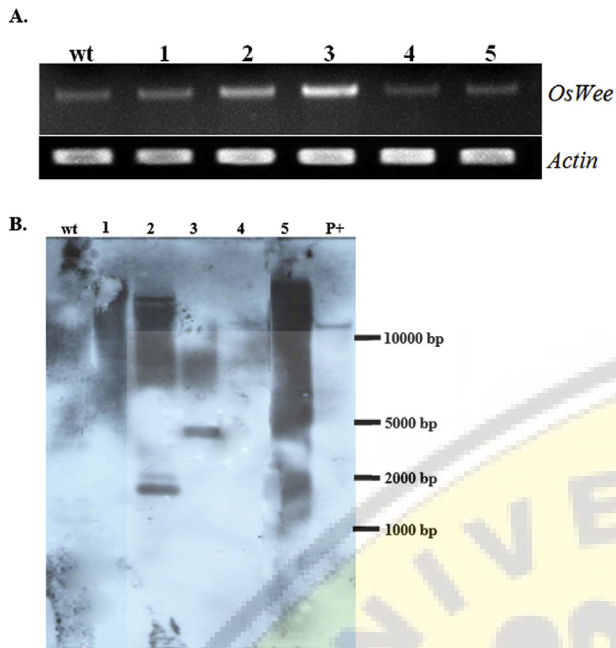


Fig. 5. Analysis of the first generation of transgenic plants (T0). A. RT-PCR analysis of the T0 transgenic plants overexpressing *OsWee1* using full length *OsWee1* primer (upper) and *Actin* gene as a control (lower); B. Southern blot analysis of transgenic plants (line 1–5), wildtype (WT), pR1010N::*OsWee1* (+P), and DNA marker (M).

of transgenic rice. Regeneration of haploid plants from anther culture followed by chromosomal doubling can produce double haploid or pure line of plants. This result will provide an opportunity to accelerate the time for the formation of inbred line which is normally through several inbreeding cycles [35].

Acknowledgements

We thank to Dr. M. Su’udi (Jember University) for helpful comments on this work. This research was supported by Competency-Based Grant (Hibah Berbasis Kompetensi 2018) No. 023/SP2H/LT/DRPM/2018 from The Ministry of Research, Technology, and Higher Education of Indonesia to Dr. Netty Ermawati.

References

[1] Dewitte W, Murray JAH. The plant cell cycle. *Annu. Rev. Plant Biol.* 2018;54(2003):235–64. doi: <https://doi.org/10.1146/annurev-arplant.54.031902.134836> [May 29, 2018].

[2] Harashima H, Dissmeyer N, Schnitger A. Cell cycle control across the eukaryotic kingdom. *Trends Cell Biol.* 2013;23(7):345–56. doi: <https://doi.org/10.1016/j.tcb.2013.03.002> [May 29, 2018].

[3] Nurse P, Thuriaux P. Regulatory genes controlling mitosis in the fission yeast *Schizosaccharomyces pombe*. *Genetics* 1980;96(3):627–37 [September 21, 2018] <https://www.ncbi.nlm.nih.gov/pmc/articles/PMC1214365/>.

[4] Shiozaki K, Russell P. Cell-cycle control linked to extracellular environment by MAP kinase pathway in fission yeast. *Nature* 1995;378(6558):739–43. doi: <https://doi.org/10.1038/378739a0> [September 21, 2018].

[5] Nurse P. Genetic control of cell size at cell division in yeast. *Nature* 2018;256(1975):547–51. doi: <https://doi.org/10.1038/256547a0> [May 29, 2018].

[6] Do K, Doroshov JH, Kummur S. Wee1 kinase as a target for cancer therapy. *Cell Cycle* 2013;12(19):3159–64. doi: <https://doi.org/10.4161/cc.26062> [May 29, 2018].

[7] Kalhorzadeh P, Hu Z, Cools T, Amiard S, Willing E, De Winne N, et al. Arabidopsis thaliana RNase H2 deficiency counteracts the needs for the WEE1 checkpoint kinase but triggers genome instability. *Plant Cell* 2018;26(2014):3680–92. doi: <https://doi.org/10.1105/tpc.114.128108> [May 29, 2018].

[8] Sørensen CS, Syljua RG. Safeguarding genome integrity: the checkpoint kinases ATR, CHK1 and WEE1 restrain CDK activity during normal DNA replication. *Nucleic Acids Res* 2012;40(2):477–86. doi: <https://doi.org/10.1093/nar/gkr697> [May 29, 2018].

[9] Caparelli ML, O’Connell MJ. Regulatory motifs in Chk1. *Cell Cycle* 2013;12(6):916–22. doi: <https://doi.org/10.4161/cc.23881> [May 29, 2018].

[10] Su C, Zhao H, Zhao Y, Ji H, Wang Y, Zhi L, et al. RUG3 and ATM synergistically regulate the alternative splicing of mitochondrial nad2 and the DNA damage response in Arabidopsis thaliana. *Sci Rep* 2018;7(2017):1–14. doi: <https://doi.org/10.1038/srep43897> [May 29, 2018].

[11] Yu Z, Zhang M, Wang G, Xu D, Keifenheim D, Franco A, Cansado J, Masuda H, Rhind N, Wang Y, Jin Q. Fission yeast nucleolar protein Dnt1 regulates G2/M transition and cytokinesis by downregulating Wee1 kinase. *J Cell Sci* 2014;126(21):4995–5004. doi: <https://doi.org/10.1242/jcs.132845> [May 29, 2018].

[12] Russell P, Nurse P. Negative regulation of mitosis by wee1, a gene encoding a protein kinase homolog. *Cell* 1987;49(1987):559–67. doi: [https://doi.org/10.1016/0092-8674\(87\)90458-2](https://doi.org/10.1016/0092-8674(87)90458-2) [May 29, 2018].

[13] Sun Y, Dilkes BP, Zhang C, Dante RA, Carneiro NP, Lowe KS, Jung R, Gordon-Kamm WJ, Larkins B. Characterization of maize (*Zea mays* L.) Wee1 and its activity in developing endosperm. *Proc Natl Acad Sci* 1999;96:4180–5. doi: <https://doi.org/10.1073/pnas.96.7.4180> [May 29, 2018].

[14] Gonzalez N, Gevaudant F, Hernould M, Chevalier C, Mouras A. The cell cycle-associated protein kinase WEE1 regulates cell size in relation to endoreduplication in developing tomato fruit. *Plant J* 2007;51(4):642–55. doi: <https://doi.org/10.1111/j.1365-3113.2007.03167.x> [May 29, 2018].

[15] Sorrell DA, Marchbank A, McMahon K, Dickinson JR, Rogers HJ, Francis D. A WEE1 homologue from Arabidopsis thaliana. *Planta* 2002;215(3):518–22. doi: <https://doi.org/10.1007/s00425-002-0815-4> [May 29, 2018].

[16] Ermawati N, Wibisono Y. Early isolation of cell cycle-associated protein kinase (*OsWee1*) gene in rice (*Oryza sativa* L.). *Pak. J. Biotechnol.* 2017;14(1):71–6 [May 29, 2018] <http://www.pjbt.org/uploads/PJBT-VOL-14-NO-1-OF-YEAR-2017%20%2811%29.pdf>.

[17] Sambrook J, Russell. *Molecular cloning a laboratory manual*. third ed. Cold Spring Harbor Laboratory Press; 2001.

[18] Dellaportia SL, Wood J, Hicks JB. A plant DNA miniprep: version II. *Plant Mol Biol Rep* 1983;1:19–21. doi: <https://doi.org/10.1007/BF02712670> (September 19, 2018).

[19] Apriasti R, Widyaningrum S, Hidayati WN, Sawitri WD, Darsono N, Hase T, et al. Full sequence of the coat protein gene is required for the induction of pathogen-derived resistance against sugarcane mosaic virus in transgenic sugarcane. *Mol Biol Rep* 2018;1(2018):1–10. doi: <https://doi.org/10.1007/s11033-018-4326-1> [September 19, 2018].

[20] Aldemita RR, Hodges TK. Agrobacterium tumefaciens-mediated transformation of japonica and indica rice varieties. *Planta* 2018;199(1996):612–7. doi: <https://doi.org/10.1007/BF00195194> [May 29, 2018].

[21] Balaji V, Rajamuni P, Sridevi G, Veluthambi K. Agrobacterium-mediated Transformation Efficiency in Blackgram and Rice Enhanced by Multiple Copies of pTiBo542 virB and virG. *Indian J Biotechnol* 2003;2:138–46 [May 29, 2018] <http://nopr.niscair.res.in/handle/123456789/11283>.

[22] Ratanasut K, Rod-In W, Sajipuli K. In planta agrobacterium-mediated transformation of rice. *Rice Sci* 2017;24(3):181–6. doi: <https://doi.org/10.1016/j.rsci.2016.11.001> [May 29, 2018].

[23] Lin J, Zhou B, Yang Y, Mei J, Zhao X, Guo X, Huang X, Tang D, Liu X. Piercing and vacuum infiltration of the mature embryo: a simplified method for Agrobacterium-mediated transformation of indica rice. *Plant Cell Rep* 2009;28:1065–74. doi: <https://doi.org/10.1007/s00299-009-0706-2> [May 29, 2018].

[24] Saika H, Toki S. Mature seed-derived callus of the model indica rice variety Kasalath is highly competent in Agrobacterium-mediated transformation. *Plant Cell Rep* 2010;29(12):1351–64. doi: <https://doi.org/10.1007/s00299-010-0921-x> [May 29, 2018].

[25] Manimaran P, Kumar GR, Reddy MR, Jain S, Rao TB, Mangrauthia SK, et al. Infection of early and young callus tissues of indica rice BPT 5204 enhances regeneration and transformation efficiency. *Rice Sci* 2013;20(2013):415–26. doi: [https://doi.org/10.1016/S1672-6308\(13\)60153-5](https://doi.org/10.1016/S1672-6308(13)60153-5) [May 29, 2018].

[26] Dey M, Bakshi S, Galiba G, Sahoo L, Panda SK. Development of a genotype independent and transformation amenable regeneration system from shoot apex in rice (*Oryza sativa* spp. *indica*) using TDZ. *Biotech* 2012;2(3):233–40. doi: <https://doi.org/10.1007/s13205-012-0051-y> [May 29, 2018].

[27] Hiei Y, Ohta S, Komari T, Kumashiro T. Efficient transformation of rice (*Oryza sativa* L.) mediated by Agrobacterium and sequence analysis of the boundaries of the T-DNA. *Plant J* 1994;6(2):271–82. doi: <https://doi.org/10.1046/j.1365-3113.1994.6020271.x> [May 29, 2018].

[28] Nishimura A, Ashikari M, Lin S, Takashi T, Angeles ER, Yamamoto T, Matsuoka M. Isolation of a rice regeneration quantitative trait loci gene and its application to transformation systems. *PNAS* 2005;102(33):11940–4. doi: <https://doi.org/10.1073/pnas.0504220102> [May 29, 2018].

[29] Sahoo RK, Tuteja N. Development of Agrobacterium-mediated transformation technology for mature seed-derived callus tissues of indica rice cultivar IR64. *GM Crops Food: Biotechnol Agric Food Chain* 2012;3(2):123–8. doi: <https://doi.org/10.4161/gmcr.20032> [May 29, 2018].

[30] Rashid H, Afzal A, Khan MH, Chaudhry Z, Malik SA. Effect of bacterial culture density and acetosyringone concentration on Agrobacterium mediated transformation in wheat. *Pak J Bot* 2010;42(6):4183–9 [May 29, 2018] https://www.researchgate.net/publication/260156533_Effect_of_bacterial_culture_density_and_acetosyringone_concentration_on_Agrobacterium_mediated_transformation_in_wheat.

[31] Nap JP, Bijvoet J, Stiekema WJ. Biosafety of kanamycin-resistant transgenic plants. *Transgenic Res* 1992;1(6):239–49 [May 29, 2018] <https://link.springer.com/article/10.1007/BF02525165>.

- [32] Bibi N, Fan K, Yuan S, Ni M, Ahmed IM, Malik W, Wang X. An efficient and highly reproducible approach for the selection of upland transgenic cotton produced by pollen tube pathway method. *Aust J Crop Sci* 2013;7(11):1714–22 [May 29, 2018] <https://search.informit.com.au/documentSummary;dn=644871058289920;res=IELHSS>.
- [33] Takaiwa F, Wakasa Y, Takagi H, Hiroi T. Rice seed for delivery of vaccines to gut mucosal immune tissues. *Plant Biotechnol J* 2015;13(8):1041–55. doi: <https://doi.org/10.1111/pbi.12423> [May 29, 2018].
- [34] Finn TE, Wang L, Smolilo D, Smith NA, White R, Chaudhury A, Dennis ES, Wang M. Transgene expression and transgene-induced silencing in diploid and autotetraploid arabidopsis. *Genetic* 2011;187(2):409–23. doi: <https://doi.org/10.1534/genetics.110.124370> [September 22, 2018].
- [35] Silva TD. Indica rice anther culture: can the impasse be surpassed? *Plant Cell Tissue Organ Culture* 2010;100(1):1–11. doi: <https://doi.org/10.1007/s11240-009-9616-9> [May 29, 2018].



Research article Open access

[*Agrobacterium tumefaciens*-mediated transformation of *Dendrobium lasianthera* J.J.Sm: An important medicinal orchid](#)

Edy Setiti Wida Utami, Sucipto Hariyanto, Yosephine Sri Wulan Manuhara

Pages 703-709

In Silico Biotechnology

Short communication Open access

[Screening of anti-inflammatory phytochemicals from *Crateva adansonii* leaf extracts and its validation by *in silico* modeling](#)

Rathinavel Thirumalaisamy, Subramanian Ammashi, Govarathanan Muthusamy

Pages 711-719

Research article Open access

[*In silico* structural and functional modelling of Antifreeze protein \(AFP\) sequences of Ocean pout \(*Zoarces americanus*, Bloch & Schneider 1801\)](#)

Manojit Bhattacharya, Arpita Hota, Avijit Kar, Deep Sankar Chini, ... Basanta Kumar Das

Pages 721-730

Research article Open access

[*In silico* structural homology modeling of nif A protein of rhizobial strains in selective legume plants](#)

Sadam D.V. Satyanarayana, M.S.R. Krishna, Pindi Pavan Kumar, Sirisha Jeeredy

Pages 731-737

Research article Open access

[*In silico* analysis of squalene synthase in Fabaceae family using bioinformatics tools](#)

Zahra Aminfar, Masoud Tohidfar

Pages 739-747

Research article Open access

[*In silico* studies on bacterial xylanase enzyme: Structural and functional insight](#)

Bhramar Dutta, Aparna Banerjee, Priyanka Chakraborty, Rajib Bandopadhyay

Pages 749-756

Research article Open access

[*In silico* thermodynamic stability of mammalian adaptation and virulence determinants in polymerase complex proteins of H9N2 virus](#)

Zienab Mosaad, Abdelsatar Arafa, Hussein A. Hussein, Mohamed A. Shalaby

Pages 757-767

Research article Open access

[Interaction of rs316019 variants of SLC22A2 with metformin and other drugs- an *in silico* analysis](#)

Abu Ashfaqur Sajib, Tasmia Islam, Nilanjana Paul, Sabina Yeasmin