

COFFEE SCIENCE

Coffee Science is an open access journal dedicated to publishing high-quality research in all scientific areas of coffee. Papers published by the journal represent important contribution to the development of coffee science in the fields of Agricultural, Biological, Food, and Social Sciences.

Coffee Science is a quarterly journal published by the "Universidade Federal de Lavras - UFLA", MG, Brazil, and the "Consórcio Pesquisa Café" in electronic version.

Announcements

: Ethics Committee

Authors should attach a statement from their Research Institution's Ethics Committee when the study involves humans.

Posted: 2019-09-25

[More Announcements...](#)

Vol 14, No 4 (2019)

Table of Contents

Articles

MICROCLIMATIC CHARACTERIZATION OF CONILON COFFEE CULTIVATED IN NORTH-SOUTH ALIGNMENT IN NORTHERN ESPÍRITO SANTO STATE, BRAZIL	PDF
Ana Paula Pereira Bis, Fábio Luiz Partelli, Weverton Pereira Rodrigues, Antelmo Ralph Falqueto, Marcelo Curitiba Espindula, Lima Deleon Martins	427-437
PHYTOTOXICITY AND GROWTH OF COFFEE PLANTS AS A FUNCTION OF THE APPLICATION OF HERBICIDE 2,4-D	PDF
Giovani Belutti Voltolini, Dalysse Toledo Castanheira, Larissa Cocato da Silva, Ademilson de Oliveira Alecrim, Tiago Teruel Rezende, João Paulo Rodrigues Alves Delfino Barbosa, Rubens José Guimarães	438-445
APPLICATION OF COFFEE PEEL WASTE AS RAW MATERIAL FOR XYLOOLIGOSACCHARIDE PRODUCTION	PDF
Anak Agung Istri Ratnadewi, Handariatul Masrurroh, Suwardiyanto, Agung Budi Santoso	446-454
QUALITY OF SPECIALTY NATURAL COFFEE STORED IN DIFFERENT PACKAGES IN BRAZIL AND ABROAD	PDF
Flávio Meira Borém, Fabrício Teixeira Andrade, Cláudia Mendes Dos Santos, Ana Paula de Carvalho Alves, Gabriel Carvalho Matias, Daniela Edel Teixeira, Paulo César Ossani, Marcelo Ângelo Cirillo	455-466
SELECTIVITY OF THE HERBICIDE CHLORIMURON ETHYL ON YOUNG COFFEE PLANTS	PDF
Dalysse Toledo Castanheira, Giovani Belutti Voltolini, Ademilson de Oliveira Alecrim, Tiago Teruel Rezende, Pedro Menicucci Netto, Larissa Cocato da Silva, Rubens José Guimarães	467-472
EFFECT OF INDUCED BIOLOGICAL FERMENTATIONS ON COFFEE SENSORY QUALITY	PDF
Talita Amparo Tranches Cândido, Pedro Pereira Sepini, Polyana de Faria Cardoso Abrão, Reginaldo de Oliveira, Kátia Alves Campos, Leandro Carlos Paiva	473-476
THE EFFECT OF STEEPING ROBUSTA COFFEE BEANS ON MONOCYTES: EXPRESSION OF IL-1β AND TNF-α AGAINST <i>Streptococcus mutans</i>	PDF
I Dewa Ayu Ratna Dewanti, Pujiana Endah Lestari, Roedy Budirahardjo, Dyah Setyorini, Ristya Widi Endah Yani, Sunlip Wibisono, Maizirwan Mel	477-483

<u>THE EFFECT OF STEEPING ROBUSTA COFFEE BEANS ON MONOCYTES: EXPRESSION OF IL-1β AND TNF-α AGAINST <i>Streptococcus mutans</i></u>	PDF 477-483
I Dewa Ayu Ratna Dewanti, Pujiana Endah Lestari, Roedy Budirahardjo, Dyah Setyorini, Risty Widi Endah Yani, Sunlip Wibisono, Maizirwan Mel	
<u>IMPACT OF DRYING METHODS OVER THE GERMINATIVE POTENTIAL OF CONILON COFFEE OF LATE MATURATION</u>	PDF 484-492
Sheila Cristina Prucoli Posse, Wagner Nunes Rodrigues, Marcone Comério, Paulo Sérgio Volpi, Abraão Carlos Verdin Filho, Robson Prucoli Posse, Vinicius de Souza Oliveira, Sara Dousseau Arantes	
<u>DIETARY FIBER AND ANTIOXIDANT ACTIVITY OF GLUTEN-FREE COOKIES WITH COFFEE CHERRY FLOUR ADDITION</u>	PDF 493-500
Damat Damat, Rista Anggriani, Roy Hendroko Setyobudi, Peeyush Soni	
<u>INITIAL ROASTING TEMPERATURE EFFECT ON THERMAL BEHAVIOUR AND CHARACTERISTIC OF LIBERICA COFFEE</u>	PDF 501-508
Heriyanti Heriyanti, Yulia Panggabean, Enggar Tyas Pangestu, Rayandra Asyhar, Sutrisno Sutrisno	
<u>SENSORY QUALITY OF ROASTED COFFEE BEANS UNDER DIFFERENT STORAGE CONDITIONS</u>	PDF 509-517
Denis Henrique Silva Nadaleti, Hully Alves Rocha, Luciana Maria Vieira Lopes Mendonça, José Marcos Angélico de Mendonça, Iêda Bruna dos Reis, Carlos Henrique Evaristo, Sávila Del Vale Terra	
<u>COFFEE WASTE BIOCHAR: CHARACTERIZATION AND ZINC ADSORPTION FROM AQUEOUS SOLUTION</u>	PDF 518-529
Lindiamara Sertoli, Ruan Carnier, Cleide Aparecida de Abreu, Aline Renée Coscione, Leônidas Carrijo Azevedo Melo	
<u>QUITZALOFOP-P-ETHYL CONTROLLING SOURGRASS (<i>Digitaria insularis</i>) AND GOOSEGRASS (<i>Eleusine indica</i>) IN INFESTED COFFEE AREAS</u>	PDF 530-537
Ximena Maira de Souza Vilela, Fernanda Carvalho Lopes de Medeiros, Adenilson Henrique Gonçalves, Lindomar Canuto da Silva	
<u>EVALUATION OF SLOW RELEASE FERTILIZER ON THE INITIAL DEVELOPMENT AND COFFEE PRODUCTION</u>	PDF 538-543
Kleso Silva Franco Junior, Julian Silva Carvalho, Bernardino Cangussu Guimarães, Camila Karen Reis Barbosa, Giselle Prado Brigante, Marcio de Souza Dias, André Aprelini, Nilton de Oliveira Silva	
<u>EFFECT OF INTERCROPPING IN SHADING WITH CROTALARIA ON THE INITIAL DEVELOPMENT OF COFFEE TREE</u>	PDF 544-549
Kleso Silva Franco Junior, Ana Beatriz Carvalho Terra, Ligiane Aparecida Florentino, Julian Silva Carvalho, Bernardino Cangussu Guimarães, Nilton de Oliveira Silva	



APPLICATION OF COFFEE PEEL WASTE AS RAW MATERIAL FOR XYLOOLIGOSACCHARIDE PRODUCTION

Anak Agung Istri Ratnadewi¹, Handariatul Masruroh²,
Suwardiyanto³, Agung Budi Santoso⁴

(Received: September 09, 2019; accepted: October 29, 2019)

ABSTRACT: Coffee is the second most common trade commodity in the world after petroleum. The coffee industry generates large amounts of waste in the form of coffee peels. Coffee peel waste consist of lignocellulose containing hemicellulose and other chemical compounds. The objective of this research was to extract xylan, the main component of hemicellulose from coffee waste, and to utilize the xylan in the production of xylooligosaccharide (XOS). Xylan was extracted from coffee waste using NaOH solution and neutralized by HCl 6 M. Afterward, xylan was precipitated using ethanol. Various NaOH concentrations (4, 8, 12 and 16 % w/v) were used to obtain the xylan. NaOH solution with a concentration of 12 % results 43 % extraction of xylan from coffee waste. Xylan obtained from the extraction was hydrolyzed using endo- β -1,4-xylanase from *Bacillus* sp. to produce XOS. The incubation time of enzyme-substrate was observed at 40 °C, pH 5 and enzyme dose of 23.6 U. Thin layer chromatography results showed that the hydrolyzed products of xylan are XOS with composition xylobiose (X2), xylotriose (X3), xyloetraose (X4) and xylopentaose (X5). LC-MS studies revealed that X2 is the dominant product with the concentration of 6.00 ppm. This research demonstrates the potential to utilize coffee peel waste as a source of xylan for the production of XOS.

Index terms: Coffee peel waste, endo- β -1,4-xylanase, xylooligosaccharide (XOS).

1 INTRODUCTION

In the last decade, there has been an increase in the utilization of bioactive compounds derived from plant as a substitute for the synthetic molecules used in the food and pharmaceutical as a guard of gastrointestinal health. Consumer awareness on healthy food, alternative pharmaceuticals and prohibitions of the use of antibiotics as growth promoter in the feed of poultry and livestock, phobia against excessive antibiotics and increase of the drug cost are some of the drivers of the research on the bioactive compound derived from plant having potency in guarding the intestinal health called probiotics (Samanta, et al., 2013). Probiotics are a selected fermentation composition that produces a particular change in the composition and/or activity of gastrointestinal tract microbiota which leads to the health benefits for the host (Roberfroid et al., 2010). Some of the indigestible food materials appear as the candidates of prebiotics including galactans, fructan, XOS and β -glucan or arabinoxylan and can be produced from lignocellulose biomass which is abundant and renewable (Cummings et al., 2001; Mei et al., 2011, Samanta, et al., 2012; Achary et al., 2011; Saha 2003). XOS from corn stover and garlic straw have been reported having prebiotics effects by inducing the production of lactate, formate, and SCFA (acetate, propionate

and butyrate) and increasing the population of *Bifidobacterium* and *Lactobacillus* bacteria beneficial for the gastrointestinal health (Buruiana et al., 2016; Kallel et al., 2014). The rise in demand for prebiotics precipitates this research into XOS production.

XOS are sugar oligomers composed of some xylose monomers with a degree of polymerization between 2 – 10. Production of XOS has received attention because it has potential to be applied in the production of food containing prebiotics. XOS has prebiotic effects when it is consumed as a part of the food. XOS with a low degree of polymerization (DP) have been proven to promote proliferation of bifidobacteria, beneficial microorganisms in human intestine (Brienzo, 2010). XOS is non digestible food ingredient and gives a positive effect by stimulating the growth of beneficial bacteria within the colon (Achary et al., 2011) XOS can be produced from waste lignocellulose containing xylan (Brienzo et al., 2010). Generally, xylan is in the complex of xylan-lignin within biomass containing lignocellulose. Because hydrolysing xylan is difficult of the difficulty of XOS production has to be conducted in two steps. First xylan must be extract from biomass containing lignocellulose. Then, it must be extract be hydrolysed enzymatically or chemically. XOS production through enzymatic xylan hydrolysis is preferable since it does not

¹Center for Development of Advanced Science and Technology - Universitas of Jember - Jalan Kalimantan 37 - Jember 68121 Indonesia - istri_dewi.fmipa@unej.ac.id

^{2,3,4}Departement of Chemistry - Faculty of Mathematics and Natural Sciences - Universitas of Jember, Jalan Kalimantan 37, Jember 68121 - Indonesia - antok_fmipa@unej.ac.id, agungbs_fmipa@unej.ac.id, ndahanda09@gmail.com

result in a negative by-product (Aarchary & Prapulla, 2011). Lignocellulose biomass that has been reported to contain xylan for XOS production include corn cobs, natural grass, tobacco stalk, sugarcane bagasse, pigeon pea, and cotton stalks. (Aarchary & Prapulla, 2009; Akpinar et al., 2010; Brienzo et al., 2010; Samanta et al., 2012; Samanta et al., 2013). This study is evaluating a new biomass resource, i.e. coffee bean peel, as a raw material for xylan extraction.

Coffee as the second most traded word commodity after petroleum. It is produced in about 60 tropical and subtropical countries and exported as an agricultural product (Lashermes et al., 2008; Viera, 2008). It is also a popular beverage and its consumption has increased over last the 150 years (Daglia et al., 2000). While meeting increase demand, the growing coffee industry is also creating an environmental problem (Solange et al., 2011). Waste from the coffee industry includes coffee pulp (CP), coffee husk (CH), coffee silver peel (CSS) and spent coffee grounds (SCG). Coffee peel waste is obtained by separating coffee beans from the fruit. Spent coffee grounds are the waste from the process of dissolving grounded coffee with hot water in the instant coffee industry (Solange et al., 2011). Many types of research have been pursued about ways to add value of the waste of the coffee industry. Most of the research focuses on the utilization of SCG as a resource in the production of biodiesel, fuel pellets, ethanol, adsorbents, and antioxidants etc. (Kondamudi et al., 2008; Franca et al., 2009; Ramalakshmi et al., 2009). The other research on CP, CH and CSS try to use them as substrate in the production of xylanase, fungi, gibberellins (plant hormones), biogas etc. (Murthy & Naidu, 2012; Fan et al., 2001; Machado et al., 2002; Jayachandra et al., 2011). Each waste component has hemicellulose content of 2.3 % (CP), 7.0 % (CH) and 13.1 % (CSS) (Musatto et al., 2011; Franca et al., 2009; Murthy & Naidu, 2010). Since it is not economic to separate the components of coffee waste, hence this research exploits all the part of the coffee waste. Several base solutions were used to optimize the xylan extraction. Xylan extracted was hydrolyzed using endo- β -1,4-D-xylanase isolated from *Bacillus* sp. of the termite abdomen system to produce XOS (Ratnadewi et al., 2007)

2 MATERIALS AND METHODS

Materials

XOS standards (X2, X3, X4, and X5) are products of Megazyme, Ireland. TLC plate Silica Gel 60 F254 was from Merck, Germany. Coffee

peel waste was robusta varieties of local milling in the Silo district, Jember Regency. Coffee peel was ground to 100 mesh then dried at 60 °C until constant weight. Material was stored in a dry place until needed.

Microorganisms

Bacillus sp. from termite abdominal system was used to produce endo- β -1,4-xylanase which was kept at -20 °C in glycerol stock.

Delignification of coffee peel waste

Coffee peel (10 g) was soaked in 100 mL of 0.5 % NaOCl solution for 5 h at 28 °C and rinsed with water afterward. The delignified sample was subjected to the xylan extraction process.

Xylan extraction from delignified coffee peel waste

A solid sample with moisture content of 9.56 \pm 0.19 % (w/w) from the delignification process was soaked in NaOH solution for 24 h at 28 °C with a biomass : solution ratio of 1: 10 (w/v). The concentrations of NaOH were 2, 4, 8 and 12 % (w/v) The mixture was centrifuged at 10,000 rpm for 20 min. The supernatant was separated and neutralized with drops of HCl 6 N. Centrifugation was applied to the neutral sample at 10,000 rpm for 10 min and the supernatant of this process was mixed with ethanol 95 % (w/w) with volume ratio 1 : 3 (supernatant : ethanol). The mixture was centrifuged at 10,000 rpm for 10 min and the precipitate was collected and dried. Crude xylan content was calculated using the equation below:

$$\text{TrueYield Crude xylan (\%)} = \frac{\text{final weight}}{\text{initial weight}} \times 100\%$$

Xylan characterization by Fourier Transform Infrared Spectroscopy (FT-IR)

Xylan extracted from coffee peel waste was characterized using Fourier Transform Infrared Spectroscopy (FT-IR) HTS-XT, Bucket Optics GBH, Ettlinger at 400 – 4000 cm^{-1} . The sample of 10 mg in powder form was used in this characterization.

Enzymatic hydrolysis of xylan from coffee peel waste using endo- β -1,4-xylanase

Endo- β -1,4-xylanase with specific activity of 23.60 U/mg and total protein content of 0.454 mg. 125 μL crude enzyme was added to 125 μL xylan substrate 1 % (w/v, dry base) extracted from coffee peel waste. The mixture was incubated at 40 °C for 16, 24, 32 and 48 h. Total reducing

sugar was determined using DNS reagent and the absorbance was measured at 550 nm (G. Miller, 1959)

Qualitative analysis of hydrolysis products using thin layer chromatography (TLC)

XOS products from the enzymatic hydrolysis process were separated by means thin layer chromatography (TLC). The sample was dropped onto a silica plate and elution was done using the mixture of 1-butanol: acetic acid: water with a ratio 2: 1: 1 (v/v). XOS was detected by spraying solution of naphthol and H₂SO₄ in ethanol followed by drying at 100 °C.

Quantitative analysis of hydrolysis products by LC-MS

Enzymatic hydrolysis products of xylan were quantified using Liquid Chromatography-Mass Spectrometry (LC-MS) equipped with a Waters Sugar Pak I column (6.5 x 300 mm) at 80 °C and a mobile phase flow rate of 0.5 mL min⁻¹ with water as the solvent. 10 µL of the sample was injected manually. XOS concentration was calculated by comparing the peak area of the sample and standard. The standards were xylose, xylobiose, xylotetraose, xylopentaose, and xylohexaose.

3 RESULTS AND DISCUSSION

True yield Xylan

Coffee peel waste is an abundant lignocellulosic waste and a potential source for xylan extraction. Recently there is an increase in the study of xylan extraction since xylan can be converted to prebiotic which is beneficial as antiulcer, antitussive and immunostimulant (Ebringerova et al., 2002; Akpınar et al., 2007). Xylan is the major component of hemicellulose within plant cell walls and which has covalent bonds between lignin and cellulose which form lignocellulose complex (Gowdhaman & Ponnusani, 2015). Xylan within lignocellulosic biomass can be extracted using several solvents such as alkaline solution, organic solvents, dilute acidic solution, enzyme, and water. Extraction by alkaline solution is preferred because hemicellulose by hydrolyzing the ester bond, which causes swelling of the cellulose and decrease the crystallinity of the cellulose (Samanta et al., 2013). It was reported that hydroxyl ion provokes the swelling of cellulose and destruction of the hydrogen bond between cellulose and hemicellulose eventually

xylan can be extracted easily (Al-Sheraji et al., 2013). Samanta et al. (2013) investigated the xylan extraction of pigeon pea using two alkaline solutions, i.e. NaOH and KOH and no difference among them. Based on this result, NaOH solution was used to extract xylan from coffee peel waste by soaking at room temperature for 24 h followed by neutralization using HCl 6 M and precipitation of xylan polymer using ethanol. The concentrations of NaOH solution were 4, 8, 12 and 16 % (w/v) to optimize the insoluble xylan. The result of insoluble xylan is tabulated in Table 1.

In the Table 1 is present that insoluble xylan recovery efficiency increased with increasing NaOH concentration from 4 to 12 % and decrease afterward. The more NaOH used for extraction the more xylan could be extracted up until 12%. Further increases in NaOH concentration causes xylan degradation, eventually lowering the xylan yield (Da Silva et al., 2012). It can be concluded that NaOH solution of 12 % is the optimum concentration for extracting of insoluble xylan from coffee peel waste with the yield of 9.73 %. This concentration has a relative yield of 43 % (Fig. 1) where relative yield was calculated based on hemicellulose content of coffee pulp, coffee husk and coffee silver peel (Murthy & Naidu, 2012).

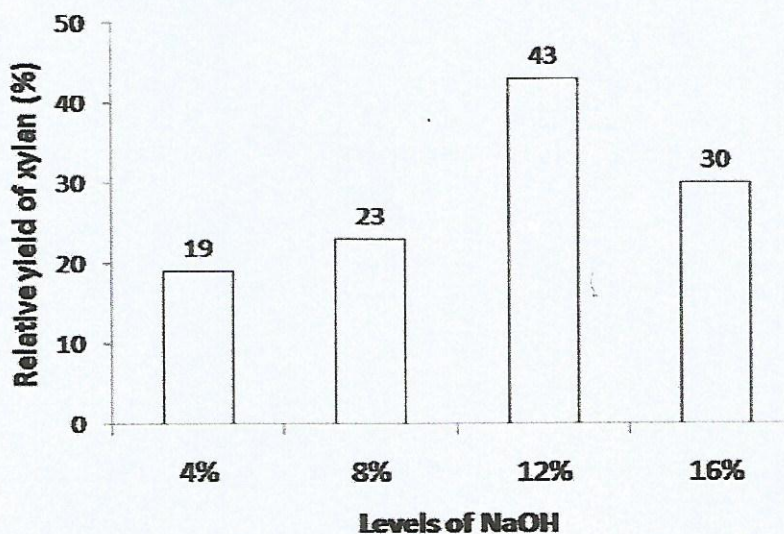
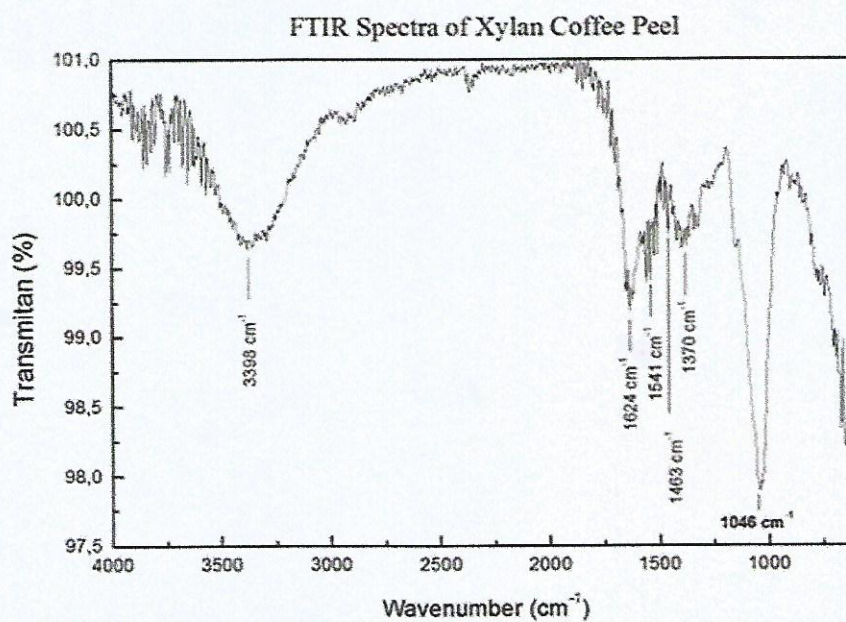
FTIR Spectra

Infrared spectroscopy is used to identify functional groups of the organic compound. IR spectra show a specific signal of the functional group. This technique was employed to identify functional groups of xylan extracted from coffee peel waste using alkaline solution.

Fig. 2 is the IR spectra of xylan from coffee peel waste showing the characteristic of xylan. The spectra show vibrations at the wavenumber of 3398, 1642, 1541, 1463, 1370, 1048 and 652.29 cm⁻¹. These vibrations show the pattern of xylan IR spectra (Kumar & Negi, 2012). The broadband of 3398 cm⁻¹ is from the vibration of the hydroxyl group of xylan (Oliviera et al., 2010). The absorbed water within xylan peaked at 1642 cm⁻¹ and aromatic C=C bond appeared at 1541 cm⁻¹ (Zhou et al., 2011). The presence of lignin vibration in these spectra infers that the delignification process was not complete (Kumar & Negi, 2012). The vibration of methoxy groups (O-CH₃) appears at the wavenumber of 1463 cm⁻¹, this band may be due to the possible existence of 4-O-methyl-glucuronosyl within the extracted xylan (Yang et al., 2007).

TABLE 1 - Effect of alkali concentration on the recovery of insoluble xylan from coffee peel waste.

Concentration of NaOH (w/v)	Recovery of insoluble xylan (% of raw materials) *
4 %	4,33±0,11
8 %	5,13±0,31
12 %	9,73±0,11
16 %	6,67±0,23

**FIGURE 1** - Effect of NaOH concentration on relative yield of xylan from coffee peel waste.**FIGURE 2** - FT-IR spectra of xylan from obtained through 12 % sodium hydroxide application from coffee peel waste

The peak at 1370 cm^{-1} is the bending mode of C-H and C-O of xylan (Peng et al., 2010). A sharp absorbance at 1048 cm^{-1} characterizes xylan vibration due to the stretching mode of C-C, C-O and bending mode of C-OH within xylan (Colom et al., 2003).

XOS production from xylan of coffee peel waste

Xylan extracted from coffee peel waste was hydrolysed to produce XOS. Xylan is a heteropolysaccharide. Xylose is the component of the main chains of xylan and is connected by β -1,4-glycosidic bonds with O-acetyl, arabinosyl, and methyl-glucuronosyl side chains (Abirami et al., 2011). Xylan can be employed in the production of XOS through enzymatic hydrolysis using endo- β -1,4-D-xylanase where the enzyme cuts the chain within xylan randomly. XOS is a carbohydrate oligomer with xylose as the monomeric unit and has prebiotic properties. The potential for XOS production from lignocellulosic waste has positive economic prospects, as the demand for prebiotics is increasing in food and pharmaceutical sectors (Goldman, 2009). XOS in this research is produced through hydrolysis of xylan from coffee peel waste by endo- β -1,4-D-xylanase from *Bacillus* sp. of termite abdominal system (Ratnadewi et al., 2007). The enzyme can hydrolyze oat xylan to produce XOS with the component such as xylobiose, xylotriose, xylotetraose and xylopentaose (Ratnadewi et al., 2016). XOS production in this research was

conducted at $40\text{ }^{\circ}\text{C}$, pH 5 and an enzyme dose 23.6 U. Incubation time was varied for 16, 24, 32 and 48 h and the effects of each respective incubation was observed. Specifically the observation measured the total sugar reduction. The data is presented in Fig. 3.

Researchers observed the greatest amount of total reducing sugar between 16-24 h at which point total reducing sugar decreased. It can be inferred that 24 h is the optimum time to hydrolyze xylan into XOS with total reduce sugar measured at 0.334 mg/ml . The decrease of total reducing sugar after 24 h was hypothesized to have caused by decrease of activity of endo- β -1,4-D-xylanase.

Thin layer chromatography was applied to analyze the component of XOS as the product of hydrolysis. The analysis results in separation as shown in Fig. 4. It shows the occurrence of some spot on the hydrolysis products (Line 4 & 6) which is around or parallels with the XOS standards i.e. xylobiose, xylotriose, xylotetraose and xylopentaose (Line 2) and the absence within the area of xylose. Based on this result, the primary components of the XOS are xylobiose (X2), xylotriose (X3), xylotetraose (X4) and xylopentaose (X5) without xylose. Other research has reported that XOS with DP 2 - 3 from garlic straw xylan and XOS with DP 2 - 6 from corn cob have potency as prebiotics (Kallel et al., 2014; Moura et al., 2007). It can be concluded that XOS hydrolysis product of xylan from coffee peel waste by endo- β -1,4-D-xylanase may also have application as prebiotics.

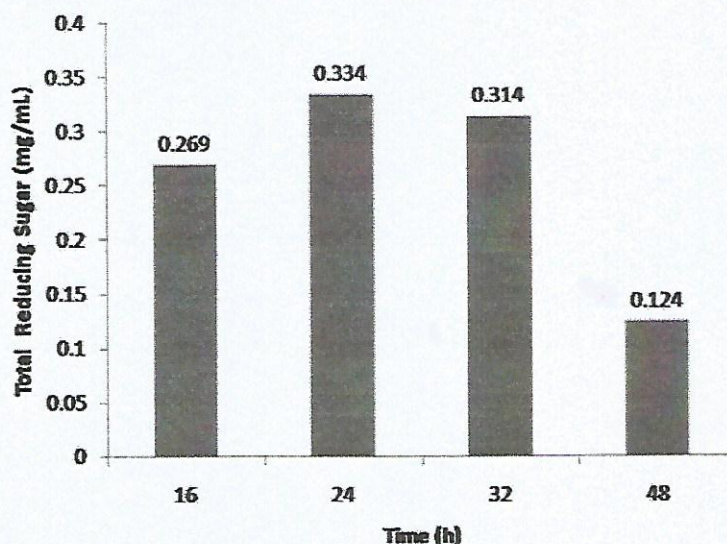


FIGURE 3 - Time course for production XOS generated from xylan coffee peel waste (1 %) using with 23.6 U/mL of endo- β -1,4-xylanase from *Bacillus* sp. of termite abdominal system at pH 5 and $50\text{ }^{\circ}\text{C}$.

C-MS was used for quantitative analysis of each XOS composition arising from xylan hydrolysis. The results of the analysis are presented in Figure 5 and 6. The amount of XOS was determined by comparing the peak area of the sample and the standard. The concentrations of X2, X4, and X6 in the sample are 6.00, 0.802 and 0.832 ppm respectively. It shows that X2 is

the dominant product of xylan hydrolysis by endo-β-1,4-D-xylanase. Achary dan Prapulla (2011) have reported that XOS with DP 2-3 has physiological benefit for human and animals, thus the hydrolysis products of xylan from coffee peel waste may also be used as a substrate for prebiotic productions.

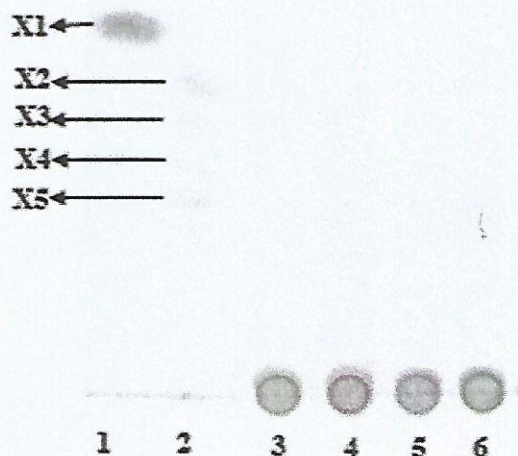


FIGURE 4 - Thin layer chromatogram of component of XOS as the product of enzymatic hydrolysate of xylan from coffee peel waste. Lane 1, xylose (1 µg/µl); 2 XOS standard mixture (1 µg/µl); 3 & 5 control (using inactive enzyme); 4 & 6 XOS generated by 23,6 U of respectively at 40 °C, pH 5 with 24 h of incubation.

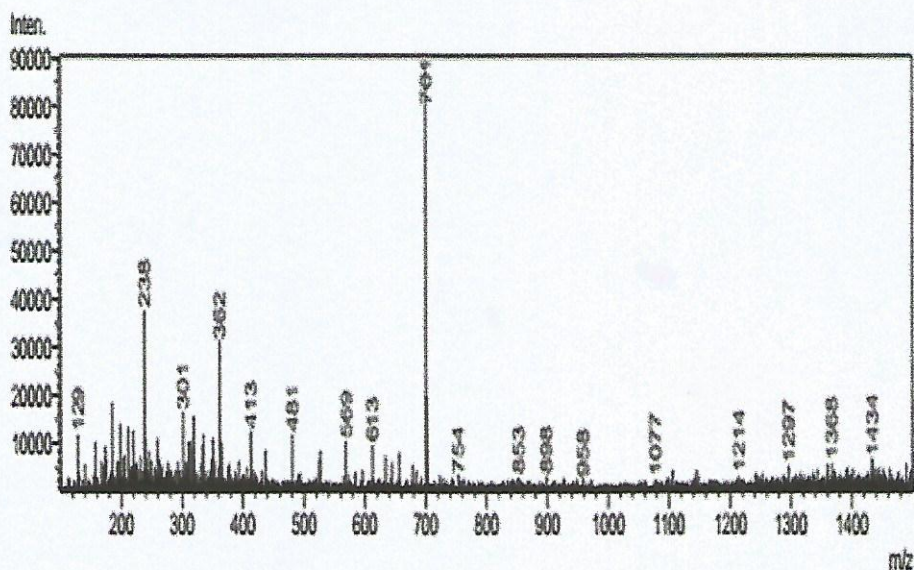


FIGURE 5 - Mass spectra of XOS of enzymatic hydrolysate of xylan from coffee peel waste.

- AKPINAR, O., AK, O.; KAVAS, A.; BAKIR, U.; YILMAS, L. Enzymatic production of xylooligosaccharides from cotton stalks. **Journal Agricultural and Food Chemistry**, 55, 5544-5551, 2007.
- AKPINAR, O.; ERDOGAN, K.; BAKIR, U.; YILMAZ, L. Comparison of acid and enzymatic hydrolysis of tobacco stalk xylan for preparation of xylooligosaccharide. **LWT-Food Science and Technology**, 43, 119-125, 2010.
- AL-SHERAJI, S. H.; ISMAIL, A.; MANAP, M. H.; MUSTAFA, S.; YUSOF, R. M.; HASSAN, F. A. Prebiotic functional foods: A Review. **Journal of Functional Foods**, 5(4), 1542-1553, 2013.
- BRIENZO, M.; CARVALHO, W.; MILAGRES, A. M. F. Xylooligosaccharides production from alkali pretreated sugarcane bagasse using xylanase from *Thermoascus aurantiacus*. **Applied Biochemistry and Biotechnology**, 162, 1195-1205, 2010.
- BURUIANA, C. T.; GÓMES, B.; VIZIREANU, C.; GARROTE, G. Manufacture and evaluation of xylooligosaccharides from corn stover as emerging prebiotic candidates for human health. **LWT-Food Science and Technology**, 77, 449-459, 2016.
- COLOM, X.; CARRILLO, F.; NOGUES, F.; GARRIGA, P. Structural analysis of photodegraded wood by means of FTIR spectroscopy. **Polymer Degradation and Stability**, 80, 543-549, 2003.
- CUMMINGS, J.; MACFARLANE, G.; ENGLYST, H. Prebiotic digestion and fermentation. **American Journal of Clinical Nutrition**, 73(2), 415S-420S, 200.
- DAGLIA, M.; PAPETTI, A.; GREGOTTI, C.; BERTE, F.; GAZZANI, G. In vitro antioxidant and ex vivo protective activities of green and roasted coffee. **Journal of Agricultural and Food Chemistry**, 48, 1449-1454, 2000.
- DA SILVA, A. E.; MARCELINO, H. R.; GOMES, M. C. S.; OLIVIERA, E. E.; NAGHASIMA, T.; EGITO, E. S. T. Xylan, a promising hemicellulose for pharmaceutical use. **Products and Application of Biopolymers**, 61-84, 2012.
- EBRINGEROVA, A.; HROMADKOVA, Z.; MALOVIKOVA, A.; HRIBALOVA, V. Immunomodulatory activity of acidic xylans in relation to their structural and molecular properties. **International Journal of Biological Macromolecules**, 30, 1-6, 2002.
- FAN, L.; PANDEY, A.; SOCCOL, C. R. *Flammulina velutipes* on coffee husk and coffee spent ground. **Brazilian Archives of Biology and Technology**, 44, 205-212, 2001.
- FRANCA, A. S.; OLIVEIRA, L. S.; FERREIRA, M. E. Kinetics and equilibrium studies of methylene blue adsorption by spent coffee grounds. **Desalination** 249, 267-272, 2009.
- GOLDMAN, N. Methods for optimizing enzymatic hydrolysis of xylan to improve xylooligosaccharides yields. **Basic Biotechnology**, 5, 31-36, 2009.
- GOWDHAMAN, D.; PONNUSANI, V. Production and optimization of xylooligosaccharides from corn cob by *Bacillus aerophilus* KJ2 xylanase and its antioxidant potential. **International Journal of Biological Macromolecules**, 79, 595-60, 2015.
- JAYACHANDRA, T.; VENUGOPAL, C.; ANU APPAIAH, K. A. Utilization of phytotoxic agro waste-coffee cherry husk through pretreatment by the ascomycetes fungi *Mycotypha* for biomethanation. **Energy for Sustainable Development**, 15(10), 104-108, 2011.
- KALLEL, F.; DRISS, D.; BOUAZIZ, F.; NEIFER, M.; GHORBEL, R.; CHAABOUNI, S. E. Production of xylooligosaccharides from garlic straw xylan by purified xylanase from *Bacillus mojavensis ueb-fk* and their *in vitro* evaluations prebiotics. **Food and Bioproduct Processing**, 94, 536-546, 2015.
- KONDAMUDI, N.; MOHAPATRA, S. K.; MISRA, M. Spent coffee grounds as a versatile source of green energy. **Journal of Agricultural and Food Chemistry**, 56, 11757-11760, 2008.
- KUMAR, S.; NEGI, Y. S. Corn cob xylan-based nanoparticle: Ester product of 5-aminosalicylic acid for possible targeted delivery of a drug. **Journal of Pharmaceutical Sciences and Research**, 4(12), 1995-2003, 2012.
- LASHERMES, P.; ANDRADE, A. C.; ETIENNE, H. Genomics of coffee, one of the world's largest traded commodities, 2008.

- MACHADO, C. M. M.; SOCCOL, C. R.; OLIVEIRA, B. H.; PANDEY, A. Gibberellic acid production by solid-state fermentation in a coffee husk. **Applied Biochemistry and Biotechnology**, 15, 102–106, 2002
- MEI, G.; CAREY, C.; TOSH, S.; KOSTRZYNSKA, M. Utilization of different types of dietary fiber by potential probiotics. *Canadian Journal of Microbiology*, 57(10), 857-865, 2011.
- MOURA, P.; BARATA, R.; CARVALHEIRO, F.; GIRIO, F.; LOUREIRO, M. C.; ESTEVES, M. P. In vitro fermentation of xylo-oligosaccharides from corn cobs autohydrolysis by *Bifidobacterium* and *Lactobacillus* strains. **LWT**, 40, 963-972, 2007.
- MURTHY, P.S.; NAIDU M. M. Protease production by *Aspergillus oryzae* in solid state fermentation utilizing coffee by-products. **World Applied Science Journal**, 8(2), 199–205, 2010.
- MURTHY, P. S.; NAIDU M. M. Production and application of xylanase from *Penicillium sp.* utilizing coffee by-products. **Food Bioprocess Technology**, 5, 657-66, 2012.
- MUSATTO, S. I.; MACHADO, E. M. S.; MARTIN, S.; TEIXEIRA, J. A. Production, composition, and application of coffee and its industrial residues. **Food Bioprocess Technology**, 4, 661-672, 2011.
- OLIVIERA, E. E.; SILVA, A. E.; JUNIOR, T. N.; GOMES, M. C. S.; AGUIAR, M. A.; MARCELINO, H. R.; ARAUJO, I. B.; BAYER, M. P.; RICARDO, N. M. P. S.; OLIVIERA, A. S.; EGITO, E. S. T. Xylan from corn cobs, a promising polymer for drug delivery: Production and characterization. **Bioresource Technology**, 101, 5402-5406, 2010.
- PENG, F.; REN, J. L.; XU, F.; BIAN, J.; PENG, P.; SUN, R. C. Fractional study of alkali-soluble hemicelluloses obtained by graded ethanol precipitation from sugar cane bagasse. **Journal of Agricultural and Food Chemistry**, Vol. 58: 1768-1776, 2010.
- RAMALAKSHMI, K.; RAO, L. J. M.; TAKANO-ISHIKAWA, Y.; GOTO, M. Bioactivities of low-grade green coffee and spent coffee in different in vitro model systems. **Food Chemistry**, 115, 79–85, 2009.
- RATNADEWI, A. A. I.; HANDAYANI W.; PUSPANINGSIH, N. N. T. Produksi dan karakterisasi, enzim β -endoxylanase dari bakteri sistem intestinal rayap. **Jurnal Ilmu Dasar** 8(2): 110, 2007.
- RATNADEWI, A.A.I; KURNIAWAN, Andika Ade; HANDAYANI, Wuryanti. Optimization pH of Enzymatic Hydrolysis of Endo-1,4- β -Xylanase for Xylooligosaccharides Production. **UNEJ e-Proceeding**, [S.l.], feb. 2016. ISSN 2686-0783. Available at: <<https://jurnal.unej.ac.id/index.php/prosiding/article/view/2478>>
- ROBERFROID, M.; GIBSON, G.; HOYLES, L.; MCCARTENEY, A.; RASTALL, R.; ROWLAND, I.; WOLVERS, D.; WATZL, B.; SZAJEWSKA, H.; STAHL, B.; GUARNER, F.; RESPINDEK, F.; WHELAN, K.; COXAM, V.; DAVICCO, M.; LÉOTOING, L.; WITTRANT, Y.; DELZENNE, N.; CANI, P.; NEYRINCK, A.; MEHEUST, A. Prebiotic effects: metabolic and health benefits. **British Journal of Nutrition**, 104(S2), S1-S63, 2010.
- SAHA, B. C. Hemicelluloses bioconversion. **Journal of Industrial Microbiology and Biotechnology**, 30, 279–291, 2003
- SAMANTA, A. K.; SENANI, S. S.; KOLTE, A. P.; SRIDHAR, M.; SAMPATH, K. T.; JAYAPAL, N. Production and in vitro evaluation of xylooligosaccharides generated from corn cobs. **Food Bioprocess Technology**, 90, 466–474, 2012.
- SAMANTA, A. K.; JAYAPAL, N.; KOLTE, A. P.; SENANI, S.; SRIDHAR, M.; MISHRA, S.; PRASAD, C. S.; SURESH, K. P. Application of pigeon pea (*Cajanus cajan*) stalks as raw material for xylooligosaccharides production. **Application Biochemistry Biotechnology** 169, 2392-2404, 2013.
- SOLANGE I.; MUSSATTO; ERCÍLIA M. S; MACHADO; SILVIA MARTINS; JOSÉ A. Teixeira. Production, Composition, and Application of Coffee and Its Industrial Residues. **Food Bioprocess Technol**, 4, 661-672, 2011.
- VIEIRA, H. D. 2008. Coffee: The plant and its cultivation. **Plant-Parasitic Nematodes of Coffee**, 1, 3-18.
- YANG, H.; YAN, R.; CHEN, H.; LEE, D. H.; ZHENG, C. Characteristics of hemicellulose, cellulose and lignin pyrolysis. **Fuel**, 86, 1781-1788, 2017.
- ZHOU, G.; TAYLOR, G.; POLLE, A. FTIR-ATR-based prediction and modeling of lignin and energy contents reveal independent intra-specific variation of these traits in bioenergy poplars. **Plant Methods**, 7, 1-9, 2011.