

Digital Repository Universitas Jember

ISSN 2621-1351 (Online)

ISSN 2685-0729 (Print)

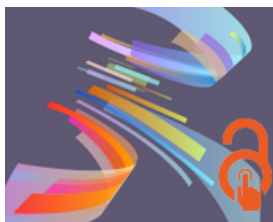


Journal Publicuho

The journal covering studies of state administration, management and public policy, politics, government, global issues, community development and social issues as well as various studies of other social sciences

Laboratory Department of Public Administration
Faculty of Social Science and Political Science
Universitas Halu Oleo
Kendari, Indonesia

OPEN  **ACCESS**



Home > Archives > Vol 4, No 2 (2021)

Vol 4, No 2 (2021)

May - July

DOI: <http://dx.doi.org/10.35817/jpu.v4i2>

Table of Contents

Articles

IMPLEMENTASI PROGRAM PENCIPTAAN WIRAUHAHA BARU TENAGA KERJA MANDIRI DI KECAMATAN TENAYAN RAYA KOTA PEKANBARU	PDF 191-204
<i>Aldira Maulana Ramadhan</i>	
EVALUASI PELAKSANAAN PENGADAAN TANAH UNTUK KEPENTINGAN UMUM DI KABUPATEN KONAWE KEPULAUAN	PDF 205-216
<i>Sulsalman Moita</i>	
DAMPAK PERUBAHAN ORGANISASI PEMERINTAH TERHADAP KOMUNIKASI ORGANISASI	PDF 217-224
<i>Bayu Amengku Praja</i>	
IMPLEMENTASI MODEL CUSTOMER RELATIONSHIP MANAGEMENT UNTUK FUNGSI LAYANAN UMUM PADA ERA TATANAN BARU	PDF 225-238
<i>Mahardhika Berliandaldo, Achmad Chodiq, Sutarno Sutarno, Heru Eko Prasetyo</i>	
PENGARUH ISLAMIC MARKETING TERHADAP KEPUASAN DAN LOYALITAS NASABAH PADA BANK MUAMALAT CABANG MALANG	PDF 239-247
<i>Langgeng Setyono</i>	
DAMPAK ERA NEW NORMAL TERHADAP PEKERJA SEKTOR INFORMAL	PDF 248-258
<i>Lilis Sri Sulistiani</i>	
PENERAPAN PEDOMAN PERILAKU HIDUP BARU DALAM PENCEGAHAN DAN PENGENDALIAN COVID-19 DI KOTA PEKANBARU	PDF 259-270
<i>Nurrahmad Pebriansyah, Febri Yuliani, Adianto Adianto</i>	
GOOD GOVERNANCE: GRANT SERVICE RESEARCH	PDF 271-287
<i>Rizqia Alfiana, Regina Putri Al Zyhra, Yasmin Afandi, Susi Hardjati</i>	
POLITIK KEKERABATAN AGUS AMBO DJIWA PADA PEMILUKADA KABUPATEN PASANGKAYU TAHUN 2020	PDF 288-304
<i>Rusmawaty Rusdin</i>	
DEFISIENSI COLLABORATIVE GOVERNANCE DALAM PENANGANAN PANDEMI COVID-19 DI INDONESIA	PDF 305-314
<i>Martina Purwaning Diah, Ike Arni Noventi, M. Rizki Pratama</i>	
IMPLEMENTASI PROGRAM BANTUAN BAGI PELAKU USAHA MIKRO DI KECAMATAN GUBENG KOTA SURABAYA	PDF 315-325
<i>Moch Rozzaq, Agus Widiyarta</i>	
ANALISIS KEPERCAYAAN PUBLIK TERHADAP KEBIJAKAN VAKSINASI COVID-19 DI KOTA SURABAYA	PDF 326-344
<i>Arimurti Kriswibowo, Josephine Karina Putri Prameswari, Alif Galih Baskoro</i>	
PERSPEKTIF MASYARAKAT DALAM MENGHADAPI TRANSFORMASI PELAYANAN PUBLIK NEW NORMAL DI KOTA MADIUN	PDF 345-359

ADDITIONAL MENU

[Focus and Scope](#)

[Editorial Team](#)

[SOP of Management in manuscript](#)

[Editorial and Publishing Process](#)

AUTHOR LINK

[Publication Ethics](#)

[Author Guidelines](#)

[Journal Template](#)

[Screening For Plagiarism](#)

[Originality Agreement](#)

[Online Submission](#)

[Guideline For Registration and Submission](#)

REVIEWER LINK

[Peer Reviewers](#)

[Reviewer Guidelines & CV](#)

[Peer-Review Process](#)

[Guidelines For Reviewing A Manuscript](#)

[Copyright](#)

[Author Fees](#)

[Contact Us](#)

ACCREDITATION



MEMBER OF



Support GitHub



SCOPUS

EVIDENCE INFORMED POLICY PADA PROGRAM TIKET ONLINE TAMAN SATWA KEBUN BINATANG SURABAYA

Inka Mustika Sari, Arimurti Kriswibowo

PDF
360-370**PENERAPAN COMMUNITY BASED TOURISM DALAM PENGELOLAAN WISATA BERKELANJUTAN DI KAMPUNG GENTENG CANDIREJO**

Ertien Rining Nawangsari, Muhammad Zaky Dharmawan, Nur Sabrina Hana Afifah, Nisrinada Zahrahaini Fajrin

PDF
371-383**EVALUASI KEBIJAKAN PERATURAN PEMERINTAH REPUBLIK INDONESIA NOMOR 66 TAHUN 2015 MENGENAI MUSEUM PADA MUSEUM MPU TANTULAR**

Endik Hidayat, Jennifer Jennifer, Dewi Rahmawati, Nesy Hari Pratiwi

PDF
384-399**KUALITAS PELAYANAN PERPUSTAKAAN KELILING DI DINAS PERPUSTAKAAN DAN KEARSIPAN KABUPATEN KOTAWARINGIN TIMUR**

Binti Azizatul Nafi'ah, Saffa Indah Salsabila, Laili Khikmawati, Shalena Anggi Christy

PDF
400-410**PEMBERDAYAAN MASYARAKAT MELALUI KELOMPOK PUSAT PELATIHAN PERTANIAN DAN PEDESAAN SWADAYA (P4S) "MERI REJEKI" DESA REJOSOPINGGIR**

Arimurti Kriswibowo, Madania Uki Anindita, Isna Yunita Sari, Rofiah Inggil Pangestu

PDF
411-419**EVALUASI DAMPAK KEBIJAKAN PROGRAM PEMBERDAYAAN PEREMPUAN PENGEMBANG EKONOMI LOKAL (P3EL) DI KABUPATEN SIDOARJO**

Sri Wibawani, Fadiyah Suci Rahmadini, Safitri Nur Laili

PDF
420-432**ANALISIS FAKTOR KINERJA ORGANISASI BADAN KESATUAN BANGSA DAN POLITIK KOTA SEMARANG**

Aninda Puri, Hafidha Putri S, Adita Nurshabrina, Susi Hardjati

PDF
433-446**EFEKTIVITAS PROGRAM PEJUANG MUDA DALAM PENGENTASAN KEMISKINAN DI KOTA SURABAYA**

Amelia Jihan Fahnanda, Ruth Theda Rahmadevi, Moch. Faizal Syahputra, Calvin Edo Wahyudi

PDF
447-456**IMPLEMENTASI KEBIJAKAN DISIPLIN DAN PENEGAKAN HUKUM PROTOKOL KESEHATAN SEBAGAI UPAYA PENCEGAHAN DAN PENGENDALIAN COVID-19 DI KECAMATAN JOMBANG KABUPATEN JOMBANG**

Evi Wahyuni, Diana Hertati

PDF
457-471**IMPLEMENTASI KEBIJAKAN OPERASI YUSTISI PROTOKOL KESEHATAN DI KABUPATEN SIDOARJO**

Arthemevia Indhawati, Putra Riyan Izzuddin, Muhammad Aulia Yahya, Susi Hardjati

PDF
472-486**SINERGI STAKEHOLDER DALAM MENANGANI ANCAMAN PENYELUNDUPAN NARKOBA DI PROVINSI ACEH**

Dhimas Rudy Hartanto, Artha C. Rosevina Anak Ampun, Endyka Triono Dachi, Surya Wiranto, M. Adnan Madjid

PDF
487-500**IMPLEMENTASI KEBIJAKAN VAKSINASI COVID-19 DI KOTA SURABAYA**

Muhammad Akbar Asyafin, Diaz Virdani, Kiki Darma kasih, Lukman Arif

PDF
501-510**THE EFFECTIVENESS OF SCHOOLGY ON TECHNOLOGY SKILLS: E-LEARNING INTEGRATION IN EDUCATION**

Rully Putri Nirmala Puji, Desi Priyanti

PDF
511-519**IMPLEMENTASI INSENTIF PAJAK UMKM DI ERA COVID-19 DI KECAMATAN GEDANGAN KABUPATEN SIDOARJO**

Alfi Huurin Iin, Septrian Jihan Aulia Fistabella, Adellia Nanda Savira, Calvin Edo Wahyudi

PDF
520-535**EVALUASI PELAYANAN VAKSIN COVID - 19 (STUDI KASUS PUSKESMAS MOJO KOTA SURABAYA)**

Maharani Ulya Fadhillah, Umi Fauziyah, Adellia Ammertia Cahyani, Lukman Arif

PDF
536-552**PENGARUH KUALITAS LAYANAN DAN PENYEDIAAN FASILITAS TERHADAP KEPUASAN KONSUMEN DI ERA PANDEMI COVID19 (Studi Kasus Penumpang KA PT KAI (Persero))**

Ananta Prathama, Ayunda Nabila Mauliddia, Daniar Seri Firdausi

PDF
553-569**PENERAPAN TEKNOLOGI INFORMASI DAN KOMUNIKASI PADA SISTEM PELAYANAN PUBLIK DINAS KOMUNIKASI DAN INFORMASI KOTA BAU-BAU**PDF
570-580

Google Scholar

TOOLS

REFERENCE
MANAGER

PlagScan by Original



JOURNAL CONTENT

Search

Search Scope

All

Search

Browse

► By Issue

► By Author

► By Title

► Other Journals

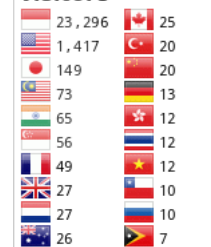
► Categories

OPEN JOURNAL SYSTEMS

JOURNAL HELP

VISITOR STATISTICS

Visitors



Pageviews: 90,737



000031656

View Journal Publicuho Stats

USER

 Remember me

EFEKTIVITAS PELAKSANAAN PROGRAM PELATIHAN PENGEMBANGAN DESAIN KEMASAN PRODUK BATIK SEMANGGI SURABAYA*Susi Hardjati, Muchlisiniyati Safeyah, Kalvin Edo Wahyudi*PDF
581-590

KEYWORDS

COVID-19 Community Based
Tourism Covid-19 Development
Effectiveness
Implementation Income
Land acquisition Management
Performance Policy Public Policy
Public Service Public service
Retribution Revitalization Service
Quality Strategy Village covid-19
regional head elections

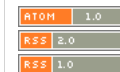
PENERAPAN COMMUNITY BASED TOURISM (CBT) DALAM PENGEMBANGAN DESA WISATA DI DESA SEKAPUK KECAMATAN UJUNGPAKANGAH KABUPATEN GRESIK*Maslakhatun Niswah, Tukiman Tukiman*PDF
591-601**ANALISIS KINERJA PEGAWAI PADA DINAS PENANAMAN MODAL DAN PELAYANAN TERPADU SATU PINTU KOTA PEKANBARU (Studi dalam pelaksanaan pelayanan izin mendirikan bangunan)***Trio Fernando, H M Saeri, Munchid Albintani*PDF
602-611

INFORMATION

- For Readers
- For Authors
- For Librarians

KUALITAS PELAYANAN UPTD PUSKESMAS PERAWATAN BARU ULU DI KOTA BALIKPAPAN PADA TAHUN 2020*Endik Hidayat, Lidya Britania Putong, Maria Veronika Andarista, Hidayati Syan Yumna*PDF
612-626

CURRENT ISSUE

**FAKTOR-FAKTOR PENGHAMBAT PEMBELAJARAN ONLINE PADA MASA PANDEMI COVID-19 DI SMA NEGERI 1 KUANTAN MUDIK KABUPATEN KUANTAN SINGINGI***Vira Mayang Sari, Zaili Rusli, Febri Yuliani*PDF
627-635**PELAYANAN POS PELAYANAN TERPADU DESA BAKUNGTEMNGGUNGAN KEC. BALONGBENDO KAB. SIDOARJO PROVINSI JAWA TIMUR DI ERA PANDEMI***Novia Dia Kumala, Sukma Asmaning Putri, Efa Rohmatin Febrian, Ananta Prathama*PDF
636-646**IMPLEMENTASI KEBIJAKAN PENGELOLAAN PASAR RAKYAT PADA PASAR BUDURAN KABUPATEN SIDOARJO***Erry Pratama, Diana Hertati*PDF
647-660

=====JPU=====

JOURNAL PUBLICUHO has been covered by the following indexes:



Universitas Halu Oleo Kendari

Mailing:

Laboratorium Jurusan Ilmu Administrasi Publik
Fakultas Ilmu Sosial dan Ilmu Politik
Universitas Halu Oleo, Kendari, Indonesia

Address: Kampus Hijau Bumi Tridharma, Anduonohu, Kec. Kambu, Kota Kendari, Sulawesi Tenggara 93232, Indonesia.**Phone:** (0401) 3190105 | Close in Sunday and public holidays in Indonesia**Contact E-Mail:** muh.elwan@uho.ac.id / 085397364343**Website:** https://www.uho.ac.id/

Journal Publicuho is licensed under a Creative Commons Attribution 4.0 International License.



THE EFFECTIVENESS OF SCHOOLGY ON TECHNOLOGY SKILLS: E-LEARNING INTEGRATION IN EDUCATION

¹ Rully Putri Nirmala Puji, ² Desi Priyanti

^{1,2} History education, Universitas Jember, Indonesia

rully@unej.ac.id

Jember, East Java, Indonesian

Abstract

Schoology is an e-learning platform that offers several exciting features that can be optimized by educators and students in tandem with parents. This can be one of the media in optimizing strong communication between the three. Schoology is also able to be one of the pathways to improving the skills in utilizing the technology of students who have also become one of the demands of the 4.0 revolution. Schoology is able to be used by educators in particular types of education and in certain subjects. This study aims to identify the effectiveness of Schoology on the technology skills of students in higher education ranking. The research results have shown that Schoology poses an effect on improving technology skills in aspects of text formatting and searching the web.

Keywords: E-Learning; Schoology; Technology Skills

Abstrak

Schoology merupakan salah satu platform e-learning yang menawarkan beberapa fitur menarik yang dapat dioptimalisasi oleh pendidik dan peserta didik bersama dengan orang tua. Hal ini mampu menjadi salah satu media dalam mengoptimalkan komunikasi yang intens antara ketiganya. Schoology juga mampu menjadi salah satu cara dalam meningkatkan keterampilan pemanfaatan technology peserta didik yang turut menjadi salah satu tuntutan dari revolusi 4.0. Schoology mampu dimanfaatkan oleh seluruh pendidik dalam jenjang pendidikan tertentu dan dalam mata pelajaran tertentu. Penelitian ini bertujuan untuk mengidentifikasi efektifitas schoology terhadap technology skills peserta didik di peringkat pendidikan tinggi. Hasil penelitian menunjukkan bahwa schoology memberikan effect terhadap peningkatan technology skills pada aspek text formatting dan searching the web.

Keywords: Keterampilan Teknologi; Pembelajaran online; Schoology

INTRODUCTION

The development of the Industrial Revolution 4.0 in this digital era requires all parties to be adaptive to the use of technology. Implementation of technology in education can be actualized through the use of e-learning based learning processes. Based on the results of a survey on 30 students in tertiary education, empirics show that the evaluation using e-learning in the lecturing is still very rare with a mean value of 2.13 (SD = 0.82). Industrial revolution 4.0 requires all aspects to utilize information-technology in all lines. Education is one of the aspects that really need the use of technology to improve the quality of learning (Puji, 2015; Puji 2019). This needs to be explored in more depth, whether all educators already have the awareness and knowledge of the importance of the existence of the use of technology in this digital age. Utilization of technology in the learning process can be implemented through the mastery of communication languages, disseminating ideas, and information through technical assistance and making learning systems accessible to anyone and anywhere (Hussin, 2018).

Indonesia is ranked seventh out of 10 ASEAN countries (Association of Southeast Asian Nations) in terms of information technology development index (Boekaerts, M, 2002). This shows that Indonesia needs to improve itself in seeking ways to improve the quality of information technology. The country with the highest technology development index in the ASEAN region is Singapore. This country is able to adapt information technology satisfactorily. The low index of information technology development in Indonesia also has an impact on the low index of human development.

The number of internet users in Indonesia has increased in the last five years. Based on the results of a survey conducted by the Indonesian Internet service providers association, the level of student internet use is still very low. This is indicated by the value of the composition of student internet use by 7.8%, with a total of 10.3 Million users. This is certainly inversely proportional to the assumption that students should have higher intensity in accessing the internet, for example, such as searching for learning resources, articles, and journals as well as the use of e-learning.

Schoolgy is one of the e-learning arsenals that can function as a medium of learning, a source of learning, evaluation of learning, and a tool of communication among educators, students, and parents (Creswell, 2017; Alamsyah, 2020; Hidayah; 2020; Puji 2018). Schoolgy is an e-learning tool that can provide some interesting features needed to provide excellent facilities in the learning process. Schoolgy has several advantages, compared to other e-learning tools. Research conducted by Sarrab, et al classifies the advantages of Schoolgy based on five categories, including availability, usability, dependability, functionality, and performance. The Schoolgy has the advantage of providing English, which is an

international language in 135 countries. This makes it easy for users to communicate globally and internationally (Sarrah, 2015).

Schoology in principle has the advantage of having a good integration connection with several accounts or other applications such as Google Docs, Google Drive, and so on. This certainly accrues a positive value and results in optimizing the use of Schoology in learning. Access to save files using the cloud will make it easier for educators and students to share files and documents such as learning resources, learning material or test kits, etc.

Schoology access to Turnitin also educates students to be able to account for the work done academically from the effects of plagiarism. In this usability principle, it seems that Schoology also has shortcomings, pertinent to uploading of tasks that are slightly delayed when the content contains filling images and videos in large file capacities.

The third principle is Dependability. In this principle, it seems that Schoology has a disadvantage, it is difficult for users to modify the features and appearance desired, and according to their needs. This is certainly different from the Moodle application, which provides advantages and opportunities for educators to adapt the e-learning Moodle to the learning needs. Schoology on the principle of Functionality has advantages compared to other e-learning tools. Schoology has good functional value. This requires the support and cooperation of related parties to provide good functional value. Schoology has high functional value as long as it is integrated well with the school's reporting and supervision system and the information system under the school management and its users' government (Sarrah, 2015; Puji 2018).

Based on the evaluation of Schoology's performance, this platform is found to offer easily accessible online by using social networking platforms. This will have a positive impact on academic users, namely increased communication development and collaboration capabilities for each user. This is caused by features and easy access to Schoology that can create a conducive and intense learning process.

The era of digitalization encourages people to utilize technology in all aspects. This relates to the need for globalization of fast work access and data management to be better coordinated. Technological developments need to be adjusted to the needs and interests of education itself (Taleb, 2013; (Puji, 2018); Puji 2020). The need for mastery of technology in one particular field has differences from other fields. The mastery of technology in education needs to be adjusted to the needs of the students themselves (Pintrich 1999, Pintrich 2003). Indicators of technology skills in education according to Taleb include (1) familiarity with data security; (2) entering text; (3) basic concepts of internet and browser; (4) file management; (5) using the word processor; (6) basic file management concepts; (7) working with icons; (8) formatting a text; (9) navigation of web pages; (10) familiarity with copyright & data

protection; (11) searching the web; (12) text editing with software; and (13) basic concepts of electronic communication and Bookmark a webpage (Talleb, 2013).

METHODOLOGY

This study aims to identify the effectiveness of the application of Schoology to students' technology skills. Technology skills in this study focus on aspects of formatting text and browsing the web (Talleb, 2013). This study deploys an experimental research design involving 30 students in tertiary institutions. Table 1 displays the demographic data in the study. This research uses quantitative data analysis using SPSS, a paired sample T-test.

Table 1. Demographic Data

No	Demographic	N	%
1	Male	15	50%
2	Female	15	50%

This study makes use of an achievement test as the data collection instrument. Students had to sit a pre-test to measure their technology skills in aspects of formatting text and searching the web. After that, the educators were required to implement Schoology and gave a post-test at the end of the learning. The test conducted to test students' ability in formatting text involved designing historical infographics and searching the web for collecting reputable international journals aimed to develop History learning materials. Pre- and post-test tests were carried out using paired sample t-test with data analysis aids in the form of SPSS (Statistical Product and Service Solutions) (Cleland, 2005).

RESULTS AND DISCUSSION

1. Schoology

E-Learning employs the assistance of services/electronic devices. e-Learning is a web application that utilizes the internet. e-Learning has a flexible value in its use even though it is limited by distance and internet network capabilities. Schoology is an e-learning tool that can be utilized by all educators in all subjects. The first step to register for Schoology is to go to the page <https://www.Schoology.com/> to register for a Schoology account. After going to the page above, the next step is to choose the type of account that is as a teacher/instructor, student/learners, and the third is the parents. In this section, we pretend to register as a teacher to find out what features can be utilized in the learning process.

The registration process is done by entering an email and password account in accordance with the users' needs. The verification process is done by sending a notification to the e-mail registered. This process is essential to ensure that account stability and verification can be carried out properly. In addition, we can also get notifications of the latest information about Schoology updates via email. After the registration process is complete, the next step is creating a class. The process of adding classes is adjusted to the class level and the academic level of students.

The next step is to add materials to the Schoology account. Schoology has materials with religious types including (1) assignment; (2) quiz; (3) file or external tool; (4) discussion; (5) page; (6) album media; and (7) package. Schoology has the advantage of providing facilities for loading multiple learning resources in various formats such as (1) file/document; (2) link; (3) PowerPoint slide; (4) picture; (5) photo; and (6) video. Quiz and evaluation forms that can be accessed in Schoology include the following: (1) true-and-false items; (2) multiple-choice questions; (3) ordering; (4) short answer; (5) fill in the blank; (6) matching.

Schoology is an e-learning platform that has complete facilities and features. Schoology is one of the e-learning programs that are of interest to educators and students. This is due to the completeness of features such as learning games, quizzes, and some interesting material (Sugiyanto, 2018). Schoology has numerous similarities with Edmodo. Both of them offer complete features in helping the learning process. Schoology and Edmodo have their own advantages and disadvantages compared to others. Broadly speaking, students are more motivated by the use of media or mobile and electronic-based learning platforms. Time and duration of learning also contribute to the success of learning (Brinkerhoff, 2006). Schoology has advantages in terms of effective use of time and duration. Schoology can be accessed quickly, anywhere, and anytime.

The educational aspect needs to utilize the use of technology as a learning device. Today's education has placed technology as a medium and source of learning that can increase learning productivity (Sanchez, 2018; vibulphol, 2016). Educators apply technology not only for administrative purposes and office matters but also for instructional purposes. The readiness to use technology is also one of the success factors in learning. Educators' skills and knowledge also influence the use of technology in learning (Randal, 1999). The use of technology in learning needs to be optimized and evaluated for effectiveness (Russel, 2006; Boekaerts, 2002; Cleland, 2005). Evaluation of the use of technology in education serves to improve the quality of learning to meet the needs of students and learning objectives (Russel, 2006). Educators need technology that varies in each learning to create interactive classes. Some learning practices utilizing technology are laden with developing interactive websites, processing information and databases, creating discussion forums, and communicating using email.

2. The Effectiveness of Schoology for Propelling Students' Technology skills

The pre-test is conducted for students in the history of education in the higher education ranking. The test is conducted with the assessment of the technical skills of students on aspects of formatting text and searching the web. The following chart shows the results of the pre-test and post-test carried out.

Tests using paired sample t-tests belong to the parametric statistical tests. Before carrying out

paired sample t-test on the ability of text formatting and searching the web of students, the initial step is to satisfy the assumptions or requirements for parametric statistical tests. These requirements and assumptions are tests of normality. The table showcases the normality test results.

Diagram 1. Technology skills test

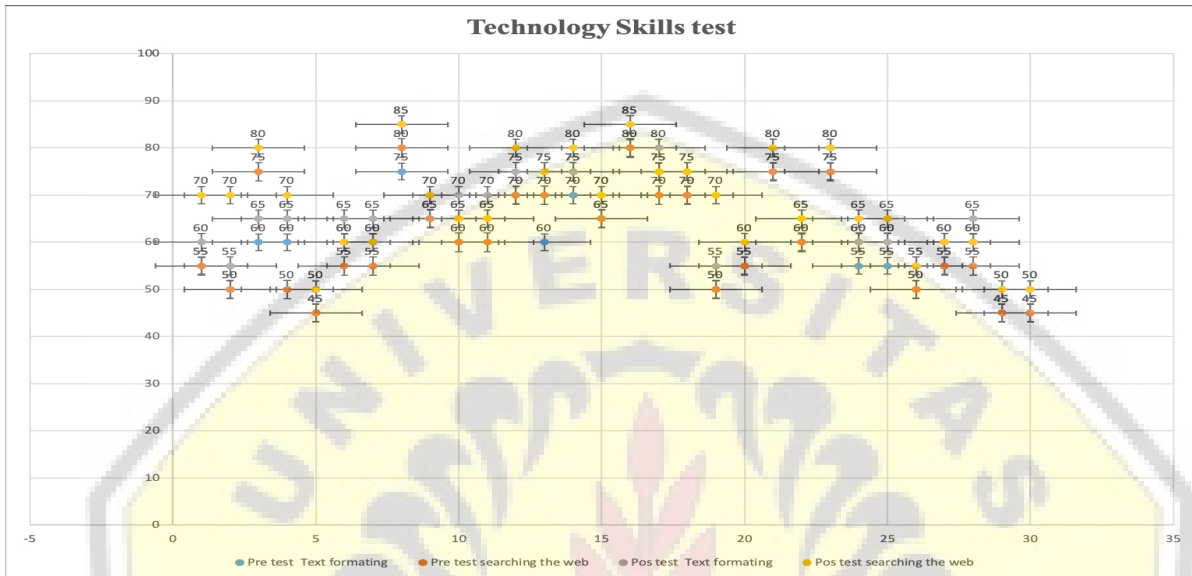


Table 2. Data Normality Test

	Kolmogorov-Smirnov ^a			Shapiro-Wilk		
	Statistic	p.	Sig.	Statistic	df	p.
Pre TF	0,141	30	0,134	0,954	30	0,214
Pre SW	0,151	30	0,080	0,936	30	0,070
Post TF	0,125	30	0,200	0,956	30	0,242
Post SW	0,153	30	0,072	0,929	30	0,045

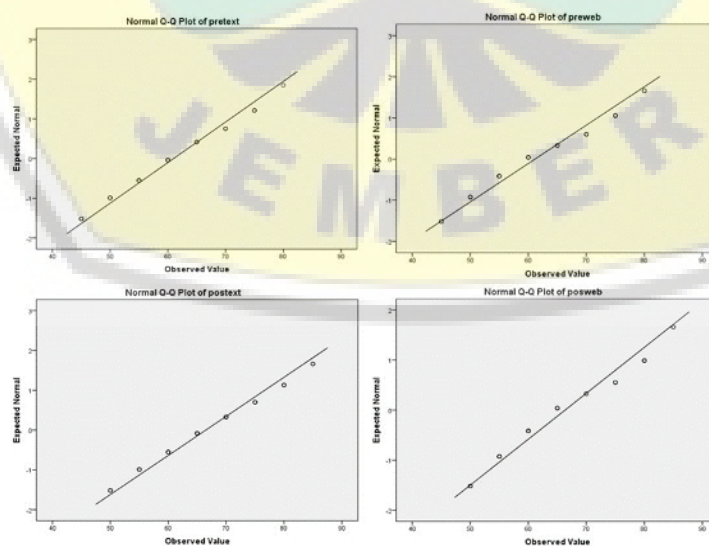


Figure 1. Normal Q-Q Plot

*TF = Text formatting

SW = Searching the web.

The normality test shows that the data are normally distributed with the Kolmogorov Smirnov value related to pre-test scores in-text formatting = 0.134 > 0.005; post-test scores in searching the web = 0.080 > 0.005; post-test scores in formatting text = 0.200 > 0.005; pre-test scores in searching the web = 0.072 > 0.005. Based on the assumption of normality, a paired sample t-test can be carried out. Hereunder are the results of paired sample t-test pre and post technology skills on the aspects of text formatting and searching the web.

Table 3. Paired Sample t-test of Experiment Class

	\bar{x}	σ	Cor	Lower	Upper	t	α	p.
PreTF	61,00	9,77	0,980	-6,251	-4,74	-14,9	0.005	0,000
PostTF	66,50	10,18						
PreSW	61,16	10,72	0,894	-8,808	-5,19	-7,91		0,000
PostSW	68,16	10,12						

$$\begin{aligned}
 \text{Eta Squared TF} &= \frac{t^2}{t^2 + (N-1)} \\
 &= \frac{-14,966^2}{-14,966^2 + (30-1)} \\
 &= \frac{223.981}{223.981 + (29)} \\
 &= \frac{223.981}{353.982} \\
 &= \boxed{0,632}
 \end{aligned}$$

$$\begin{aligned}
 \text{Eta Squared SW} &= \frac{t^2}{t^2 + (N-1)} \\
 &= \frac{-7,918^2}{-7,918^2 + (30-1)} \\
 &= \frac{62,694}{62,694 + (29)} \\
 &= \frac{62,694}{91.694} \\
 &= \boxed{0,683}
 \end{aligned}$$

The table above shows that there is a significant difference between pre-text and post-text scores in formatting text, M = 61.00, SD = 9,773 and M = 66.50, SD = 10.183, respectively. t (29) = -14,966, p 0,000 < 0.005 (two tailed). The increase in mean score with a 95% confidence

interval ranges from -6,251 to -4,748. Eta squared statistics (0.632) indicate moderate effects (Cohen, 1988). In addition, this data also shows that there are significant differences between web searching (M = 61.16, SD = 10.722) and web searching post (M = 68.16, SD = 10.127), $t(29) = -7.918$, $p 0,000 < 0.005$ (two tailed). The increase in mean 7 with 95% confidence interval ranges from -8,808 to -5,191. Eta squared statistics (0.683) indicate moderate effects [10]. The data shows that the application of Schoology is able to give effect to the improvement of technology skills aspects of text formatting and searching the web.

CONCLUSIONS

Schoology is an e-learning platform that offers several interesting features that can be optimized by educators, students, and parents in tandem. This platform can be one of the media in optimizing intense communication between the three. Schoology is also able to be one of the ways to improve the skills in utilizing the technology of students who have also become one of the demands of the 4.0 revolution. The research results have shown that Schoology offers the effectiveness of escalating students' technology skills concerned with text formatting and searching the web. Schoology needs to be applied and utilized in learning to streamline the learning process and improve students' learning outcomes.

REFERENCE

- Alamsyah M R B, Puji RPN and Soepeno B 2020 Information media on historical tourism: probing into public perspectives in Jember regency IOP Conf. Ser.: Earth Environ. Sci. 485 012138
- Boekaerts, M. (2002). Motivation to learn. *Human Resource Development Quarterly*, 15(3), 1–27.
- Brinkerhoff, J. (2006). Effects of a Long-Duration, Professional Development Academy on Technology Skills, Computer Self-Efficacy, and Technology Integration Beliefs and Practices, 39(1).
- Cleland, J., Foster, K., & Moffat, M. (2005). Undergraduate students' attitudes to communication skills learning differ depending on year of study and gender, (May 2015). <https://doi.org/10.1080/01421590400029541>
- Cohen, J. (1988). *Statistical power analysis for the behavioral sciences* (2nd ed.). Hillsdale, NJ: Lawrence Earlbaum Associates.
- Creswell, J. W. (2017). *Research design: qualitative, quantitative, and mixed methods approaches*. (Vol. 91). SAGE Publications, Inc. All.
- Hidayah B, Na'im M, Puji RPN 2020 Technological content knowledge of history teachers in Jember IOP Conf Series: Earth And Environmental Science 485 012132 doi:10.1088/1755-1315/485/1/ 012132
- Hussin A A 2018 *Education 4.0 Made Simple: Ideas For Teaching*, (c), 92–98.
- Randal, D., & John, S. (1999) *Mentoring Pre-Service Teachers for Technology Skills Acquisition*.
- Russell, G. et al. (2006). Information technology skills of Australian teachers: implications for teacher education of Australian Teachers : <https://doi.org/10.1080/1475939000200087>

- Russell, G., Finger, G., Russell, N., Russell, G., Finger, G., Russell, N. Russell, N. (2006). Information technology skills of Australian teachers : implications for teacher education of Australian Teachers : <https://doi.org/10.1080/14759390000200087>
- Pintrich, P. R. (1999). The role of motivation in promoting and sustaining self-regulated learning, 31, 459–470.
- Pintrich, P. R. (2003). A Motivational Science Perspective on the Role of Student Motivation in Learning and Teaching Contexts, 95(4), 667–686.
- Priskila, M., N. Umamah, RPN, Puji. 2018. Interactive Multimedia Based On Computer Assisted Instruction : Development Efforts on the Learning Interest and Effectiveness in the History Learning. Volume 5 issue 6.
- Puji RPN and Ahmad AR 2015 Learning Style of MBTI Personality Types in History Learning at Higher Education Scientific Journal of PPI-UKM 3 289
- Puji RPN and N. Umamah. 2018. Edmodo Multimedia: Supporting Technology for Media Learning at Higher Education. International Journal of English Literature and Social Sciences.
- Puji RPN and Sumarno. (2019). Plastic waste product development: Environment preservation efforts. OP Conference Series: Earth and Environmental Science. Vol 243. Issue 1
- Puji RPN et al 2020 The Students' Prior Knowledge at The Department of History Education within Tertiary Education IOP Conf Series: Earth And Environmental Science 485 012041 doi:10.1088/1755-1315/485/1/012041
- Sanchez Garcia, L. F., Sebasti a-Amat, S., Molina Garcia, N., & Saiz Colomina, S. (2018). Schoology As an Alternative To Traditional Teaching Tools for University Students. EDULEARN18 Proceedings, 1 (July), 7514–7520.
- Sarrab, M, Al-Shihi, H., & Al-Manthari, B 2015 System Quality Characteristics for Selecting Mobile Learning Applications. Journal of Distance Education, 16, 18–27. Sarrab,
- Sugiyanto, S.A. (2018). Comparison of mobile learning applications in classroom learning in vocational education technology students based on usability testing Comparison of mobile learning applications in classroom learning in vocational education technology students based on usability testing.
- Taleb, Z. (2013). Information and Communication Technology Skills Ranking in Secondary School Curriculum. Procedia-Social and Behavioral Sciences, 69(Iceepsy), 1093–1101.
- Vibulphol, J. (2016). Students' Motivation and Learning and Teachers' Motivational Strategies in English Classrooms in Thailand. English Language Teaching, 9(4), 64. <https://doi.org/10.5539/elt.v9n4p64>
- Worth, R. (2004). Communication Skills, Second Edition.