

**MAKALAH ILMIAH
PROSIDING SEMINAR INTERNASIONAL
TERINDEKS SCOPUS**

**The 7 International Conference on Electrical Engineering,
Computer Science and Informatics (EECSI 2020)**



Judul:
Intelligent Wheelchair Control System based on Finger Pose
Recognition

disusun oleh:
Iswahyudi, Khairul Anam, Azmi Saleh

**JURUSAN TEKNIK ELEKTRO
FAKULTAS TEKNIK
UNIVERSITAS JEMBER
2021**



PROCEEDING

2020 7th International Conference on
Electrical Engineering, Computer Science
and Informatics (EECSI 2020)

October 1-2, 2020

Yogyakarta, Indonesia



Co-organizers:





PROCEEDINGS

**7th International Conference on Electrical Engineering,
Computer Science and Informatics (EECSI) 2020**

October 1-2, 2020
Yogyakarta – Indonesia
(Virtual Conference)

Editors:

Auzani Jiddin (UTeM, Malaysia)

M Amjad (Islamia University of Bahawalpur, Pakistan)

Nuryono Satya Widodo (UAD, Indonesia)

Imam MI Subroto (UNISSULA, Indonesia)

PROCEEDINGS

7th International Conference on Electrical Engineering, Computer
Science and Informatics (EECSI) 2020



Copyright © 2020 Institute of Advanced Engineering and Science (IAES)
All Rights Reserved

***This publication is a representation of what appears in the IEEE Digital Libraries. Some format issues inherent in the e-media version may also appear in this print version.

IEEE Catalog Number: CFP20B51-PRT, ISBN : 978-602-0737-61-4 (PRINT)
IEEE Catalog Number: CFP20B51-ART, ISBN : 978-602-0737-62-1 (DIGITAL
/XPLORE COMPLIANT)

Additional Copies of This Publication Are Available From:

Curran Associates, Inc
57 Morehouse Lane
Red Hook, NY 12571 USA
Phone: (845) 758-0400
Fax: (845) 758-2633
E-mail: curran@proceedings.com
Web: www.proceedings.com

Foreword from General Chair EECSI 2020

In the name of Allah, Most Gracious, Most Merciful

Welcome to the 7th International Conference on Electrical Engineering, Computer Science and Informatics (EECSI 2020). The 7th EECSI 2020 provides platform for researchers, academicians, professionals, and students from various engineering fields and with cross-disciplinary working or interested in the field of Electrical Engineering, Computer Science, and Informatics to share and to show their works and findings to the world.

This year, the conference is held virtually, due to the pandemic issue which prevent authors and participants to travel. I would like to express my hearty gratitude to all participants for sharing and presenting your experiences in this virtual conference. Only high-quality selected papers are accepted to be presented in this event, so we are also thankful to all the international reviewers and steering committee for their valuable work. I would like to give a compliment to all partners in publications and sponsorships for their valuable supports.

Organizing such an prestigious conference was incredibly challenging and would have been impossible without our outstanding committee, so I would like to extend my sincere appreciation to all committees and volunteers from Universitas Ahmad Dahlan as a host and all colleagues from Universitas Diponegoro, Universitas Sriwijaya, Universitas Islam Sultan Agung, Universitas Muhammadiyah Malang, Universitas Budi Luhur and IAES Indonesia Section for providing me with much needed support, advice, and assistance on all aspects of the conference. A special thanks for IEEE Indonesia Section for the technical co-sponsorship during the conference. We do hope that this event will encourage the collaboration among us now and in the future.

We wish you all find opportunity to get rewarding technical program, intellectual inspiration and forge innovation. Stay at home, stay safe, and be productive.

Assoc. Prof. Dr. Tole Sutikno
General Chair, EECSI 2020

Foreword from IAES Indonesia Section

Bismillahirrohmannirrahim,
Assalamualaykum warohmatullahi wabarakatuh and Good Day,
Ladies and Gentlemen,

We would like to welcome our colleagues to attend the International Conference on Electrical Engineering, Computer Science and Informatics (EECSI 2020) on 1-2 October 2020.

I hope this event will become a great event for researchers, engineers and professionals to strengthen ties and partnerships and their findings and development to the world in the field of electrical, computer, and informatics. This year, the conference is held virtually using Zoom Conference platform, however, I believe the quality of conference can be maintained in the high level.

Institute Advanced Engineering and Science (IAES) collaborating with Universitas Diponegoro, Universitas Islam Sultan Agung, Universitas Sriwijaya, Universitas Budi Luhur and Universiti Teknologi Malaysia as several tops universities have successfully organized the conference six times since year 2014. This achievement is due to valuable contributions also from our colleagues from Universitas Ahmad Dahlan. I would like to express my sincere gratitude and appreciation for all partners, friends, organizing committee, reviewers, keynote speakers, and participants who have made this event as a key stage to show great development to the world as today.

I would also like to extend my gratitude to Rector of Universitas Ahmad Dahlan, academia and supporting staffs who become a main host and IEEE Indonesia section as a technical co-sponsor for EECSI 2020.

Stay safe, and stay strong.

Thank you.

Assoc.Prof. Mochammad Facta, Ph.D
IAES – Indonesia Chapter

Organizing Committee EECSI 2020

Advisor

- Muchlas, Universitas Ahmad Dahlan, Yogyakarta, Indonesia
- Rusydi Umar, Universitas Ahmad Dahlan, Yogyakarta, Indonesia
- Pekik Argo Dahono, IEEE Indonesia Chapters Chair (EdSoc/EDS/PELS/SPS)
- Hermawan, Universitas Diponegoro, Semarang, Indonesia
- Zainudin Nawawi, Universitas Sriwijaya, Palembang, Indonesia
- Rahmat Budiarto, Albaha University, Baha, Saudi Arabia
- Sri Arttini Dwi Prasetyowati, Universitas Islam Sultan Agung, Semarang, Indonesia
- Deni Mahdiana, Universitas Budi Luhur, Jakarta, Indonesia
- Wisnu Jatmiko, Universitas Indonesia (IEEE Indonesia Section)

General Chair

- Tole Sutikno, Ahmad Dahlan, Yogyakarta, Indonesia

General Co-Chair

- Munawar Agus Riyadi, Universitas Diponegoro, Semarang, Indonesia
- Anton Yudhana, Universitas Ahmad Dahlan, Yogyakarta, Indonesia

Finance Chairs and Treasurer

- Wiwiek Fatmawati, Universitas Islam Sultan Agung, Semarang, Indonesia
- Lina Handayani, Universitas Ahmad Dahlan, Yogyakarta, Indonesia

Program Chairs

- Mochammad Facta, Universitas Diponegoro, Semarang, Indonesia
- Nuryono Satya Widodo, Universitas Ahmad Dahlan, Yogyakarta, Indonesia
- Muhammad Syafrullah, Universitas Budi Luhur, Jakarta, Indonesia
- Zulfatman, Universitas Muhammadiyah Malang, Malang, Indonesia

Publication Chairs

- Deris Stiawan, Universitas Sriwijaya, Palembang, Indonesia
- Imam MI Subroto, Universitas Islam Sultan Agung, Semarang, Indonesia
- Abdul Fadlil, Universitas Ahmad Dahlan, Yogyakarta, Indonesia
- Kartika Firdausy, Universitas Ahmad Dahlan, Yogyakarta, Indonesia
- Son Ali Akbar, Universitas Ahmad Dahlan, Yogyakarta, Indonesia
- Phisca Aditya Rosyady, Universitas Ahmad Dahlan, Yogyakarta, Indonesia

Publication Chairs

- Riky Dwi Puriyanto, Universitas Ahmad Dahlan, Yogyakarta, Indonesia
- Indra Riyanto, Universitas Budi Luhur, Jakarta, Indonesia
- Aina Musdholifah, Universitas Gadjah Mada, Yogyakarta, Indonesia
- Reza Firsandaya Malik, Universitas Sriwijaya, Palembang, Indonesia
- Muhammad Qomaruddin, Universitas Islam Sultan Agung, Semarang, Indonesia

TOC

2020 7th International Conference on Electrical Engineering, Computer Science and Informatics (EECSI)

Invited Paper

<i>IoT-Enabled Community Care for Ageing-in-Place: The Singapore Experience</i> Hwee Pink Tan (Singapore Management University & TCS-SMU iCity Lab, Singapore)	1
<i>Security and Privacy for the Internet of Things</i> Biplab Sikdar (National University of Singapore, Singapore)	3
<i>Memory Prediction on Real-Time User Behavior Traffic Detection</i> Rahmat Budiarto (Al Baha University, Saudi Arabia)	4

Parallel Room 1

<i>Experimental Investigation of Algorithms for Simultaneous Localization and Mapping</i> Tamara Zhukabayeva (Gumilyov Eurasian National University, Kazakhstan), Aiqul Adamova (Saken Seifullin University, Kazakhstan), Laula Zhumabayeva (Eurasian National University, Kazakhstan)	5
<i>Practical application of IOT and its implications on the existing software</i> Israa Saduq, MISS (UTeM & Universiti Teknikal Malaysia Melaka, Malaysia), Zahraa A. Jaaz (Al-Nahrain University, Baghdad, Iraq), Haider Hadi Abbas (Al-Mansour University College, Iraq), Haider Abdulshaheed (Baghdad College, Iraq)	10
<i>IoT Botnet Malware Classification Using Weka Tool and Scikit-learn Machine Learning</i> Susanto Susanto (Sriwijaya University & Universitas Bina Insan, Indonesia), Deris Stiawan (University of Sriwijaya, Indonesia), M. Aqus Syamsul Arifin (Universitas Sriwijaya & Universitas Bina Insan, Indonesia), Mohd. Yazid Idris (Universiti Teknologi Malaysia, Indonesia), Rahmat Budiarto (Al Baha University, Saudi Arabia)	15
<i>Aquatic Iguana: A Floating Waste Collecting Robot with IoT Based Water Monitoring System</i> Mirza Turesinin (North South University, Bangladesh), Abdullah Md Humayun Kabir (North South University, Bangladesh), Tanzina Mollah (North South University, Bangladesh), Sadvan Sarwar (North South University, Bangladesh), Shazzad Hosain (North South University, Bangladesh)	21
<i>Analysis of Autopsy Mobile Forensic Tools against Unsent Messages on WhatsApp Messaging Application</i> Fahdiaz Alief (University of Indonesia, Indonesia), Yohan Suryanto (University of Indonesia, Indonesia), Linda Rosselina (Universitas Indonesia, Indonesia), Tofan Hermawan (University of Indonesia, Indonesia)	26
<i>Performance Comparison of Schedulers in MmWave Communication using NS-3</i> Victor Lamboy Sinaqa (University of Indonesia, Indonesia), Rakhmat Yuniarto (University of Indonesia, Indonesia), Tofan Hermawan (University of Indonesia, Indonesia), Ruki Harwahyu (Universitas Indonesia, Indonesia), Riri Fitri Sari (Universitas Indonesia, Indonesia)	31
<i>Email classification via intention-based segmentation</i> Sanjay Kumar Sonbhadra (Indian Institute of Information Technology, Allahabad, India), Sonali Aqarwal (Indian Institute of Information Technology, Allahabad, India), Muhammad Syafrullah (Universitas Budi Luhur, Indonesia), Krisna Adiyarta (Universitas Budi Luhur, Indonesia)	38
<i>Prototype Design of Mobile Application 'Hydrolite' for Hydroponics Marketplace</i> Salsabila Ramadhina (UIN, Indonesia), Anqqa Aditya Permana (University of Muhammadiyah Tangerang, Indonesia), R Taufiq (Binus University & Universitas Muhammadiyah Tangerang, Indonesia)	45
<i>Automatic Grading System for Spreadsheet Formula</i> Kurniandha Sukma Yunastrian (Institut Teknologi Bandung, Indonesia), Saiful Akbar (Institut Teknologi Bandung, Indonesia), Fitra Arifiansyah (Institut Teknologi Bandung, Indonesia)	49
<i>Implementation of Secure Work From Home System Based on Blockchain using NS3 Simulation</i> Mega Apriani (Universitas Indonesia, Indonesia), Diwandaru Rousstia (Universitas Indonesia, Indonesia), Fajar Rifai (Universitas Indonesia, Indonesia), Ruki Harwahyu (Universitas Indonesia, Indonesia), Riri Fitri Sari (University of Indonesia, Indonesia)	54
<i>Designing Android-Based Fasting Reminder (Shiyam) Applications</i> Salsabila Ramadhina (UIN, Indonesia), Desi Nurnaningqih (University of Muhammadiyah Tangerang, Indonesia), Angga Aditya Permana (University of Muhammadiyah Tangerang, Indonesia), Ahmad Rodoni (UIN, Indonesia)	60

<i>Data Reduction Approach Based on Fog Computing in IoT Environment</i> Rawaa Majid Obaise (University of Babylon, Iraq)	65
<i>Software Defect Prediction Using Neural Network Based SMOTE</i> Rizal Broer Bahaweres (UIN Jakarta - IPB University & IEEE, IEEE Computer, ComSoc IEEE, Indonesia), Fajar Aqustian (UIN Syarif Hidayatullah Jakarta, Indonesia), Irman Hermadi (IPB University, Indonesia), Arif Imam Suroso (IPB University, Indonesia), Yandra Arkeman (Bogor Agricultural University, Indonesia)	71
<i>Aggressive driving behaviour classification using smartphone's accelerometer sensor</i> Sanjay Kumar Sonbhadra (Indian Institute of Information Technology, Allahabad, India), Sonali Aqarwal (Indian Institute of Information Technology, Allahabad, India), Muhammad Syafrullah (Universitas Budi Luhur, Indonesia), Krisna Adiyarta (Universitas Budi Luhur, Indonesia)	77

Parallel Room 2

<i>Design of Regenerative Damper for Energy Harvester in Playground Seesaw</i> Reyhan Ramadhan (Institut Teknologi Bandung, Indonesia), Muhammad UI Haq (Institut Teknologi Bandung, Indonesia), Estiyanti Ekawati (Institut Teknologi Bandung, Indonesia), Tri Prakosa (Bandung Institute of Technology, Indonesia)	83
<i>SCADA Solution by Installing DTM6000 and Trunking Tier Three</i> Marsul Siregar, Jr (Atma Jaya Catholic University of Indonesia Jakarta & PT WTE, Indonesia), Ikar Mustikaswara (PT Aplikasinusa Lintasarta, Indonesia), Dhian Wahyudi (PT. Radio Komunikasi Indonesia, Indonesia), Tajuddin Nur (Atma Jaya Catholic University, Indonesia)	89
<i>Optimal Sizing of Micro Hydropower to Improve Hybrid Renewable Power System</i> Syafii Syafii (Universitas Andalas, Indonesia), Heru Dibyo Laksono (Universitas Andalas, Indonesia), Novizon Novizon (Universitas Andalas, Indonesia), Rahmad Fahreza (Universitas Andalas, Indonesia)	95
<i>Potential for Reducing CO2 Emissions in the Operation of Subcritical Power Plants into Supercritical</i> Sunaryo Sunaryo (Unissula Semarang, Indonesia), Arinan Putra (Unissula Semarang, Indonesia), Arief Marwanto (Universiti Islam Sultan Agung (UNISSULA) Semarang, Indonesia), Muhamad Haddin (Universitas Islam Sultan Agung, Indonesia)	100
<i>Steering System of Electric Vehicle using Extreme Learning Machine</i> Sofyan Ahmadi, SA (Universitas Jember, Indonesia), Khairul Anam (University of Jember, Indonesia), Azmi Saleh (Jember University, Indonesia)	105
<i>Analysis on the Cogging Torque of Permanent Magnet Machine for Wind Power Applications</i> Tajuddin Nur (Atma Jaya Catholic University of Indonesia, Indonesia, Indonesia), Linda Wijayanti (Atma Jaya Catholic University of Indonesia, Indonesia), Anthon de Fretes (Atma Jaya Catholic University of Indonesia, Indonesia), Karel Octavianus Bachri (Atma Jaya Catholic University of Indonesia, Indonesia, Indonesia)	109
<i>Features Extraction on IoT Intrusion Detection System Using Principal Components Analysis (PCA)</i> Sharipuddin Sharipuddin (STIKOM Dinamika Bangsa, Indonesia), Benni Purnama (STIKOM Dinamika Bangsa Jambi, Indonesia), Kurniabudi Kurniabudi (STIKOM Dinamika Bangsa, Indonesia), Eko Arip Winanto (Universiti Teknologi Malaysia, Malaysia), Deris Stiawan (University of Sriwijaya, Indonesia), Darmawijoyo Hanapi (Sriwijaya University, Indonesia), Mohd. Yazid Idris (Universiti Teknologi Malaysia, Malaysia), Rahmat Budiarto (Al Baha University, Saudi Arabia)	114
<i>Improving the Anomaly Detection by Combining PSO Search Methods and J48 Algorithm</i> Kurniabudi Kurniabudi (STIKOM Dinamika Bangsa, Indonesia), Abdul Harris (STIKOM Dinamika Bangsa, Indonesia), Albertus Edward Mintaria (STIKOM Dinamika Bangsa, Indonesia), Darmawijoyo Hanapi (Sriwijaya University, Indonesia), Deris Stiawan (University of Sriwijaya, Indonesia), Mohd. Yazid Idris (Universiti Teknologi Malaysia, Malaysia), Rahmat Budiarto (Al Baha University, Saudi Arabia)	119

Parallel Room 3

<i>Characterization of Polydimethylsiloxane Dielectric Films for Capacitive ECG Bioelectrodes</i> Alhassan Haruna Umar (Jiqawa State Polytechnic Dutse Nigeria & Universiti Teknologi Malaysia Johor Bahru, Malaysia), Fauzan Khairi Che Harun (Universiti Teknologi Malaysia, Malaysia), Yusmeeraz Yusof (Universiti Teknologi Malaysia, Malaysia)	127
<i>Dynamic Hand Gesture Recognition Using Temporal-Stream Convolutional Neural Networks</i> Fladio Armandika (Universitas Jenderal Achmad Yani, Indonesia), Esmeralda Contessa Djamal (Universitas Jenderal Achmad Yani, Indonesia), Fikri Nugraha (Universitas Jenderal Achmad Yani, Indonesia), Fatan Kasyidi (Universitas Jenderal Achmad Yani, Indonesia)	132

Digital Repository Universitas Jember

<i>Person tracking with non-overlapping multiple cameras</i> Sanjay Kumar Sonbhadra (Indian Institute of Information Technology, Allahabad, India), Sonali Aqarwal (Indian Institute of Information Technology, Allahabad, India), Muhammad Syafrullah (Universitas Budi Luhur, Indonesia), Krisna Adiyarta (Universitas Budi Luhur, Indonesia)	137
<i>Steady-state response feature extraction optimization to enhance electronic nose performance</i> Dyah Kurniawati Agustika (The University of Warwick, United Kingdom (Great Britain) & Universitas Negeri Yoqyakarta, Indonesia), Shidiq Hidayat (Universitas Gadjah Mada, Indonesia), Kuwat Triyana (Universitas Gadjah Mada, Indonesia), Doina D Iliescu (University of Warwick, United Kingdom (Great Britain)), Mark S Leeson (University of Warwick, United Kingdom (Great Britain))	144
<i>Semantic Classification of Scientific Sentence Pair Using Recurrent Neural Network</i> Aqunq Besti (Universitas Jenderal Achmad Yani, Indonesia), Ridwan Ilyas (Universitas Jenderal Achmad Yani, Indonesia), Fatan Kasyidi (Universitas Jenderal Achmad Yani, Indonesia), Esmeralda Contessa Djamal (Universitas Jenderal Achmad Yani, Indonesia)	150
<i>Classification of Post-Stroke EEG Signal Using Genetic Algorithm and Recurrent Neural Networks</i> Ella Wahyu Guntari (Universitas Jenderal Achmad Yani, Indonesia), Esmeralda Contessa Djamal (Universitas Jenderal Achmad Yani, Indonesia), Fikri Nuqraha (Universitas Jenderal Achmad Yani, Indonesia), Sandi Lesmana Liem (Universitas Jenderal Achmad Yani, Indonesia)	156
<i>IoT in Patient Respiratory Condition & Oxygen Regulator's Flowrate Monitor</i> Ayu Jati Puspitasari (Polytechnic Institute of Nuclear Technology, National Nuclear Energy Agency of Indonesia, Indonesia), Arya Nicosia (Polytechnic Institute of Nuclear Technology, National Nuclear Energy Agency of Indonesia, Indonesia), Dian Bayu Prakarsa (Polytechnic Institute of Nuclear Technology, National Nuclear Energy Agency of Indonesia, Indonesia), Djiwo Harsono (Polytechnic Institute of Nuclear Technology, National Nuclear Energy Agency of Indonesia, Indonesia)	162
<i>A Wireless ECG Device with Mobile Applications for Android</i> Mohamad Hafis Nornaim (Universiti Teknologi Malaysia, Malaysia), Nurul Ashikin Abdul-Kadir (Universiti Teknologi Malaysia, Malaysia), Fauzan Khairi Che Harun (Universiti Teknologi Malaysia, Malaysia), Mohd Azhar Abdul Razak (Universiti Teknologi Malaysia, Malaysia)	168
<i>Hand Movement Identification Using Single-Stream Spatial Convolutional Neural Networks</i> Aldi Sidik Permana (Universitas Jenderal Achmad Yani, Indonesia), Esmeralda Contessa Djamal (Universitas Jenderal Achmad Yani, Indonesia), Fikri Nuqraha (Universitas Jenderal Achmad Yani, Indonesia), Fatan Kasyidi (Universitas Jenderal Achmad Yani, Indonesia)	172
<i>The Improvement Impact Performance of Face Detection Using YOLO Algorithm</i> Rakha Asyrofi (Institut Teknologi Sepuluh Nopember, Indonesia), Yoni Azhar Winata (Institut Teknologi Sepuluh Nopember, Indonesia)	177
<i>Design of Integrated Bioimpedance Analysis and Body Mass Index for Users with Special Needs</i> Ganjar Winasis (Diponegoro University, Indonesia), Munawar Riyadi (Diponegoro University, Indonesia), Teguh Prakoso (Diponegoro University, Indonesia)	181
<i>Investigation of Structural Parameter Variation on Extended Gate TFET for Bio-Sensor Applications</i> Sudipta Mukherjee (Indian Institute of Technology, Bombay, India), Somnath Chakraborty (Indian Institute of Technology Bombay, India), Deven Diwakar (Indian Institute of Technology Bombay, India), Apurba Laha (Indian Institute of Technology Bombay, India), Udayan Ganguly (Indian Institute of Technology Bombay, India), Swaroop Ganguly (IIT Bombay, India)	187
<i>Spoken Word and Speaker Recognition Using MFCC and Multiple Recurrent Neural Networks</i> Yoqa Utomo (Universitas Jenderal Achmad Yani, Indonesia), Esmeralda Contessa Djamal (Universitas Jenderal Achmad Yani, Indonesia), Fikri Nuqraha (Universitas Jenderal Achmad Yani, Indonesia), Faiza Renaldi (Universitas Jenderal Achmad Yani, Indonesia)	192
<i>Smart Navigation Equipment Monitoring System</i> Muhammad Arif Sulaiman (Bandung Institute of Technology, Indonesia), Trio Adiono (STEI ITB, Indonesia)	198
<i>Ball and Beam Control using Adaptive PID based on Q-Learning</i> Brilian Putra Amiruddin (Institut Teknologi Sepuluh Nopember, Indonesia), Rusdhianto Effendi Abdul Kadir (Institut Teknologi Sepuluh Nopember, Indonesia)	203

Parallel Room 4

<i>Framework Design for the Retrieval of Instant Messaging in Social Media as Electronic Evidence</i> Linda Rosselina (Universitas Indonesia, Indonesia), Yohan Suryanto (University of Indonesia, Indonesia), Tofan Hermawan (University of Indonesia, Indonesia), Fahdiaz Alief (University of Indonesia, Indonesia)	209
---	-----

Digital Repository Universitas Jember

<i>An Overview of Knowledge Mapping in Digital Business Industry: A Systematic Literature Review</i>	
Dana I. Sensuse (Universitas Indonesia, Indonesia), Alifiannisa Lawami Diar (University of Indonesia, Indonesia), Sofian Lusa (University of Indonesia, Indonesia), Damayanti Elisabeth (Universitas Indonesia, Indonesia)	216
<i>Human Related Challenges in Agile Software Development of Government Outsourcing Project</i>	
Amaliah Khoirun Nisyak (Universitas Indonesia, Indonesia), Khairiyah Rizkiyah (University of Indonesia, Indonesia), Teguh Raharjo (Universitas Indonesia, Indonesia)	222
<i>Deep Convolutional Architecture for Block-Based Classification of Small Pulmonary Nodules</i>	
Ahmed Samy Ismaeil (German University in Cairo, Egypt), Mohammed A.-Megeed Salem (German University in Cairo & Ain Shams University, Egypt)	230
<i>Comparison of Maintainability Index Measurement from Microsoft Code Lens and Line of Code</i>	
Gilang Heru Kencana (Politeknik Elektronika Negeri Surabaya, Indonesia), Akuwan Saleh (Electronic Engineering Polytechnic Institute of Surabaya, in Indonesia, Indonesia), Haryadi Amran Darwito (Politeknik Elektronika Negeri Surabaya, Indonesia), Rizki Rachmadi (Electronic Engineering Polytechnic Institute of Surabaya, Indonesia), Elsa Mayang Sari (Politeknik Elektronika Negeri Surabaya, Indonesia)	235
<i>Method Using IOT Low Earth Orbit Satellite to Monitor Forest Temperature in Indonesia</i>	
Ariesta Satryoko (SKSG, Universitas Indonesia, Indonesia), Arthur Josias Simon (SKSG, Universitas Indonesia, Indonesia)	240
<i>KM Maturity for A Gas Company in Indonesia: G-KMMM Assessment and Improvement Recommendation</i>	
Handoko Ramadhan (University of Indonesia, Indonesia), Majesty Permana (University of Indonesia, Indonesia), Dana I. Sensuse (Universitas Indonesia, Indonesia), Sofian Lusa (University of Indonesia, Indonesia), Damayanti Elisabeth (Universitas Indonesia, Indonesia)	244
<i>Exploring Success Factor for Mobile based Smart Regency Service using TRUTAUT Model Approach</i>	
Aang Kisnu Darmawan, Dr (Madura Islamic University & Faculty of Engineering, Indonesia), Daniel Siahaan (Institut teknologi Sepuluh Nopember, Indonesia), Tony Dwi Susanto (ITS, Indonesia), Hoiriyah Hoiriyah (Madura Islamic University, Indonesia), Busro Umam (Madura Islamic University, Indonesia), Anwari Anwari (Madura Islamic University, Indonesia)	250
<i>Intelligent Wheelchair Control System based on Finger Pose Recognition</i>	
Iswahyudi Yudi (University of Jember, Indonesia), Khairul Anam (University of Jember, Indonesia), Azmi Saleh (Jember University, Indonesia)	257
<i>Collaborative Learning in Virtual Learning Environment using Social Network Analysis</i>	
Fitria Amastini (Universitas Indonesia & Universitas Terbuka, Indonesia), Cristin Kaunanq (Universitas Indonesia, Indonesia), Afifah Nefiratika (Universitas Indonesia, Indonesia), Dana Indra Sensuse (University of Indonesia, Indonesia), Sofian Lusa (University of Indonesia, Indonesia)	262
<i>A Machine Learning Model on Virtual University of Senegal's Educational Data Based on Lambda Architecture</i>	
Serigne Mbacke Gueye (Université Alioune Diop de Bambey & TIC4Dev, Senegal), Alassane Diop (University Alioune Diop of Bambey, Senegal), Amadou Dahirou Gueye (University Alioune Diop of Bambey, Senegal)	270
<i>Designing Feature Application for User Experience to Censor Inappropriate Scene in Indonesia</i>	
Ariesta Satryoko (SKSG, Universitas Indonesia, Indonesia), Arthur Josias Simon (SKSG, Universitas Indonesia, Indonesia)	276
<i>Quality in Use of Digital Wallet based on ISO/IEC 25022</i>	
Windy Rahmadia Pradanita (Institut Teknologi Sepuluh Nopember, Indonesia), Siti Rochimah (Institut Teknologi Sepuluh Nopember, Indonesia)	282



IEEE Xplore

Browse My Settings Help

Institutional Sign In

Institutional Sign In

All



ADVANCED SEARCH

Conferences > 2020 7th International Confer...

Intelligent Wheelchair Control System Based on Finger Pose Recognition

Publisher: IEEE

Cite This

Cite This

PDF

Iswahyudi ; Khairul Anam ; Azmi Saleh All Authors

8 Full Text Views

Export to Collabratec

Alerts

- Manage Content Alerts
- Add to Citation Alerts

More Like This

- An improved head pose estimation method for the robotic wheelchair interaction control
2017 IEEE International Conference on Robotics and Biomimetics (ROBIO)
Published: 2017
- Multimodal control of a robotic wheelchair: Using contextual information for usability improvement
2013 IEEE/RSJ International Conference on Intelligent Robots and Systems
Published: 2013

Show More

Abstract

Document Sections

- I. Introduction
- II. The Proposed Method
- III. Results and Discussion
- IV. Conclusion

Download PDF

Abstract:In the old day, wheelchairs are moved manually by using hand or with the assistance of someone else. Users of this wheelchair get tired quickly if they have to walk long ... [View more](#)

Metadata

Abstract:

In the old day, wheelchairs are moved manually by using hand or with the assistance of someone else. Users of this wheelchair get tired quickly if they have to walk long distances. The electric wheelchair emerged as a form of innovation and development for the manual wheelchair. This paper presented the control system of the electric wheelchair based on finger poses using the Convolutional Neural Network (CNN). The camera is used to take pictures of five-finger poses. Images are selected only in certain sections using Region of Interest (ROI). The five-finger poses represent the movement of the electric wheelchair to stop, right, left, forward, and backward. The experimental results indicated that the accuracy of the finger pose detection is about 93.6%. Therefore, the control system using CNN can be a potential solution for an electric wheelchair.

Authors

Figures

References

Keywords

Metrics

More Like This
IEEE websites place cookies on your device to give you the best user experience. By using our websites, you agree to the placement of these cookies. To learn more, read our Privacy Policy.

Accept & Close

ISBN Information:

Publisher: IEEE

Conference Location: Yogyakarta, Indonesia

Contents

I. Introduction

Persons with disabilities are people who experience physical, intellectual, mental, and or sensory limitations for an extended time. When they interact with the environment, they meet some obstacles and difficulties [1]. Data from the Inter-Census Population Survey or SUPAS (2015) [2] shows that as many as 21.84 million or about 8.56 percent of Indonesia's population, are those with disabilities. We can know that people with foot disabilities, whether caused by accidents or due to congenital disabilities, have difficulty walking. To walk around, they need a wheelchair. A wheelchair is generally moved manually by using hand strength or with the assistance of another person. One of the problems when using a wheelchair is that the user will get tired quickly especially for long distance travelling. To solve this problem, the manual wheelchair was transformed into electric wheelchairs by adding an electric motor to drive the wheelchair. The development of wheelchairs continues not only in terms of the propulsion system, but the navigation control system for wheelchair movements has also been developed. Currently, electric wheelchairs have also experienced developments in the navigation or movement control system. Research on the movement control system for electric wheelchairs has also been developed to provide convenience for the wearer. There are many ways to control the movement of a wheelchair, such as using a joystick, voice signal, and a camera. In this study, we equip the electric wheelchair with a camera using the Convolutional Neural Network (CNN) algorithm in recognizing the pose finger. Image data in the form of five types of finger poses representing the classified control of movement of an electric wheelchair to stop, right, left, forward and backward.

Authors

Figures

References

Keywords

Metrics

IEEE Personal Account

Purchase Details

Profile Information

Need Help?

Follow

CHANGE USERNAME/PASSWORD

PAYMENT OPTIONS

COMMUNICATIONS PREFERENCES

US & CANADA: +1 800 678 4333



IEEE websites place cookies on your device to give you the best user experience. By using our websites, you agree to the placement of these cookies. To learn more, read our Privacy Policy.

TECHNICAL INTERESTS

CONTACT & SUPPORT

Accept & Close

IEEE Account

- » [Change Username/Password](#)
- » [Update Address](#)

Purchase Details

- » [Payment Options](#)
- » [Order History](#)
- » [View Purchased Documents](#)

Profile Information

- » [Communications Preferences](#)
- » [Profession and Education](#)
- » [Technical Interests](#)

Need Help?

- » **US & Canada:** +1 800 678 4333
- » **Worldwide:** +1 732 981 0060
- » [Contact & Support](#)



Proc. EECSEI 2020, 11-12 October 2020
Digital Repository Universitas Jember

Intelligent Wheelchair Control System Based on Finger Pose Recognition

Iswahyudi
Dept. of Electrical Engineering
University of Jember
Jember, Indonesia
email: yudiokyas@gmail.com

Khairul Anam
Dept. of Electrical Engineering
University of Jember
Jember, Indonesia
email: Khairul@unej.ac.id

Azmi Saleh
Dept. of Electrical Engineering
University of Jember
Jember, Indonesia
email: azmi2009@gmail.com

Abstract— In the old day, wheelchairs are moved manually by using hand or with the assistance of someone else. Users of this wheelchair get tired quickly if they have to walk long distances. The electric wheelchair emerged as a form of innovation and development for the manual wheelchair. This paper presented the control system of the electric wheelchair based on finger poses using the Convolutional Neural Network (CNN). The camera is used to take pictures of five-finger poses. Images are selected only in certain sections using Region of Interest (ROI). The five-finger poses represent the movement of the electric wheelchair to stop, right, left, forward, and backward. The experimental results indicated that the accuracy of the finger pose detection is about 93.6%. Therefore, the control system using CNN can be a potential solution for an electric wheelchair.

Keywords— Object Recognition, Region of Interest (ROI), Convolutional Neural Network (CNN)

I. INTRODUCTION

Persons with disabilities are people who experience physical, intellectual, mental, and or sensory limitations for an extended time. When they interact with the environment, they meet some obstacles and difficulties [1]. Data from the Inter-Census Population Survey or SUPAS (2015) [2] shows that as many as 21.84 million or about 8.56 percent of Indonesia's population, are those with disabilities. We can know that people with foot disabilities, whether caused by accidents or due to congenital disabilities, have difficulty walking. To walk around, they need a wheelchair. A wheelchair is generally moved manually by using hand strength or with the assistance of another person. One of the problems when using a wheelchair is that the user will get tired quickly especially for long distance travelling. To solve this problem, the manual wheelchair was transformed into electric wheelchairs by adding an electric motor to drive the wheelchair. The development of wheelchairs continues not only in terms of the propulsion system, but the navigation control system for wheelchair movements has also been developed. Currently, electric wheelchairs have also experienced developments in the navigation or movement control system. Research on the movement control system for electric wheelchairs has also been developed to provide convenience for the wearer. There are many ways to control the movement of a wheelchair, such as using a joystick, voice signal, and a camera. In this study, we equip the electric wheelchair with a camera using the Convolutional Neural Network (CNN) algorithm in recognizing the pose finger. Image data in the form of five types of finger poses representing the classified control of movement of an electric wheelchair to stop, right, left, forward and backward.

Several previous studies has published research on hand gesture detection such as [3]. In this study, the classification process for finger pose recognition was carried out using

Zernike Moment (ZMs) for feature extraction and three classifications, i.e. k-Nearest Neighbour (KNN), Artificial Neural Network (ANN), and Support Vector Machine (SVM) with accuracy of 77,5%, 82,5%, and 91%, respectively. Another research [4] focused on finger pose recognition to control robot movements. They extracted fature using ZMs and classified those features using ANN. The results of this study are expected that the proposed system provides an alternative way to control the robot. Another research employed Deep learning for hand gesture recognition[5], using Convolutional Neural Networks (CNNs) and Stacked Denoising Autoencoders (SDAEs) with the accuracy of 91.33 and 92.83 %, respectively. Furhermore [6] focused on wheelchair movement control based on the identification of the pupil movement of the eyeball. Extraction feature using Face and Eye Detection and Canny Edge Detection whereas classification techniques using Eye Pupil Center Classification with the control system Raspberry Pi. The results of the wheelchair movement control study experienced some time delay, dark light places affected wheelchair performance and it was difficult to track pupils in dark light.

Based on some previous research, researcher chose CNN[7][8][9][10]. The reason for choosing CNN is because it is effective in solving many problems related to object recognition. The purpose of this paper to employ CNN to identify the pose finger as the control source of electrical wheelchair.

II. THE PROPOSED METHOD

A. Object Recognition

Object recognition is a technique contained in computer vision to identify objects in an image or video. The purpose of object recognition is to teach computers how humans can recognize an object in an image or video.

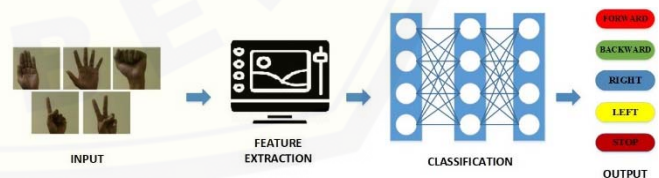


Fig. 1. Illustration of Hand Pose Recognition

Fig. 1 explains the image recognition techniques that can identify and classify five types of finger poses that represent the movement of an electric wheelchair. In this study, researchers proposed image recognition techniques using the method deep learning with algorithm convolutional neural network (CNN).

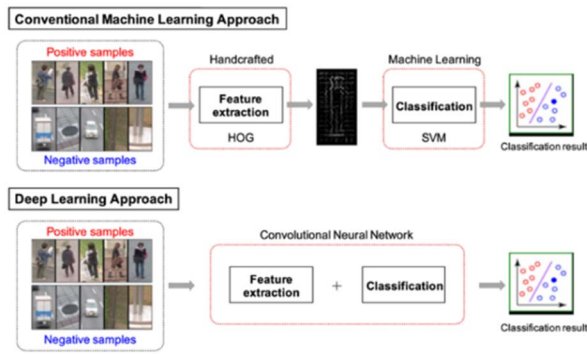


Fig. 2. ML and DL Image Recognition[11]

Fig. 2 is a picture of the steps that are generally taken in designing an object recognition system or object recognition in machine learning (ML) and deep learning (DL) algorithms. The fundamental difference between ML and DL is in DL the feature extraction and classification process become an inseparable part, but in ML the feature extraction and classification processes are carried out separately.

B. Region of Interest (ROI)

In digital image processing, sometimes we only need an image processor only in certain parts or areas. The desired area is called the Region of Interest (ROI)[12]. The purpose of using ROI in this study is to optimize the performance of the system in detecting finger poses in real time. Without ROI, image processing is performed on all image pixels without exception



Fig. 3. The Results of Cropping And Finger Detection in ROI

Figure 3 is the result of the cropping process to get the image area that is needed using the cropping technique. Certain areas of the image are delimited by a box with a width of 230 pixels and a height of 300 pixels. The bounding box in the frame has top, right, bottom, left = 100, 370, 400, 600.

C. Convolutional Neural Network (CNN)

Convolutional Neural Network (CNN) is a development of a Multilayer Perceptron (MLP) which is designed to process two-dimensional data in the form of images

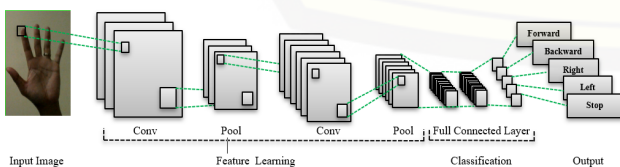


Fig. 4. Architecture of Convolutional Neural Network

CNN's ability is claimed to be the best model for solving problems object recognition and object detection. CNN consists of 2 main parts, namely the feature learning and classification features. Feature learning consisting of

Convolutional layer, Pooling, and ReLU. Classification feature contains Fully Connected Layer (FCL).

D. Convolutional Layer

The convolution process makes use of what is known as a filter. Like images, filters have a certain height, width, and thickness. Filters are defined by specific or random values. The convolutional layer is the most important component of CNN. Convolution is a mathematical term where application of a function to the output of another function repeatedly. The mathematical operation of the convolution can be written as follows:

$$s(t) = (x * t)(t) = \sum_{t=-1}^{\infty} x(\alpha) * w(t - \alpha) \tag{1}$$

From equation (1) it can be explained the function s(t) provides a single output in the form of a feature map. The first argument is input which is x and the second argument is w as the kernel or filter. When viewed as a two-dimensional image input, it can be said that t is a pixel.

To calculate the number of activated neurons in an output using a hyperparameter using the formula:

$$(W - F + 2P)/(S + 1) \tag{2}$$

From equation (2) it can be explain, it can be calculated the spatial size of the output volume where the hyperparameters used are the volume size (W), filter (F), applied Stride (S) and the amount of zero padding used (P). Stride is the value used to shift the filter through the image input and Zero Padding is the value to get zeros around the image border.

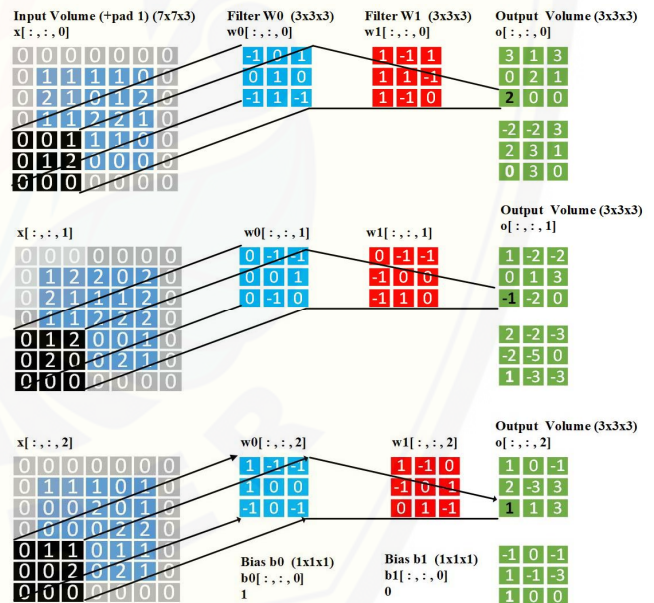


Fig. 5. Illustration Convolution Process with 2 Filter

In Fig. 5 can be explained at each image position a number is generated which is dot product between parts of the image with filter used. Process shifting (convolve) filter in every possible position filter on the resulting image a activation map.

E. Activation Function

The activation function is at the stage after carrying out convolution and before carrying out the pooling layer. In the results of the convolution, an activation function is carried out.

The function of activation to determine whether neuron must be active or not based weighted sum from the input. In general there are 2 types of activation functions, namely Linier and Non Linier Activation Function. The activation function commonly used on CNN is the activation function ReLU (Rectified Linier Unit) and tanh().

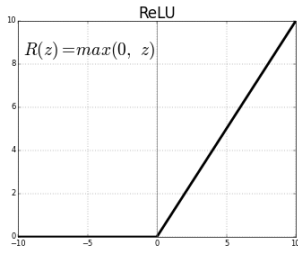


Fig. 6. Activation function of ReLU

F. Pooling Layer

Pooling is a reduction in the size of the matrix, usually after the convolution process, consisting of a filter of a certain size and stride which will alternately shift the entire feature map area.

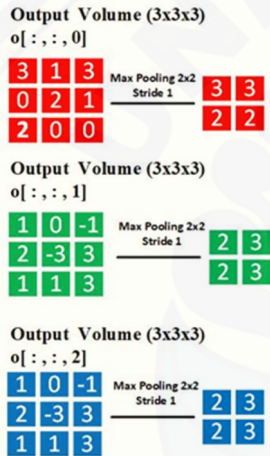


Fig. 7. Example of max pooling

Based on the picture above shows the process of max-pooling. The output of the pooling process is a matrix with smaller dimensions compared to the initial image. The pooling layer above will operate at each slice of the input volume depth in turn. When viewed from the image above, the max-pooling operation uses a 2x2 filter size. The input to the process is 3x3 in size, from each of the 3 numbers in the operation input the maximum value is taken then proceed to make a new output size to be 2x2

G. Fully Connected Layer

Fully connected layer (FCL) is a layer where all the activation neurons from the previous layer are connected all the neuron on the next layer as is done in an ordinary artificial neural network. Any output from the previous convolutional layer is converted first into one-dimensional data before it can be linked to all neuron in the layer Fully Connected. The purpose of the FCL is to process data so that it can be classified. In the FCL layer all neuron are connected as a whole

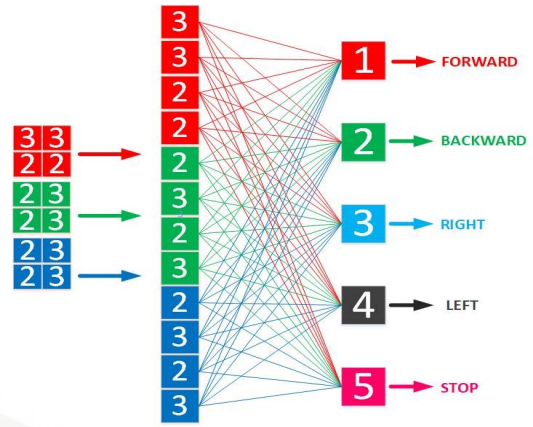


Fig. 8. Fully connected layer

H. Creating Model Dataset

The first thing to prepare is that we have to create and collect data samples. In this study the authors used five types of finger poses to identify and classify. Finger pose data samples were taken from selected subjects. The finger pose data will be divided into two, namely 80% as training data and 20% as test data. Data samples were taken using a webcam camera. 500 pictures were taken of each finger pose. The number of collected image datasets is 2500. Image resolution value is 230x300 with plain white background and varied backgrounds.

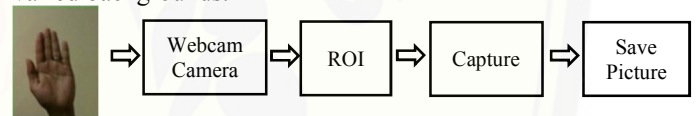
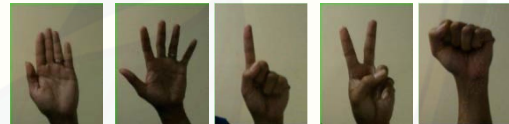
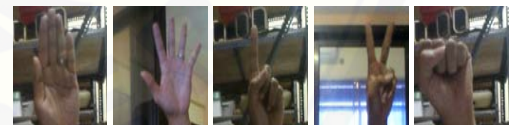


Fig. 9. Flow of the data sampling process



(a) (b) (c) (d) (e)

Fig. 10. Five finger pose white background
(a)Forward (b) Backward (c) Right (d) Left (e) Stop



(a) (b) (c) (d) (e)

Fig. 11. Five finger pose varied backgrounds
(a)Forward (b) Backward (c) Right (d) Left (e) Stop

I. Creating Model Dataset

The The data analysis method used in this research is Convolutional Neural Network (CNN) which aims to classify the five finger poses.

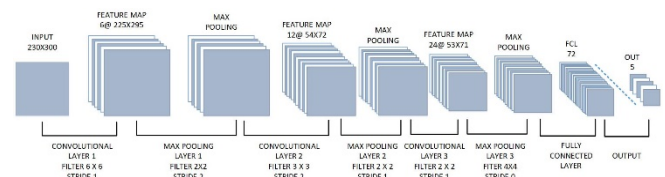


Fig. 12. Eight layers of convolutional neural network

As shown in figure 12 there are three layers convolutional in the CNN model with 8 layers. Researchers can explain as follows:

- The first convolution An image input with a resolution of 230x300x3 is entered at the first convolution with the filter size 6x6 and depth 6 and stride 2 produce output feature map amounting to 225x295x3. Feature map The first convolution is then maxpooling with a 2x2 stride 2 filter resulting in a feature map of 112x147x3 input.
- The second convolution, the result of the first convolution 112x147x3 is entered into the second convolution with a filter size of 3x3 and depth 12 and stride 2 produce output feature map amounting to 12@55x73x3. Feature map the result of the second convolution is then at maxpooling with filter 2x2 stride 1 produce a feature map of 12 @ 54x72x3.
- The third convolution, the result of the second convolution 54x72x3, is inserted into the second convolution with a filter size of 3x3 and a depth of 24 with stride 2 resulting in a feature map output of 24 @ 53x71x3. The second convoluted feature map is then maxpooling with a 4x4 stride 1 filter to produce a feature map of 24 @ 50x68x3.
- At the final stage, namely proses fully connected layer, which is to combine all the results of the convolution into one line, then a probability process is carried out for each row to be carried out the classification process into 5 classification outputs, namely forward, backward, right, left, and stop. Process learning using 100 epoch

TABLE I. NETWORKS PARAMETERS OF CNN

Layer	Jumlah node
Input Layer	230 x 300
Convolutional Layer 1	Filter: 6x6 Depth: 6 Stride: 2
Max Pooling Layer 1	Filter: 2x2 Stride 2
Convolutional layer 2	Filter: 3x3 Depth:12 Stride: 2
Max Pooling Layer 2	Filter: 2x2 Stride 1
Convolutional layer 3	Filter: 3x3 Depth:24 Stride: 1
Max Pooling Layer 3	Filter: 4x4 Stride 1
Full Connected Layer	72
Output layer	5

III. RESULTS AND DISCUSSION

A. Training Data

After a dataset of five types of finger poses is created, the dataset will be trained to train the data based on the CNN model algorithm that has been created. The number of training datasets is 2500 image data from five types of finger poses. The training process is carried out by entering the dataset into the model for each model created using the python program on Jupiter notebooks. The number of epochs used in this training process is 100.



Fig. 13. Training and validation of accuracy

Figure 13 shows the results of training data with the CNN model. From these results it can be explained that at epoch 1 to 10 the accuracy value is between 28.31% to 83.09%. Whereas for epoch 11 to 100 the accuracy value shows an increase between 84.92% to 98.75%. From these results it can be seen that the average level of accuracy at the time of training data by adding an accuracy of 100 epochs, then divided by the number of epochs used, in order to obtain an average accuracy rate of 93.75%.

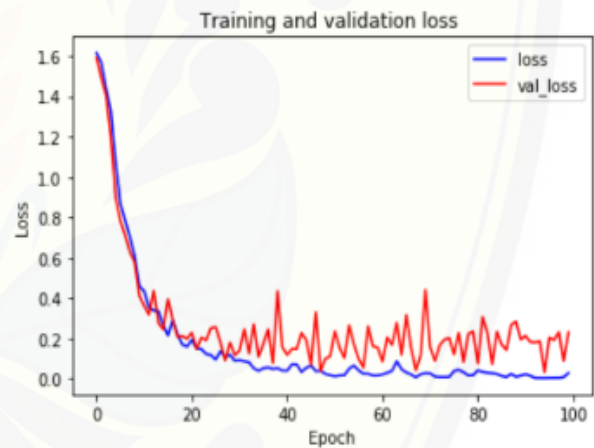


Fig. 14. Training dan validation Loss

In Figure 14, it can be seen that the resulting loss value at epoch 1 to 4 ranges from 16%-10%. Meanwhile, from epoch 5 to 100 the value of the loss is getting lower, namely between 0.8% to 0.03%. These results indicate that the smaller the resulting loss, the greater the value of the level of accuracy. This loss value is influenced by the amount of data used in the training process.

B. Testing Data

The next stage after carrying out the learning process is to carry out the testing process of the training model that has been created by testing the video in real time and randomly with a resolution of 240 x 215. The test was carried out by saving the captured video in the form of a frame at a rate of 5 frames per second (fps) for five seconds. Each finger pose produces 25 image frame, so that a total of 125 image frames were tested.

TABLE II. REAL TIME DATA TESTING RESULT

Types of Pose Finger	Total	Prediction		Accuracy (%)
		True	False	
Forward	25	25	0	100
Back off	25	25	0	100
Right	25	22	3	88
Left	25	22	3	88
Stop	25	23	2	92

Table 2 is the result of the data testing process. Data testing is carried out based on a previously created dataset. The total in testing is 125 for each different type of finger pose. From the results, it is known that the correct detected forward finger pose is 25, 25 backward finger pose, 22 right hand finger pose, 22 left hand finger pose, and finger pose. correctly detected stop hand is 23. Based on these results it is known that the average accuracy rate in online testing is 93.6%.

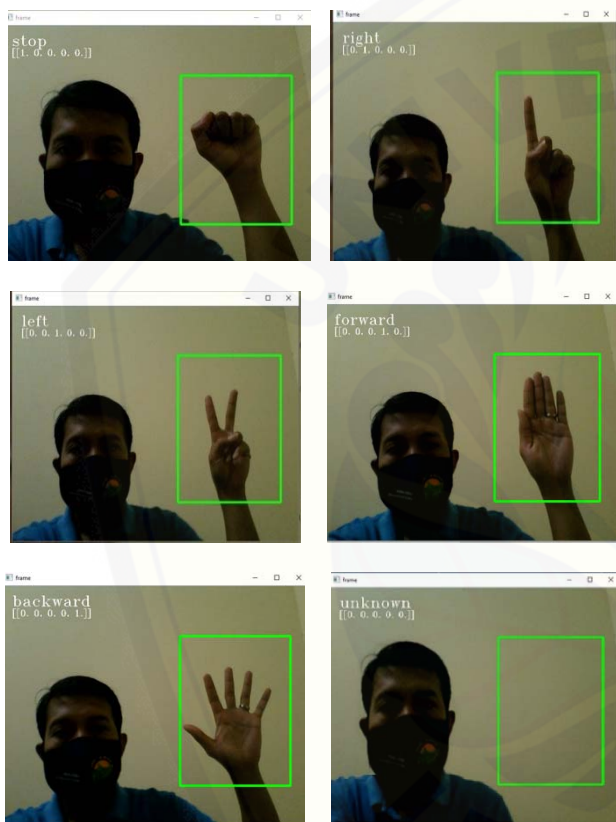


Fig. 15. The results of testing the predictions of 5 finger poses in real time

IV. CONCLUSION

This paper present a wheelchair control system based on pose finger recognition using CNN. There were five pose finger tested. The detection results was utilized to control the direction of the electrical wheelchair. The experimental results shows that the system achieved the average accuracy of 93.6%. These results are promising but it should be improved for real-time application.

ACKNOWLEDGMENT

I would like to thank the lecturers and friends, especially the electrical engineering master program at Jember University who participated in writing this article so that it was completed on time.

REFERENCES

- [1] A. Cristea, "Undang Undang RI NOMOR 8 TAHUN 2016," *PENYANDANG Disabil.*, p. 102, 2016.
- [2] "Penduduk Indonesia hasil SUPAS 2015." 2015.
- [3] A. H. Kulkarni and S. A. Urabinahatti, "Performance comparison of three different classifiers for hci using hand gestures," *Int. J. Mod. Eng. Res.*, vol. 2, no. 4, pp. 2857–2861, 2012.
- [4] T. Nadu, "Robot Navigation Control Using Hand Gestures," *Int. J. Mod. Trends Eng. Res. Predict. Thyroid Dis. USING DATAMINING*, pp. 320–327, 2015.
- [5] O. K. Oyedotun and A. Khashman, "Deep learning in vision-based static hand gesture recognition," *Neural Comput. Appl.*, vol. 28, no. 12, pp. 3941–3951, 2017.
- [6] D. Sahu, "Camera Based Eye Controlled Electronic Wheelchair System Using Raspberry Pi," vol. 0869, no. 3, pp. 83–87, 2016.
- [7] Matthew D. Zeiler and Rob Fergus, "Visualizing and understanding convolutional networks," *Eur. Conf. Comput. Vis.*, vol. 12, pp. 818–833, 2014.
- [8] B. Hu and J. Wang, "Deep Learning Based Hand Gesture Recognition and UAV Flight Controls," *Int. J. Autom. Comput.*, vol. 17, no. 1, pp. 17–29, 2020.
- [9] P. S. Neethu, R. Suguna, and D. Sathish, "An efficient method for human hand gesture detection and recognition using deep learning convolutional neural networks," *Soft Comput.*, vol. 5, 2020.
- [10] W. Cheng, Y. Sun, G. Li, G. Jiang, and H. Liu, "Jointly network: a network based on CNN and RBM for gesture recognition," *Neural Comput. Appl.*, vol. 31, pp. 309–323, 2019.
- [11] H. Fujiyoshi, T. Hirakawa, and T. Yamashita, "Deep learning-based image recognition for autonomous driving," *IATSS Res.*, vol. 43, no. 4, pp. 244–252, 2019.
- [12] S. M. Abbas and S. N. Singh, "Region-based Object Detection and Classification using Faster R-CNN," *Int. Conf. &quot;Computational Intell. Commun. Technol. CICT 2018*, no. Cict, pp. 1–6, 2018.