

**KARYA ILMIAH:  
SEMINAR INTERNASIONAL  
(Invited Speaker)**

*Pesticide and Congenital Anomaly*

**dr. Supangat M.Kes., Ph.D Sp.BA**

**NIP. 197304241999031002**

- Tenaga Pengajar Bagian Paraklinik  
Fakultas Kedokteran Universitas Jember



**KEMENTERIAN PENDIDIKAN DAN KEBUDAYAAN  
UNIVERSITAS JEMBER**

---

Karya Ilmiah Dipresentasikan dalam Seminar Internasional :  
International Conference on Agromedicine & Tropical Disease  
(ICATD3) September 12<sup>th</sup> - 13<sup>th</sup> 2020, Jember East Java,  
Indonesia





THE THIRD

# ICATD

International Conference on  
AGROMEDICINE & TROPICAL DISEASES  
FACULTY OF MEDICINE - UNIVERSITY OF JEMBER

INTEGRATED APPROACHES ON PREVENTION, CURATIVE AND CONTROL  
OF ZOO NOTIC AND EMERGING DISEASES IN AGROMEDICINE FIELD

**ABSTRACT BOOK**

JEMBER - EAST JAVA  
SEPTEMBER 12<sup>TH</sup> - 13<sup>TH</sup> 2020



## ACKNOWLEDGEMENTS

The Organizers ICATD 2020 express sincere appreciation and grateful thanks to all those who have contributed their kind support to facilitate this conference.



## WELCOMING ADDRESS

Dear distinguished guest and participants,

On behalf of the committee of The 3rd International Conference on Agromedicine and Tropical Diseases (ICATD) 2020, it is a privilege and my great honour to welcome you to this virtual conference. This is a biannual conference organized by Faculty of Medicine University of Jember. Due to the pandemic situation, we have to conduct this conference virtually.

The needs for the Agromedicine research for the improvement on occupational and environmental health and safety in agriculture are growing. The challenges in zoonotic and emerging diseases such as a recent covid-19 pandemic situation are also increasing that require global solution to prevention and elimination. To address the approaches in successful handling of complex challenges, the theme of this conference is kept as 'Integrated approaches on prevention, curative, and control of zoonotic and emerging diseases in Agromedicine field.

This event aims at providing a forum for presentation and discussion of the current and new research on this topic along with dissemination of relevant information among scientists, medical doctors, practitioners, researchers, and other professional from different countries. There are distinguished speakers from Ministry of Agriculture, the expert from Australia, Philippines, Sweden, as well as Indonesia. There are more than 40 researches will be presented in this conference, and approximately 200 participants from Indonesia, Malaysia, Philippines, and Argentina will join the event. And surely, this event will be an outstanding place for networking opportunities to discuss interesting ideas and develop the fruitful project in the future. As a major goal of this event, we hope that it can be an excellent chance for coordinating new partnerships which advance collaboration in the research field as well as the career of all participants.

The insight and hard work of the members both technical and organizing committees have made this event possible. Each member mad significant contribution toward the success of this conference, and we thank everybody for their valuable support. Finally, I would like to express our sincere thanks and appreciation to all participants and colleagues for their indispensable support in organizing the event.

**Erma Sulistyaningsih**  
Chairman of the 3rd ICATD Organizing Committee





CONTENT

<b>ACKNOWLEDGEMENTS</b> .....	1
<b>WELCOMING ADDRESS</b> .....	2
<b>CONTENT</b> .....	3
<b>GENERAL INFORMATION FOR THE PARTICIPANTS</b> .....	9
<b>3<sup>rd</sup> ICATD COMMITTEE</b> .....	10
<b>TIMETABLE</b> .....	11
<b>DAY 1 : 12 September 2020</b> .....	11
<b>DAY 2 : 13 September 2020</b> .....	11
<b>SCIENTIFIC PROGRAM</b> .....	12
<b>ORAL PRESENTATION</b> .....	12
<b>POSTER PRESENTATION</b> .....	15
<b>ABSTRACT: KEYNOTE SPEAKER</b> .....	16
<b>POTENTIAL EMERGING INFECTIOUS DISEASES IN WILD ANIMALS, LIVESTOCK, AND HUMAN</b> Indi Dharmayanti .....	18
<b>PESTICIDE EXPOSURE AND CONGENITAL ANOMALY</b> Supangat .....	19
<b>INTEGRATED APPROACHES ON PREVENTION IN FARMERS' HEALTH NATIONALLY AND INTERNATIONALLY</b> Susan Alison Brumby .....	20
<b>MOLECULAR IMMUNOLOGY OF COVID-19 AND ZOOONOTIC DISEASE</b> Wayan Tunas Artama.....	21
<b>THE R.E.A.P INITIATIVE: A LEARNING INSTITUTION'S APPROACH TO MITIGATE, PREVENT OR ARREST EMERGING DISEASES IN THE COMMUNITY</b> Fatima May R. Tesoro .....	22





THE HEALTH AND SAFETY PROGRAMS FOR FARMERS IN SWEDEN Peter Lundqvist.....	23
<b>ABSTRACT : ORAL PRESENTATION</b> ..... 24	
DURATION DIFFERENCES OF THE DENIAL-ACCEPTANCE OF THE KÜBLER-ROSS CYCLE AFTER DIAGNOSED HIV BASED ON GENDER Muhammad Reza Febriliant, Niniek Budiarti .....	25
COPING BEHAVIORS FOR SUPPORT AMONG FAMILY DURING THE COVID-19 PANDEMIC Sugeng Mashudi, Sri Susanti, Sulistyo Andarmoyo, Elok Yulidaningsih, Yuzana binti Mohd Yusop .....	26
DETERMINANTS OF STUNTING AND UNDERNUTRITION IN CHILDREN IN THE AGRICULTURAL AREA OF JEMBER REGENCY, INDONESIA Ancah Caesarina Novi Marchianti, Dwita Aryadina Rachmawati, Ida Srisurani Wiji Astuti, Angga Mardro Raharjo, Rony Prasetyo.....	27
DEVELOPMENT OF HEALTHY FOOD AND PACKAGING FROM BACTERIAL SECONDARY METABOLITES <i>Acetobacter xylinum</i> Pujiati, Erlia Narulita, N. Nurhayati .....	28
GASTROPROTECTIVE EFFECT OF ONION PEEL ( <i>Allium cepa L. var Ascalonium</i> ) EXTRACT ON WISTAR RATS INDUCED BY MEFENAMIC ACID Awalya Rahma Putri, Dina Helianti, Nindya Shinta Rumastika .....	29
MICROCRYSTALLINE CELLULOSE DERIVED FROM RICE ( <i>Oryza sativa L.</i> ) STRAW WASTE AS BINDER FOR TABLET FORMULATIONS Virgilio Y. Tan li .....	30
SPATIAL ANALYSIS OF CRYPTOSPORIDIOSIS IN LIVESTOCK COMMUNITY IN MLATI DISTRICT, SLEMAN, YOGYAKARTA Wiwien S. Utami, Elsa H. Murhandarwati, Wayan T. Artama, Hari Kusnanto .....	31
MIMBA LEAF THERAPY CAUSES HIGH LEVEL OF TGF- $\beta$ EXPRESSION AND LOW EXPRESSION OF TNF-A IN THE SPLEEN OF MENCIT IN INFECTION OF <i>Plasmodium berghei</i> Zainabur Rahmah, Doby Indrawan .....	32
IMPROVING THE QUALITY OF <i>Kombucha cascara</i> AS FUNCTIONAL BEVERAGE Aurora Urbahillah, Jay Jayus, N. Nurhayati .....	33
CELL CULTURE AS THE MOST CERTAIN WAY OF DIAGNOSIS IN RABIES INFECTION Ariyani Noviantari, Khariri .....	34
DENGUE FEVER RISK MAPPING AREA BASED ON BEHAVIOUR	





PREVENTION ON FOUR SUB DISTRICTS IN JEMBER DISTRICT Bhisma Satya Dharma, Isa Ma'rufi, Dewi Rokhmah .....	35
DEVELOPMENT OF A NOVEL DIAGNOSTIC KIT CANDIDATE TO DETECT DENGUE ANTIBODY, USING CO-AGGLUTINATION METHOD, UTILIZING PROTEIN A POSITIVE <i>Staphylococcus aureus</i> AS A CARRIER Eka Noneng Nawangsih, Lia Siti Halimah, Euis Reni Yuslianti .....	36
THE THREAT OF ZOOONOTIC INFECTIONS THAT LURK FROM THE CULTURE OF CONSUMPTION OF WILD ANIMAL MEAT Khariri, Lisa Andriani Lienggonegoro .....	37
DISTRIBUTION OF RABIES THAT INFECT HUMANS IN INDONESIA DURING ONE LAST DECADE Putri Reno Intan, Khariri, Zainal Khoirudin .....	38
IN SILICO MOLECULAR DOCKING STUDY ON SUBSTANCES FROM <i>Psidium guajava</i> AGAINST DENGUE PROTEASE NS2B/NS3 Nanda Eka Sri Sejati, Elvia Rahmi Marga Putri .....	39
IN VITRO ANALYSIS OF HUMAN HUMORAL IMMUNE RESPONSE AGAINST 31 kDa IMMUNOGENIC PROTEIN FRACTION FROM SALIVARY GLAND OF <i>Aedes albopictus</i> Syubbanul Wathon, Yasir Mubarak, Rike Oktarianti, Kartika Senjarini .....	40
SPECIES DISTRIBUTION OF FUNGAL ISOLATED FROM SPUTUM OF PREVIOUS TB PATIENTS AND ITS SUSCEPTIBILITY TOWARDS ITRACONAZOLE Vincent Susanto, Anna Rozaliyani, Diah Handayani, Erlina Burhan, Harmi Rosianawati, Mulyati Tugiran, Ridhawaty Syam, Findra Setianingrum, Robiatul Adawiyah .....	41
TOXOPLASMOSIS MOLECULAR DETECTION OF GOAT MEATS FROM SATAY KIOSKS AT KULON PROGO REGENCY, INDONESIA Aris Purwantoro, Wayan Tunas Artama, Bambang Sumiarto, Adi Heru Husodo, Nabila Cahyarani, Riandanu Dharmawan, Elkautsar Rizqi Ramadhanti .....	42
COMPARATIVE STUDY ON ANTICANCER ACTIVITY OF COMPOUND EXTRACTED FROM <i>Caesalpinnia sappan</i> ON BREAST CANCER CELL LINE (MCF-7) Suyatmi, Indriaswari Kirana Suri, Tri Agusti Solikhah, Reza Noviarta Pesik .....	43
THE BACTERIA AND PARASITE PATTERNS IN FLIES DO NOT ASSOCIATE WITH THE PREVALENCE OF FLY VECTOR-BORNE DISEASES AT THE DAIRY FARM Riza Indira Fadillah Zam Zam, Erma Sulistyaningsih, Ancah Caesarina Novi Marchianti .....	44
THE REPRESSION EFFECT OF CELL FREE SUPERNATANT OF <i>Lactobaccilus helveticus</i> C2 ON BIOFILM-RELATED GENES OF MDR <i>Klebsiella Pneumoniae</i> Tri Yudani Mardining Raras, Intan Rakhma Kinanti .....	45





THE DBL2B-PFEMP1 RECOMBINANT PROTEIN OF INDONESIAN <i>Plasmodium falciparum</i> INDUCES SPECIFIC POLYCLONAL IMMUNOGLOBULIN-G IN WISTAR RATS Sheilla Rachmania, Erma Sulistyarningsih, Anak Agung Istri Ratnadewi .....	46
IMMUNOGENIC PROTEIN OF SALIVARY GLAND FROM <i>Aedes albopictus</i> Rike Oktarianti, Rochmatul Nuryu Khasanah, Syubbanul Wathon, Kartika Senjarini .....	47
PROFILE OF IMMUNE RESPONSE AGAINST INFECTION HOOKWORM IN PLANTATION WORKERS IN JEMBER Bagus Hermansyah, Yunita Armiyanti, Yudha Nurdian .....	48
ANTIMALARIAL ACTIVITY OF MAHAGONY SEED ETHANOLIC EXTRACT IN BALB/C MICE INFECTED WITH <i>Plasmodium Berghei Anka</i> AND THE CORELATION OF PARASITEMIA AND PLASMA LEVEL OF IFN- $\gamma$ Ni Ketut Yuliana Sari, Heny Arwati, Indah Setyawati Tantular .....	49
DETECTION OF BRUCellosIS IN IMPORTED DAIRY CATTLE DURING ANIMAL QUARANTINE PROCESS TO PREVENT DISEASE TRANSMISSION TO HUMANS Fauzul Muna, Khariri, Ambar Retnowati, Yuswandi.....	50
FUNGAL KERATITIS WITH CORNEAL ULCER IN FARMER Nugraha Wahyu Cahyana .....	51
SPECIES DISTRIBUTION OF FUNGAL ISOLATED FROM LUNG CANCER PATIENTS AND ITS SUSCEPTIBILITY TO ITRACONAZOLE IN PERSAHABATAN HOSPITAL Marshal Achmad Wachdin, Anna Rozaliyani, Jamal Zaini Abul A'la Al Maududi, Mulyati Tugiran, Ridhawaty Syam, Findra Setianingrum, Robiatul Adawiyah .....	52
EXPRESSION OF SECRETORY LEUKOCYTE PROTEASE INHIBITOR IN <i>Saccharomyces cereviciae</i> BJ1824 Evi Umayah Ulfa, Elly Munadziroh, Hermansyah, Ni Nyoman Tri Puspaningsih.....	53
ANTIBACTERIAL AND WOUND HEALING ACTIVITY OF EXTRACT ETHANOLIC FLOWERS OF <i>Melastoma malabathricum</i> L Isnaini, Ika K. Oktaviyanti, Lia Y. Budiarti .....	54
HEALTHY MODULATION OF MICROFLORA USING ACTIVATED BIOCHAR Solikha Solikha, Jay Jayus, Nurhayati Nurhayati.....	55
<b>ABSTRACT : POSTER PRESENTATION</b> .....	56
ANTIBACTERIAL ACTIVITY OF CELL FREE FERMENTATION SUPERNATANT OF RED PASSION FRUIT PULP ( <i>Passiflora Edulis Sims.</i> ) AGAINTS <i>Escherichia coli</i> EXTENDED SPECTRUM BETA LACTAMASE ( <i>E.Coli</i> Esbl) AND METHICILLIN RESISTANT <i>Staphylococcus aureus</i> (MRSA) Iif H. Nurrosyidah, Isnaeni, Ni M. Mertaniasih.....	57



<b>Tamarindus indica SEED EXTRACT FOR PREVENTING MEMORY IMPAIRMENT IN RAT MODEL OF ALZHEIMER'S DISEASE</b> Muhammad Ihwan Narwanto, Masruroh Rahayu, Setyawati Soeharto, Nurdiana, Mochammad Aris Widodo.....	58
<b>HYPOGLICEMIC AND HYPOLIPIDEMIC CAPACITY OF JAVA CHERRY STEEPING (<i>Muntingia calabura</i> L.) ON DIABETIC RATS</b> Ratna Indriawati, Adnal Khemal Pasha.....	59
<b>THE DIFFERENCE IN MILKING TECHNIQUES AGAINST <i>Salmonella Sp.</i> CONTAMINATION IN AJUNG AND ARJASA DISTRICTS, JEMBER REGENCY, INDONESIA</b> Enny Suswati, Vera Asmita Fitriani, Edy Junaidi .....	60
<b>VACCINATION WITH ANTI-IDIOTYPE ANTIBODY AND NANO-CHITOSAN ADJUVANT AGAINST ANTIBODY RABIES TITER IN RATS</b> Sayu Putu Yuni Paryati, Shiffa Ramadhanti, Khomaini Hasan .....	61
<b>ANTIMICROBIAL POTENCY OF SQUID INK HEXANE EXTRACT TO PERIODONTAL BACTERIA <i>Fusobacterium nucleatum</i> BIOFILM</b> Kristanti Parisihni, Vania Dealaura Christania, Yulie Emilda Akwan, Yoifah Rizka Wedarti .....	62
<b>ROLE OF OUTER MEMBRANE PROTEIN (OMP) 32 kDa <i>Klebsiella pneumoniae</i> AS A HEMAGGLUTININ PROTEIN AND ADHESIN</b> Dini Agustina, Bima Setia Sandya Nugraha, M. Ali Shodikin, Diana Chusna Mufida, Enny Suswati, Bagus Hermansyah.....	63
<b>ORANGE PEEL AND SUGAR JAVA AS AN ALTERNATIVE TO NATURAL DISINFECTANT IN COVID-19 PREVENTION EFFORTS IN THE TOBACCO FARMING AREA, COASTAL AREA, JEMBER DISTRICT</b> Ibnu Mubarak, Astika Shiella Nabila Putri, Clarrisa Ayu Candra Kirana, Kristanti Wahyuningtiyas, Mury Ririanty, Nabila Zandra Kartika, and Rofiah Adawiyah Wisudawati Ning Tias.....	64
<b>IN VITRO OVICIDAL ACTIVITY OF COMBINATION <i>Illicium verum</i> EXTRACT AND COCONUT OIL AGAINST <i>Pediculus humanus capitis</i></b> Yunita Armiyanti, Anzil Aziza, Ika Rahmawati Sutejo.....	65
<b>ANALYSIS OF SHORT CHAIN FATTY ACID (SCFA) AFTER CONSUMPTION OF YOUNG COCONUT IN HEALTHY HUMANS</b> Elly Nurus Sakinah, Aris Prasetyo, Jauhar Firdaus.....	66
<b>EXTRACT OF <i>Tamarindus indica</i> SEED EFFECT ON TESTICULAR DAMAGE IN ALUMINIUM CHLORIDE (ALCL3) INDUCED RAT</b> Rena Normasari, Muhammad Iqbal Fauzi, Ayu Munawaroh Aziz .....	67



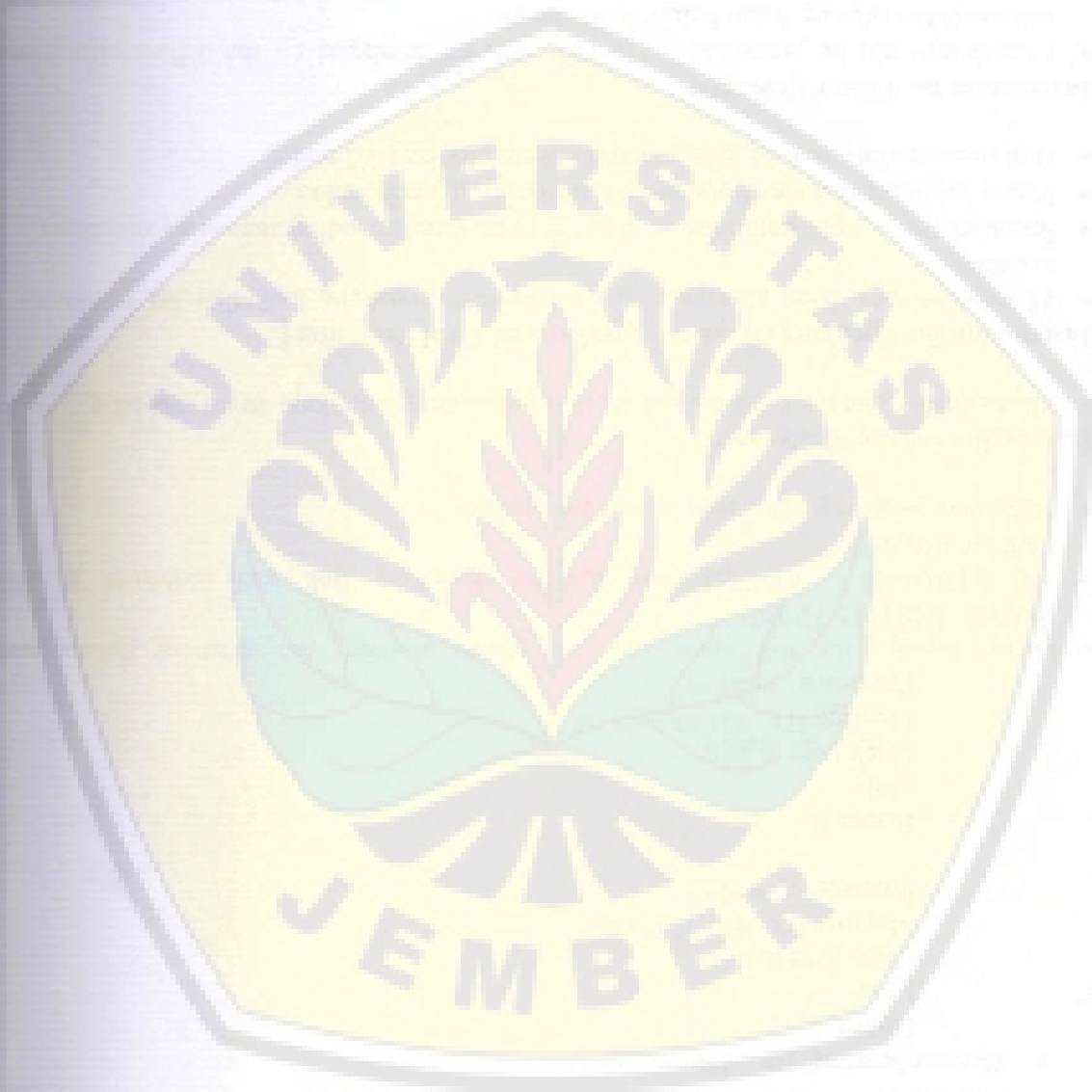


**THE APPROACH OF ONE HEALTH CONCEPT IN ADDRESSING THE SPREAD OF ZONOTIC DISEASES IN INDONESIA**

Faika Rachmawati, Khariri ..... 68

**THE PROTECTIVENESS OF DOGS AND CATS POST RABIES VACCINATION IN BANJARBARU, INDONESIA**

Harwanto, Heru Susetya, Khrisdiana Putri, Elfa Zuraida, Widodo Pujiatmoko ..... 69





## GENERAL INFORMATION FOR THE PARTICIPANTS

### Instruction for all participants

- Registration includes:
  - The 3<sup>rd</sup> ICATD 2020 abstract e-book
  - Certificate of attendance
- The conference will be held via Zoom with the link below:
  - **Plenary Lecture/Main Room**  
Link:  
[Click here to join](#)  
Meeting ID : 992 4533 4716  
Password : 065773
  - **Paralel Session (Oral Presentation)**
    - **Room A**  
Link :  
[Click here to join](#)  
Meeting ID : 920 4275 5085  
Password : 185267
    - **Room B**  
Link :  
[Click here to join](#)  
Meeting ID : 941 0834 5688  
Password : 068838
- Please insert your full name on your zoom account, not alias or device name (NAME\_INSTITUTION)
- WE STRONGLY ADVISE you not to share the link and password to NON PARTICIPANTS.
- Make sure your internet access is well established.

### Instruction for the Moderator

- Please ensure that the sessions and speaker presentations are kept strictly on time.

### Instruction for Speakers (Keynote Speaker and Oral Presenter)

- 45 minutes have been allocated for each keynote speakers, including for answering the questions.
- Speakers for oral presentations were given 10 minutes including answering questions.
- Please be aware that the above times must be strictly adhered to.
- Oral presentations will be assessed and selected for best 1,2 and 3.

### Instruction for Poster Presenter

- Posters will not be presented. They only will be displayed by the officer after plenary session in the plenary room before lunch break.
- Posters will be assessed and selected for the best 1,2 and 3.





## The 3<sup>rd</sup> ICATD COMMITTEE

Steering Committee	dr. Supangat, M.Kes, Ph.D, SpBA dr. Ancah Caesarina Novi Marchianti, Ph.D Dr.dr. Diana Chusna Mufida, M.Si dr. Bagus Hermansyah, M.Biomed
Organizing Committee Chairman	Dr.rer.biol.hum. dr. Erma Sulistyaningsih, M.Si
Secretary	Dr. dr. Hairrudin, M.Kes
Treasurer	dr. Dini Agustina, M.Biomed Diyah Anggraeni, S.E.
Secretariat division	dr. Rosita Dewi, M.Biotek
Publication division	dr. Sheila Rachmania, M.Biotek Laksono Hadi Prasetyo, A.Md. Kep
Event division	dr. Cicih Komariah, Sp.M dr. Ayu Munawaroh Aziz, M.Biomed dr. Dwita Aryadina Rachmawati, M.Kes dr. Ida Sri Surani Wiji Astuti, M.Kes
Scientific division	Dr. dr. Yunita Armiyanti, M.Kes dr. Zahrah Febianti, M.Biomed dr. Elly Nurus Sakinah, M.Si dr. Rena Normasari, M.Biomed dr. Desie Dwi Wisudanti, M.Biomed
Information technology division	dr. Azham Purwandhono, M.Si., Sp.S dr. Jauhar Firdaus, M.Biotek Ahmad Kodri Riyandoko, A.Md.Kep Ilyas Afandi Rizki Mardiana
Public relation division	dr. Inke Kusumastuti, M.Biomed., Sp.KJ
Food and beverage division	Ns. Novi Wiarti K.S.



TIMETABLE

Time (GMT+7)	Activity	Annotation
<b>Day 1: 12 September 2020</b>		
08.00-08.30 am	<b>Registration Day 1</b>	<b>Committee</b>
	<b>Opening Ceremony</b> display: "Indonesia Raya" "Hymne UNEJ"	<b>Committee</b>
08.30-09.00 am	<b>Welcome Speech</b> 1. Chairman of 3 <sup>rd</sup> ICATD 2. Rector of Jember University	1. Dr. rer. Biol. Hum. dr. Erma S, M.Si 2. Dr. Ir. Iwan Taruna, M.Eng
09.00-10.00 am	<b>Keynote Speech</b> Head of Balai Besar Penelitian Veteriner, Bogor-Indonesia <i>Dr. Drh. NLP. Indi Dharmayanti, M.Si.</i>	<b>MC:</b> dr. Dwita Aryadina Rachmawati, M.Kes
10.00-12.00 am	<b>Plenary Lecture I</b> 1. <i>dr. Supangat, M.Kes., Ph.D., Sp.BA</i> 2. <i>Prof. Susan Alison Brumby, Ph.D.</i> 3. <i>Discussion</i>	<b>Moderator:</b> dr. Laksmi Indreswari, Sp.B
12.00-12.30 am	<b>Poster Slide Show</b>	<b>Committee</b>
12.30-13.00 am	<b>LUNCH BREAK</b>	<b>Committee</b>
13.00-14.30 am	<b>Paralel session (Class A and Class B)</b> <b>Oral Presentation I</b>	<b>Moderator:</b> dr. Pulong Wijang Pralampita, Ph.D. dr. Elvia Rahmi Marga Putri
<b>Day 2: 13 September 2020</b>		
08.30-09.00 am	<b>Registration Day 2</b>	<b>Committee</b>
09.00-12.00 am	<b>Plenary Lecture II</b> 1. <i>Prof. Dr. drh. Wayan Tunas Artama</i> 2. <i>Fatima May R. Tesoro, RPh, MSPharm</i> 3. <i>Prof. Peter Lundqvist, Ph.D.</i> 4. <i>Discussion</i>	<b>Moderator:</b> dr. Inke Kusumastuti, M.Biomed., Sp.KJ
12.00-12.30 am	<b>Poster Slide Show</b> <b>Closing Ceremony</b>	<b>Committee</b>
12.30-13.00 am	<b>LUNCH BREAK</b>	<b>Committee</b>
13.00-14.30 am	<b>Paralel session (Break Out Room)</b> <b>Oral Presentation II</b>	<b>Moderator:</b> dr. Pulong Wijang Pralampita, Ph.D. dr. Elvia Rahmi Marga Putri
15.00-15.30 am	<b>Best Poster &amp;</b> <b>Oral Presentation Announcement</b> <b>CLOSING CEREMONY</b>	<b>Chairman of 3<sup>rd</sup> ICATD</b>





SCIENTIFIC PROGRAM

ORAL PRESENTATION

DAY 1 : 12 September 2020 (13.00 – 14.30 WIB)

ROOM A

No	Author's Name	Institution	Title
1	Muhammad Reza Febriliant, Niniek Budiarti	Saiful Anwar General Hospital, Brawijaya University	Duration Differences of The Denial-Acceptance of The Kübler-Ross Cycle After Diagnosed HIV Based on Gender
2	Sugeng Mashudi, Sri Susanti, Sulistyo Andarmoyo, Elok Yulidaningsih, Yuzana binti Mohd Yusop	Malang Health Polytechnic, Trenggalek Campus	Coping Behaviors for Support Among Family During The Covid-19 Pandemic
3	Ancah Caesarina Novi Marchianti, Dwita Aryadina Rachmawati, Ida Srisurani Wiji Astuti, Angga Mardro Raharjo, Rony Prasetyo	University of Jember	Determinants of Stunting and Undernutrition in Children in The Agricultural Area of Jember Regency, Indonesia
4	Pujiati, Erlia Narulita, N. Nurhayati	University of Jember	Development of Healthy Food and Packaging from Bacterial Secondary Metabolites <i>Acetobacter xylinum</i>
5	Awalya Rahma Putri, Dina Helianti, Nindya Shinta Rumastika	University of Jember	Gastroprotective Effect Of Onion Peel ( <i>Allium cepa L. var Ascalonium</i> ) Extract On Wistar Rats Induced By Mefenamic Acid
6	Virgilio Y. Tan Ii	Riverside College, Inc., Bacolod City, Philippines	Microcrystalline Cellulose Derived From Rice ( <i>Oryza sativa L.</i> ) Straw Waste As Binder for Tablet Formulations
7	Wiwien S. Utami, Elsa H. Murhandarwati, Wayan T. Artama, Hari Kusnanto	University of Jember	Spatial Analysis of Cryptosporidiosis in Livestock Community in Mlati District, Sleman, Yogyakarta

ROOM B

No	Name	Institution	Title
1	Zainabur Rahmah, Doby Indrawan	Maulana Malik Ibrahim Islamic Public University	Mimba Leaf Therapy Causes High Level of TGF- $\beta$ Expression and Low Expression of TNF- $\alpha$ in The Spleen of Mencil in Infection of <i>Plasmodium berghei</i>
2	Aurora Urbahillah, Jay Jayus, N. Nurhayati	University of Jember	Improving The Quality of <i>Kombucha cascara</i> as Functional Beverage
3	Ariyani Noviantari, Khariri	Center for Research and Development of Biomedical and Basic Health	Cell Culture as The Most Certain Way of Diagnosis In Rabies Infection

Abstracts Book

The Third Virtual Conference ICATD





		Technology	
4	Bhisma Satya Dharma, Lisa Ma'rufi, Dewi Rokhmah	University of Jember	Dengue Fever Risk Mapping Area Based on Behaviour Prevention on Four Sub Districts in Jember District
5	Eka Noneng Nawangsih, Lia Siti Halimah, Euis Reni Yuslianti	General Ahmad Yani University	Development of a Novel Diagnostic Kit Candidate To Detect Dengue Antibody, Using Co-Agglutination Method, Utilizing Protein a Positive <i>Staphylococcus aureus</i> As a Carrier
6	Khariri, Lisa Andriani Lienggonegoro	Center for Research and Development of Biomedical and Basic Health Technology	The Threat of Zoonotic Infections That Lurk From The Culture of Consumption of Wild Animal Meat
7	Putri Reno Intan, Khariri, Zainal Khoirudin	Center for Research and Development of Biomedical and Basic Health Technology	Distribution of Rabies That Infect Humans In Indonesia During One Last Decade
8	Nanda Eka Sri Sejati, Elvia Rahmi Marga Putri	dr. Soebandi Regional General Hospital, Jember	In Silico Molecular Docking Study on Substances From <i>Psidium guajava</i> Against Dengue Protease NS2B/NS3

DAY 2 : 13 SEPTEMBER 2020 (13.00 – 14.30 WIB)

ROOM A

No	Name	Institution	Title
1	Syubbanul Wathon, Yasir Mubarak, Rike Oktarianti, Kartika Senjarini	University of Jember	In Vitro Analysis of Human Humoral Immune Response Against 31 Kda Immunogenic Protein Fraction from Salivary Gland of <i>Aedes albopictus</i>
2	Vincent Susanto, Anna Rozaliyani, Diah Handayani, Erlina Burhan, Harmi Rosianawati, Mulyati Tugiran, Ridhawaty Syam, Findra Setianingrum, Robiatul Adawiyah	University of Indonesia	Species Distribution of Fungal Isolated from Sputum of Previous Tb Patients and Its Susceptibility towards Itraconazole
3	Aris Purwantoro, Wayan Tunas Artama, Bambang Sumiarto, Adi Heru Husodo, Nabila Cahyarani, Riandanu Dharmawan, Elkautsar Rizqi Ramadhanti	Gadjah Mada University	Toxoplasmosis Molecular Detection of Goat Meats from Satay Kiosks at Kulon Progo Regency, Indonesia
4	Suyatmi, Indriaswari Kirana Suri, Tri Agusti Solikhah, Reza Novierta Pesik	Sebelas Maret University	Comparative Study on Anticancer Activity of Compound Extracted From <i>Caesalpinia sappan</i> on Breast Cancer Cell Line (MCF-7)

Abstracts Book

The Third Virtual Conference ICATD





5	Riza Indira Fadillah Zam Zam, Erma Sulistyarningsih, Ancah Caesarina, Novi Marchianti	University of Jember	The Bacteria and Parasite Patterns In Flies Do Not Associate with The Prevalence of Fly Vector-Borne Diseases at The Dairy Farm
6	Tri Yudani Mardining Raras, Intan Rakhma Kinanti	Brawijaya University	The Repression Effect of Cell Free Supernatant of <i>Lactobaccilus helveticus</i> C2 on Biofilm-Related Genes of Mdr Klebsiella Pneumoniae
7	Sheilla Rachmania, Erma Sulistyarningsih, Anak Agung Istri Ratnadewi	University of Jember	The DBL2B-PFEMP1 Recombinant Protein of Indonesian <i>Plasmodium falciparum</i> Induces Specific Polyclonal Immunoglobulin-G In Wistar Rats
8	Rike Rochmatul Khasanah, Wathon, Kartika Senjarini, Oktarianti, Nuryu Syubbanul	University of Jember	Immunogenic Protein of Salivary Gland from <i>Aedes albopictus</i>

BOOK B

No	Name	Institution	Title
1	Bagus Hermansyah, Yunita Armyanti, Yudha Nurdian	University of Jember	Profile of Immune Response Against Infection Hookworm in Plantation Workers in Jember
2	Ni Ketut Yuliana Sari, Heny Arwati, Indah Setyawati Tantular	Airlangga University	Antimalarial Activity of Mahogany Seed Ethanolic Extract in Balb/C Mice Infected With Plasmodium Berghei Anka and The Corelation of Parasitemia and Plasma Level of IFN- $\gamma$
3	Fauzul Muna, Khariri, Ambar Retnowati, Yuswandi	Center for Research and Development of Biomedical and Basic Health Technology	Detection of Brucellosis in Imported Dairy Cattle During Animal Quarantine Process to Prevent Disease Transmission to Humans
4	Nugraha Wahyu Cahyana	University of Jember	Fungal Keratitis with Corneal Ulcer in Farmer
5	Marshal Achmad Wachdin, Anna Rozaliyani, Jamal Zaini Abul A'la Al Maududi, Mulyati Tugiran, Ridhawaty Syam, Findra Setianingrum, Robiatul Adawiyah	University of Indonesia	Species Distribution of Fungal Isolated From Lung Cancer Patients and Its Susceptibility to Itraconazole in Persahabatan Hospital
6	Evi Umayah Ulfa, Elly Munadziroh, Hermansyah, Ni Nyoman Tri Puspaningsih	University of Jember	Expression of Secretary Leukocyte Protease Inhibitor in <i>Saccharomyces cereviciae</i> BJ1824
7	Isnaini, Ika K. Oktaviyanti, Lia Y.	Lambung Mangkurat	Antibacterial and Wound Healing Activity of Extract Ethanolic Flowers of



	Budiarti	University	<i>Melastoma malabathricum</i> L
8	Solikha Solikha, Jay Jayus, Nurhayati Nurhayati	University of Jember	Healthy Modulation of Microflora Using Activated Biochar

**POSTER**

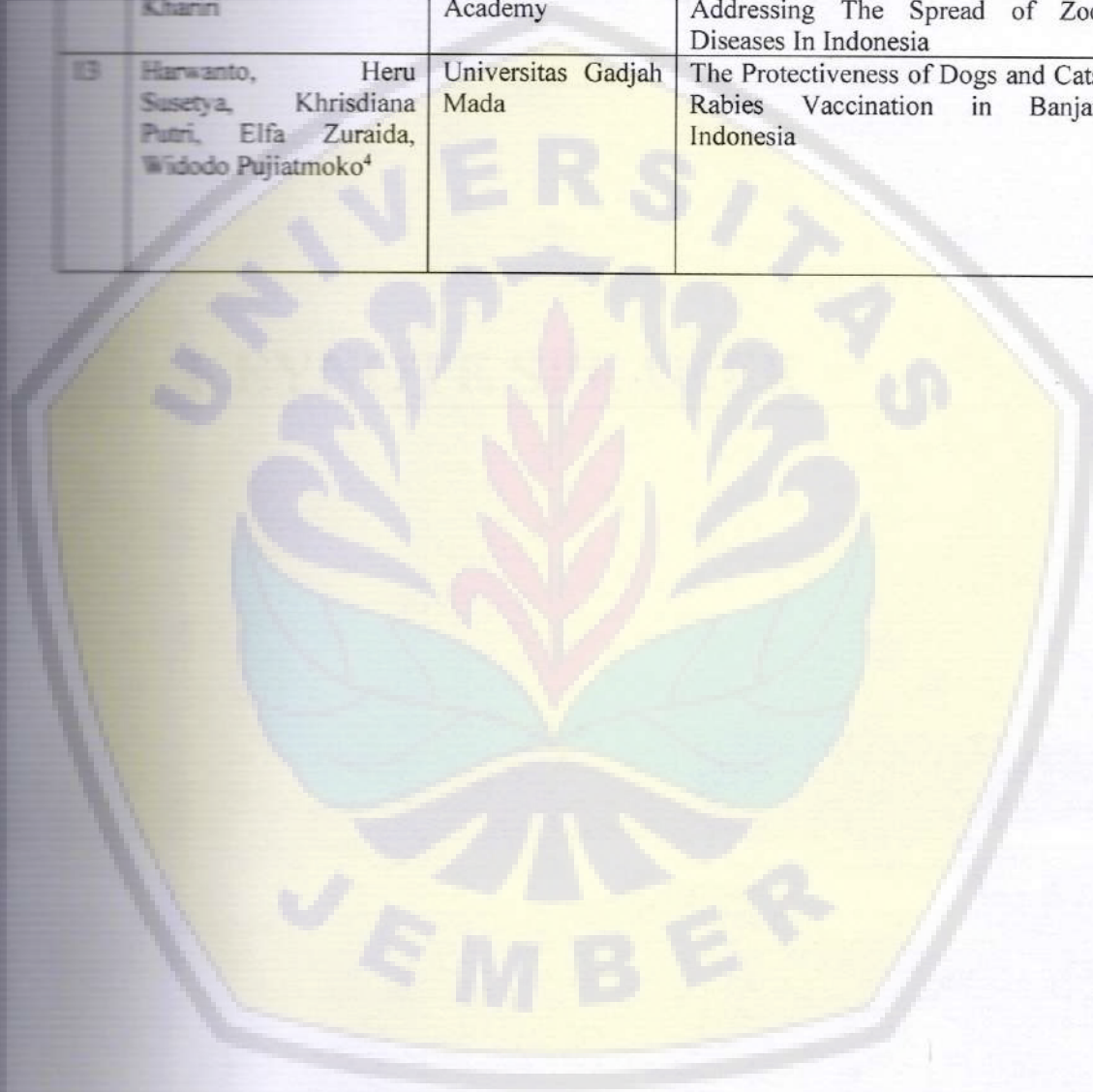
12-13 September 2020 (12.00 – 12.30 WIB)

No	Name	Institution	Title
1	Ef H. Nurrosyidah, Isnaeni, Ni M. Mertaniasih	University of Jember	Antibacterial Activity of Cell Free Fermentation Supernatant of Red Passion Fruit Pulp ( <i>Passiflora Edulis Sims.</i> ) Againsts <i>Escherichia coli</i> Extended Spectrum Beta Lactamase ( <i>E.Coli</i> Esbl) and Methicillin Resistant <i>Staphylococcus aureus</i> (MRSA)
2	Muhammad Ihwan Narwanto, Masrurroh Rahayu, Soeharto, Nurdiana, Mochammad Aris Widodo	University of Jember, Brawijaya University	<i>Tamarindus indica</i> Seed Extract for Preventing Memory Impairment in Rat Model of Alzheimer's Disease
3	Ratna Indriawati, Adnal Khemal Pasha	Yogyakarta Muhammadiyah University	Hypoglycemic and Hypolipidemic Capacity of Java Cherry Steeping ( <i>Muntingia calabura</i> L.) on Diabetic Rats
4	Enny Suswati, Vera Asmita Fitriani, Edy Junaidi	University of Jember	The Difference in Milking Techniques Against <i>Salmonella Sp.</i> Contamination In Ajung And Arjasa Districts, Jember Regency, Indonesia
5	Sayu Putu Yuni Paryati, Shiffa Ramadhanti, Khomaini Hasan	Universitas Jenderal Achmad Yani	Vaccination with Anti-Idiotypic Antibody and Nano-Chitosan Adjuvant Against Antibody Rabies Titer in Rats
6	Kristanti Parisihni, Vania Dealaura Christania, Yulie Emilda Akwan, Yoifah Rizka Wedarti	Hang Tuah University	Antimicrobial Potency of Squid Ink Hexane Extract to Periodontal Bacteria <i>Fusobacterium nucleatum</i> Biofilm
7	Dini Agustina, Bima Setia Sandya Nugraha, M. Ali Shodikin, Diana Chusna Mufida, Enny Suswati, Bagus Hermansyah	University of Jember	Role of Outer Membrane Protein (OMP) 32 kDa <i>Klebsiella pneumoniae</i> as a Hemagglutinin Protein and Adhesin
8	Ibnu Mubarak, Astika Shiella Nabila Putri, Clarrisa Ayu Candra Kirana, Kristanti Wahyuningtiyas, Mury Ririanty, Nabila Zandra Kartika, and Rofiah Adawiyah Wisudawati Ning Tias	University of Jember	Orange Peel and Sugar Java as An Alternative to Natural Disinfectant in Covid-19 Prevention Efforts in The Tobacco Farming Area, Coastal Area, Jember District

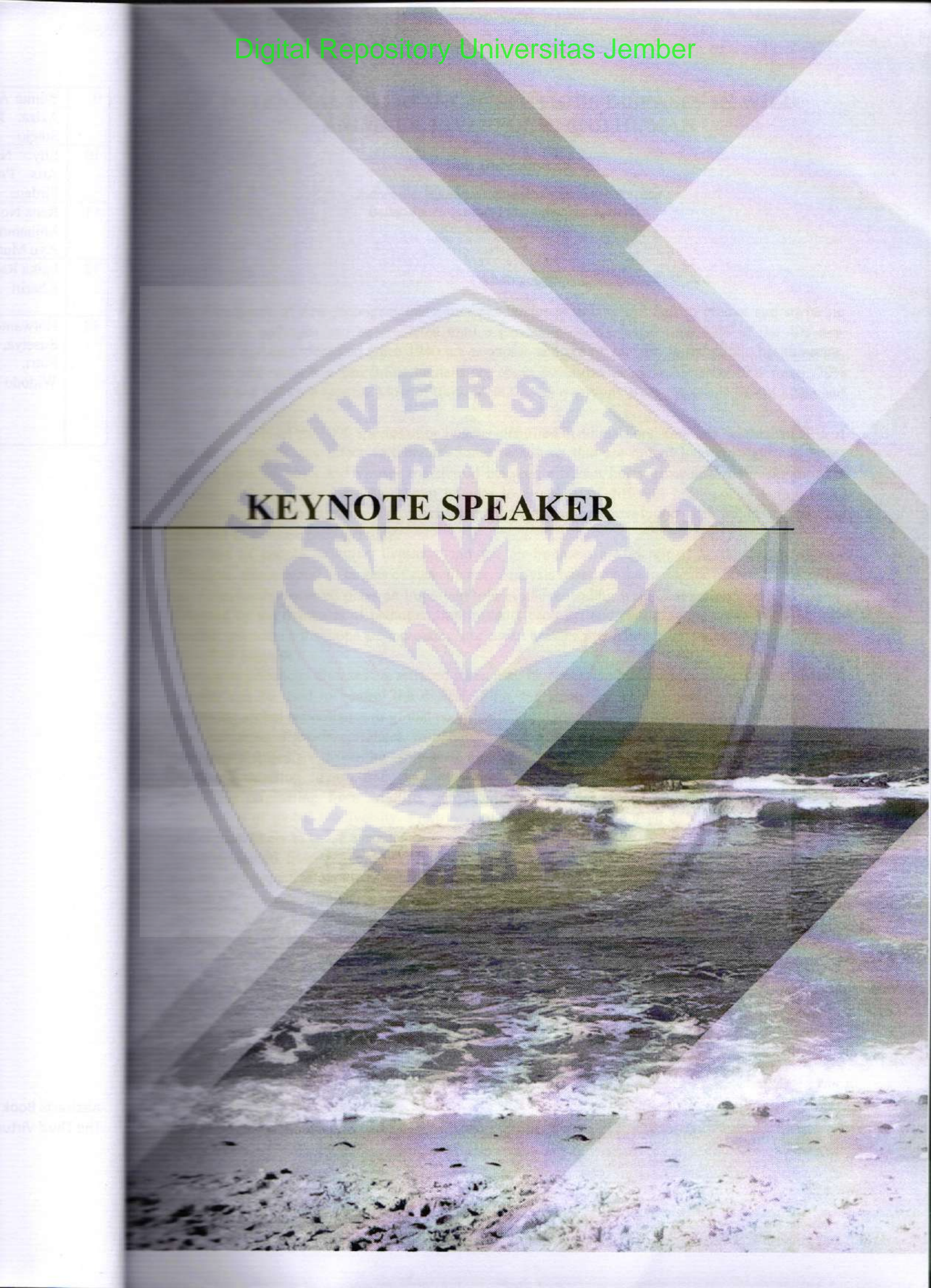




9	Yunita Armiyanti, Anzil Aziza, Ika Rahmawati Sutejo	University of Jember	In Vitro Ovicidal Activity of Combination Illicium Verum Extract And Coconut Oil Against <i>Pediculus humanus capitis</i>
10	Elly Nurus Sakinah, Aris Prasetyo, Jauhar Firdaus	University of Jember	Analysis of Short Chain Fatty Acid (SCFA) After Consumption of Young Coconut in Healthy Humans
11	Rena Normasari, Muhammad Iqbal Fauzi, Ayu Munawaroh Aziz	University of Jember	Extract of <i>Tamarindus indica</i> Seed Effect on Testicular Damage in Aluminium Chloride (AlCl <sub>3</sub> ) Induced Rat
12	Faika Rachmawati, Khariri	Jember Pharmacy Academy	The Approach of One Health Concept In Addressing The Spread of Zoonotic Diseases In Indonesia
13	Harwanto, Heru Susetya, Khrisdiana Putri, Elfa Zuraida, Widodo Pujiatmoko <sup>4</sup>	Universitas Gadjah Mada	The Protectiveness of Dogs and Cats Post Rabies Vaccination in Banjarbaru, Indonesia







**KEYNOTE SPEAKER**

---



## PESTICIDE EXPOSURE AND CONGENITAL ANOMALY

Supangat

Research Center University of Jember East Java Indonesia ; Jl Kalimantan I/37 Tegal Boto Jember east  
Java Indonesia +62337877  
[drsupangat@unej.ac.id](mailto:drsupangat@unej.ac.id)

### Abstract

A congenital anomaly is one of the leading causes of new infant dead with elucidating the pathophysiology still in progress. One of the interesting is the parent pesticide exposure, whether mother or father, is related to the increased infant mortality rate. There are four putative mechanisms; Endocrine Disruption, Neurodevelopmental toxicity, immune toxicity, and epigenetic.

The correlation between Pesticide exposure and musculoskeletal defect ( spina bifida, labio-palatoschisis, ventral abdomen defect), urogenital anomaly, cardiovascular and anorectal malformation was ignored.

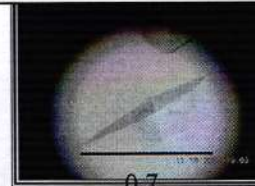
The classic epidemiological research measuring the level of pesticide exposure in farmer workers or family not yet succeed in showing the relationship between congenital anomaly and pesticide exposure since the pesticide in the body is dynamic and follows the metabolism process. The molecular epidemiology, including 3D protein structure, will be an important step for study altered structure and function related to the pathophysiology of congenital anomaly.

**Keywords:** congenital anomaly, molecular epidemiology, pesticide





BACKGROUND



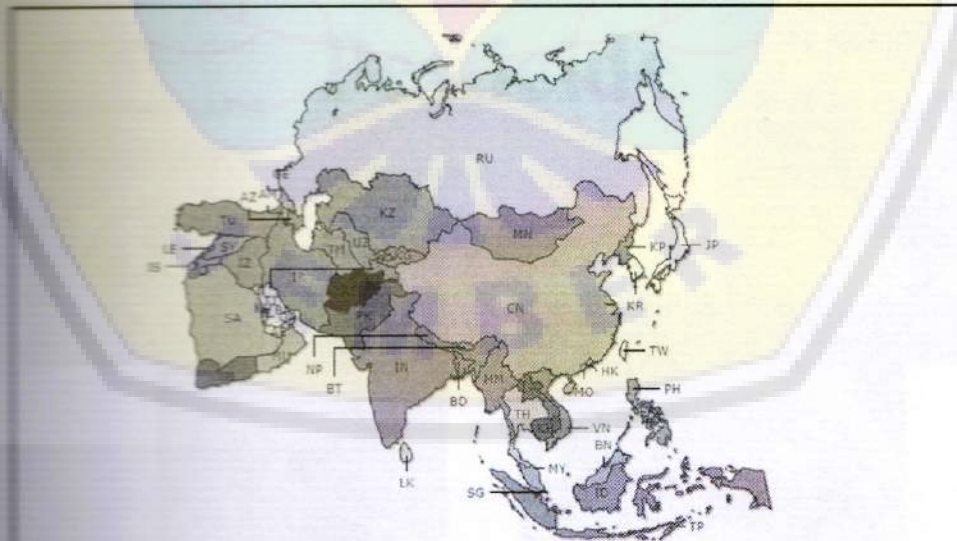
0.7  
m  
m

## Pesticide & Congenital Abnormalities

Supangat, MD M.Sc. , Ph.D, Ped. Surg



1



## Infant Mortality rate

2



## BACKGROUND

**Agro Medicine**

**REDUCING**  
Maternal and Neonatal  
**MORTALITY IN INDONESIA**

Saving Lives,  
Saving the Future

Kalbe Science Awards 2008

3

**DANGAN AMAN**  
AGROSAFE

**TANI SEHAT**  
AGROBUST

**Pesticide**

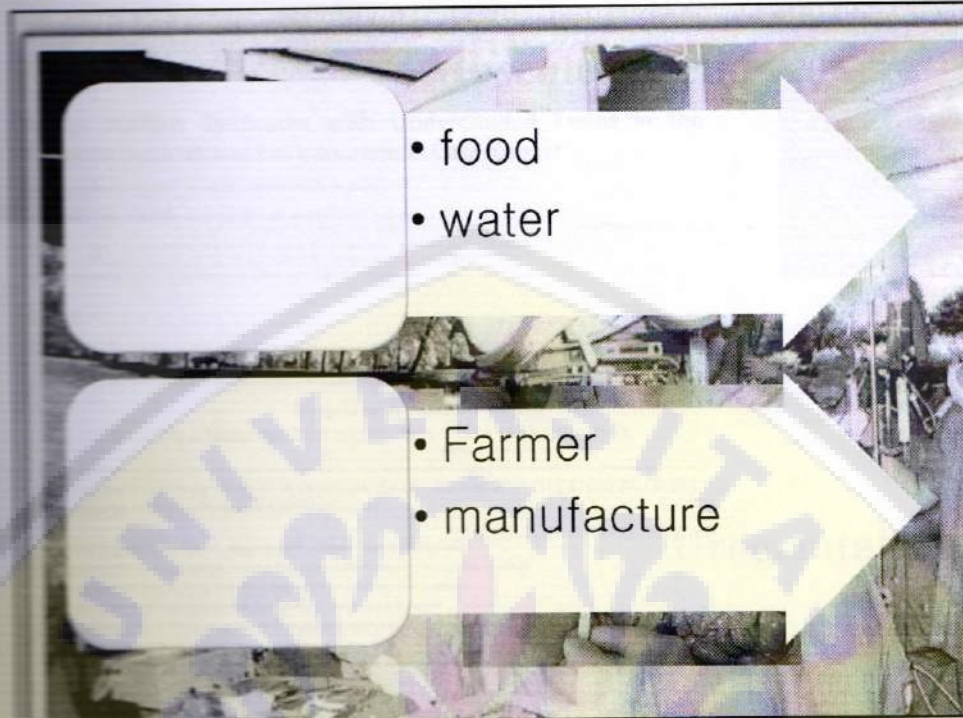
and Health Sciences (eISSN 2636-9346)

Figure 1: The patient's condition when he first arrives in the emergency room Soebandi Hospital. There was an amphi-

hours, Metronidazole 14 mg/8 hours, Paracetamol 25 mg/8 hours, monitoring fluid and electrolytes) and

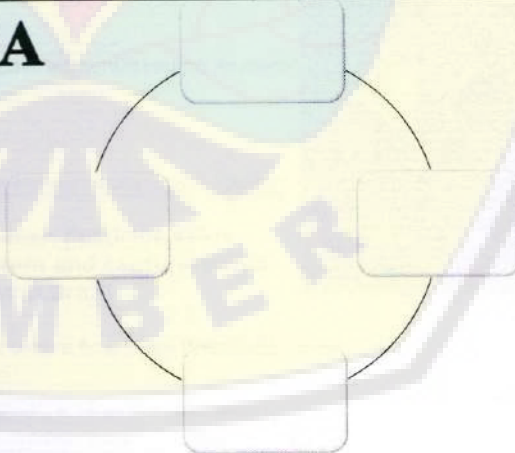
4





5

**Pesticide-->CA**



6



CASE REPORT

**Musculoskeletal**

**Lower Midline Syndrome with Undescended Testes in the Tobacco Agricultural Environment: A Case Report**

Henggar Allest Pratama<sup>1</sup>, Lukman Oktadianto<sup>2</sup>, Supangat<sup>3,4,5</sup>

- <sup>1</sup> Emergency Department, Dr. Soebandi Hospital, Jember 68111, Indonesia
- <sup>2</sup> Department of Pediatric, Dr. Soebandi Hospital, 68111 Jember, Indonesia
- <sup>3</sup> Pharmacology Department, Faculty of Medicine, Jember University, Jember 68121, Indonesia
- <sup>4</sup> Molecular Biology Research Center, Jember University, Jember 68121, Indonesia
- <sup>5</sup> Department of Surgery, Dr. Soebandi Hospital, 68111 Jember, Indonesia



ABSTRACT

Lower midline syndrome is a rare congenital anomaly associated with omphalocele. Undescended testes is a con-

*NurseLine Journal*

Vol. 3 No. 2 Nopember 2018 p-ISSN 2540-7937 e-ISSN 2541-464X

**THE ASSOCIATION BETWEEN HYPOSPADIAS OCCURRENCE WITH EXPOSURE OF PESTICIDES IN AGROINDUSTRY ENVIROMENT**

Sri Weli Teguh Pujo Sakti<sup>1</sup>, Supangat<sup>2\*</sup>, Septa Surya Wahyudi<sup>3</sup>

<sup>1,2,3</sup>Program Studi Pendidikan Dokter Fakultas Kedokteran Universitas Jember

Laboratorium Farmakologi Fakultas Kedokteran Universitas Jember

Laboratorium Anatomi Fakultas Kedokteran Universitas Jember

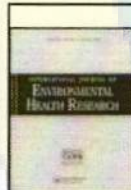
Jl. Kalimantan No 37 Kampus Bumi Tega Boto Jember 68121. 0331-324446, 337877, Fax : 0331-337877.

\*e-mail: supangat@unej.ac.id

**Urogenital**

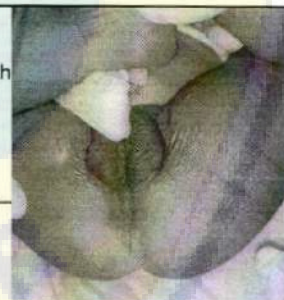
ABSTRACT

7



International Journal of Environmental Health Research

ISSN: 0960-3123 (Print) 1369-1619 (Online) Journal homepage: <http://www.tandfonline.com/loi/gje20>



**Positive correlation between pesticide sales and central nervous system and cardiovascular congenital abnormalities in Brazil**

Carmen I. R. Froes Asmus, Volney M. Camara, Ronir Raggio, Philip J. Landrigan & Luz Claudio

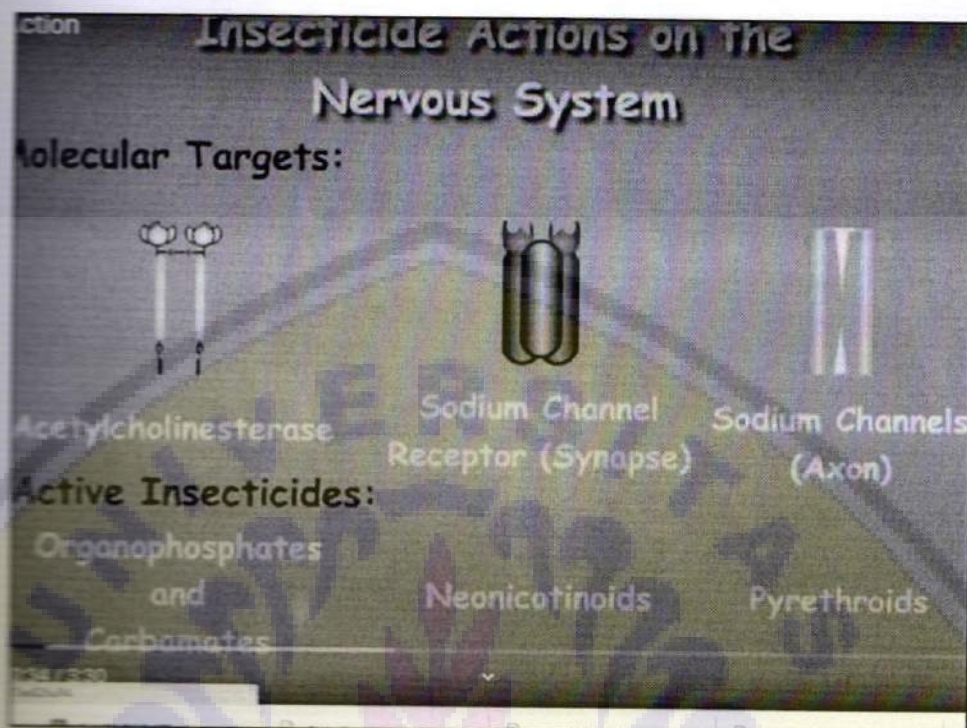
To cite this article: Carmen I. R. Froes Asmus, Volney M. Camara, Ronir Raggio, Philip J.

**CNS: Spina Bifida**

**Cardiovascular: VACTRELL**

8





ScienceDirect  
Journal homepage: [www.elsevier.com/locate/biochempharm](http://www.elsevier.com/locate/biochempharm)

#### Crystal structures of acetylcholinesterase in complex with HE-6, Ortho-7 and obidoxime: Structural basis for differences in the ability to reactivate tabun conjugates<sup>☆,☆☆</sup>

Frederik Ekström<sup>†,\*</sup>, Yuan-Ping Pang<sup>‡</sup>, Malin Boman<sup>§</sup>, Elisabet Artursson<sup>§</sup>, Christine Aléfur<sup>§</sup>, Susanne Börjegen<sup>§</sup>

<sup>†</sup>Swedish Defence Research Agency, Division of NBC Defense, S-901 82, Umeå, Sweden  
<sup>‡</sup>Computer-Aided Molecular Design Laboratory, Mayo Clinic College of Medicine, 200 First Street SW, Rochester, MN, 55905, USA

**ARTICLE INFO**      **ABSTRACT**

**Article history:**  
Received 27 August 2009  
Received in revised form 10 November 2009  
Accepted 10 November 2009

**Abstract:**  
Inhibition of acetylcholinesterase (AChE) by organophosphorus compounds (OPs) such as pesticides and nerve agents causes acute toxicity or death of the intoxicated individual. The inhibited AChE may be reactivated by certain oximes as antidotes for physical treatment of



Architecture of the  $\alpha 4\beta 2$  nicotinic receptor







13

**Table 1.1** Classification of major pesticides according to the target organism

Pesticide type	Target
Insecticide	Insects
Fungicide	Fungi
Herbicide	Plants
Molluscicide	Slugs, snails
Rodenticide	Rodents
Acaricide	Mites
Nematocide	Nematode worms

14



**Table 1.2** Examples of classification of pesticides according to chemical structure

---

Organophosphates
phosphates
phosphonates
phosphinates
phosphorothioates
phosphorodithioates
phosphoramides
phosphorothioamidates
Carbamates
N-methylcarbamates
dithiocarbamates
benzimidazoles
Organochlorines
Pyrethrum; synthetic pyrethroids
Phenols
Morpholines
Chloroalkylthiols
Organometallics
Azoles
Bipyridilium compounds
Ureas/thioureas
Anilines (substituted)
Chloronitrile

---

15

**Table 1.3** Pesticide classification according to mode of action

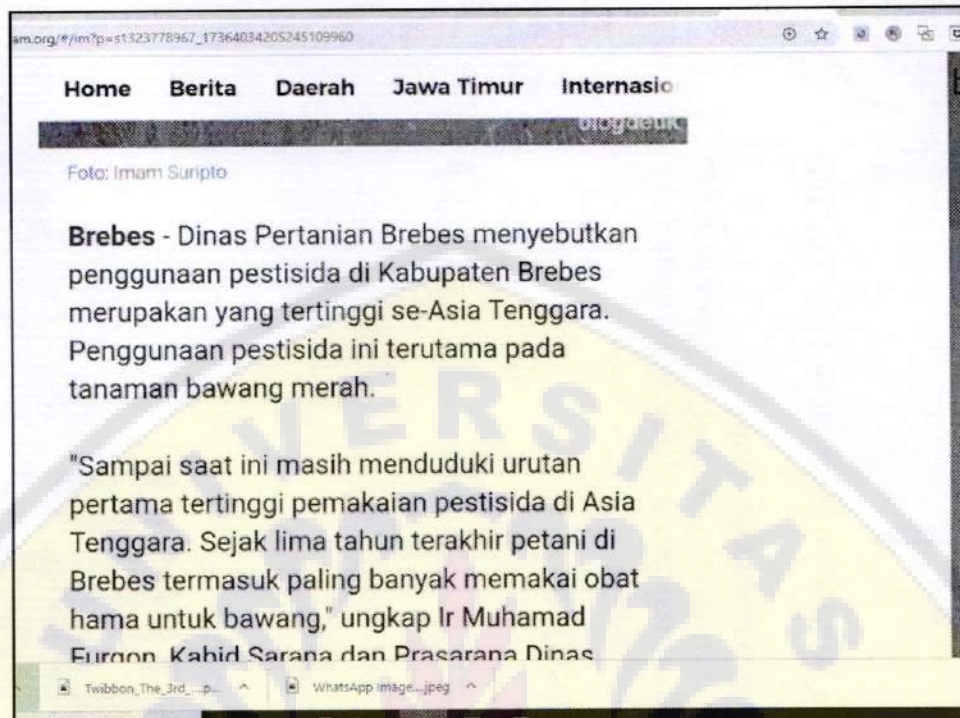
---

Anticholinesterase (cholinesterase inhibitor)
Chitin synthesis inhibitor
Ecdysone agonist
GABA blocker ( $\gamma$ -amino butyric acid inhibitor)
Juvenile hormone analogues (insect growth regulators)
Anticoagulant
Glutamine synthetase inhibitor
Steroid demethylation (ergosterol biosynthesis) inhibitor
Protoporphyrinogen oxidase inhibitor
RNA-polymerase inhibitor
Thiol reactant
Protein synthesis inhibitor
Photosynthetic electron transport inhibitor
Mitochondrial respiration inhibitor

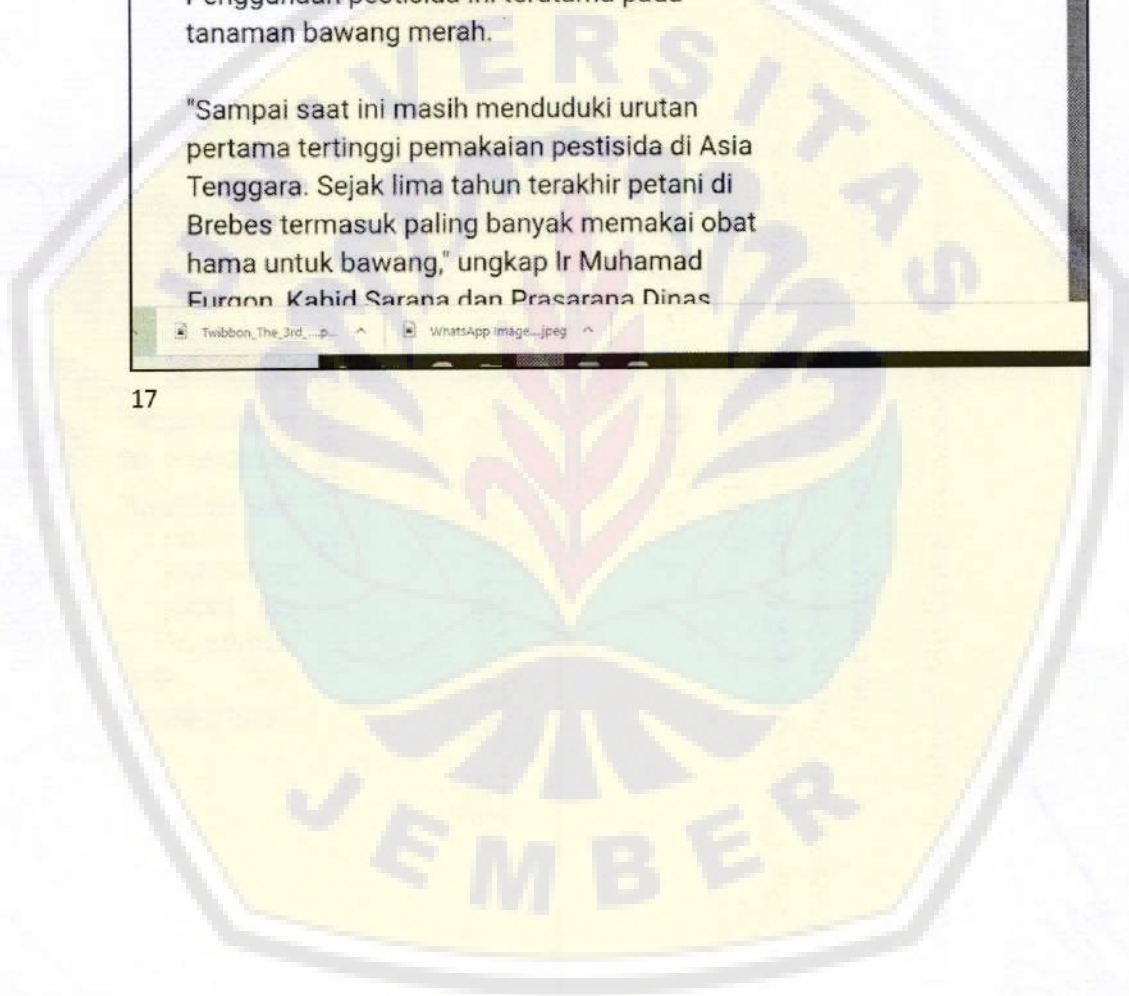
---

16





17







NO. 2119 / UN 25.11 / LL / 2020

# Certificate

of Appreciation

is proudly presented to

dr. Supangat M.Kes Ph.D SpBA

As

Invited Speaker

in Virtual Conference

The 3<sup>rd</sup> International Conference on Agromedicine & Tropical Diseases :  
*Integrated Approaches on Prevention, Curative and Control of Zoonotic  
and Emerging Diseases in Agromedicine Field*

Hosted by Faculty of Medicine, University of Jember on September 12<sup>th</sup> - 13<sup>th</sup> 2020



dr. Supangat, M.Kes, Ph.D., Sp.BA  
Dean of Faculty of Medicine, University of Jember

Dr. rer.biol.hum. dr. Erma Sulistyaningsih, M.Si  
Chairman of ICATD Committee