



**INTERNATIONAL JOURNAL OF
AGRICULTURE AND BIOLOGY**

PAKISTAN

Editorial Board

Name & Designation	Address	Contact
Patron Vice Chancellor	University of Agriculture, Faisalabad, Pakistan	-
Editor-in-Chief Dr. Muhammad Farooq	Sultan Qaboos University, Al-Khoud 123, Muscat, Oman	chiefeditor.ijab@gmail.com
Editors: Dr. Sohail Ahmad	University of Agriculture, Faisalabad, Pakistan	-
Irfan Afzal	University of Agriculture, Faisalabad.	-
Muhammad Binyameen	Bahauddin Zakariya University, Multan, Pakistan	-
E. Eydurán	Iğdır University, Iğdır, Turkey	-
Shahzad M.A. Basra	University of Agriculture, Faisalabad.	-
Zafar Iqbal	University of Agriculture, Faisalabad.	-
A. Khaliq	University of Agriculture, Faisalabad.	-
Ahrar Khan	University of Agriculture, Faisalabad.	-
M. Aslam Khan	University of Agriculture, Faisalabad.	-
N. Kumar	University of Florida, Immokalee, Florida, USA	-
S.R. Sajjala	Alabama A&M University, Normal, Alabama, USA	-
M. Sarwar	Gomal University DI Khan	-
T. Sato	Tohoku University, Japan	-
Z. Singh	Curtin University of Technology, Perth, Australia	-
H. Ulukan	University of Ankara, Turkey	-
A. Wahid	University of Agriculture, Faisalabad.	-
W. Xi	Texas A&M University, College Station, Texas, USA	-
C. Xu	Rutgers University, New Brunswick, New Jersey, USA	-
Xiangbing Yang	Subtropical Pest Management Laboratory Texas A&M AgriLife Research & Extension Center, TX USA	-
J. Yao	Baylor College of Medicine, Houston, Texas, USA	-
Nabeel Khan Niazi	University of Agriculture, Faisalabad	-
Ahmad Sattar Khan	University of Agriculture, Faisalabad.	-
Shahbaz Talab Sahi	University of Agriculture, Faisalabad.	-
Hafeez ur Rehman	University of Agriculture, Faisalabad.	-
Dr. Abd El-Latif Hesham	Genetics Department, Assiut University, Assiut 71526, Egypt.	-

Digital Repository Universitas Jember

Dr. Ghulam Murtaza	Institute of Soil and Environmental Sciences, University of Agriculture, Faisalabad	-
Dr. Muhammad Sana Ullah	Institute of Soil and Environmental Sciences, University of Agriculture, Faisalabad	-
Dr. Mubshar Hussain	Bahauddin Zakariya University Multan, Pakistan	-
Advisory Board A.R.M. Al-Tawaha	McGill University, Montreal, Canada	-
A.H. Gilani	The Aga Khan University, Karachi, Pakistan	-
N. Iqbal	Basking Ridge, New Jersey, USA	-
Y. Kara	Pamukkale University, Denizli, Turkey	-
M.N. Khan	University of Agriculture, Faisalabad, Pakistan	-
A.U. Malik	University of Agriculture, Faisalabad, Pakistan	-
M.M.F. Mansour	Ain Shams University, Cairo, Egypt	-
D.N. Mbewe	University of Zambia, Lusaka, Zambia	-
G. Muhammad	University of Agriculture, Faisalabad, Pakistan	-
A. Nasim	COMSTECH Secretariat, Islamabad-44000, Pakistan	-
M. Qadir	Assistant Director, Water and Human Development United Nations University – Institute for Water, Environment and Health (UNU-INWEH) 204 - 175 Longwood Road South Hamilton, Ontario, L8P 0A1, Canada	-
H.A. Sayyed	Imperial College London	-
Business Office Mr. Shahzeb	University of Agriculture, Faisalabad	basrashahzeb@gmail.com
Ghazanfar Ali	University of Agriculture, Faisalabad	editorijab@fspublishers.org; editorijab@yahoo.com

Daftar Judul Artikel dan Nama Penulis

No	Title and DOI	Authors Name
1	CRISPR/dCas9-mediated Inhibition of Replication of Begomoviruses DOI: 10.17957/IJAB/15.0948	Zulqurnain Khan, Sultan Habibullah Khan, Aftab Ahmad, Sabin Aslam, Muhammad Salman Mubarik and Sehrish Khan
2	Induction of Half-Sib Embryonic Callus and Production of Taxiod Compounds Therefrom in Taxus chinensis var. Mairei DOI: 10.17957/IJAB/15.0949	Yanlin Li, Qing Yang, Xiaoying Yu, Li Wang, Wanxing Wang and Xingyao Xiong
3	Stand Characteristics and Soil Properties in Japanese Red Pine (Pinus densiflora) Pure Forests with Different Disease Severity Index in Kunyushan Mountains Region, China DOI: 10.17957/IJAB/15.0950	Ruirui Hu, Jun Liang, Xian Xie, Yingjun Zhang and Xingyao Zhang
4	NaCl Stress Changed the Ion Homeostasis through Different K⁺ Uptake Ways in Salt-Sensitive/Tolerant Wheat (Triticum aestivum) Varieties DOI: 10.17957/IJAB/15.0951	Huaning Zhang, Zihui Liu, Yanmin Zhang, Ruijuan Yang, Xiulin Guo and Guiyan Wang
5	Characteristics and Bioactivity of a Chlorogenic Acid-producing Endophytic Bacterium Isolated from Lonicera japonicae DOI: 10.17957/IJAB/15.0952	Chuan Wang, Yanglu Liu, Su Feng and Zhirong Yang
6	Structural Characterization of a Directed Self-assembly Recombinant Quasi-spider Silk Protein Expressed in Escherichia coli DOI: 10.17957/IJAB/15.0953	Bin Liu, Tao Wang, Liyan Xiao, Yun Li, Min Zhu, Wanqi Lan, Wensun Zhong and Qiang Fu
7	Optimization of Enhanced Fermentation of Low-salt Sufu Paste from Soybean and Evaluation of its Phenolic Acids DOI: 10.17957/IJAB/15.0954	Chunzhi Xie, Haiying Zeng and Likang Qin
8	Plastic Film and Straw Mulch Effects on Maize Yield and Water Use Efficiency under Different Irrigation Levels in Punjab, Pakistan DOI: 10.17957/IJAB/15.0955	Atif Javed, Muhammad Iqbal, Muhammad Farooq, Rattan Lal and Ruqia Shehzadi
9	Metabolomic and Proteomic Analysis of Moringa oleifera L. Cultivated with Vermicompost and Phosphate Rock under Water Stress Conditions DOI: 10.17957/IJAB/15.0957	Jorge Martin Guzman-Albores, Martha Leticia Ramirez -Merchant, Erika Citlaly Interiano-Santos1, Luis Alberto Manzano-Gomez, Jose Humberto Castanon-Gonzalez, Robert Winkler, Miguel Abud-Archila, Joaquin Adolfo Montes-Molina, Federico Antonio Gutierrez-Miceli

		and Victor Manuel Ruiz-Valdiviezo
10	Genetic Characterization of <i>Rheum ribes</i> L. (Wild Rhubarb) Genotypes in Lake Van Basin of Turkey through ISSR and SSR Markers DOI: 10.17957/IJAB/15.0958	Aytekın Ekinci, Cenk Erdinc, Sibel Turan, Ozlem Cakmakci, Muhammad Azhar Nadeem, Faheem Shehzad Baloch and Suat Sensoy
11	Comparison of Self- and Cross-pollination in Pollen Tube Growth, Early Ovule Development and Fruit Set of <i>Camellia grijsii</i> DOI: 10.17957/IJAB/15.0960	Huan Xiong, Feng Zou, Deyi Yuan, Xiaofeng Tan, Jun Yuan, Ting Liao and Genhua Niu
12	Genome-Wide Association Analysis for the Genetic Basis of Seven Traits Associated with Corn Grain Moisture and Ear Threshing Rate DOI: 10.17957/IJAB/15.0961	Xinqi Wang, Xiaoci Ren, Nan Mei, Yanning Xie, Xiangyu Yang, Xiaojie Wang and Rengui Zhao
13	Effect of Endophytic Fungal Elicitors on Essential Oil Accumulation in Cell Suspension Cultures of <i>Cinnamomum longepaniculatum</i> DOI: 10.17957/IJAB/15.0963	Kuan Yan, Qin Wei, Ruizhang Feng and Wanhai Zhou
14	The Effects of Substrate Grain Size and Mud-sand Ratio on the Burrowing Ability of <i>Urechis unicinctus</i> Juveniles DOI: 10.17957/IJAB/15.0965	Feng Liu, Tao Sun, Yuan Ji, Zheng Ma, Yancui Zhao, Hairui Yu and Chune Liu
15	Morpho-Anatomical Characterization and Phylogenetic Analysis of Five <i>Tomentella</i> Ectomycorrhizae from Leigong Mountain, Guizhou DOI: 10.17957/IJAB/15.0966	Wenquan Zhang and Qingzhi Yao
16	Illumina Sequencing Analysis of the Microbial Community in the Gastrointestinal Tract of Chinese Mitten Crab (<i>Eriocheir sinensis</i>) DOI: 10.17957/IJAB/15.0967	Yanfeng Zhou, Yanfen Cheng, Bei Jin and Yang You
17	Ameliorating the Effect of Drought Stress through Integrated Application of ACC-deaminase Containing Plant Growth Promoting Rhizobacteria and Biogas Slurry to Improve the Growth and Productivity of Wheat Crop DOI: 10.17957/IJAB/15.0969	Rizwan Yaseen, Muhammad Zafar-ul-Hye and Mubshar Hussain
18	Response of Soil Microbial Biomass and Enzymatic Activity in Municipal Solid Waste Compost Treated Soil DOI: 10.17957/IJAB/15.0970	Ahmad Waqas, Ghulam Murtaza, Muhammad Naveed and Shahzad M.A. Basra
19	Methods of <i>Dendrobium</i> Rust Detection and Analysis on the Genetic Structure of <i>Dendrobium</i> Rust Populations DOI: 10.17957/IJAB/15.0971	Pu Shixian, Yu Hang, Li Guilin, Yang Jing, Li Zesheng, Bai Yanbing, Zhang Cui, Wang Na, Li Chengyun and Liu Lin
20	Allelic Variations and Agronomic Comparisons of Durum Wheat Cultivars under East-Mediterranean Conditions	Huseyin Güngör

	DOI: 10.17957/IJAB/15.0972	
21	Comparative Evaluation of Biological Activities of Native and Nanosuspension of Terminalia arjuna DOI: 10.17957/IJAB/15.0956	Fatiqa Zafar, Nazish Jahan, Khalil-Ur-Rahman, Muhammad Rafique Asi3 and Shaukat Ali
22	Influence of Seed Priming and Sowing Methods on Growth and Productivity of Wheat Cultivars Differing in Seed Size in Rice-Wheat Cropping system of Punjab, Pakistan DOI: 10.17957/IJAB/15.0959	Wardah Muzaffar, Riaz Ahmad, Muzzammil Hussain, Muhammad Farooq and Abdul Wakeel
23	Static Magnetic Field Treatments Affect the Light-induced Germination of Dormant Paulownia elongata Seed DOI: 10.17957/IJAB/15.0964	Jia Liu, Tingting Xue, Yongbao Shen and Zhen Wang
24	NTDBPlant: Nutrient Transporters Database for Plants DOI: 10.17957/IJAB/15.0968	Farrukh Azeem, Arooj Mumtaz, Khushbakht Aliya, Faiza Maqbool, Tunjeena Rehan, Sumaira Rasul and Muhammad Amjad Ali
25	Comparative Analysis of Transcriptomes from Synthetic CpG ODN/CpG Free DNA Stimulated Bovine PBMCs DOI: 10.17957/IJAB/15.0973	Qing Chen, Weifeng Yuan, Ting Xin, Hong Jia, Chunya Bu, Guangdong Li and Xiaoyu Guo
26	Liquid Culture of Somatic Embryogenesis Cell Proliferation of Sugarcane (Saccharum officinarum) DOI: 10.17957/IJAB/15.0974	Firdha Narulita Alfian, Nur Nafisatul Afdhoria, Parawita Dewanti, Didik Pudji Restanto and Bambang Sugiharto
27	Research Advances on Cuticular Waxes Biosynthesis in Crops: A Review DOI: 10.17957/IJAB/15.0975	Md Shaheenuzamn, Tianxiang Liu, Shandang Shi, Hongqi Wu and Zhonghua Wang
28	Evaluating the Impact of Thermal Variations Due to Different Sowing Dates on Yield and Quality of Spring Maize under Semi-arid Environment DOI: 10.17957/IJAB/15.0976	Mubashra Yasin, Ashfaq Ahmad, Tasneem Khaliq and Shahzad Maqsood Ahmad Basra
29	Biochar Amendment with Irrigation Water-regimes at Tillering and Booting Stages Enhanced Physiological and Antioxidant Behaviour for Wheat Productivity DOI: 10.17957/IJAB/15.0978	Hamid Nawaz, Nazim Hussain, Muhammad Akbar Anjum, Haseeb-ur-Rehman, Moazzam Jamil, Muhammad Aown Sammar Raza and Omer Farooq
30	Ethylene is Involved in Red Light-induced Anthocyanin Biosynthesis in Cabbage (Brassica oleracea L.) DOI: 10.17957/IJAB/15.0980	Fenghua Wang, Golam Jalal Ahammed, Guangyuan Li, Pengtao Bai, Yan Jiang, Shaoxian Wang and Shuangchen Chen
31	Mitigation of Drought Stress-induced Adverse Effects on Antioxidant System of Eggplant by Exogenous Application of Alpha-tocopherol	Maham Saddique and Muhammad Shahbaz

	DOI: 10.17957/IJAB/15.0982	
32	Changes in Viability of Lincang Hulled Wheat Seeds under Different Storage Temperatures and Changes in Lipoxygenase (LOX) Gene Activity and Expression Levels During Germination DOI: 10.17957/IJAB/15.0983	Guoyan Zhou, Feifei Zhang, Wenjie Long, Dan Chen, Xiaoyang Wu, Qing Cai and Shaoyun Wu
33	In vitro Micropropagation of Ornamental Rare Species <i>Sibiraea altaiensis</i> (Laxm.) Schneid. – An Endemic of Altai DOI: 10.17957/IJAB/15.0985	Vitaliy Kirillov, Mariya Serafimovich, Tamara Stikhareva and Bolat Mukanov
34	Application of AMMI Model to Assess Spring Maize Genotypes under Multi-environment Trials in Hebei Province DOI: 10.17957/IJAB/15.0962	Meijin Ye, Jianwei Wei, Junzhou Bu, Zenghui Gu, Yanbing Wang, Shuping Chen, Haicheng Peng, Haiwang Yue and Junliang Xie
35	Genetic Mapping of Grain Nutritional Profile in Rice using Basmati Derived Segregating Population Revealed by SSRs DOI: 10.17957/IJAB/15.0977	Javed Iqbal Wattoo, Sara Liaqat, Hira Mubeen, Muhammad Ashfaq, Muhammad Naveed Shahid, Amjad Farooq, Muhammad Sajjad and Muhammad Arif
36	<i>Camellia oleifera</i> Seed Shell: An Effective Substrate for Producing <i>Flammulina velutipes</i> Fruit Bodies with Improved Nutritional Value DOI: 10.17957/IJAB/15.0984	Wei-Rui Zhang, Sheng-Rong Liu, Gui-Ping Su and Li-Yan Ma
37	Response of Wheat Cultivars to Deficit Irrigation under Semiarid Conditions of Faisalabad DOI: 10.17957/IJAB/15.0986	Muhammad Fahad, Syed Aftab Wajid, Ashfaq Ahmad and Muhammad Jehanzeb Masud Cheema
38	Molecular Identification of Stem Rust Resistance Gene(S) from Pakistani Wheat Cultivars DOI: 10.17957/IJAB/15.0987	Shahzad Bashir, Shazia Anwer Bukhari, Irfan Afzal, Ghulam Mustafa and Mahmood-ur-Rahman
39	Validation of Internal Reference Genes for Accurate Gene Expression Analysis in Soybean Roots Interacted with <i>Heterodera glycines</i> and <i>Bacillus megaterium</i> DOI: 10.17957/IJAB/15.0989	Chen Jingsheng, Zhou Yuanyuan, Wang Yuanyuan, Zhu Xiaofeng, Wu Xiaojing, Zhao Jing, Aatika Sikandar, Duan Yuxi and Chen Lijie
40	Growth and Metagenomics Analysis of <i>Ulva prolifera</i> after Antibiotic Treatment DOI: 10.17957/IJAB/15.0990	Ran Chen, Chuner Cai, Ting Jiang, Yan Huang and Peimin He
41	Effects on Expression of Hepatic Phase-1 and Phase-2 Metabolism and Transporter Genes by <i>Swertia mussoitii</i> Extract, A Hepatoprotective Herb from Tibetan Traditional Medicine DOI: 10.17957/IJAB/15.0991	Hongxia Yang, Yuancan Xiao, Cen Li, Tingting Gao, Lixin Wei and Yuzhi Du
42	Forest Biomass Allocation vary with Temperature in Five Forest Types of China DOI: 10.17957/IJAB/15.0992	Wanqi Lin, Yiran Fang and Li Xue

43	Precipitation-driven Changes in Biomass Allocation Pattern for Forests in China DOI: 10.17957/IJAB/15.0993	Min Yu, Wanqi Lin and Li Xue
44	Genetic Variation and Post-Translational Modifications of Cytochrome c Oxidase-1 (COX1) in different Strains of <i>Sordaria fimicola</i> DOI: 10.17957/IJAB/15.0994	Rabia Arif, Syeda Hina Bukhari, Muhammad Ishfaq, Memuna Ghafoor Shahid, Siu Fai Lee and Muhammad Saleem
45	Accumulation and Structural Unit of Wall-linked Phenolics in the Cotton (<i>G. hirsutum</i> L.) Fiber Secondary Wall DOI: 10.17957/IJAB/15.0995	Wen-Ran Hu, Raphael Linker, Ling Fan, Xiao-Yun Zhou, Yang Yang, Bo Li, Xiao-Rong Li and Qin Weng
46	Genetic Diversity of Net Blotch Pathogens of Barley in Turkey DOI: 10.17957/IJAB/15.0998	Arzu Celik Oguz, Fatih Olmez and Aziz Karakaya
47	The Physiological Responses of Safflower (<i>Carthamus tinctorius</i> L.) to Osmotic Stress DOI: 10.17957/IJAB/15.1000	Bo Wei, Jiaxin Yang, Dandan Li, Kai Hou, Feng Pan, Chen Chen and Wei Wu
48	Rootstocks Influence Morphological and Biochemical Changes in Young 'Red Fuji' Apple Plants DOI: 10.17957/IJAB/15.0999	Faisal Hayat, Changpeng Qiu, Xuefeng Xu, Yi Wang, Ting Wu, Xinzhong Zhang, Muhammad Azher Nawaz and Zhenhai Han
49	Purple Nutsedge (<i>Cyperus rotundus</i>) Control through Interference by Summer Crops DOI: 10.17957/IJAB/15.0997	Javaid Iqbal, Antonio Ditommaso, Muhammad Ishaq Asif Rehmani, Khawar Jabran, Safdar Hussain, Wajid Nasim, Shah Fahad, Muhammad Ahmad Shehzad and Anser Ali



Full Length Article

Liquid Culture of Somatic Embryogenesis Cell Proliferation of Sugarcane (*Saccharum officinarum*)

Firdha Narulita Alfian¹, Nur Nafisatul Afdhoria², Parawita Dewanti^{2,3*}, Didik Pudji Restanto^{2,3} and Bambang Sugiharto^{3,4}

¹Master Program of Biotechnology, University of Jember, East Java, Indonesia, 68121

²Department of Agrotechnology, Faculty of Agriculture, University of Jember, East Java, Indonesia, 68121

³Center for Development of Advanced Science and Technology (CDAST), University of Jember, East Java, Indonesia, 68121

⁴Department of Biology, Faculty of Mathematics and Natural Science, University of Jember, East Java, Indonesia, 68121

*For correspondence: parawita@yahoo.co.id; firdha.narulita28@gmail.com

Abstract

Somatic embryogenesis has turned out to be a major breakthrough in sugarcane biotechnology research. The embryogenic cell line is capable of being stored for a long time and it will not undergo a characteristic change. The aim of this study was to obtain such a medium, which may promote an excellent growth of embryogenic callus of sugarcane. Embryogenic cell was able to proliferate in a liquid medium of MS containing 2,4-D, L-proline and casein hydrolisate with the addition of arginine. However, the lack of 2,4-D as an auxin in medium causing cell death in the culture. This study showed that 2,4-D as an auxin in proliferation medium has an important role to proliferate embryogenic cell in a liquid medium and the resultant embryogenic cell did not lose its capability to regenerate as a new whole plant. © 2019 Friends Science Publishers

Keywords: Sugarcane; Somatic embryogenesis; Somatic embryo; Liquid medium; Proliferation

Introduction

Sugarcane (*Saccharum officinarum* L.) is one of the commercial crops in Indonesia. Breeding of Sugarcane is not easy owing to its high level of heterozygosity, complex cytogenetics and the sterility of its male and female parts. Propagating sugarcane vegetatively using stem cutting is easier and more popular to do. However, it has a high range of microbes which favor systemic disease transmission even if it is subjected to chemical therapy or heating before planting (Maretzki *et al.*, 1969; Jabeen *et al.*, 2009; Arjun and Rao, 2015). Nowadays, the most effective way to propagate sugarcane is tissue culture (Dewanti *et al.*, 2015; Wekesa *et al.*, 2015). The development of somatic embryogenesis is a major breakthrough in biotechnology research on sugarcane.

Somatic embryogenesis is a biotechnological approach mainly used for the clonal propagation of different plants worldwide (Heringer *et al.*, 2018). It is the process of developing somatic cells into new plants by forming an embryo without fertilization (Kaur and Kapoor, 2015). Somatic embryogenesis is subdivided into indirect and direct based on the process involved. The difference between them is that there is a callus phase in indirect somatic embryogenesis and no callus phase in direct somatic embryogenesis. Only a few somatic embryos could be formed via the direct process of somatic embryogenesis whereas in indirect somatic embryogenesis there is a high

yield of somatic embryos (Williams and Maheswaran, 1986; Percy *et al.*, 2000; Suprasanna *et al.*, 2005). Development of somatic embryogenesis involves two big steps: The somatic cells differentiate and become embryogenic competent cells, then proliferate as embryogenic cells, and those embryogenic cells show an embryogenic capability and become differentiated to form somatic embryos (Jimenez, 2011).

Efficient and reliable plant regeneration can be obtained from embryogenic tissue culture in most species of Poaceae such as sugarcane. The fact that when embryogenic cell lines are stored for long periods of time there is no genetic change that may make them reliable totipotent cells not only for genetic transformation but also for efficient germplasm conservation. Agar, being a gelling agent for solid tissue culture media, is a general way to activate sugarcane embryogenic cell. The solid media have proven to give a great result in embryogenic cells which could be regenerated more easily. But compared with solid media, liquid media are more suitable and adaptable for reducing cost and labor (Suarez, 2013). Currently, a liquid culture of callus derived from somatic embryogenesis has a great potential for propagation at a rapid rate (Thorat *et al.*, 2017). But establishing and maintaining embryogenic cell liquid culture have however, proven to be a Herculean task. This research describes a definite medium, which promotes an excellent growth of embryogenic callus from sugarcane.

Materials and Methods

Plant Material and Preparations

Experiments were performed in Molecular Biology and Biotechnology Division, Center of Development and Advanced Science and Technology (CDAST), University of Jember, East Java, Indonesia during January–October of the years 2017. A spindle leaf isolated from 6 months old commercial sugarcane var. NXI 1-3 was chosen as plant material for inducing embryogenic callus. This plant material was cultivated in the trial field of the University of Jember in Jubung, Jember, East Java. Explants were sterilized using 96% alcohol and sliced in the transverse section for about 2 mm in thickness and 5 mm in diameter width aseptically in the laminar air flow from Biobase.

Induction of Embryogenic Callus

The transverse section of spindle leaf was cultured on MS media based on previous experiment (Alfian, 2015) containing 3 mg/L 2,4-D + 300 mg/L casein hydrolysisate + 30 g/L sucrose + 12 g/L agar, which has been optimized for embryogenic callus induction in accordance with prior experiment. The pH was adjusted to 6.2 prior to autoclave at 121°C and 103 kPa for 15 min. Microscopic observation was carried out using Leica EZ4HD stereo microscope to achieve a better morphological analysis. This culture was put in a totally dark condition for 6 weeks with 3 weeks interval subculture to activate spindle leaf to produce embryogenic callus. The percentage success of embryogenic callus induction (ECI) was measured with the equation (Tahir *et al.*, 2011):

$$\text{ECI} = \frac{\text{Number of callus induced}}{\text{Number of total explant inoculated}} \times 100\%$$

Initiation of Somatic Embryo from Embryogenic Callus

Embryogenic callus from induction media was moved into a new media in order to induce the somatic embryo stage using MS media containing 1 mg/L 2,4-D + 300 mg/L casein hydrolysisate + 560 mg/L L-proline + 30 g/L sucrose + 12 g/L agar. The pH was adjusted to 6.2 prior to autoclaving at 121°C and 103 kPa for 15 min. This culture was on for 3 weeks under dark condition. Development stage of somatic embryo maturation was observed every week with a stereo microscope from Leica EZ4HD. The formation of globular, scutellar and coleoptile structure is the first stage of specific characterization of embryogenic callus development.

Proliferation of Somatic Embryo in Liquid Medium and Regeneration

The somatic embryo has three major developmental stages in monocots such as sugarcane. These are globular, scutellar, as well as coleoptile stage. However, only the scutellar structure could continue proliferating in a liquid

medium. We put the selected friable embryogenic callus, which reached the somatic embryo stage of scutellar in a liquid proliferation medium. The homogeneity of the liquid cell culture was maintained to obtain the fine cell culture. Cell culture was produced from 9 week-old embryogenic callus (0.25 g fresh weight) in Erlenmeyer flask, which contained liquid MS medium (25 mL) supplemented with varying combination. The pH was adjusted to 6.2 prior to autoclaving. The flask was put on a rotary shaker at a regular speed of 100 rpm, in the dark at 27±28°C. After 7 days, the medium was replaced with a fresh medium and maintained on a rotary shaker at 80 rpm for the next eight weeks. The cell culture was sub-cultured every 7 days which precipitated the cell from the medium and the medium was poured into a new vessel, and replaced with a new fresh medium from the old vessel with the same volume (Mustafa *et al.*, 2011). Several combinations of media were used to discover the best combination to produce either embryogenic callus or fine cell culture (Table 1). The aggregates from nine week-old liquid medium proliferation were filtered with sterile filter paper in order to separate the liquid medium and the aggregates. The aggregates were dried inside Laminar Air Flow (LAF) cabinet and planted again in solid MS media fortified with 1 mg/L 2,4-D + 560 mg/L L-proline + 500 mg/L casein hydrolysisate + 50 mg/L L-arginine + 30 g/L sucrose + 11 g/L agar for three weeks. The shoot was transferred to MS medium which contain 100 mg/L L-glutamine + 30 g/L Sucrose + 11 g/L agar to perform shoot regeneration for four weeks. Plantlets were acclimatized to sterile sand medium for 2 weeks in growth chamber before transferring into the soil in the pots.

Results

Somatic Embryo Development

Embryogenic callus: Embryogenic callus was activated in embryogenic callus induction media for six weeks. The percentage of successfully induced embryogenic callus is shown in Fig. 1. The spindle leaf of sugarcane began to swell after one week of culture and 6% of total explants inoculated started to form pre-embryo mass stage of embryogenic callus. Over 50% of embryogenic callus was formed in three weeks after inoculation and reached 92% at the end of activation time. The morphology of embryogenic callus and non-embryogenic callus is shown in Fig. 2. The microscopic observation showed that callus formed on the surface or the cut end of sugarcane spindle leaf. Callus began to induced at three weeks of culture and become more pronounced at six weeks of culture. Three week-old has been indicated as embryogenic callus characterization with a clear surface, yellow to translucent in color and a friable structure as shown in Fig. 2a. At this time, some part of spindle leaf still failed to develop into a callus. Embryogenic callus had a rapid growth and development until six weeks old after culture. Some part of callus developed into the globular

Table 1: Medium combination for Liquid Media Proliferation

Combination	Concentration		
	I	II	III
MS (from Phytotech Lab)	4.43 g/L	4.43 g/L	4.43 g/L
L-Proline	560 mg/L	560 mg/L	560 mg/L
Casein Hidrolysate	500 mg/L	500 mg/L	500 mg/L
2,4-D	-	1 mg/L	1 mg/L
L-Arginine	-	-	50 mg/L

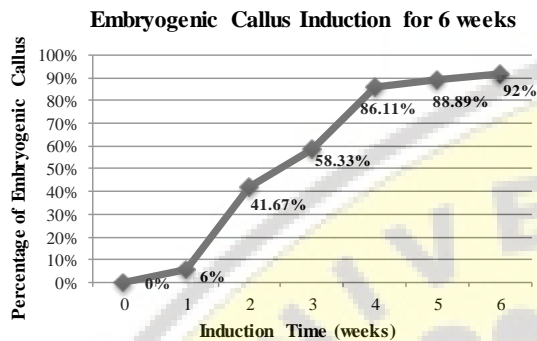


Fig. 1: Percentage of Embryogenic Callus that formed for 6 weeks in total induction time

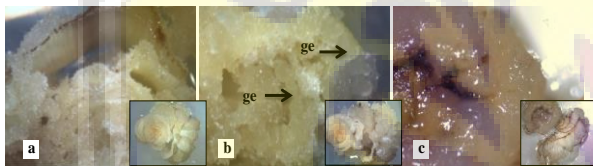


Fig. 2: Morphology of Embryogenic and Non Embryogenic Callus. a) Callus formed in the surface cut end of sugarcane spindle leaf in 3 weeks culture. b) Callus formed in the surface cut end of sugarcane spindle leaf in 6 weeks culture (some globular structure has been formed, showed in arrow). c) Non embryogenic callus. (ge: globular embryo)

structure indicated with an arrow in Fig. 2b. Six weeks old embryogenic callus was massive in size of callus which was formed from spindle leaf. Non-embryogenic callus also appeared in this experiment and was characterized by the watery structure of callus, brown to dark in color and is not capable of developing into a somatic embryo as shown in Fig. 2c.

Somatic embryo development: The embryogenic callus chosen for the next stage was pre-embryo mass structure (Fig. 3a). Pre-embryo mass structure was the first stage of somatic embryo formation which had a transparent, glossy, and friable structure. After two weeks, pre-embryo mass was grown in the new culture medium, and the structure developed into a globular structure that was more compact than pre-embryo mass (Fig. 3c). Globular structure sprang up from the surface part of callus. It allowed observation to be done visually because it was easier to observe the structure. Somatic embryo grew rapidly until three weeks after being transferred to the new culture medium, that contained a lower level of auxin and a scutellar structure was clearly

observed (Fig. 3e). This scutellar structure, that was more adaptable to environmental changes, was used as a material for liquid media proliferation. The histological analysis of pre-embryo mass and globular structure of somatic embryo revealed that embryogenic cells were small, richly cytoplasmic and actively dividing with a big nucleus and conspicuous starch grains. These cells were generally present in small, compact aggregates and indicated competence for embryogenesis (Fig. 3b, d and f). The non-embryogenic cells were large, vacuolated and often elongated with sparse cytoplasm and few starch grains and such cells did not indicate morphogenetic competence (Figueroa *et al.*, 2006).

Proliferation of Somatic Embryo in Liquid Medium and Regeneration

Three different combinations of liquid proliferation medium were investigated to determine the best composition for the development of fine embryogenic cell culture. Main difference of this medium combination was the presence or absence of auxin (2,4-D) and amino acid (L-arginine) in the culture medium. The culture was rotated at 100 rpm in the first week of culture in the liquid medium to release the small aggregates from embryogenic clumps that had reached scutellar stage (Fig. 4a) and maintained to rotate at 80 rpm from the second week until last six weeks observation with five days interval for subculture. First medium gave no response to cell growth in the liquid proliferation medium (Fig. 4b). Depletion of auxin triggered browning of cells in liquid medium, which hindered cells proliferation. The addition of 1 mg/L 2,4-D in the second medium gave a significant result compared with that obtained in the first medium, where the cells proliferated (Fig. 4c). However, the third medium produced the best result among all combination media with the addition of 1 mg/L 2,4-D and 50 mg/L L-arginine (Fig. 4d).

Regeneration was undertaken to prove that proliferated cells through a liquid medium did not lose their embryogenic ability. The cells aggregates proliferated for six weeks in liquid medium and filtered were returned to solid regeneration medium (Fig. 4e). The green spot appeared after three weeks culture in the solid medium (Fig. 4f). It was proven that somatic embryo that has undergone proliferation in liquid media did not lose its capability to regenerate as it developed into coleoptile structure of somatic embryo stage after five weeks culture (Fig. 4g). This coleoptile structure of somatic embryo could grow easily and become a shoot and after being released from callus clumps, the roots also appeared without transfer to rooting medium (Fig. 4h). Shoot grew into a whole plantlet in the culture jar after 8 weeks of culture (Fig. 4i). The plantlet with a strong shoot and long root could be acclimatized in a sterile sand medium. The acclimatization only took place for two weeks in a growth chamber (Fig. 4j). Acclimatized plants with a good condition were moved to the greenhouse (Fig. 4k).

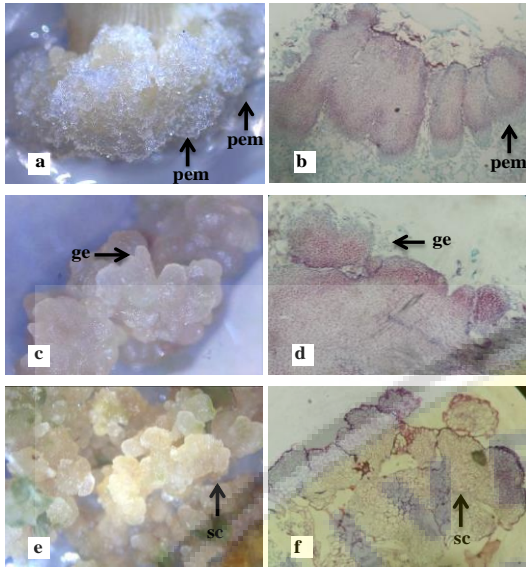


Fig. 3: Development of somatic embryo stage from time to time, a) pre-embryo mass structure of somatic embryo in 1 week after culture in the new medium. b) histological observation from pre-embryo mass structure. c) globular structure of somatic embryo in 2 weeks after culture. d) histological observation from globular structure. e) scutellar structure of somatic embryo in 2 weeks after culture. f) histological observation from scutellar structure. (pem: pre-embryo; ge: globular embryo; sc: scutellar)

Discussion

Spindle leaf is the most commonly explant performed for callus culture in sugarcane somatic embryogenesis research (Mahmud *et al.*, 2014; Sandhu *et al.*, 2016). Callus was first observed at the cut end of the spindle leaf as an explant after one week of culture. The callus was semi-translucent and consisted of loose and elongated cells. The callus started to look clear 11–15 days after planting. Callus induction began at the age of eight days after planting. However, a clearer callus did not begin to form and begin to differentiate to become embryogenic (embryoids) until 14 ± 21 days after planting. An embryonic callus is a callus that is 30–55 days old after planting. Both embryogenic callus and non-embryogenic callus could be present in the same clump. This phenomenon could be caused by characteristics of each cell or tissue and internal factors. Several studies have confirmed that embryogenic competent and incompetent callus appear on the same explant, indicating that although they are genetically similar, responses to a certain stimulus may be different, with a small percentage of the cells becoming responsive (Ho and Vasil, 1983).

The somatic embryo was an indicator that a series of somatic embryogenesis processes were successfully reached (Sholeha *et al.*, 2015; Widuri *et al.*, 2016). A special characteristic of the somatic embryo is that two meristems are developed at the end of the stage, shoot and root meristems. The regeneration process becomes easier to do

with no root induction in rooting medium. Transfer to the new culture medium may be needed for the formed callus at least six weeks after planting. If the callus is younger than six weeks, there would be little or no callus that can regenerate into plants. Callus age is an important factor to be considered in inducing somatic embryos (Ho and Vasil, 1983). Only callus that is 6–10 weeks after planting can induce somatic embryo (Roy *et al.*, 2011; Haq and Memon, 2012). The new culture medium must consist of a lower level auxin from callus induction medium. We used synthetic auxin (2,4-D at 3 mg/L level) in embryogenic callus activation media and transferred embryogenic callus in somatic embryo activation media with a lower level of auxin, that was only 1 mg/L. High level of auxin given at the start of culture triggered somatic cell to induce a specific gene, which produces a certain substance to complete a full somatic embryogenic process (Purnamaningsih, 2002). Auxin has a real effect on somatic embryo formation after successful induction of embryogenic callus (Almeida *et al.*, 2018). A significant fall in the auxin level in culture medium caused the embryogenic cells to elongate and form somatic embryo with the addition of L-proline into the culture medium (Moghaddam *et al.*, 2000; Gill *et al.*, 2004; Takahashi and Takamizo, 2013).

Somatic embryo phases could be seen on the surface of embryogenic callus. These stages occur within a short time and their ability reduces with the duration of incubation in the media. The first somatic embryo to be initiated had small, yellowish white color and friable, that can be noticed on the surface of the callus (Khalil, 2002). The most suitable parts for inducing callus were leaf sheath and midrib. The deepest leaf rolls (1–2 rolls) produced a finer texture callus compared with the callus produced from 4–5 leaf rolls that have a friable texture and were more suitable for inducing embryogenic callus. Leaf rolls that exceed the 6th roll cannot produce embryogenic callus but roots (Alfian, 2015). The density and number of embryogenic callus produced depend on the age of the leaves and the distance of the leaves used as explant from the basal section. Explant distance from the basal area about 1–2 cm forms almost 100% embryogenic callus (Ho and Vasil, 1983). Morphological observation became one of the important factors in this research. The embryogenic callus has certain features such as clear white to yellowish, glossy, and friable structures while the non-embryogenic callus is characterized by its milky to brownish-yellow color, more wet and soft, and has a compact callus structure that is not easy to differentiate (Alcantara *et al.*, 2014). Embryogenic callus characteristic was presented as a rounded shape with prominent nuclei, a high nucleus with small vacuoles. On the other side, non embryogenic callus was described as elongated, dispersed and vacuolated cells with a low nucleus. The non embryogenic callus was not be able to perform the regeneration process even upon the exposure of regeneration stimulus (Silveira *et al.*, 2013).

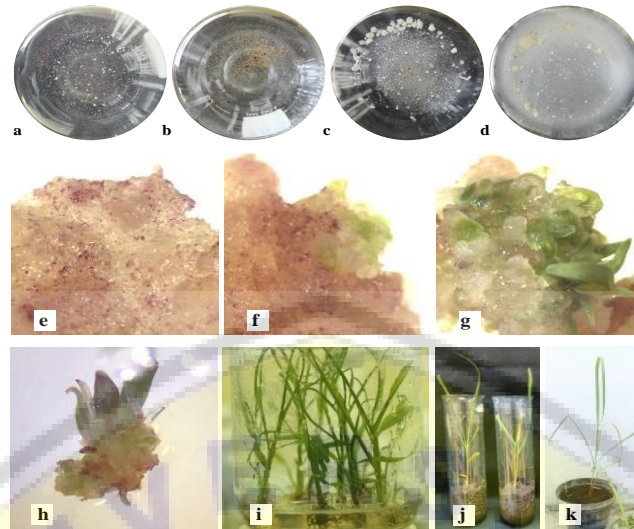


Fig. 4: The development from cell culture in the different combination liquid media proliferation to a whole new plantlet after regeneration. a) at 1 week of culture in all combination medium. And at the end time (6 weeks) of culture, which are: b) medium I (auxin -, arginine -). c) medium II (auxin \checkmark , arginine -). d) medium III (auxin \checkmark , arginine \checkmark). e) development of cell from liquid culture to regeneration in solid culture. f) green spot appeared after 3 weeks culture in solid media. g) shoot has been ready to develop become a plantlet. h) shoot that has been released from callus part. i) plantlet growth in culture jar. j) plantlet after 2 weeks acclimatization in the growth chamber. k) plant growth in greenhouse for 2 months

Callus multiplies as an unorganized mass of cells which makes it more difficult to observe its cellular phenomenon. A chemically defined liquid medium is expected to be an overcome the limitations of callus culture in solid medium. A friable callus was transferred to an agitated liquid medium and it readily dispersed after break up. The movement of the cell in relation to absorption of nutrient medium improves gaseous exchange and eliminates the nutrient gradient within the medium and at the surface of the cells. The first proliferation liquid medium which is auxin and amino acid-free medium gave no response to cell growth in the liquid proliferation medium. Depletion of auxin triggered browning phenomenon to cells in a liquid medium which hindered cells from proliferating. The presence of browning would hinder the absorption of nutrients by explants; it slows down the process of smoothening. When the plants are injured, such as during the process of cutting the leaf, the phenolic substances that are mainly present in the vacuoles, will be mixed with the contents of the plastids and other organelles and a dark color appears (Gill *et al.*, 2004; Yadav *et al.*, 2012; Ahmad *et al.*, 2013). These events will prevent enzyme activity and can cause death, both in explants and in the media.

A liquid media provides a better homogenization to culture, which both oxygen transport and aeration in the aerial and root zone as compared to solid media (Sajid and Pervaiz, 2008). The addition of low level auxin to the liquid culture in the second medium gave a significant result compared with what obtained in the first medium, where the cells could proliferate well (Purnamaningsih, 2002). A low level of auxin is needed to give the best effort and maintain

the torque of cell division. However, the third medium produced the best result among all combination media with the addition of auxin 1 mg/L 2,4-D and amino acid 50 mg/L L-Arginine. Several studies also support the results that amino acid has been used as organic nitrogen source in *in vitro* cultures of monocots to enhance somatic embryogenesis (Komor *et al.*, 1981; Loukanina and Thorpe, 2008). Sugarcane as one of most productive monocots plants also take up amino acids including L-arginine that could significantly increase the cell growth rate. A high uptake of L-arginine is due to its low *K_m* value of uptake system and low susceptibility to general trans inhibitory effect of the other amino acids. It is reported that extracellular arginine uptake for suspension cell growth was four times greater than lysine in the sugarcane cell (Sachdeva *et al.*, 2005; Asad *et al.*, 2009).

Conclusion

Liquid media for sugarcane somatic embryo proliferation could be used with the addition of 2,4-D and L-arginine to get a high number of embryogenic cells that could elongate and develop. Somatic embryo proliferated from liquid media could be regenerated normally with only the addition of L-glutamine because of its ability to form shoot and root meristems as it grows to become coleoptile.

Acknowledgements

This work was supported by grants from PTUPT Research Project 2017 number of contract 0515/UN25.3.1/LT/2017

for Dr. Ir. Parawita Dewanti, M.P. in the cooperation of Ministry of Research Technology and Higher Education and the University of Jember, and Prof. Dr. Ir. Bambang Sugiharto, M.Agr.Sc the Chief Director of Center for Development of Advanced Science and Technology (CDAST) of University of Jember.

References

- Ahmad, I., T. Hussain, I. Ashraf, M. Nafes, Maryam, M. Rafay and M. Iqbal, 2013. Lethal effects of secondary metabolites on plant tissue culture. *Amer. Eur. J. Agric. Environ. Sci.*, 13: 539–547
- Alcantara, G.B.D., R. Dibax, R.A.D. Oliveira, J.C.B. Filho and E. Daros, 2014. Plant regeneration and histological study of the somatic embryogenesis of sugarcane (*Saccharum* spp.) cultivars RB855156 and RB72454. *Acta Sci. Agron. Maringa*, 36: 63–72
- Alfian, F.N., 2015. *Mikropropagasi Tanaman Tebu (Saccharum officinarum L.) varietas NX1 I-3 melalui Embriogenesis Somatik*. Program Studi Agroteknologi, Fakultas Pertanian, Universitas Jember. Skripsi, Indonesia
- Almeida, R.O., S.D.A. Silva and L.F. Dutra, 2018. Induction of somatic embryogenesis and plant regeneration of sugarcane cv. RB925345 from somatic embryos. *Sci. Agrar. Paran.*, 17: 165–169
- Arjun and S. Rao, 2015. Callus induction and organogenesis in sugarcane (*Saccharum officinarum* L.) var 93v297. *Intl. Lett. Nat. Sci.*, 48: 14–22
- Asad, S., M. Arshad, S. Mansoor and Y. Zafar, 2009. Effect of various amino acids on shoot regeneration of sugarcane (*Saccharum officinarum* L.). *Afr. J. Biotechnol.*, 8: 1214–1218
- Dewanti, P., L.I. Widuri, F.N. Alfian, H.S. Addy, P. Okviandari and B. Sugiharto, 2015. Rapid propagation of virus-free sugarcane (*Saccharum officinarum*) by somatic embryogenesis. *Agric. Agric. Sci. Proc.*, 9: 456–461
- Figueroa, F.R.Q., R.R. Herera, R.M.G. Avalos and V.M.L. Vargas, 2006. Embryo production through somatic embryogenesis can be used to study cell differentiation in plants. *Plant Cell Tiss. Org. Cult.*, 86: 285–301
- Gill, N.K., R. Gill and S.S. Gosal, 2004. Factors enhancing somatic embryogenesis and plant regeneration in sugarcane (*Saccharum officinarum* L.). *Ind. J. Biotechnol.*, 3: 119–123
- Haq, I. and S. Memon, 2012. Efficient plant regeneration through somatic embryogenesis in sugarcane (*Saccharum officinarum* L.) cultivar CPF-237. *Afr. J. Biotechnol.*, 11: 3704–3708
- Heringer, A.S., C.S. Catarina and V. Silveira, 2018. Insights from proteomic studies into plant somatic embryogenesis. *Proteomics*, 18: 1–9
- Ho, W.J. and I.K. Vasil, 1983. Somatic embryogenesis in sugarcane (*Saccharum officinarum* L.) i. the morphology and physiology of callus formation and the ontogeny of somatic embryos. *Protoplasma*, 18: 169–180
- Jabeen, F.T.Z., Y.J. Parashuram and S. Rao, 2009. Sugarcane: in vitro biotic and abiotic stresses and molecular biotechnology studies - a review. *Plant Cell Biotechnol. Mol. Biol.*, 10: 1–18
- Jimenez, V.M., 2011. Regulation of *in vitro* somatic embryogenesis with emphasis on the role of endogenous hormones. *Rev. Bras. Fisiol. Veg.*, 13: 196–223
- Kaur, R. and M. Kapoor, 2015. Plant regeneration through somatic embryogenesis in sugarcane. *Sugar Technol.*, 1–7
- Khalil, S.M., 2002. Regeneration via somatic embryogenesis and microprojectile-mediated co-transformation of sugarcane. *Arab J. Biotechnol.*, 5: 19–32
- Komor, E., M. Thom and A. Maretzki, 1981. Mechanism of uptake of L-arginine by sugar-cane cells. *Eur. J. Biochem.*, 116: 527–533
- Loukanina, N. and T.A. Thorpe, 2008. Arginine and ornithine decarboxylases in embryogenic and non embryogenic carrot cell suspension. *In Vitro Cell. Dev. Biol. Plant*, 44: 59–64
- Mahmud, I., M. Thapaliya, A. Boroujerdi and K. Chowdhury, 2014. NMR-based metabolomics study of the biochemical relationship between sugarcane callus tissues and their respective nutrient culture media. *Ann. Bioanal. Chem.*, 406: 5997–6005
- Maretzki, A., L.G. Nickell and M. Thom, 1969. Arginine in growing cells of sugarcane, nutritional effects, uptake, and incorporation into proteins. *Physiol. Plantarum*, 22: 827–839
- Moghaddam, B.E., M. Mesbah and N. Yavari, 2000. The effect of in planta tibia and proline treatment on somatic embryogenesis of sugar beet (*Beta vulgaris* L.). *Euphytica*, 112: 151–156
- Mustafa, N.R., W.D. Winter, F.V. Iren and R. Verpoorte, 2011. Initiation, growth and cryopreservation of plant cell suspension cultures. *Nat. Protoc.*, 6: 715–734
- Percy, R.E., K. Klimaszewska and D.R. Cyr, 2000. *Evaluation of Embryogenesis Somatik for Clonal Propagation of Western White Pine*. NRC Research Press, Canada
- Purnamaningsih, R., 2002. Regenerasi *Tanaman melalui* embriogenesis somatik dan beberapa gen yang mengendalikannya. *Bull. AgroBiol.*, 5: 51–58
- Roy, M., M. Hossain, A. Biswas, M.K. Biswas and R. Islam, 2011. Plant regeneration through somatic embryogenesis from leaf sheath derived callus of sugarcane (*Saccharum officinarum* L.) var. Isd-16. *Plant Tiss. Cult. Biotechnol.*, 21: 143–149
- Sachdeva, M., A.P.S. Mann and S.K. Batta, 2005. Regulation of sucrose storage by amino acid arginine in sugarcane cell suspension cultures. *Acta Physiol. Plantarum*, 27: 37–43
- Sajid, G.M. and S. Pervaiz, 2008. Bioreactor mediated growth, culture, ventilation, stationary and shake culture effects on *in vitro* growth of sugarcane. *Pak. J. Bot.*, 40: 1949–1956
- Sandhu, J.S., M. Kaur, A. Kaur and A. Kalia, 2016. Single step direct transgenic plant regeneration from adventive embryos of agro-infected sugarcane (*Saccharum* spp.) spindle leaf roll segments with assured genetic fidelity. *Plant Cell Tiss. Org. Cult.*, 125: 149–162
- Sholeha, W., B. Sugiharto, D. Setyati and P. Dewanti, 2015. Induction somatic embryogenesis used 2,4-dichlorophenoxyacetic acid (2,4-D) and kinetin in spindle leaf explant sugarcane. *J. Ilmu Dasar*, 16: 17–24
- Silveira, V., A.M. de Vita, A.F. Marcedo, M.F.R. Dias, E.I.S. Floh and C.S. Catarina, 2013. Morphological and polyamine content changes in embryogenic and non-embryogenic callus of sugarcane. *Plant Cell Tiss. Org. Cult.*, 114: 351–364
- Suarez, C.M.C., 2013. Application of ballon type bubble bioreactor for micropropagation of *Aloe barbadensis* and *Lilium* hybrid. *Ph.D. Thesis*. Tuscia University, Viterbo, Italy
- Suprasanna, P., R.S. Choudhary, N.S. Desai and V.A. Bapat, 2005. Regulation of somatic embryogenesis by plant growth regulators in sugarcane. *Sugar Technol.*, 7: 123–128
- Tahir, S.M., K. Victor and S. Abdulkadir, 2011. The effect of 2,4-Dichlorophenoxyacetic acid (2,4-D) concentration on callus induction in sugarcane (*Saccharum officinarum*). *Nig. J. Basic Appl. Sci.*, 19: 213–217
- Takahashi, W. and T. Takamizo, 2013. Plant regeneration from embryogenic calli of the wild sugarcane (*Saccharum spontaneum* L.) clone 'glagah kloet'. *Bull. NARO Inst. Livest. Grassl. Sci.*, 13: 23–32
- Thorat, A.S., N.A. Sonone, V.V. Choudhari, R.M. Devarumath and K.H. Babu, 2017. Plant regeneration from cell suspension culture in *Saccharum officinarum* L. and ascertaining of genetic fidelity through RAPD and ISSR markers. *3 Biotech.*, 7: 15–28
- Wekesa, R., J.M. Onguso, B.A. Nyende and L.S. Wamocho, 2015. Sugarcane in vitro culture technology: opportunities for kenya's sugar industry. *Afr. J. Biotechnol.*, 14: 3170–3178
- Widuri, L.I., P. Dewanti and B. Sugiharto, 2016. A simple protocol for somatic embryogenesis induction of *in vitro* sugarcane (*Saccharum officinarum* L.) by 2,4-D and BAP. *Biovalentia: Biol. Res. J.*, 2: 1–9
- Williams, E.G. and Maheswaran, 1986. Somatic embryogenesis: factors influencing coordinated behavior of cells as an embryogenic group. *Ann. Bot.*, 57: 443–462
- Yadav, S., A. Ahmad, J. Rastogi and M. Lal, 2012. Tissue culture strategies in sugarcane (*saccharum officinarum* L.). *Intl. J. Pharma Biol. Sci.*, 3: 426–441

(Received 12 September 2018; Accepted 24 November 2018)