



# JURNAL Kesehatan Lingkungan

*Journal of Environmental Health*

Jurnal Kesehatan Lingkungan	Vol. 15	No. 4	Hal 247 - 316	Surabaya October 2023	ISSN 1829-7285
-----------------------------	---------	-------	---------------	-----------------------	----------------



P-ISSN: 1829-7285  
e-ISSN: 2540-881x



### Literature Review: Impact of Organophosphate Pesticide Exposure on Cholinesterase Enzyme Activity and Associated Risk Factors for Poisoning, 2017-2020

Rania Ichwana Wicaksono <sup>(1)</sup>, Eka Saul Manuel <sup>(2)</sup>, Aditya Sukma Pawitra <sup>(3)</sup>, Khuliyah Candraning Diyanah <sup>(4)</sup>, Soedjajadi Keman <sup>(5)</sup>, R. Azizah <sup>(6)</sup>, Ririh Yudhastuti <sup>(7)</sup>

(1) Department of Environmental Health, Faculty of Public Health, Universitas Airlangga, Surabaya 60115, Indonesia,

(2) Department of Environmental Health, Faculty of Public Health, Universitas Airlangga, Surabaya 60115, Indonesia,

(3) Department of Environmental Health, Faculty of Public Health, Universitas Airlangga, Surabaya 60115, Indonesia,

(4) Department of Environmental Health, Faculty of Public Health, Universitas Airlangga, Surabaya 60115, Indonesia,

(5) Department of Environmental Health, Faculty of Public Health, Universitas Airlangga, Surabaya 60115, Indonesia,

(6) Department of Environmental Health, Faculty of Public Health, Universitas Airlangga, Surabaya 60115, Indonesia,

(7) Department of Environmental Health, Faculty of Public Health, Universitas Airlangga, Surabaya 60115, Indonesia

247-256

Abstract : 0

PDF : 0 XML : 0



### Microplastic Pollution in Green Shells in Aquatic Ecosystems: A Literature Review of Determinant Factors and Management

Globila Nurika <sup>(1)</sup>, Hilda Nur Abidah <sup>(2)</sup>, Edza Aria Wikurendra <sup>(3)</sup>, Farida Wahyu Ningtyias <sup>(4)</sup>

(1) Department of Public Health, Faculty of Public Health, Universitas Jember, Jember, Indonesia,

(2) Department of Public Health, Faculty of Public Health, Universitas Jember, Jember, Indonesia,

(3) Doctoral School of Management and Organizational Science, Faculty of Economic Science, Hungarian University of Agriculture and Life Science, Kaposvar, Hungary,

(4) Department of Public Health, Faculty of Public Health, Universitas Jember, Jember, Indonesia

257-266

Abstract : 0

PDF : 0 XML : 0



### The Efficiency of Ascaris Spp. Eggs Inactivation in Sewage Sludge by Lime Dosage, Ammonia Concentration, and Temperature Variation

Husna Muizzati Shabrina <sup>(1)</sup>, Berti Setiani Muntalif <sup>(2)</sup>, Mayrina Firdayati <sup>(3)</sup>

(1) Department of Environmental Engineering, Faculty of Mineral Technology, Universitas Pembangunan Nasional "Veteran" Yogyakarta, Yogyakarta 55283, Indonesia,

(2) Department of Environmental Engineering, Faculty of Civil and Environment, Institut Teknologi Bandung, Bandung 40132, Indonesia,

(3) Department of Environmental Engineering, Faculty of Civil and Environment, Institut Teknologi Bandung, Bandung 40132, Indonesia

267-274

Abstract : 0

PDF : 0 XML : 0





## Analysis of Milking Hygiene and Its Association to Staphylococcus Aureus Contamination in Fresh Cow Milk

Nurus Saffana Yulianto <sup>(1)</sup>, Yunita Armiyanti <sup>(2)</sup>, Dini Agustina <sup>(3)</sup>, Bagus Hermansyah <sup>(4)</sup>, Wiwien Sugih Utami <sup>(5)</sup>

(1) Faculty of Medicine, Universitas of Jember, Jember 68121, Indonesia ,

(2) Department of Parasitology, Faculty of Medicine, Universitas of Jember, Jember 68121, Indonesia ,

(3) Department of Microbiology, Faculty of Medicine, Universitas of Jember, Jember 68121, Indonesia ,

(4) Department of Parasitology, Faculty of Medicine, Universitas of Jember, Jember 68121, Indonesia ,

(5) Department of Parasitology, Faculty of Medicine, Universitas of Jember, Jember 68121, Indonesia

275-282

Abstract : 0

PDF : 0 XML : 0

PDF

XML



## The Readiness of Wonosobo and Banjarnegara Towards Open Defecation Free Regencies

Sutopo Patria Jati <sup>(1)</sup>, Nurhasmadlar Nandini <sup>(2)</sup>, Nikie Astorina Yunita Dewanti <sup>(3)</sup>, Nissa Kusarjana <sup>(4)</sup>, Bimastyaji Surya Ramadan <sup>(5)</sup>, Budiyo Budiyo <sup>(6)</sup>, Pangí Pangí <sup>(7)</sup>, Vanessa Rizky Aditya <sup>(8)</sup>

(1) Faculty of Public Health, Universitas Diponegoro, Semarang 50238, Indonesia ,

(2) Faculty of Public Health, Universitas Diponegoro, Semarang 50238, Indonesia ,

(3) Faculty of Public Health, Universitas Diponegoro, Semarang 50238, Indonesia ,

(4) Faculty of Public Health, Universitas Diponegoro, Semarang 50238, Indonesia ,

(5) Department of Environmental Engineering, Faculty of Engineering, Universitas Diponegoro, Semarang 50238, Indonesia ,

(6) Faculty of Public Health, Universitas Diponegoro, Semarang 50238, Indonesia ,

(7) Department of Civil Engineering and Planning, School of Vacation, Universitas Diponegoro, Semarang 50238, Indonesia ,

(8) Faculty of Public Health, Universitas Diponegoro, Semarang 50238, Indonesia

PDF : 0 XML : 0

Abstract : 0

PDF

XML



## The Key Associated Factor of the Emergence of the Dengue Vector in Peri-Urban and Rural Settlements

Ayu Dewi Wiyata <sup>(1)</sup>, Wahyu Handoyo <sup>(2)</sup>, Sayono Sayono <sup>(3)</sup>

(1) Undergraduate Program of Public Health, Faculty of Public Health, Universitas Muhammadiyah Semarang, Semarang 50273, Indonesia ,

(2) Community Health Office of Provincial Health Office of Central Java Province, Semarang 50132, Indonesia ;

2.Faculty of Public Health, Universitas Muhammadiyah Semarang, Semarang 50273, Indonesia ,

(3) Faculty of Public Health, Universitas Muhammadiyah Semarang, Semarang 50273, Indonesia

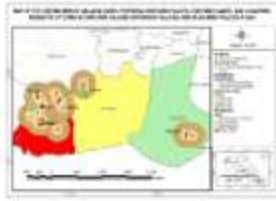
291-299

Abstract : 0

PDF : 0 XML : 0

PDF

XML



## Analysis of Malaria Transmission Dynamics at Borobudur Health Center, Magelang Regency (Case Study 2021-2022)

Naila Afniya<sup>(1)</sup>, Aris Santjaka<sup>(2)</sup>, Bahri Bahri<sup>(3)</sup>

(1) Bachelor of Applied Environmental Sanitation Study Program, Department of Environmental Health, Semarang Ministry of Health Polytechnic Semarang 50238, Indonesia,

(2) Department of Environmental Health, Semarang Ministry of Health Polytechnic Semarang 50238, Indonesia.

(3) Department of Environmental Health, Semarang Ministry of Health Polytechnic Semarang 50238, Indonesia

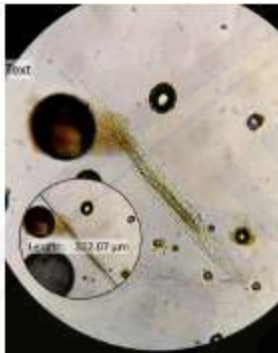
300-308

Abstract : 0

PDF : 0 XML : 0

PDF

XML



## Spatial Map of Geohelminths Infection in Agricultural Communities and its Contamination in Soil of Jatian Village, Jember Regency

Yunita Armiyanti<sup>(1)</sup>, Nanda Nuramna<sup>(2)</sup>, Muhammad Ariful Jauhani<sup>(3)</sup>, Bagus Hermansyah<sup>(4)</sup>, Wiwien Sugih Utami<sup>(5)</sup>

(1) Department of Parasitology, Faculty of Medicine, University of Jember, Jember 68121, Indonesia .

(2) Medical Education Program, Faculty of Medicine, University of Jember, Jember 68121, Indonesia .

(3) Department of Forensic Medicine and Medicolegal, RSD dr. Soebandi, Jember 68121, Indonesia .

(4) Medical Education Program, Faculty of Medicine, University of Jember, Jember 68121, Indonesia .

(5) Medical Education Program, Faculty of Medicine, University of Jember, Jember 68121, Indonesia

309-316

Abstract : 0

PDF : 0 XML : 0

PDF

XML

## Editorial Team



**Aditya Sukma Pawitra, S.KM., M.KL.**

**Editor in Chief**

Department of Environmental Health, Public Health Faculty, Universitas Airlangga, Indonesia

0000-0001-9300-8535

Aditya Sukma Pawitra

Scopus<sup>®</sup> 57212049104

6696305



**Prof. Soedjadi Keman, MD., MS., Ph.D.**

**Editorial Board**

Department of Environmental Health, Faculty of Public Health, Universitas Airlangga, Indonesia

0000-0002-4619-7692

Soedjadi Keman

Scopus<sup>®</sup> 6506391097

6053913



**TS Dr. Wan Ismahanisa Ismail, MLT., M.Sc., Ph.D.**

**Editorial Board**

Department of Medical Laboratory Technology Faculty of Health Sciences Universiti Teknologi MARA (Pilau Pinang) Bertam Campus, Malaysia

0000-0002-2711-0547

wan ismahanisa

Scopus<sup>®</sup> 57193530481



**Prof. Dr. Ing. Hendro Wicaksono**

**Editorial Board**

Department of Mathematics and Logistics, Jacobs University Bremen, Germany

0000-0001-5518-3375

Hendro Wicaksono

Scopus<sup>®</sup> 36447071900



**Prof. Chung-Yi Li, Ph.D**

**Editorial Board**

Department of Public Health, College of Medicine, National Cheng Kung University, Taiwan

0000-0002-0321-8908

李中一 Chung-Yi Li

Scopus<sup>®</sup> 56829729900



**Prof. Juliana Jalaludin, B.Sc., M.Sc., Ph.D**

**Editorial Board**

Department of Environmental and Occupational Health, Medicine and Health Science Faculty, Universiti Putra Malaysia, Malaysia

0000-0002-7910-6945

Jalaludin J

Scopus<sup>®</sup> 16316064900



**Salmiati, B.Sc., M.Eng Civil., Ph.D**

**Editorial Board**

Centre for Environmental Sustainability and Water Security (IPASA) Faculty of Civil Engineering, Universiti Teknologi Malaysia, Malaysia

0000-0002-8914-4048 SALMIATI Scopus 57200314642



**Associate Professor Dr. Muhammad Aziz Rahman, MBBS, MPH, CertGTC, GCHECTL, PhD**

**Editorial Board**

Federation University Australia, Australia

0000-0003-1665-7966 Associate Professor Dr Muhammad Aziz Rahman Scopus 55327627600



**Febi Dwirahmadi S.KM, M.Sc, Ph.D**

**Editorial Board**

Centre for Environment and Population Health, Griffith University, Australia

0000-0002-9367-3452 Febi Dwirahmadi, PhD Scopus 55900228400



**Argita Dyah Salindri, S.KM., M.PH., Ph.D**

**Editorial Board**

Stanford University School of Medicine, Stanford, United States of America

0000-0003-0962-0348 Argita Dyah Salindri Scopus 57193687955



**Chih-Chieh Chen, Ph.D.,CIH**

**Editorial Board**

Institute of Environmental and Occupational Health Sciences, National Taiwan University, Taiwan

0000-0002-9050-3749 Scopus 7501965833



**Prof. DR. dr. KRT. Adi Heru Husodo. M.Sc**

**Editorial Board**

Environmental and Public Health of Medical Faculty, Universitas Gajah Mada, Indonesia

0000-0002-4250-8721 Adi Heru Sutomo Scopus 57192987164 42479



**Dr. Nurjazuli, S.KM., M.Kes**

**Editorial Board**

Department of Environmental Health, Public Health Faculty, Universitas Diponegoro, Indonesia

0000-0002-0459-4999 nurjazuli nurjazuli Scopus 26868076400 4836



**Prof Dr. Agoes Soegianto, Ir., DEA**

**Editorial Board**

Environmental and Public Health of Medical Faculty, Universitas Airlangga, Indonesia

0000-0002-8030-5204

Agoes Soegianto

Scopus<sup>®</sup>

6506295541



6714645



**Khuliyah C Diyanah S.KM., MKL**

**Managing Editor**

Department of Environmental Health, Public Health Faculty, Universitas Airlangga, Indonesia

0000-0002-2034-3540

Khuliyah Candraning Diyanah

Scopus<sup>®</sup>

57211583589



6055340



**Zida Husnina, S.KM., M.PH**

**Managing Editor**

Department of Environmental Health, Public Health Faculty, Universitas Airlangga, Indonesia

0000-0003-3703-870X

Zida Husnina

Scopus<sup>®</sup>

57209256827



6719911



**Khoiriningtyas Ayu Puspita, S.KM**

**Administrative Assistant**

Faculty of Public Health, Universitas Airlangga, Indonesia

0000-0001-8792-676X

Khoiriningtyas Ayu Puspita

Scopus<sup>®</sup>

-



-



**Rani Pratiwi, S.KM**

**Administrative Assistant**

Faculty of Public Health, Universitas Airlangga, Indonesia

0000-0002-8431-4204

Rani Pratiwi

Scopus<sup>®</sup>

-



-

JEMBER

## SPATIAL MAP OF GEOHELMINTHS INFECTION IN AGRICULTURAL COMMUNITIES AND ITS CONTAMINATION IN SOIL OF JATIAN VILLAGE, JEMBER REGENCY

Yunita Armiyanti<sup>1\*</sup>, Nanda Nuramna<sup>2</sup>,  
Muhammad Afiful Jauhani<sup>3</sup>, Bagus  
Hermansyah<sup>2</sup>, Wiwien Sugih Utami<sup>2</sup>

<sup>1</sup>Department of Parasitology, Faculty of Medicine,  
University of Jember, Jember 68121, Indonesia

<sup>2</sup>Medical Education Program, Faculty of Medicine,  
University of Jember, Jember 68121, Indonesia

<sup>3</sup>Department of Forensic Medicine and Medicolegal, RSD  
dr. Soebandi, Jember 68121, Indonesia

**Corresponding Author:**

\*) yunita.fk@unej.ac.id

### Article Info

Submitted : 9 August 2023  
In reviewed : 10 September 2023  
Accepted : 24 October 2023  
Available Online : 31 October 2023

**Keywords :** Agricultural community, Contamination,  
Geohelminth, Soil, Spatial map

**Published by** Faculty of Public Health  
Universitas Airlangga

### Abstract

**Introduction:** Geohelminth infections are a neglected global health problem. Data from the World Health Organization (WHO) in 2020 show that more than 24% of the world population is infected by geohelminths. The condition of the agricultural soil, which tends to be loose and moist, supports the development of the infective form of the geohelminth. This makes agricultural communities susceptible to geohelminth infections. This study aimed to determine a spatial map of geohelminth infection in agricultural communities and its contamination in the soil of Jatian Village, Jember Regency. **Methods:** This study used an observational analytical design and a spatial analysis approach. Sampling was performed using a random sampling method that included 43 samples. Data were obtained by examining soil and stool samples and the coordinates of the sampling locations. Data were analyzed using spatial analysis. **Results and Discussion:** The results of this study indicated that the prevalence of geohelminth infection in agricultural communities was 23.3%, and its contamination in the soil was 6.98%. Hookworms caused infections among respondents, and contamination in the ground was caused by Hookworms and *Strongyloides stercoralis*. Clustering analysis results showed that geohelminth infection formed two secondary clusters. Spatial autocorrelation and buffer analysis showed clustering of geohelminth infections within the buffer range (<100 m), indicating that the infection spreads more easily within the cluster. **Conclusion:** The spatial map showed the distribution pattern of clustered geohelminth infection cases and their contamination in soil within proximity, thereby increasing the risk of geohelminth transmission.

## INTRODUCTION

Geohelminth or Soil-Transmitted Helminth (STH) infection is a worldwide health problem that includes neglected tropical diseases. The number of people infected with *Ascaris lumbricoides* is estimated at 1.2 billion, with 795 million people infected by *Trichuris trichiura* and 740 million by hookworm (1). According to data from the World Health Organization (WHO) in 2020, geohelminths infected more than 24% of the global population. Geohelminths are intestinal worms that require soil as a medium for transmission. A person can be infected by accidentally ingesting worm eggs or hookworm larvae that penetrate the skin (2). The common clinical symptoms of geohelminth infection

include abdominal pain, anorexia, abdominal distension, nausea, and diarrhea (3–4). When infected people defecate on the ground because of the lack of a latrine or as a habit, geohelminth eggs and larvae in feces contaminate the soil (5).

Agricultural communities are susceptible to geohelminth infection owing to exposure to soil while working in rice fields or gardens. Research conducted on plantation workers in July showed that nine out of 36 people (25%) were infected by geohelminths (6). Another study on farmers in Bandar Lampung explained that as many as 22 people (40%) were positively infected with STH (7). Several risk factors are associated with geohelminth infections among farmers. When working in the field, many farmers do not use personal protective

### Cite this as :

Armiyanti Y, Nuramna N, Jauhani MA, Hermansyah B, Utami WS. Spatial Map of Geohelminths Infection in Agricultural Communities and its Contamination in Soil of Jatian Village, Jember Regency. *Jurnal Kesehatan Lingkungan*. 2023;15(4):309-316. <https://doi.org/10.20473/jkl.v15i4.2023.309-316>





equipment, such as gloves and boots, to prevent direct contact with the soil (4, 8). Many farmers need to be made aware of clean and healthy living behaviors and good environmental sanitation, particularly defecation habits and the availability of latrines. Many farmers defecate in gardens, rivers, or ditches and facilitate the spread of geohelminth infection through soil contaminated with geohelminth eggs and larvae (9–10). Farmers also use human and animal wastes to fertilize crops that may contain geohelminth eggs and larvae (11–12). The soil condition in agricultural areas that tend to be loose and moist strongly supports the development of the infective form of geohelminths. A previous study showed that STH contaminates approximately 66% of the yard’s soil in public elementary schools in Bandung city. Larval nematodes, *Ascaris* eggs, *Trichuris* eggs, *Toxocara* eggs, and *Capillaria* eggs were found, and the most common STH was larval nematodes (53%) (13). Another study in Jember that compared the findings of STH eggs and larvae in river areas, plantation worker settlements, and coffee plantation areas showed that plantation worker settlements had the highest contamination rate (25.71%) (14).

The distribution of geohelminth infection in agricultural areas can be determined by spatial analysis using a Geographic Information System (GIS). Spatial data are geographically oriented, and by using specific coordinates, the location, trend, analysis, and modeling of geohelminth infections can be determined (15). Therefore, spatial data can be used as a reference/baseline for geohelminth infection prevention, control, and elimination. This study aimed to determine a spatial map of geohelminth infection in agricultural communities and its contamination in the soil in Jatian Village, Jember Regency.

**METHODS**

The design of this study was cross-sectional and was analyzed using a spatial approach. This research was conducted in Jatian Village, Pakusari District, Jember Regency, and the Parasitology Laboratory of the Faculty of Medicine, University of Jember, from November 2021–March to 2022. This research was approved by the Research Ethics Commission of the Faculty of Medicine, University of Jember, with ethics certificate number 545/H25.1.11/KE/2021.

The subjects in this study were from the agricultural community, which included farmers and their families living in Jatian Village, Jember Regency, with exclusion criteria for taking deworming medicine in the last three months. The data in this study were obtained from the results of soil examination, stool examination,

and coordinates of the sampling location. The stools were collected from agricultural communities willing to participate in the research by providing informed consent. The stool sample was placed in a closed, wide-mouthed container for immediate laboratory examination using the Kato-Katz method. The remaining stool in the container was placed in 10% formalin for further examination using sedimentation and flotation methods. The soil samples were examined by the flotation method using a saturated MgSo4 solution. According to WHO guidelines, geohelminth eggs and larvae were identified under a microscope at 100 and 400x magnification. Coordinate data collected using the Garmin GPS were entered into the software program for mapping and spatial analysis. Spatial analysis was performed using spatial overlays, buffers, clustering, and autocorrelation techniques.

**RESULTS**

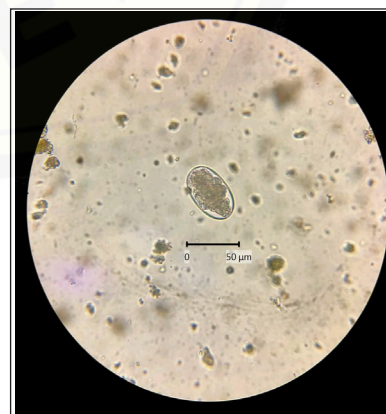
**Geohelminth Infection in Agricultural Community and its Contamination in Soil**

The results of the examination of stool and soil samples in Table 1 show that the number of positive stool samples was 10 (23.3%), and the number of positive soil samples was three (6.98%).

**Table 1. Distribution of Geohelminth Species in Stool Aand Soil Samples**

Sample	Number (%)		Negative	Total (%)
	<i>Hookworm</i>	<i>S. stercoralis</i>		
Fecal Sample	10 (23.3%)	0 (0%)	33 (76.7%)	43 (100%)
Soil Sample	2 (4.65%)	1 (2.33%)	40 (93.02%)	43 (100%)

Hookworm eggs were found to be the only geohelminth infection in stool samples, as shown in Figure 1.



**Figure 1. Hookworm Eggs Observations in Stool Samples**

The positive soil samples were contaminated by hookworm larvae (4.65%) and *Strongyloides stercoralis* larvae (2.33%), as shown in Figure 2.

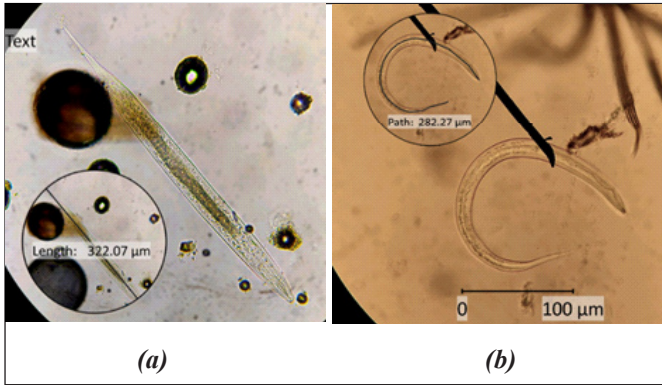


Figure 2. Geohelminth Observations on Soil Samples. (a) Hookworm Rhabditiform Larvae; (b) *Strongyloides stercoralis* Filariform Larvae

**Spatial Analysis of Geohelminth Infection with its Contamination in Soil**

Spatial analysis was performed using spatial overlays, buffers, clustering, and autocorrelation techniques. The results of the overlay analysis showed that cases of geohelminth infection tended to cluster in geohelminth-contaminated soil, but some points were spread. A more detailed description of the map is presented in Figure 3.

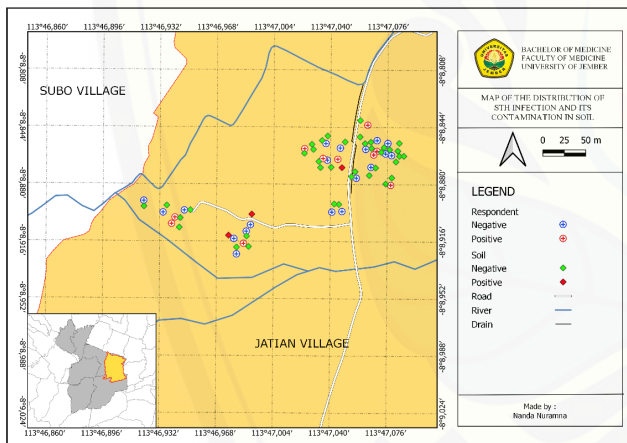


Figure 3. Map of Geohelminth Infection Distribution with Contamination on Soil

Cluster analysis was used to identify high-risk areas, as shown in Figure 4. The data used to carry out this analysis were the coordinates of the respondent's location and the date of illness based on the date of stool examination. SaTScan analysis showed that geohelminth infection cases in Jatian Village, Jember Regency, formed two secondary clusters, as shown in Figure 4. Secondary cluster 1 occurred in the southwest area of Jatian Village with a radius of 97.06 m and included three cases. The results of the secondary Cluster 1 analysis were statistically significant, with a p-value of 0.039. Secondary cluster 2 occurred in the northern area of Jatian Village with a radius of 36.89 m and included five cases. The results of the analysis of

secondary cluster 2 were not statistically significant ( $p = 0.763$ ). Twelve respondents resided within the range of secondary cluster 1 were 12 respondents, and three were positively infected with geohelminths. This indicates that 25% of all respondents in the field of secondary cluster 1 were significantly at risk of geohelminth infection.

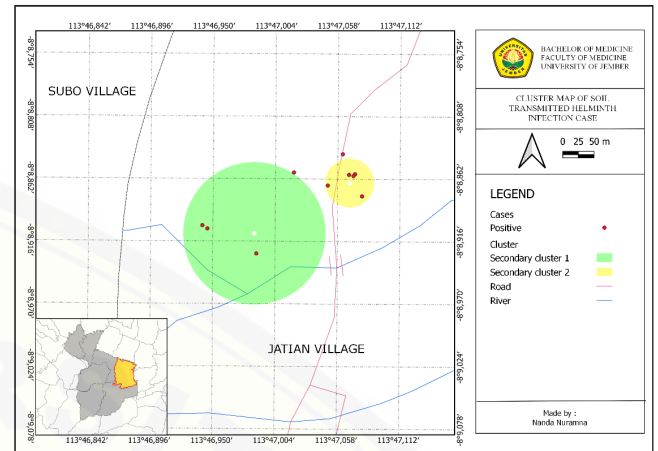


Figure 4. Geohelminth Infection Case Clustering Map

Spatial autocorrelation was used to determine the distribution pattern of geohelminth infections in Jatian Village, Jember Regency. In this study, spatial autocorrelation was analyzed using the Moran index method. The Moran's index value obtained was 0.696. This is in the  $0 < I \leq 1$  range, indicating a positive spatial autocorrelation. This suggests that each location of respondents who were positively infected with geohelminth has similar attribute values. The z-score and p-value are 2.495 and 0.013, which indicate that the distribution of geohelminth infection prevalence in Jatian Village, Jember Regency, is clustered.

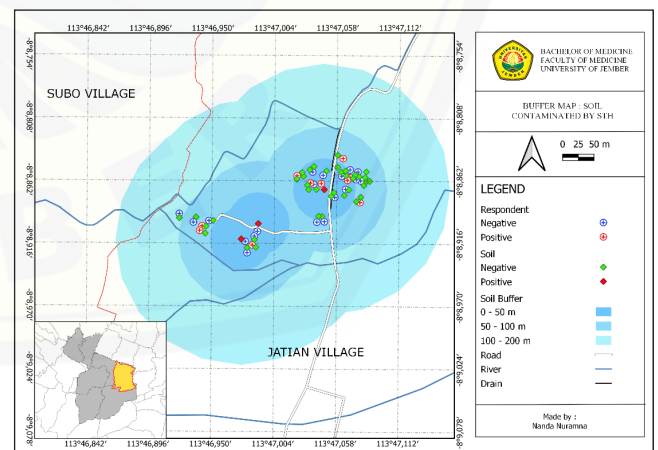


Figure 5. Geohelminth Contaminated Soil Buffer Map

Geohelminth-contaminated soil buffers were used at depths of 50, 100, and 200 m (Figure 5). The buffer analysis aimed to determine whether the geohelminth infection was within the range of the contaminated soil buffer. The results showed that 24 respondents were in the buffer of <50 m, and six were

positively infected with geohelminths. Respondents had a 25% chance of being infected with geohelminths in the range of <50 m. In the 50–100 m buffer, there were 18 respondents, four of whom were positively infected with geohelminths. These results also showed that in a buffer of 50–100 m, respondents had a 22.22% chance of being infected with geohelminths. Another respondent was in a buffer of more than 100 m and was not infected with geohelminths because the respondents had no chance of being infected with geohelminths from contaminated soil.

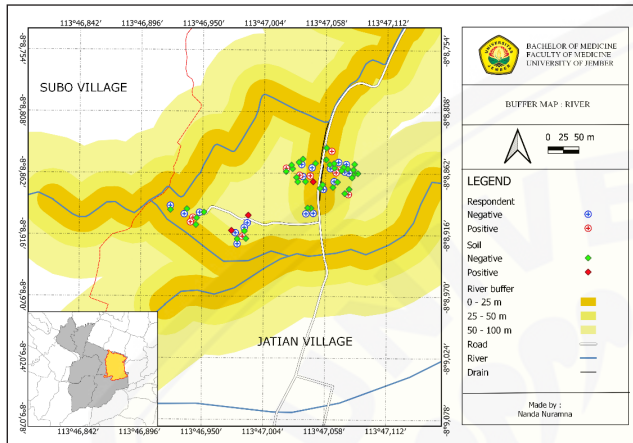


Figure 6. River Buffer Map

Buffer analysis was also carried out on rivers around Jatian Village to determine the distance between the respondent's residence and the river, which could be a source of STH infection. River buffering was performed at 25, 50, and 100 m depths. The results showed that respondents infected with geohelminths resided at a distance of <50 m from the river and only one respondent resided at a distance of >50 m from the river (Figure 6).

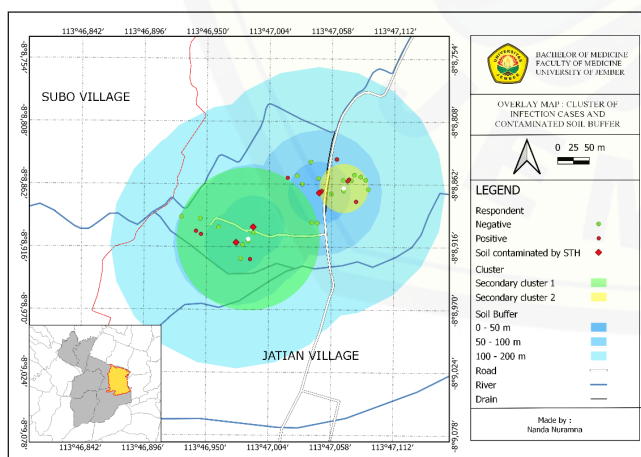


Figure 7. Overlay Map: Geohelminth Infection Case Cluster and Contaminated Soil Buffer

The geohelminth infection case clustering map was overlaid with a geohelminth-contaminated soil buffer map (Figure 7). The map showed that the secondary cluster center was formed within a buffer range of <25 m from the geohelminth-contaminated soil, and secondary

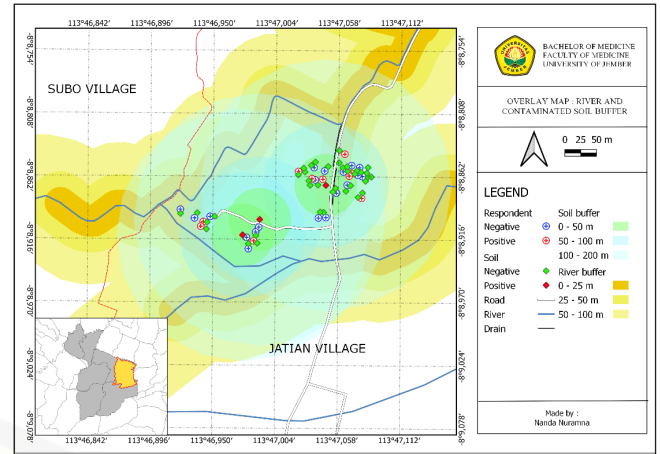


Figure 8. Overlay Map: Geohelminth Contaminated Soil Buffer and River Buffer

cluster center two was created within a buffer range of <50 m from the geohelminth-contaminated soil. The geohelminth-contaminated soil buffer map was overlaid with the river buffer map. The results showed a wedge between the STH-contaminated soil buffer and the river buffer in all residential areas of Jatian Village (Figure 8).

## DISCUSSION

This study showed that the prevalence of geohelminth infection in Jatian village is low (23.3%). This result is consistent with research conducted in Kaliputih village, Jember, in 2019, which showed that nine (25%) Kaliputih plantation workers were infected by STH (6). Another study on agrarian communities in Nigeria showed that 34.2% of the individuals were infected with at least one STH. Hookworms were the most prevalent (18.1%), followed by *Ascaris lumbricoides* (16.8%) (16). Internal and external factors influence the prevalence of geohelminth infections in different areas. Internal factors such as poor community hygiene, socioeconomic factors, and the education level of farmers who tend to be low may lead to unhealthy habits that facilitate the transmission of geohelminth infection (17–18). Respondents with bad habits, such as frequent contact with the ground, poor use of Protective Personal Equipment (PPE), bathing and defecating in rivers, and risk of geohelminth infection. External factors, including an agricultural environment suitable for geohelminth development into an infectious stage, can cause a high incidence of geohelminth infections (19). Environmental conditions in Jatian Village, which tend to be moist and loose, also support the development of geohelminth eggs and larvae. The transmission of geohelminths can occur when the skin contacts hookworm larvae in the soil or when infective geohelminth eggs are ingested (20).

This study found only hookworm eggs in stool samples (10 samples) positive for geohelminth infection.

This result supports a previous study showing that the highest intensity of hookworm infection was found in adults and agricultural workers (1). Another study on farmers in Bandar Lampung also showed that the worm that infected farmers the most was hookworm (13 farmers, 59.1%) (7). Research on agricultural communities in the Bolivian Amazon also showed that the species that infected the most agricultural communities was the hookworm (83%) (16). Hookworm infection, which is relatively high in agricultural communities, can be caused by an environment suitable for the development of hookworms into infective larvae. Loose soil containing high humus in plantation areas and home gardens makes it easier for hookworm larvae to move and position themselves to penetrate the skin (21). Therefore, PPE such as footwear and gloves can prevent hookworm larvae penetration. Almost all the respondents wore footwear when leaving the house, but the majority of respondents still needed to wear adequate PPE when working in the rice field. Most respondents used open hands to plant rice and make contact with the soil, and only five wore footwear and gloves. Therefore, the risk of hookworm transmission through the skin of the hands is high, as long as they are still in contact with the ground.

The prevalence of geohelminth-contaminated soil was 6.98% in 43 soil samples. This result is lower than the research conducted in the Silo sub-district, Jember Regency, which found that STH contamination was 25.71% in garden workers' settlements (14). Another study showed that STH contamination in rural Philippine soil was very high at 70%, with the highest percentage in the yard area (42.8%) (13). The low soil geohelminth contamination in Jatian Village could be caused by people who do not have latrines and prefer to defecate in the river than on the ground. Sources of geohelminth contamination in the soil can also originate from animals around the yard, such as farm animals, cats, and dogs.

Hookworms and *Strongyloides stercoralis* larvae were found to contaminate the soil at the research site. This result supports previous research conducted in garden workers' settlements in the Silo sub-district, Jember Regency, which showed that hookworm larvae were found to contaminate the most (50%) (14). Two factors can cause soil to be contaminated by hookworm larvae; some residents may be infected with hookworms and open defecation or come from infected animals. This result also supports another study that stated that Widodaren plantation workers defecated in the garden, and 29.4% of respondents were positively infected by STH (22). *Strongyloides stercoralis* larvae were also observed in this study. *Strongyloides stercoralis* has two life cycles: the parasitic cycle in the human body and

the free-living cycle in the soil. *Strongyloides stercoralis* can survive and thrive in soil without infecting humans by eating the bacteria present in the soil (23–24). These results also show that the soil in the agricultural area is very suitable for growing hookworms and *S.stercoralis* larvae. Therefore, contaminated soil could be a source of geohelminth transmission for farmers.

### Spatial Analysis of Geohelminth Infection and its Contamination in Soil

Overlay mapping of the distribution of geohelminth infections and geohelminth contamination of the soil in Jatian Village indicates that cases of geohelminth infection occur in areas around contaminated soil. Living close to soils contaminated by geohelminths has a greater risk of disease. Most of this area is used for agricultural land, and the residential houses are close to each other. On average, the distance between adjacent houses was at most 5 m. This condition could narrow the scope of interaction between people and increase the risk of transmission through geohelminth-contaminated soil.

Cluster analysis was performed to determine the location of the formation of the geohelminth infection cluster and the extent to which the radius of the cluster was formed. The results of cluster analysis using mapping and spatial analysis software showed the formation of two secondary clusters with a radius of 97.06 m and 36.89 m. Based on the results of the analysis, the first secondary cluster was statistically significant ( $p < 0.01$ ), while the second secondary cluster was not statistically significant ( $p > 0.01$ ). The first secondary cluster, 1, formed with a radius of 1.69 km and was statistically significant ( $p = 0.011$ ). The second secondary cluster was formed with a radius of 0.41 km and was not statistically significant ( $p = 0.069$ ). The secondary cluster with no statistical significance indicated a low cluster value and less influence between proximity to position, number of cases, and time of illness. The formation of clusters suggests transmission of geohelminth infection in the study area. The presence of people infected with geohelminths in the cluster area will affect people who live within the cluster range by increasing the transmission of geohelminths (25). The data of this study showed that in the first secondary cluster, 25% of people were at a high risk of being positively infected with geohelminths. This number was more significant in the second secondary cluster (33.33%).

The Moran's I index of the spatial analysis showed positive spatial autocorrelation. This means that between cases of geohelminth infection, there were similar values and clustering of cases in Jatian

Village and Jember Regency. This result is in line with a study that reported that the distribution of dengue cases in Tasikmalaya from 2011 to 2015 showed a positive autocorrelation, and the Moran index showed a clustered distribution pattern (26). Another study also showed a positive autocorrelation in the distribution of dengue cases in Bandung (27). Different results were shown by the study in Bantul Regency, which stated that based on autocorrelation analysis, no spatial correlation occurred in cases of STH infection; however, there was spatial correlation based on the soil type map and the number of cases (28). The Moran index value indicates a high number of cases in the area; the higher the Moran index, the higher the number of cases in the area studied (29–30). The Moran index also indicates the possibility of another geohelminth infection case if a positive case is found in the same cluster area.

Buffer analysis of the geohelminth-contaminated soil showed that all cases were within the buffer range (<100 m), and 60% of the cases were very close to the contaminated soil (<50 m). This condition will increase the respondent's risk of being infected by geohelminths because the location of the respondents' close houses is still within the buffer range.

Buffer analysis of the river showed that most geohelminth infection cases occurred at a distance of less than 50 m from the river. The residents bathe, wash, and defecate in the river. This habit can contaminate rivers with geohelminths and can become a source of infection. The map of the contaminated soil buffer and river buffer showed that the distance between the respondent's residence and the source of infection, both land and rivers, is very close, thereby increasing the risk of transmission.

The overlay between the clustering of geohelminth infection cases and infected soil buffers showed that the cluster's center was near the area of contaminated soil. Contaminated soil around settlements can be a source of transmission in agricultural communities. The overlay map of the geohelminth-contaminated soil buffer with the river buffer also showed an intersection between the contaminated soil buffer and the river buffer in all residential areas of Jatian Village. This means that residential areas at the intersection of these two buffers have a high risk of geohelminth transmission. In intersecting areas, the risk of transmission is higher because of geohelminth contamination in rivers and soil. Therefore, the agricultural community must prevent geohelminth transmission by changing defecation habits and using footwear and gloves as personal protective equipment.

## ACKNOWLEDGEMENTS

We thank the Institute of Research and Community Service (LP2M), which has funded this research through a research group to study parasitic diseases in agromedicine.

## CONCLUSION

The prevalence of geohelminth infection in the agricultural community in Jatian Village was low (23.3%), as was soil contamination (6.98%). Hookworms were the only geohelminths that infected the agricultural community, while hookworms and *Strongyloides stercoralis* larvae contaminated the soil. Spatial mapping showed that the distribution pattern of geohelminth infection cases was clustered, and the clustering occurred within a buffer range with a radius of <100 m. Two secondary clusters showed that geohelminth transmission occurred at distances close to the source of infection (infection cases and contaminated soil).

## REFERENCES

- Gilmour B, Alene KA, Clements ACA. The Prevalence of Soil Transmitted Helminth Infections in Minority Indigenous Populations of South-East Asia and the Western Pacific Region: A Systematic Review and Meta-Analysis. *PLoS Neglected Tropical Diseases*. 2021;15(11):1–30. <https://doi.org/10.1371/journal.pntd.0009890>
- World Health Organization. Soil-Transmitted Helminth Infections. Geneva: World Health Organization; 2023. <https://www.who.int/news-room/fact-sheets/detail/soil-transmitted-helminth-infections>
- Bharti B, Bharti S, Khurana S. Worm Infestation: Diagnosis, Treatment and Prevention. *Indian Journal of Pediatrics*. 2018;85(11):1017–1024. <https://doi.org/10.1007/s12098-017-2505-z>
- Kowalczyk K, Kłapeć T. Contamination of Soil with Eggs of Geohelminths *Ascaris spp.*, *Trichuris spp.*, *Toxocara spp.* in Poland - Potential Source of Health Risk in Farmers. *Annals of Parasitology*. 2020;66(4):433–440. <https://doi.org/10.17420/ap6604.283>
- Nugraha TI, Semiarty R, Irawati N. Hubungan Sanitasi Lingkungan dan Personal Hygiene dengan Infeksi Soil Transmitted Helminths (STH) pada Anak Usia Sekolah di Kecamatan Koto Tengah Kota Padang. *Jurnal Kesehatan Andalas*. 2019;8(3):590–598. <https://doi.org/10.25077/jka.v8i3.1046>
- Baidowi II, Armiyanti Y, Febianti Z, Nurdian Y, Hermansyah B. The Correlation between the Use of Personal Protective Equipment (PPE) and Soil-Transmitted Helminths Infection in the Workers of Kaliputih Plantation Jember Regency. *Journal of Agromedicine and Medical Science*. 2019;5(2):61–68. <https://doi.org/10.19184/ams.v5i2.9625>

7. Saftarina F, Hasan M, Suwandi JF, Syani AY. Kejadian Infeksi Soil-Transmitted Helminth pada Petani. *Jurnal Kedokteran Syiah Kuala*. 2020;20(3):167–171. <https://doi.org/10.24815/jks.v20i3.18732>
8. Apsari PIB, Winianti NW, Arwati H, Dachlan YP. Gambaran Infeksi Soil Transmitted Helminth pada Petani di Desa Gelgel Kabupaten Klungkung. *WICAKSANA Jurnal Lingkungan dan Pembangunan*. 2020;4(2):21–30. <https://doi.org/10.22225/wicaksana.4.2.2020.21-30>
9. Yani I, Putri NLNDD, Abadi MF. The Relationship between Personal Hygiene and Soil Transmitted Helminths in Vegetable Farmers in Gianyar District. *Bali Medika Jurnal*. 2021;8(3):233–238. <https://doi.org/10.36376/bmj.v8i3.162>
10. Prabandari AS, Sari AN, Ferlinda Ahtamagara A, Santo P, Surakarta P. Infeksi Nematoda Usus pada Petani di Kabupaten Sukoharjo Jawa Tengah dan Faktor yang Mempengaruhinya. *Indonesian Journal on Medical Science*. 2023;10(2):2023. <https://doi.org/10.55181/ijms.v10i2.432>
11. Suparni, Hayunisaq. Hubungan Infeksi Soil Transmitted Helminths (STH) terhadap Karakteristik Masyarakat Lingkungan sekitar Peternakan di Daerah Klumpang Kampung Kecamatan Hampan Perak. *Jurnal Analisa Laboratorium Medis*. 2019;1(1):16–23.
12. Aritonang BNR. Hubungan Personal Higiene dengan Penyakit Cacing (Soil Transmitted Helminth) pada Petani Sayur Kartama Kota Pekanbaru. *Jurnal Sains dan Teknologi Laboratorium Medik*. 2019;4(2):39–43. <https://doi.org/10.52071/jstlm.v4i2.53>
13. Astuti RDI, Ismawati, Rathomi HS. Soil-Transmitted Helminths Contamination on the Yard's Soil of the Public Elementary Schools in Bandung City. *Global Medical & Health Communication*. 2020;8(3):193–198. <https://doi.org/10.29313/gmhc.v8i3.6596>
14. Mahartika RP, Armiyanti Y, Abrori C, Hermansyah B, Nurdian Y. Difference between Location of Soil with Risk of Contamination of Soil-Transmitted Helminths Eggs and Larvae (Observational Study of Coffee Plantation Area in Silo District, Jember Regency). *Journal of Agromedicine and Medical Sciences*. 2019;5(3):136–140. <https://doi.org/10.19184/ams.v5i3.9468>
15. Yaro CA, Kogi E, Luka SA, Yaro CA, Kogi E, Luka SA. Spatial Distribution and Modeling of Soil Transmitted Helminthes Infection in Nigeria. *Advances in Infectious Diseases*. 2018;8(2):82–107. <https://doi.org/10.4236/aid.2018.82010>
16. Anunobi JT, Okoye IC, Aguzie IO, NdukweYE and Okpasuo OJI. Risk of Soil-Transmitted Helminthiasis among Agrarian Communities of Kogi State, Nigeria. *Annals of Global Health*. 2019;85(1):1–13. <https://doi.org/10.5334/aogh.2563>
17. Belay DG, Asratie MH, Gashaw M, Tsega NT, Endalew M, Aragaw FM. Community and Individual Level Determinants and Spatial Distribution of Deworming among Preschool Age Children in Ethiopia: Spatial and Multi-Level Analysis. *BMC Public Health*. 2022;22(872):1–13. <https://doi.org/10.1186/s12889-022-13249-y>
18. Ojja S, Kisaka S, Ediau M, Tuhebwe D, Kisakye AN, Halage AA, et al. Prevalence, Intensity and Factors Associated with Soil-Transmitted Helminths Infections among Preschool-Age Children in Hoima District, Rural Western Uganda. *BMC Infectious Diseases*. 2018;18(408):1–12. <https://doi.org/10.1186/s12879-018-3289-0>
19. Kiiti RW, Omukunda EN, Korir JC. Risk Factors Associated with Helminthic Intestinal Infection in Lurambi Subcounty, Kakamega, Kenya. *Journal of Parasitology Research*. 2020;2020(8810519):1–9. <https://doi.org/10.1155/2020/8810519>
20. Al-Tameemi K, Kabakli R. *Ascaris lumbricoides*: Epidemiology, Diagnosis, Treatment, and Control. *Asian Journal of Pharmaceutical and Clinical Research*. 2020;13(4):8–11. <https://doi.org/10.22159/ajpcr.2020.v13i4.36930>
21. Gilgen DD, Mascie-Taylor CGNCGN, Rosetta LL. Intestinal Helminth Infections, Anaemia and Labour Productivity of Female Tea Pluckers in Bangladesh. *Tropical Medicine & International Health*. 2001;6(6):449–457. <https://doi.org/10.1046/j.1365-3156.2001.00729.x>
22. Rahmawati ZR, Hermansyah B, Efendi E, Armiyanti Y, Nurdian Y, Utami WS. Association between Personal Hygiene and Incidence of Soil-Transmitted Helminthiasis among Workers at Widodaren Plantation in Jember Regency. *Journal of Agromedicine and Medical Sciences (AMS)*. 2020;6(1):7–13. <https://doi.org/10.19184/ams.v6i1.9593>
23. Paniker CKJ, Ghosh S. Paniker's Textbook of Medical Parasitology. London: JP Medical Ltd; 2018. 1–271 p.
24. Czeresnia JM, Weiss LM. Strongyloides Stercoralis. *Lung*. 2022;200(2):141–148. <https://doi.org/10.1007/s00408-022-00528-z>
25. Goodhead DA, Dirisu CG, Ayenku JE. Observation on Bionomics, Prevalence and Survival Value of Geohelminth in the Rural Communities of Rivers State. *African Journal of Biological Sciences*. 2022;4(1):48-55. <https://doi.org/10.33472/AFJBS.4.1.2022.48-55>
26. Ruliansyah A, Yuliasih Y, Ridwan W, Kusnandar AJ. Analisis Spasial Sebaran Demam Berdarah Dengue di Kota Tasikmalaya Tahun 2011–2015. *Aspirator: Jurnal Penelitian Penyakit Tular Vektor*. 2017;9(2):85–90. <https://dx.doi.org/10.22435/aspirator.v9i2%20Des.6474.85-90>
27. Hernawati R, Ardiansyah MY. Analisis Pola Spasial Penyakit Demam Berdarah Dengue di Kota Bandung Menggunakan Indeks Moran. *Rekayasa Hijau Jurnal Teknologi Ramah Lingkungan*. 2017;1(3):221–232. <https://doi.org/10.26760/jrh.v1i3.1774>
28. Muslimawati NM, Widayani P. Analisis Spasial Penyakit Kecacingan Soil Transmitted Helminth dengan Karakteristik Tanah melalui Pendekatan Geomorfologi di Kabupaten Bantul. *Jurnal Bumi Indonesia*. 2016;5(1):1–9. <https://www.neliti.com/id/publications/223065/analisis-spasial-penyakit-kecacingan-soil-transmitted-helminth-dengan-karakteris#cite>

29. Leta GT, Mekete K, Wuletaw Y, Gebretsadik A, Sime H, Mekasha S, et al. National Mapping of Soil-Transmitted Helminth and Schistosome Infections in Ethiopia. *Parasites & Vectors*. 2020;13(437):1–13. <https://doi.org/10.1186/s13071-020-04317-6>
30. Saputro DR, Widyaningsih P, Kurdi NA, Susanti A. Proporsionalitas Autokorelasi Spasial dengan

Indeks Global (Indeks Moran) dan Indeks Lokal (Local Indicator of Spatial Association (LISA)). *Prosiding Konferensi Nasional Penelitian Matematika dan Pembelajarannya (KNPMP) III 2018*. 2018;3(1):701–710. <https://publikasiilmiah.ums.ac.id/handle/11617/10154>

