

Health Notions

Published by: Humanistic Network for Science and Technology



<http://heanoti.com/index.php/hn>

Volume 2 Number 2
February 2018



Health Notions

ISSN: 2580-4936
(online version only)

Published by:
Humanistic Network for Science and Technology

Cemara Street 25, RT.01 RW.02, Ds./Kec. Sukorejo, Ponorogo, East Java, Indonesia
63453

Phone: +6285853252665
Email: hunescite@gmail.com, admin@heanoti.com

<http://heanoti.com/index.php/hn>

"Health Notions" is a media for the publication of articles on research, book review and literature review in the areas of health science and practice such as public health, medicine, dentistry, pharmaceutical, environmental health, nursing, midwifery, nutrition, health technology, clinical laboratories, health education, health information system, health management, and health popular.

EDITORIAL TEAM

Editor in Chief:

Dr. Heru Santoso Wahito Nugroho, S.Kep., Ns., M.M.Kes., C.P.M.C.
Leader & Research Consultant, *Forum Ilmiah Kesehatan* (Scientific Forum of Health);
Lecturer, Health Polytechnic of Health Ministry at Surabaya, Indonesia.

Editors:

- Dr. David Ackah-Ph.D, CPMC, FPMP, FCISCM, FCICRM, FCE, PGDPM, M.Sc, B.Sc, Dip.
President, Institute of Project Management Professionals, Ghana.
- Dr. Michael Burns-Ph.D.
Director, Medical Practitioner, Med Hospital USA
- Dr. Hadi Prayitno, Drs., M.Kes.
Lecturer, University of Jember, Indonesia.
- Dr. Noer Saudah, S.Kep., Ns., M.Kes.
Lecturer, College of Health Science "Bina Sehat", Indonesia
- Dr. Tri Niswati Utami, S.K.M., M.Kes.
Lecturer, Islamic University of Medan, Indonesia.
- Dr. Muhammad Anshari, Apt., M.M.
Lecturer, Muhammadiyah University of Banjarmasin, Indonesia.
- Dr. Elvis Lotten,
Dean of Medical School, University of Regional Medicals, Costa Rica.
- Dr. Huger Vinnit
Head of Pharmacy Department, University of Science and Technology, China.
- Wiwin Martiningsih, S.Kep., Ns., M.Kep, Ph.D., NS (c)
Lecturer, Health Polytechnic of Ministry of Health at Malang, Indonesia.
- Joel Rey Ugsang Acob, MA, RN, DNS (c)
Lecturer, Faculty of Nursing, Visayas State University, Philippines.
- Autu Tanko Titus, RN, Bsc. Nursing Scie., DPA, ADL, PGDE, MSc. Nur Scie. FWACN
Deputy Director, Nursing Services, MOH & Hospital Services, Minna, Niger State,
Nigeria; Lecturer, College of Nursing Sciences, School of Midwifery, Minna, Niger
State, Nigeria
- Dr. Yessy Dessy Arna, S.Kp., M.Kep. Sp.Kom.
Lecturer, Health Polytechnic of Health Ministry at Surabaya, Indonesia.
- Dr. Indah Lestari, S.Kep., Ns., M.Kes.
Lecturer, College of Health Science "Bina Sehat", Indonesia.
- Dr. Kennedy Edem Kukuia
Neuropharmacologist, University of Ghana Hospital; Lecturer, University of Ghana,
Ghana.
- Dr. Sahrir Sillehu, S.K.M., M.Kes.
Lecturer, Institute of Health Science "Maluku Husada", Indonesia.
- Dr. K. G. Agyenim Boateng
Physician, University of Ghana Hospital; Lecturer, University of Ghana, Ghana.
- Dr. Byba Melda Suhita, S.Kep., Ns., M.Kes.
Lecturer, Institute of Health Science "Surya Mitra", Indonesia

Secretariate:

Suparji, S.S.T., S.K.M., M.Pd.
Secretary, *Forum Ilmiah Kesehatan* (Scientific Forum of Health); Lecturer, Health
Polytechnic of Health Ministry at Surabaya, Indonesia.

FOCUSE AND SCOPE

"Health Notions" is a media for the publication of articles on research and review of the literature. We accept articles in the areas of health science and practice such as public health, medicine, pharmaceutical, environmental health, nursing, midwifery, nutrition, health technology, clinical laboratories, health education, and health popular.

REVIEW

Article submitted to this journal going through two types of reviews. The first is review by peer reviewers, who are not involved in "Health Notions" management. These reviewers have expertise relevant to the articles assigned to them. In this case, applied "BLIND PEER REVIEW", meaning that the author does not know the reviewers to review the article. The end result of peer review is "RECOMMENDATION".

The second is review done by the editor of "Health Notions". The end result of this review is "DECISION". After it is decided that the article is "ACCEPTED", then the article goes to the editing stage, and then will be scheduled for publication.

Researchers can register as a reviewer for stints reviewing articles that are relevant to their area of expertise. Guidelines for review activities are as follows:

1. Sign up for get a username and password
2. LOGIN using username and password
3. Receiving requests to review articles
4. Approved the task of reviewing
5. Check the article (metadata and attached file)
6. Write down the "results of the review". Reviewer can do a review directly on the article file, then upload it
7. Provide a "recommendation"

Note: review is a social duty (non profit).

PRIVACY STATEMENT

The names and email addresses entered in this journal site will be used exclusively for the stated purposes of this journal and will not be made available for any other purpose or to any other party.

ARCHIVING

Health Notions utilizes the Lots of Copies Keep Stuff Safe (LOCKSS) system to create a distributed archiving system among participating libraries and permits those libraries to create permanent archives of the journal for purposes of preservation and restoration.

PROCESSING FEE

This journal charges the following author fees.
Article submission: 0.00 USD (free for charge)
Article publication fee: 120.00 USD (If this article is accepted, you will be asked to pay article publication fee via e-mail).

SUBMISSION PREPARATION CHECKLIST

As part of the submission process, authors are required to check off their submission's compliance with all of the following items, and submissions may be returned to authors that do not adhere to these guidelines.

1. The submission has not been previously published, nor is it before another journal for consideration (or an explanation has been provided in Comments to the Editor).
2. The text typed in article template of this journal.
3. The text adheres to the stylistic and bibliographic requirements outlined in the Author Guidelines.

AUTHOR GUIDELINES

"Health Notions" received the original article in the form of research report, book review, or literature review (must contain the results of previous studies) in the field of health, which has never been published, is equipped with:

1. Research license or endorsement page,
2. If the researcher is more than one person, there must be an agreement signed by the researcher sequence all researchers.

Editor has the authority to accept or reject the incoming articles, and the entire article will not be returned to author. Editor is also authorized to change the article, but will not change the meaning contained therein. In student work article (scientific papers, thesis, dissertation, etc.), student is a primary author.

Terms of the article is as follows:

1. Typed in article template of Health Notions (available at footer of this website)
2. The maximum number is 10 pages and must be submitted by online registration

Article must be written in English and meet the following systematic:

1. The title is written no more than 14 words at the center position.
2. The author's full name without a title written under the title, in bold at the center. Beneath it is written the institutions of author.
3. The word "ABSTRACT" typed in capital letters, at the center, and the contents of the abstract are typed in one paragraph, without indentation. Under the contents of the abstract should be added to the maximum five key words.
4. Introduction is written with indentation 1 cm.
5. Methods is written with indentation 1 cm. The contents adapted to the materials and research methods applied in the study.
6. Results is written with indentation 1 cm. If necessary, this section is equipped with tables and images (photographs, diagrams, illustrations and other forms). The title of the tables are written above the table, the position in the center, while the title of the picture written below the image, with the position in the center.
7. Discussion is with indentation 1 cm. In this section, the results are discussed by referring to the literature and the results of other studies.
8. Conclusions and suggestions written with indentation 1 cm. They are presented in a narrative.
9. References written with a hanging indentation 1 cm, referring to the APA style.

LIST OF ARTICLES

- **Maternal Access to Health Services by Pregnant Mothers in Bacnotan, La Union, Philippines**
Auta Tanko Titus
151-158
- **"KeIPLUS-Gendang Beleg" Model as A Strategy to Improve Knowledge and Attitudes of Couples of Childbearing Age against Long Term Contraception Method**
Awan Dramawan, Moh. Arip, Desty Emilyani
159-162
- **Community Empowerment Model Based on Independence in Administration Alert Village Health Sector**
Suparji Suparji, Heru Santoso Wahito Nugroho, Sunarto Sunarto
163-168
- **Socio-Demographic and Cultural Factors Associated with The Occurrence of Low Birth Weight in Kupang**
Simplicia Maria Anggrahini, Hari Basuki Notobroto, Rika Subarniati Triyoga
169-173
- **Effects of Purple Sweet Potatoes on Oxidative Stress Biomarkers in Rats Subjected to Exhaustive Exercise**
Anindya Maratus` Sholikah, Bambang Wirjatmadi, Merryana Adriani
174-177
- **The Service Compensation of National Health Insurance and The Performance of Health Workers**
Robiatud Daniyah, Ancah Caesarina Novi Marchianti, Sebastiana Viphindrartin
178-182
- **Comparison of MICE and Regression Imputation for Handling Missing Data**
Berliana Devianti Putri, Hari Basuki Notobroto, Arief Wibowo
183-186
- **Brand Image Effect on Selecting Place of Dentures Fabrication at Integrated Specialist Clinic of RSGM FKG UNAIR**
Ria Nila Bawati, Stefanus Supriyanto, Sri Widati
187-191
- **The Knowledge of Balado Chips Producers on The Use of Dyes in Campago Guguk Bulek Village, Bukittinggi**
Fajrina Hidayati
192-195
- **The Role of Health Workers in Handling People with Mental Disorders (ODGJ) Physical Restraint**
Indriany Maya Ariusta, Sri Hernawati, Isa Ma'rufi
196-200
- **Stimulation Model Growth and Social Personal Development of Children Autism in Health Promotion**
Atik Badi'ah, Ravik Karsidi, Ahmad Arman Subijanto, Diffah Hanim
201-207
- **The Mussel Shell Powder as Natural Preservation for Swordfish by Using Smearing Method**
Demes Nurmayanti, Darjati Darjati, Marlik Marlik
208-211
- **The Comparative Study: Self Acceptance, Environmental Development and Depression on Elderly**
Pipit Festy Wiliyanarti, Irma Rofiatin, Dede Nasrullah, Yulianto Yulianto
212-220
- **Analysis of Risk Factors of Quality of Snacks Food Sold in Town Squares of Magetan, Ngawi, Ponorogo and Madiun**
Denok Indraswati, Djoko Windu P. Irawan, Lilis Prihastini, Sigit Gunawan, Bejo Utomo
221-229

- **The Effect of Internal and External Factors to The Number of Visits in Sanitation Clinic of Public Health Center of Poncol Magetan Regency**
Djoko Windu P. Irawan, Denok Indraswati, Trimawan Heru Wijono, Bejo Utomo, Suprijandani Suprijandani
230-235
- **Factors Affecting Menopause**
Rijanto Rijanto, Sherly Jeniawaty
236-239
- **Preparation of Tariffs Based on Unit Cost of Surgical Action in Balung Hospital, Using Activity Based Costing (ABC)**
Sri Wahyuni, Sri Hernawati, Sebastiana Vihindratin
240-243
- **Analysis of Factor Affecting The Willingness of HIV Test on Mariners**
Putri Intianti Utami, Chatarina Umbul Wahyuni, Sri Widati
244-248
- **Maternal Parity and Onset of Lactation on Postpartum Mothers**
Frieska Piesesha, Windhu Purnomo, Roedi Irawan
249-251
- **The Improvement of TNF- α and Inflammation Cell on the Lungs Hypersensitivity Reaction because of Wood Dust Exposure**
Isa Marufi, Anita Dewi Prahastuti, Ragil Ismi Hartanti
252-258
- **Analytical and Phytochemical Exploration of Bioinsecticide Granules Mixed Betel Leaf Extract (Piper betle) and Srikaya Seed Extract (Annona squamosa)**
Dhina Ayu Susanti, Ady Soesetijo, Dwi Wahyuni
259-264
- **A Calculating Actual Stature of Elderly through Arm Span and Knee Height Measurements**
Julia Pertiwi, Martha Irene Kartasurya, Djoko Tri Hadi Lukmono, Henry Setyawan, Martini Martini
265-270
- **Tablets Added Combination Blood Vitamin C Affects The Increase of Hemoglobin Levels in Pregnant Women in The Work Area of Karang Anyar Health Center, Beringin Sub-district, Deli Serdang District**
Yusniar Siregar, Irma Linda, Rismahara Lubis
271-274
- **Profiles of Early Childhood Education Program**
Lisa Pangemanan, Mira Irmawati, Irwanto Irwanto, Ahmad Suryawan
275-278
- **Development of Instruments to Detect Disaster Risk in Children Under Five**
Hery Sumasto, Nurwening Tyas Wisnu, N. Surtinah
279-283
- **The Prediction of Blood Pressure by Waist Circumference, Waist Pelvic Ratio and Body Mass Index**
Nurwening Tyas Wisnu, Angesti Widipinasti Wrahathinggih, Hery Sumasto
284-286
- **Effect of Probiotic Milk Containing L. Casei Shirota on Immunoglobulin-G Levels Among Anemic Adolescent Girls**
Elya Sugianti, Annis Catur Adi, Ikeu Ekayanti, Trias Mahmudiono, Widati Fatmaningrum, Siti Nur Husnul Yusmiati
287-290
- **Benefits Massage for Infants 3 to 5 Months**
N. Surtinah, Agung Suharto
291-296
- **Health Education for Diabetes Patients in Consumption of Oral Hypoglycemic Drugs (OHO)**
Ester Inung Sylvia, Ellen Munikaire
297-300

<http://heanoti.com/index.php/hn>



RESEARCH ARTICLE

URL of this article: <http://heanoti.com/index.php/hn/article/view/hn20221>

Analytical and Phytochemical Exploration of Bioinsecticide Granules Mixed Betel Leaf Extract (*Piper betle*) and Srikaya Seed Extract (*Annona squamosa*)

Dhina Ayu Susanti^{1(CA)}, Ady Soesetijo², Dwi Wahyuni³

^{1(CA)}Graduate School of Public Health Sciences, University of Jember, Indonesia; dhina.apt@gmail.com
(Corresponding Author)

²Faculty of Dentistry, University of Jember, Indonesia

³Department of Biology, Faculty of Teacher Training and Education, University of Jember, Indonesia

ABSTRACT

One alternative in controlling *Aedes aegypti* larvae is with the use of bioinsecticides that are environmentally friendly, safe, and inexpensive. Betel leaf and srikaya seeds contain chemical compounds that can be used as bioinsecticide. The following paper deals with detection of phytochemical in the Granules Mixed Betel Leaf Extract and Srikaya Seed using Thin Layer Chromatography (TLC) and FTIR. The TLC analysis was performed Rf value for 0.91 flavonoid compound; alkaloids 0.49; saponins 0.29 and 0.65; tannin 0.89; and anthraquinone 0.22 and 0.45. The FTIR analysis was performed represented the presence of various functional groups which includes alcohol, alkane, nitrile, and ether.

Keywords: Phytochemical, Bioinsecticide, Granula, TLC, FTIR

INTRODUCTION

Background

Insecticide is one type of pesticide that can kill larvae or insects pests. Insecticide can be used to overcome the increase of Dengue Hemorrhagic Fever (DHF) incidence is to break the spreading chain of *Aedes aegypti* mosquito as a vector of dengue fever. DHF is a viral disease that is dangerous because of its high morbidity and mortality.

Insecticides commonly used by communities are temepos (organophosphates) that can cause death in non-target organisms. Therefore, since 1985 WHO recommends to seek natural insecticides that do not cause many negative impacts on non-target organisms. This natural insecticide is called bioinsecticide. One of bioinsecticides to kill *A. aegypti* mosquito larvae is betel leaf and srikaya seeds. The use of betel leaf as an alternative bioinsecticide because betel leaves easy to grow and easily obtained in almost all regions in Indonesia, the price is relatively cheap, and does not cause environmental damage⁽¹⁾. While the use of Srikaya seed as an alternative bioinsecticide because Srikaya seeds are not widely used and become waste so that other uses are needed to increase the economic value of Srikaya seed. The research has been done to produce granule of toxic compound mixture of betel leaf and srikaya seed extract to *A. aegypti* mosquito larva and proven to kill 95% larvae of *A. aegypti* mosquito with 1 g/10 L water dosage in 105 minutes.

Betel leaf and Srikaya seeds contain chemical compounds that can be used as bioinsecticide⁽²⁾. Various research results show that betel leaf contains phenol and its derivative compounds such as kavikol and eugenol, containing alkaloids, tannins, flavonoids, saponins and essential oils that are as larvicidal⁽³⁾. The extracts of srikaya seeds contain chemical compounds of acetogenin group consisting of annonain, squamosin and asimisin⁽⁴⁾. In addition, srikaya seed extract also contains alkaloid compounds, tannins, saponins, flavonoids and fatty oils composed of metal palmitate, metallic stearate and methyl linoleate⁽⁵⁾.

With so many chemical constituents that have many of these properties, it causes the desire to know more about the chemical compounds in the plant. Therefore it is necessary to do research on chemical compound content in granule of betel leaf extract and srikaya seed extract of srikaya seeds.

Purpose

This research aimed to Analytical and Phytochemical Exploration of Bioinsecticides Granules Mixed Betel Leaf Extract (*Piper betle*) and Srikaya Seed (*Annona squamosa*) used thin layer chromatography (TLC) and Fourir Transform Infrared Spektroskopi (FTIR) methods.

METHODS

This research was true-experimental research (Posttest Only Without Control Group Design) conducted in laboratory of Biology and Chemistry, faculty of Pharmacy, Jember University. The granule sample used "Bio Ae" product. Bio Ae was a granule being contained a mixture of betel leaf extract and srikaya seeds produced by the University of Jember in collaboration with the District Health Office of Jember as the user agency and PT Agaricus Sidomakmur Sentosa as the industrial side who would do the production. Bio Ae products had been proposed to obtain HKI and had reached the publication stage with the publication number 2015/01902.

The materials were glassware, butanol, acetic acid, water, ethyl acetat, methanol, n-hexane, chloroform, Plat silica Gel UV-254. Instrumen used is Bruker's alpha FTIR system with OPUS version 7.0.122

Detection Using Thin Layer Cromatography (TLC)

1. TLC Study of Flavonoid

The solvent system of butanol: acetic acid: water (4:1:5) was used as eluent. The favonoids were detected under UV-254 nm light. The Rf values were calculated and noted.

2. TLC Study of Alkaloid

The solvent system of ethyl acetat: methanol: water (9:2:2) was used as eluent. The favonoids were detected under UV-254 nm light. The Rf values were calculated and noted.

3. TLC Study of Sapogeni

The solvent system of n-hexane: ethyl acetat (4:1) was used as eluent. The favonoids were detected under UV-254 nm light. The Rf values were calculated and noted.

4. TLC Study of Polifenol

The solvent system of chloroform: ethyl acetat (1:9) was used as eluent. The favonoids were detected under UV-254 nm light. The Rf values were calculated and noted.

5. TLC Study of Antrakuinon

The solvent system of toluena: ethyl acetat: acetic acid (75:24:1) was used as eluent. The favonoids were detected under UV-254 nm light. The Rf values were calculated and noted.

Detection Using FTIR

Samples were inserted into sample containers with ATR accessories placed in the FTIR spectrophotometer. The detector used is DTGS (deuterated triglycine sulphate). Measurements are made in the range of 1000-4000 cm- wave numbers. Software OPUS 7.2.139.1.24 (Bruker Optik GmbH, Ettlingen, Germany) is used to display the FTIR spectrum. FTIR spectrum data is stored in xls file.

RESULTS

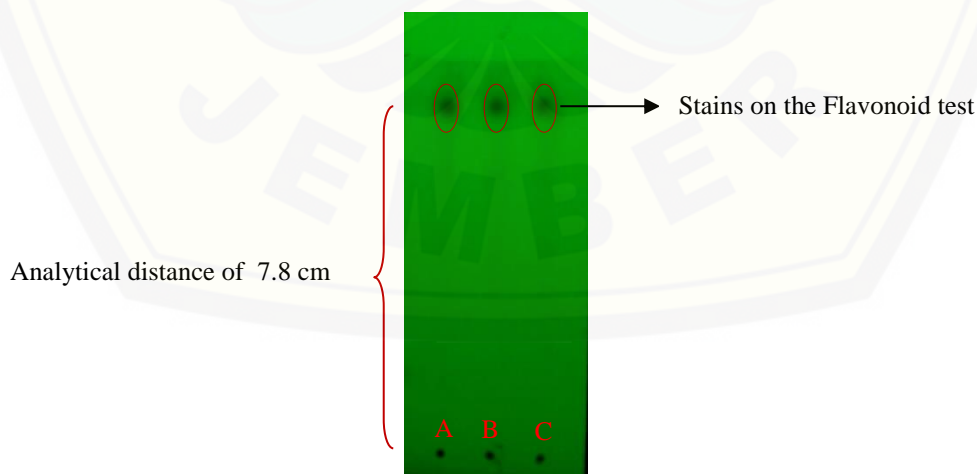


Figure 1. Stain Formed and Analytical Distance on Flavonoid Test. Sampling Place of First Sample Replication (A), Second Replicating Sampling Place (B), Third Replicating Sampling Place (C).

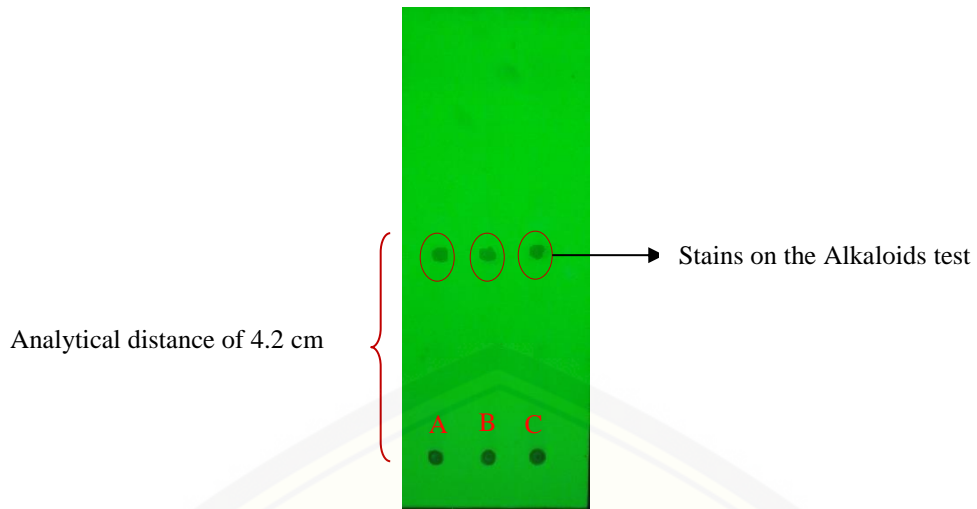


Figure 2. Stain Formed and Analytical Distance on Alkaloid Test. Sampling Place of First Sample Replication (A), Second Replicating Sampling Place (B), Third Replicating Sampling Place (C).

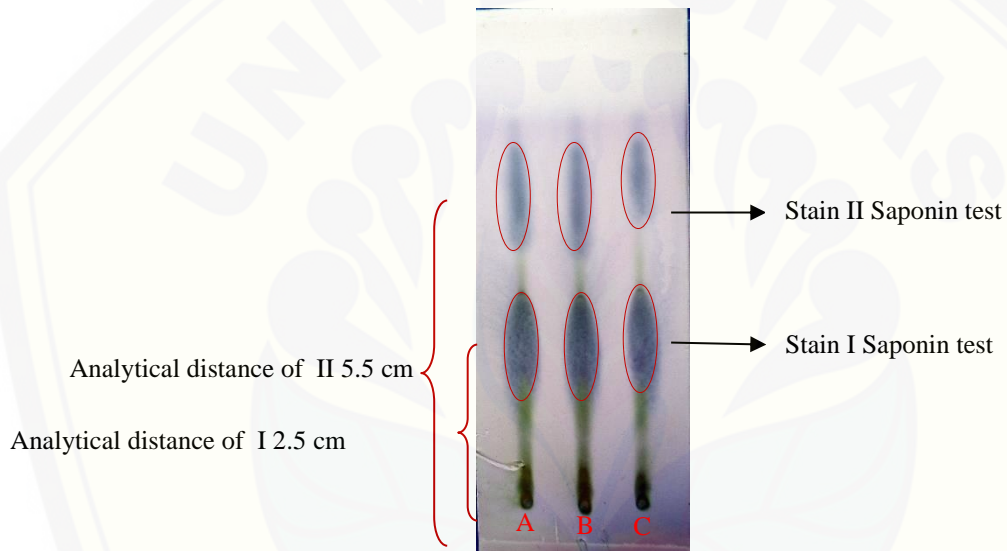


Figure 3. Stain Formed and Analytical Distance on Saponin Test. Sampling Place of First Sample Replication (A), Second Replicating Sampling Place (B), Third Replicating Sampling Place (C).

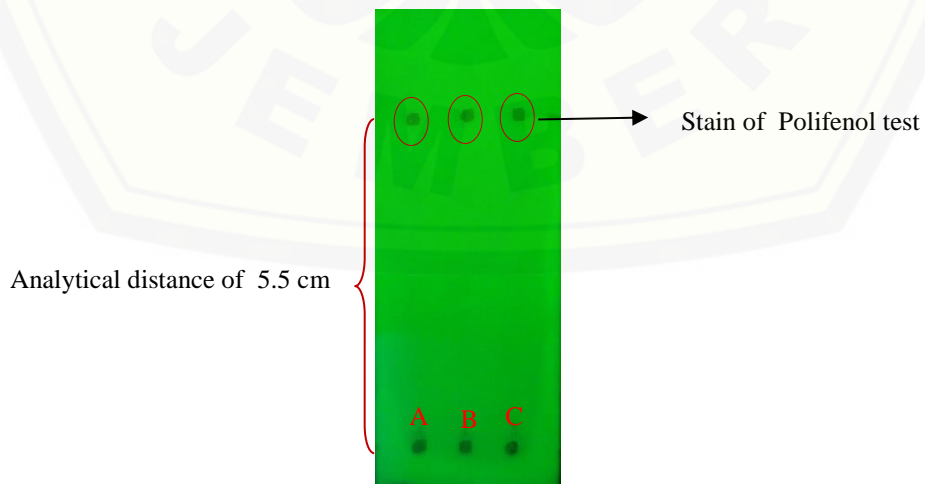


Figure 4. Stain Formed and Analytical Distance on Tanin Test. Sampling Place of First Sample Replication (A), Second Replicating Sampling Place (B), Third Replicating Sampling Place (C).

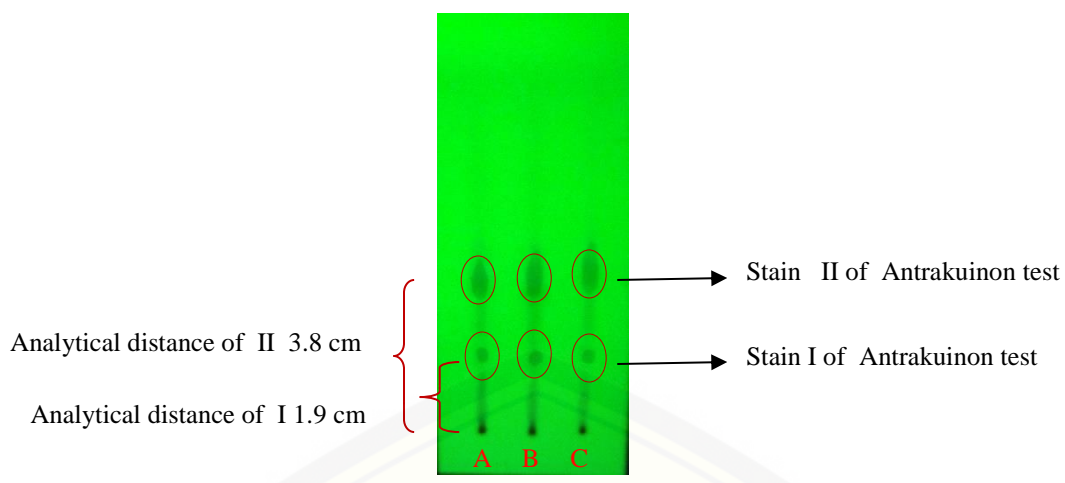


Figure 5. Stain Formed and Analytical Distance on Antrakuinon Test. Sampling Place of First Sample Replication (A), Second Replicating Sampling Place (B), Third Replicating Sampling Place (C).

Table 1. TLC Profile of granule mixture of betel leaf extract and srikaya seed extract

No	Compound	Eluen's Distance (cm)	Analit's distance (cm)	Rf Value
1.	Flavonoid	8.5	7.8	0.91
2.	Alkaloid	8.5	4.2	0.49
3.	Saponin	8.5	2.5 and 5.5	0.29 and 0.65
4.	Polifenol	8.5	7.6	0.89
5.	Antrakinon	8.5	1.9 and 3.8	0.22 and 0.45

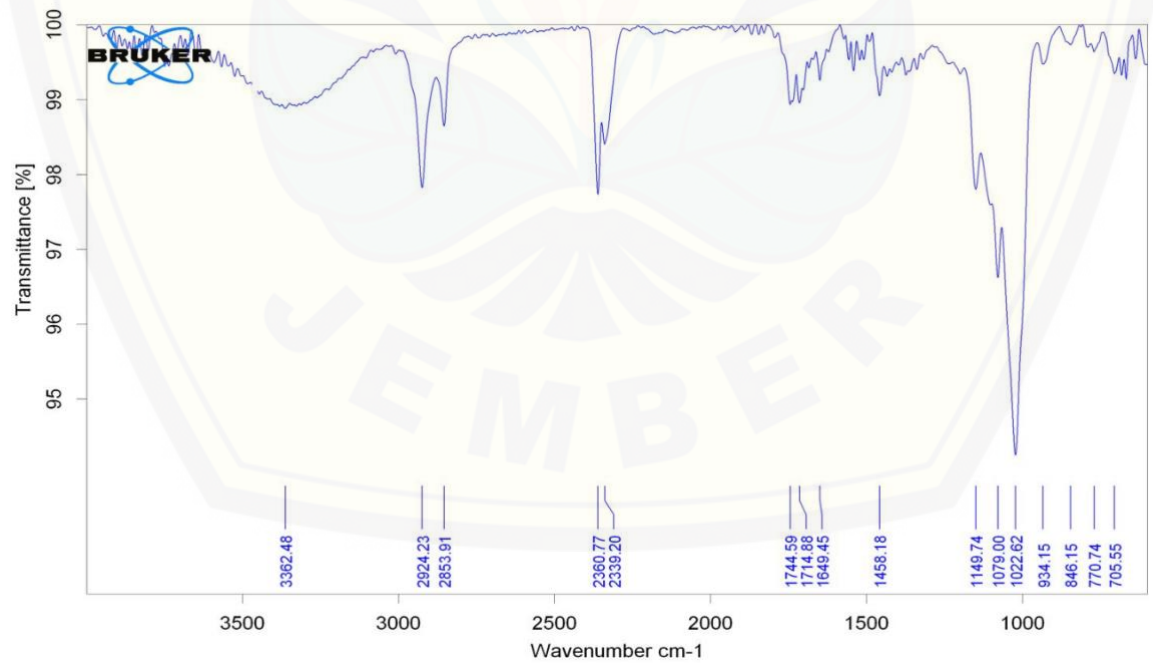


Figure 6. FTIR Profile Granules Mixed Green betel leaf Extract and Srikaya Seed Extract. Interpretation of the results based on the highest absorption peaks so that on the graph above obtained 4 peaks with the highest uptake. Apex Absorption At Wavelength 3362.48 cm⁻¹ (A), Wet-Absorption Absorption At Wavelength 2924.23 cm⁻¹ (B), Wave Absorption At Wavelength 2360.77 cm⁻¹ (C), 1022.62 cm⁻¹ (D).

Table 2. Wavelength Numbers and Functional Groups on Granules

No.	Wavelength (cm ⁻¹)	Bond	Functional Group
1.	3362.48	O-H stretch, H-Bonded	Fenol, alcohol
2.	2924.23	C-H Strecth	Alkana
3.	2360.77	-C≡N	Nitril
4.	1022.62	C-O Stretch	Eter

DISCUSSION

Detection Using Thin Layer Cromatography (TLC)

Thin Layer Chromatography (TLC) is a technique of separating the solute by a dynamic differential migration process in a system consisting of two or more phases in which one phase moves continuously in a particular direction. Data obtained from TLC is the value of Retention factor (Rf) which is useful for the identification of compounds. The Rf value can be defined as the distance traveled by the compound from the point of origin divided by the distance traveled by the solvent from the origin. The TLC analysis was performed Rf value for 0.91 flavonoid compound; alkaloids 0.49; saponins 0.29 and 0.65; tannin 0.89; and anthraquinone 0.22 and 0.45.

Detection Using FTIR

Based on the results of IR spectrophotometer analysis, the absorption bands that appear at certain wave numbers are obtained. Weak uptake at wavelength 3362.48 cm⁻¹ OH group of alcohols reinforced with CO group at wavelength 1022.62 cm⁻¹. The absorption at the wavelength of 2924.23 cm⁻¹ indicates the presence of C-H groups from alkanes while the absorption at wavelength 2360.77 cm⁻¹ indicates the presence of a -C≡N group of nitriles. This indicates that the granule mixture of green betel leaf extract and srikaya seed contains saponin. The results of this study should be continued by determining how much the number of C atoms and the H atoms contained using the core magnetic resonance method (NMR) so as to determine the structural formula of the compound. In addition, information about the molecular weight of the compound should also be known using the Liquid Chromatoghrapy with Mass Spectromethry (LC-MS) method. A chemical compound in a plant has a structure and a certain molecular weight that can be used as the basis for its identification.

The functional group is a special group of atoms in the molecule that play a role in giving the characteristic chemical reaction to the molecule. The functional group is a reactive member of a molecule so that the functional group determines the properties of many compounds. One of the properties of the compound that acts as a larvacide is its polarity. This biolarvasida naturally will be used in water so it needs polar biolarvascida active compound. In addition to the active compound distribution process, the penetration of the biological membrane is primarily influenced by the lipophilic properties of molecules such as their solubility in fat / water. Polar compounds are compounds formed from atoms that have large electronegativity differences. In polar compounds, the shared electrons are attracted stronger to one of the atoms. As a result one of the atoms will become more negatively charged and the other atom is positively charged.

The OH alcoholic group is polar. In an alcohol, the longer the hydrocarbon chain the lower the solubility. Even if this hydrophobic nature is long enough it defeats the hydrophilic nature of the hydroxyl group. The number of hydroxyl groups can increase solubility in water. Alkanes are saturated aliphatic hydrocarbons, ie hydrocarbons with an open chain and all bonds between carbon atoms are single bonds. All alkanes are difficult to dissolve in water. This is because the alkane molecule is nonpolar, whereas water is a polar solvent. Alkanes also have a chemical nature to react with other substances because it is a saturated hydrocarbon. The ether compounds do not have hydrogen bonds because they have no acidic H atoms attached to their O atoms. Ether has only one type of style between molecules, namely London style. With the increase in the number of C atoms in the carbon chain, the strength of the London style has increased. The C-O group in the ether is polar. However, the solubility of ether in a polar solvent such as water is very small because the ether forms a very weak hydrogen bond with water. This solubility also decreases with the length of the carbon chain because the ether is increasingly non polar. Nitriles are organic compounds that have a functional group -C≡N. Nitriles are a group of toxic compounds because they contain CN groups in their structure. The linear N-C-C geometry in nitriles represents sp hybridization of triple carbon. Nitriles are very polar compounds. Atom N is a very electronegative atom that easily pulls the electrons in a three-dimensional bond toward it. Because it has a pole, the nitrile compound has a Van der Waals force in the form of a very strong permanent dipole. Although nitrile compounds do not form hydrogen bonds with their fellow molecules, but when dissolved into water, the hydrogen bonds will form with water molecules. In addition to forming hydrogen bonds with water molecules, nitrile compounds can also form a permanent dipole - dipole dispersion force with water because these two compounds are polar. The formation of forces between water molecules with this nitrile will release energy. This energy can be used to separate forces between molecules that occur between fellow compounds of nitrile and water, so that they can be mixed perfectly.

As the carbon chain lengthens on the nitrile compound, it reduces the formation of hydrogen bonds with water molecules. this causes the solubility of the compound to decrease.

By studying the functional groups of a compound also serves as a first step in determining the presence of haptoforic and pharmacoforic groups that determine the biological activity of a compound. The Haptoforik group is a group that plays a role in the formation of complex bonds of chemical compounds and receptors whereas the pharmacoforic groups are the groups responsible for the biological response. The biological response results from the interaction of drug molecules with functional groups of receptor molecules. The types of bonds between active molecules and receptors include covalent bonds, hydrogen bonds, ion-dipoles, and van der Waals bonds. Covalent bonds are the strongest bond between receptor and drug compound. Modification of functional groups of a compound can improve the strength of the receptor bond using bioisosterism. Bioisosterism is the replacement of functional groups in an active specific molecule with another group that produces new compounds with better biological activity.

CONCLUSION

The result of analysis using layers chromatography showed that the mix granule of betel leaf and srikaya seed contains flavonoid compound, alkaloid, saponin, tannin, and antrakinon. The result of analysis using FTIR spectrophotometry showed that the granules of srikaya seed mixture and betel leaf contain alcohol group, alkane, nitrile, and eter.

Further research is needed from this granule to obtain secondary metabolite compounds because it is possible there are many other compounds that have not been identified in this study. Analysis by instrumentation method LCMS and C-NMR is needed to obtain more complete and accurate information in identifying molecular structure of isolate compound.

REFERENCES

1. Aini Q. Effects of Betel Leaf Extract (*Piper betle L.*) on Changes of Differential Counting of Leukocyte of Blood Edge of Male Wistar Rats Exposed by *Candida albicans* Intracutaneously (Efek Pemberin Ekstrak Daun Sirih (*Piper betle L.*) terhadap Perubahan Hitung Jenis Leukosit Darah Tepi Tikus Wistar Jantan yang Dipapar *Candida albicans* secara Intrakutan). Undergraduate Thesis. Jember: Fakultas Kedokteran Gigi, Universitas Jember; 2012.
2. Wahyuni D. Laboratory Test of Toxic Compounds from Betel Leaf Extract. *Spirulina*. 2013;1(18).
3. Aulung A, Christiani, Ciptaningsih. Larvacide Power of Betel Leaf Extract (*Piper betle L.*) on Mortality of larvae *Aedes aegypti L* (Daya Larvasida Ekstrak Daun Sirih (*Piper betle L.*) terhadap Mortalitas Larva *Aedes aegypti L*. *Majalah Kedokteran FK UKI*. 2010;27(1):7-14.
4. Hermianto, Wiharsi T, Sumarsono. Potential of Srikaya Seed Extract (*Annona squamosa*) to Control Caterpillar Cabbage *Crociodolomia pavonana*. *Agrosains*. 2004;6(1):31-35.
5. Taslimah. 2014. Efficacy Test of Srikaya Seed Extract (*Annona squamosal L*) as Bioinsecticide in Integrated Vector Management Efforts on *Aedes aegypti*. Jakarta: Universitas Islam Negeri Syarif Hidayatullah; 2004.